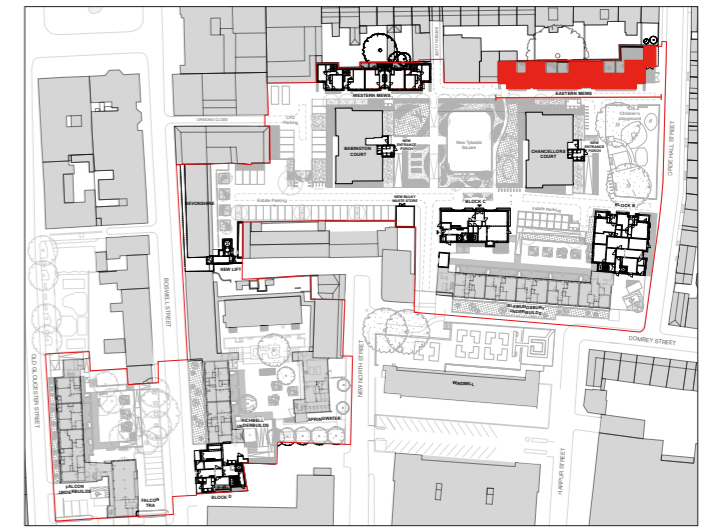


7.4 PROPOSED EASTERN MEWS

EASTERN MEWS ELEVATIONS

Creating a new street, the south elevation faces onto the main Estate and Tybalds Square, with light buff brickwork and a collection of single and double windows, alternated with recessed blank panels. The stair pop-ups to the roof terraces emerge from the high parapet wall and blend in with their surroundings.



KEY

CHANCELLORS COURT IN THE FOREGROUND



SOUTH ELEVATION

7.4 PROPOSED EASTERN MEWS

CHANCELLORS COURT

EASTERN MEWS ELEVATIONS



EAST ELEVATION

7.4 PROPOSED EASTERN MEWS

EASTERN MEWS ELEVATIONS

The Eastern mews sit in front of an existing wall which will be retained, that face onto neighbouring houses and private gardens. Due to this, the north elevation presents a relatively blank facade, made interesting through the extrusions and recesses of the walls.

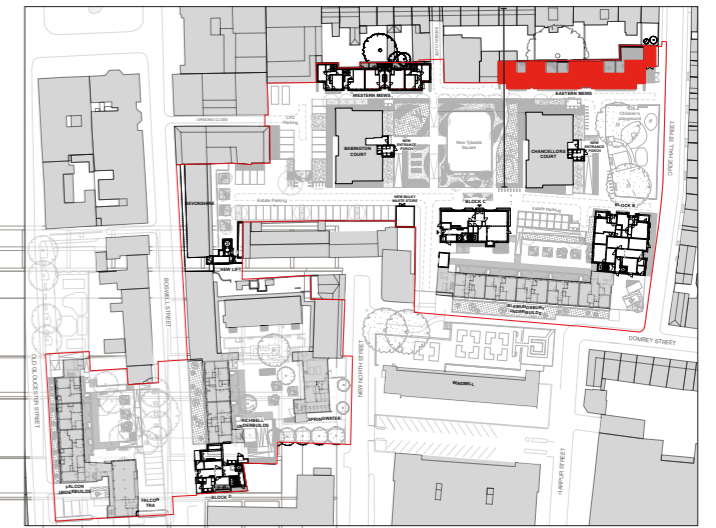


NORTH ELEVATION

7.4 PROPOSED EASTERN MEWS

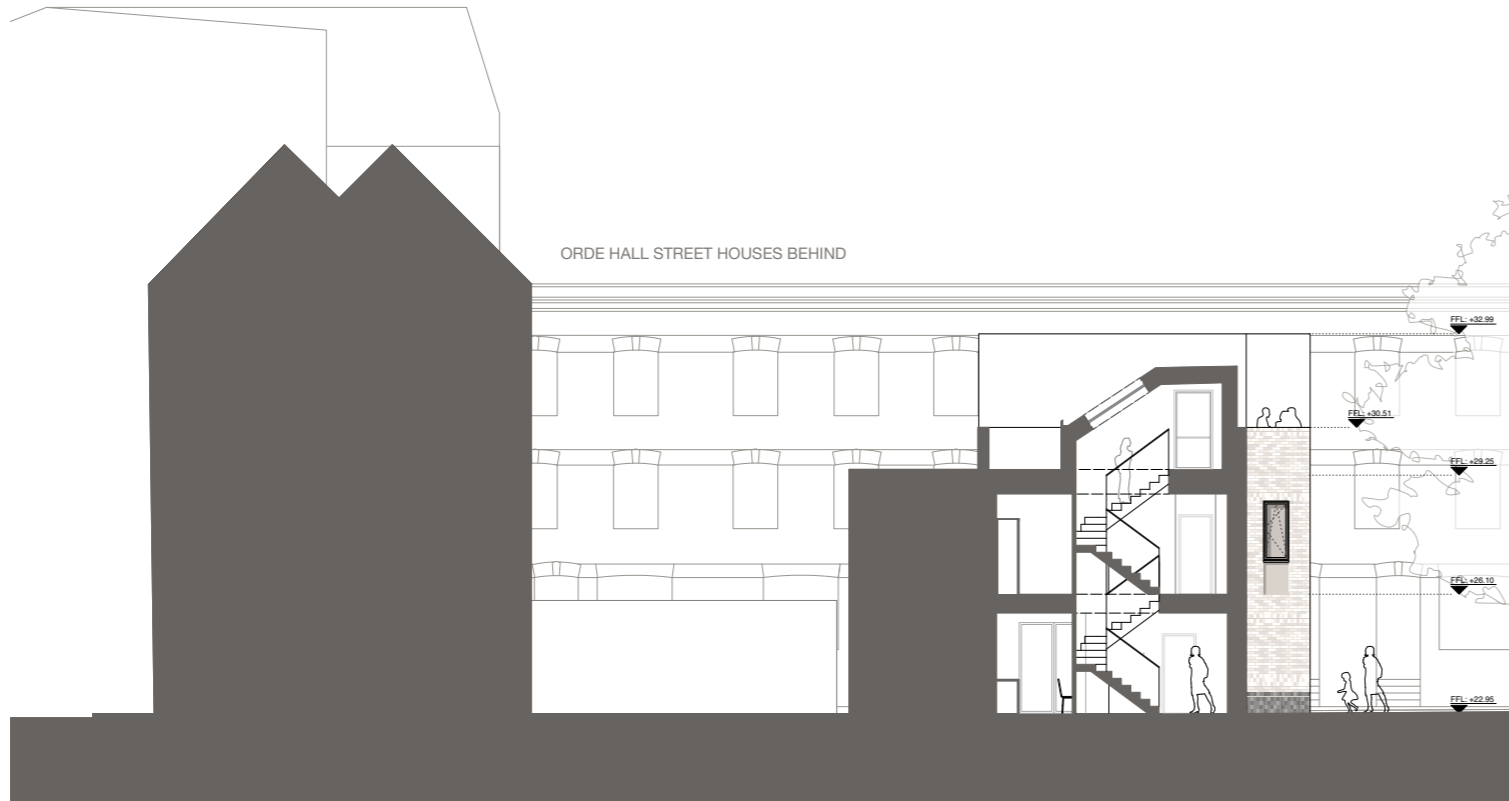
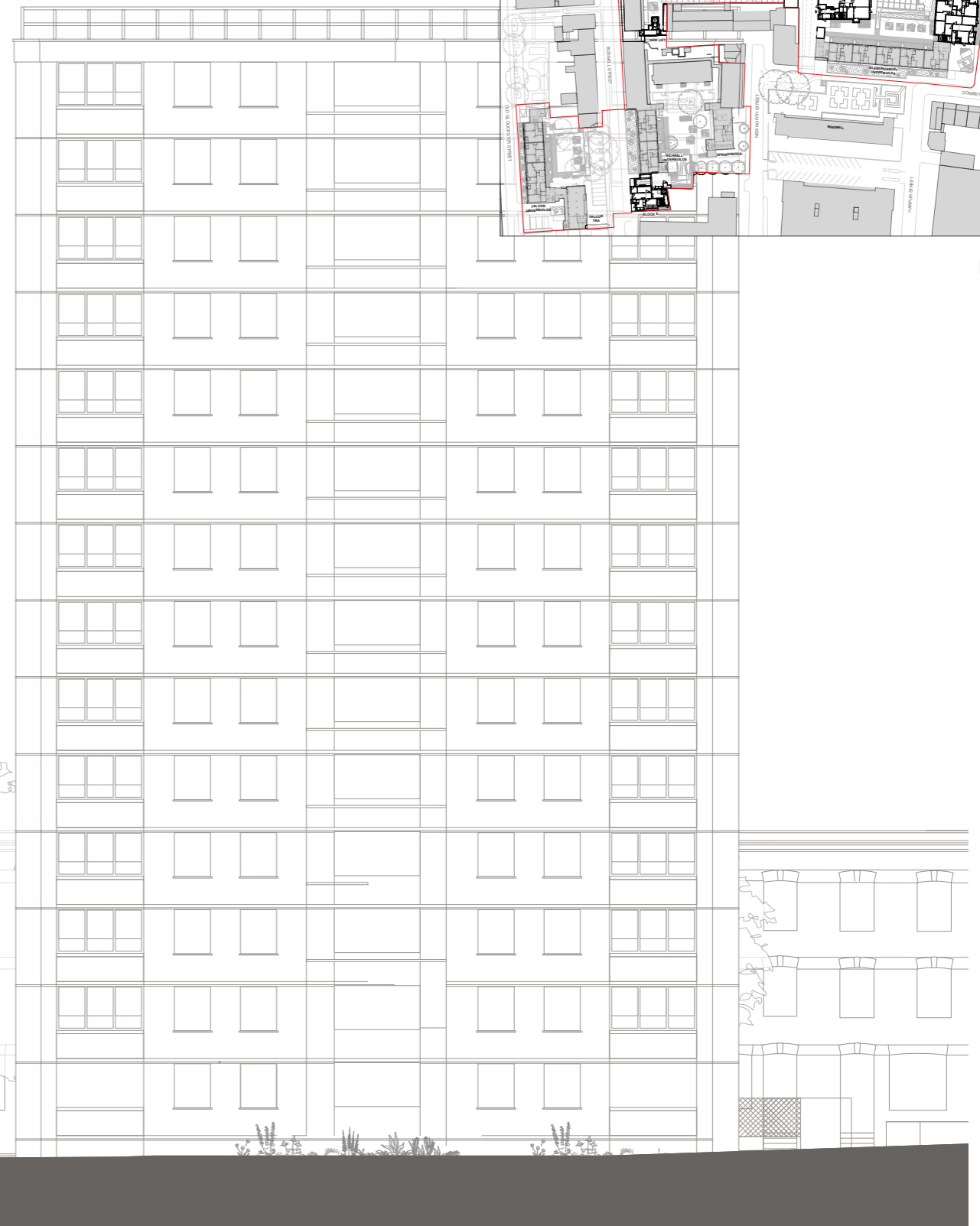
EASTERN MEWS ELEVATIONS

CHANCELLORS COURT



KEY

ORDE HALL STREET HOUSES BEHIND



WEST ELEVATION