

7.5 PROPOSED WESTERN MEWS

WESTERN MEWS PLANS

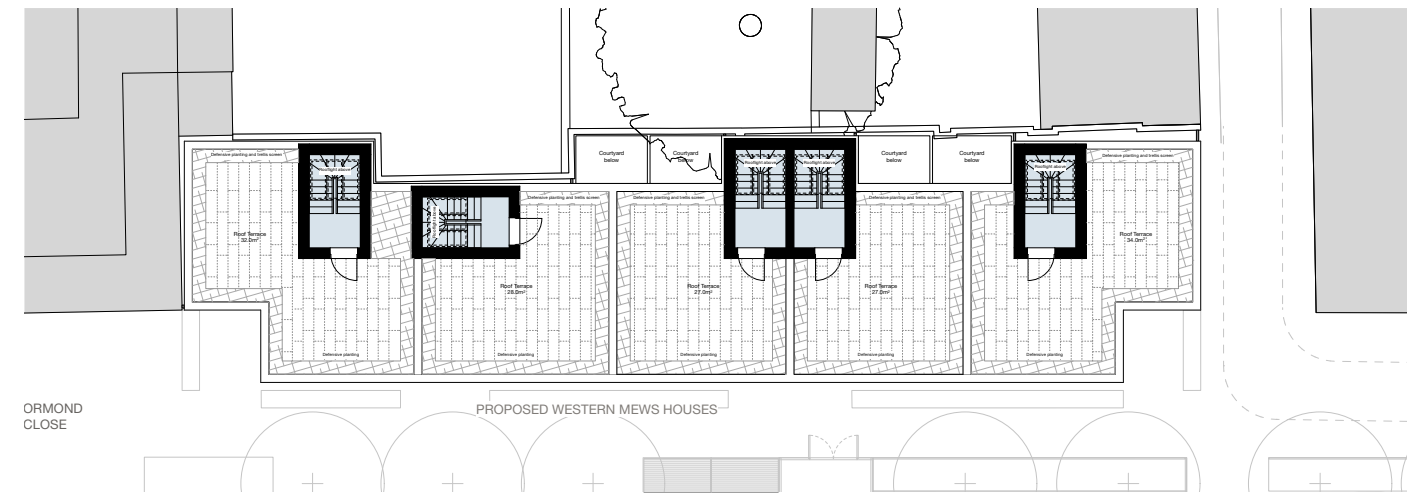
Similarly to the Eastern Mews, the Western Mews comprises 5 terraced two-storey houses for private market sale. All have roof terraces and four also have private courtyards.

In summary these consist of:

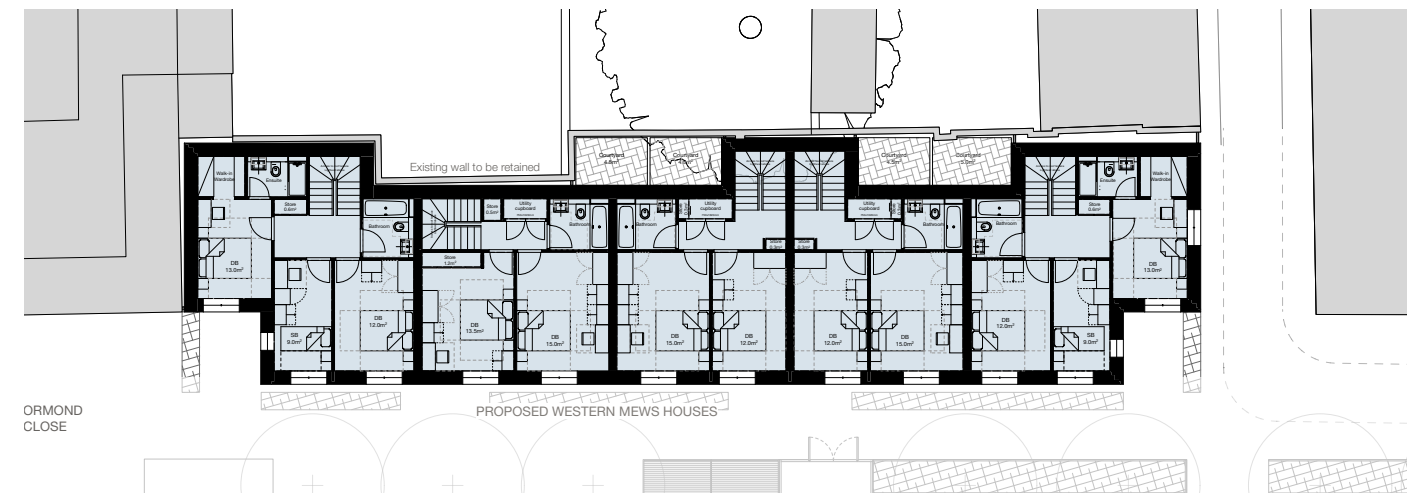
-2x 3B5P houses

-3x 2B4P houses

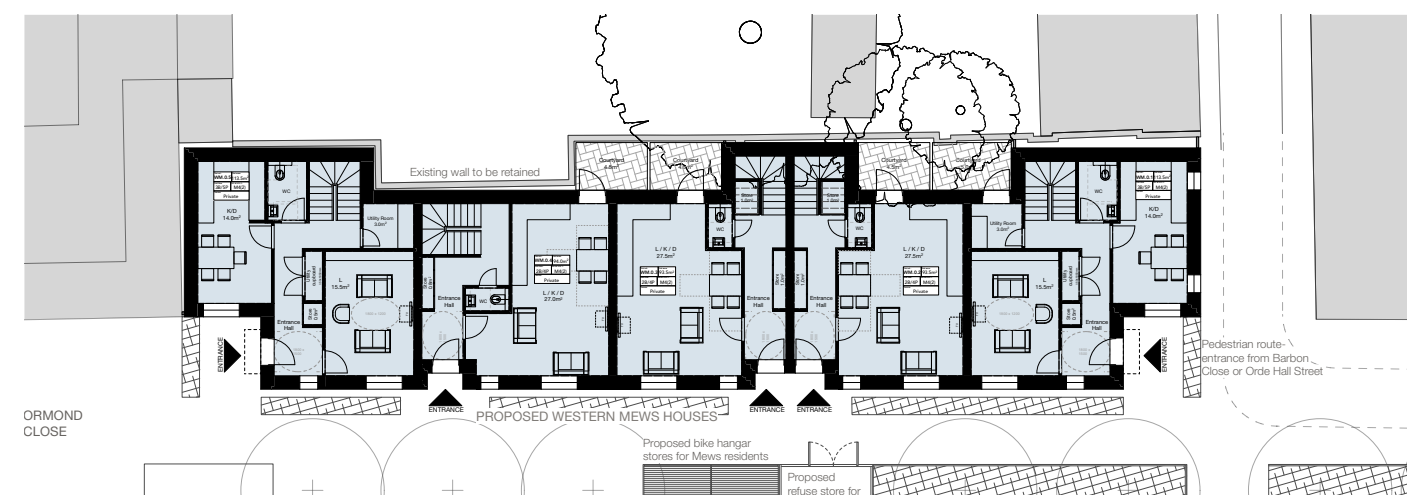
Access to these will be from either Orde Hall Street or Barbon Close.



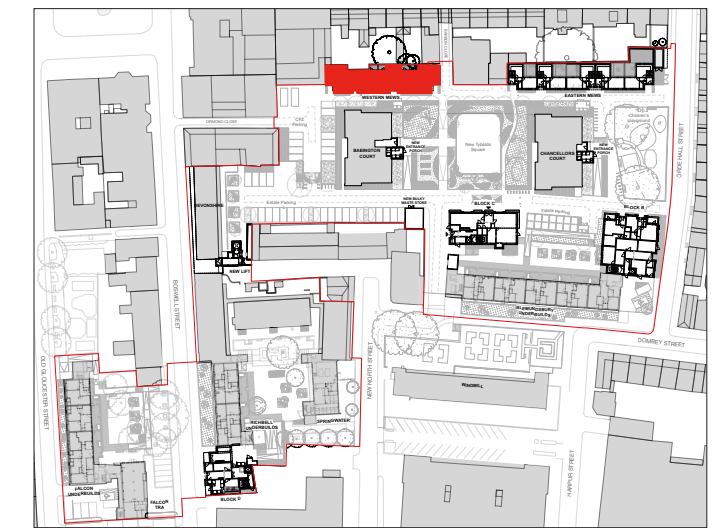
SECOND FLOOR PLAN



FIRST FLOOR PLAN



GROUND FLOOR PLAN



KEY



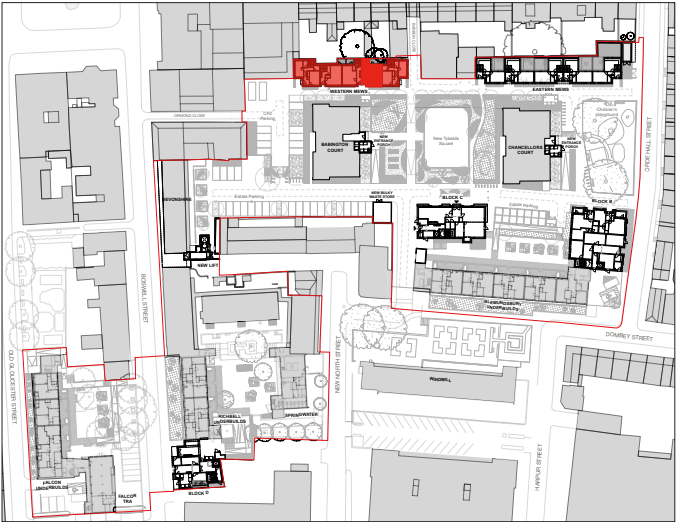
Birds eye view from site model



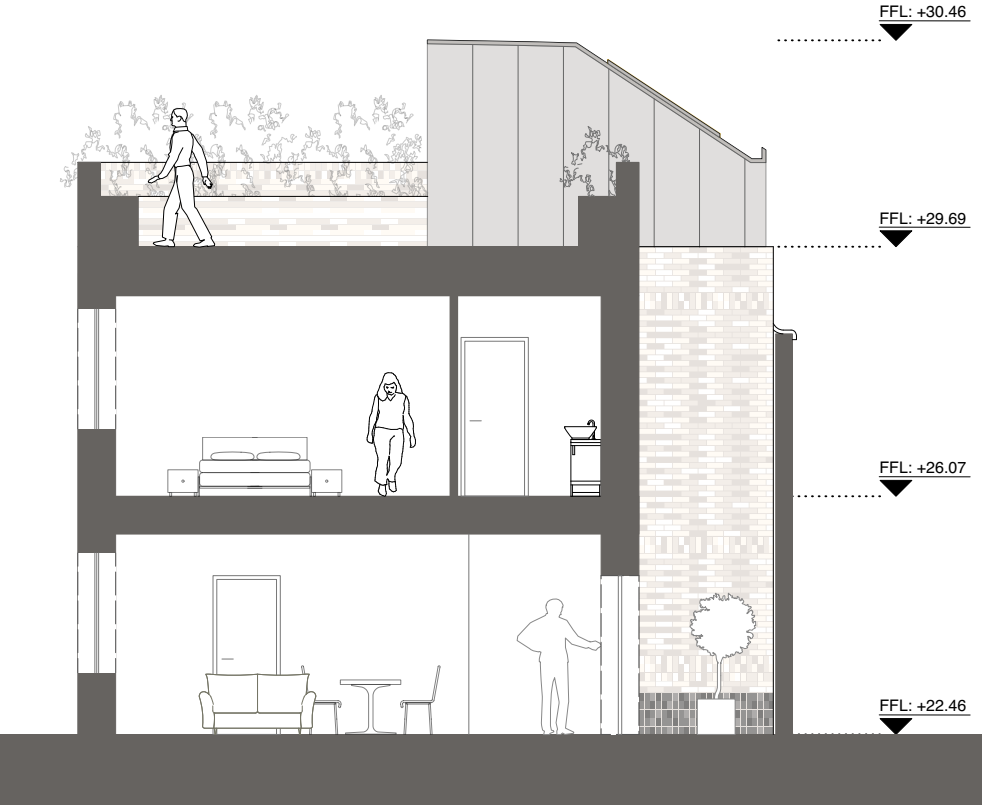
Tybalds Square view from 3D model

7.5 PROPOSED WESTERN MEWS

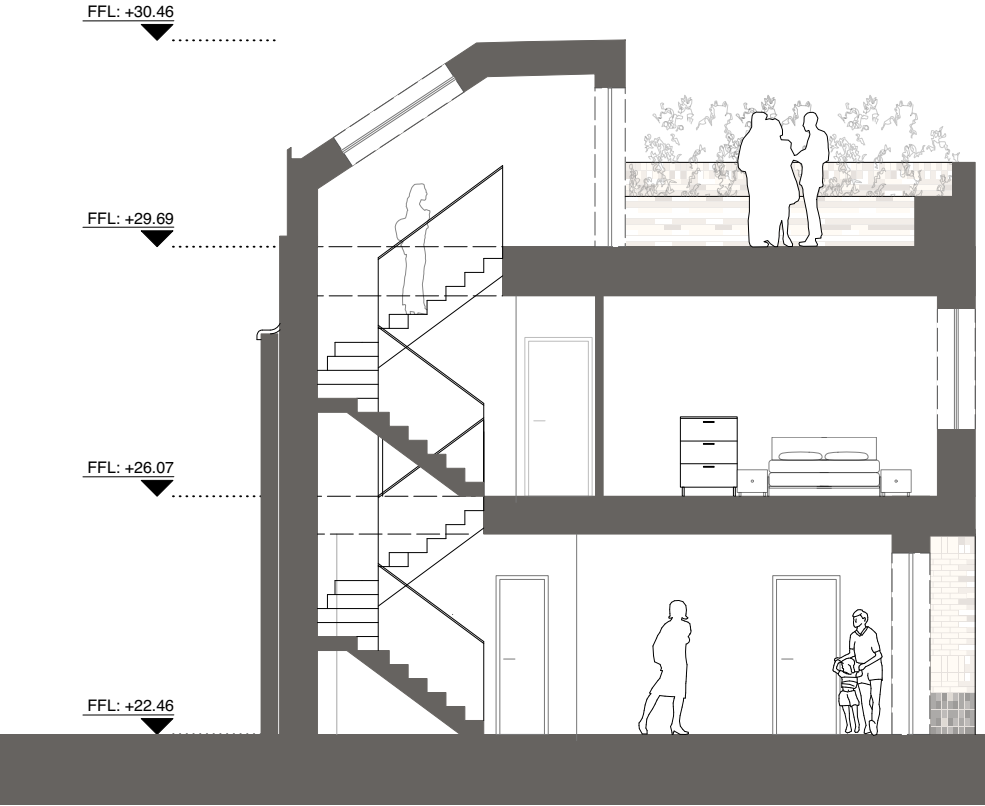
WESTERN MEWS TYPICAL SECTIONS



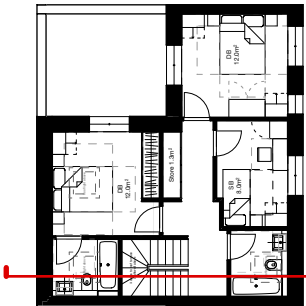
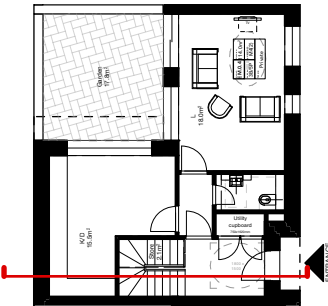
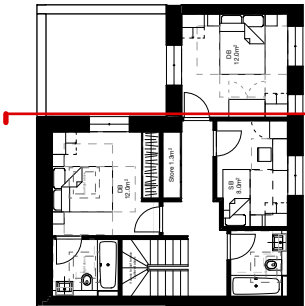
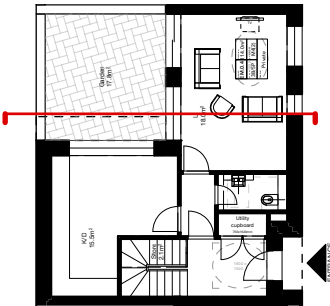
KEY



TYPICAL MEWS HOUSE SECTION A-A



TYPICAL MEWS HOUSE SECTION B-B



7.5 PROPOSED WESTERN MEWS

WESTERN MEWS ELEVATIONS

Forming a twin set with the Eastern mews the Western mews follows all the same design and architectural principles.
The proportions of the windows to the brick walls have been carefully thought out carefully minding Babington court's kitchen windows.



SOUTH ELEVATION

7.5 PROPOSED WESTERN MEWS

WESTERN MEWS ELEVATIONS

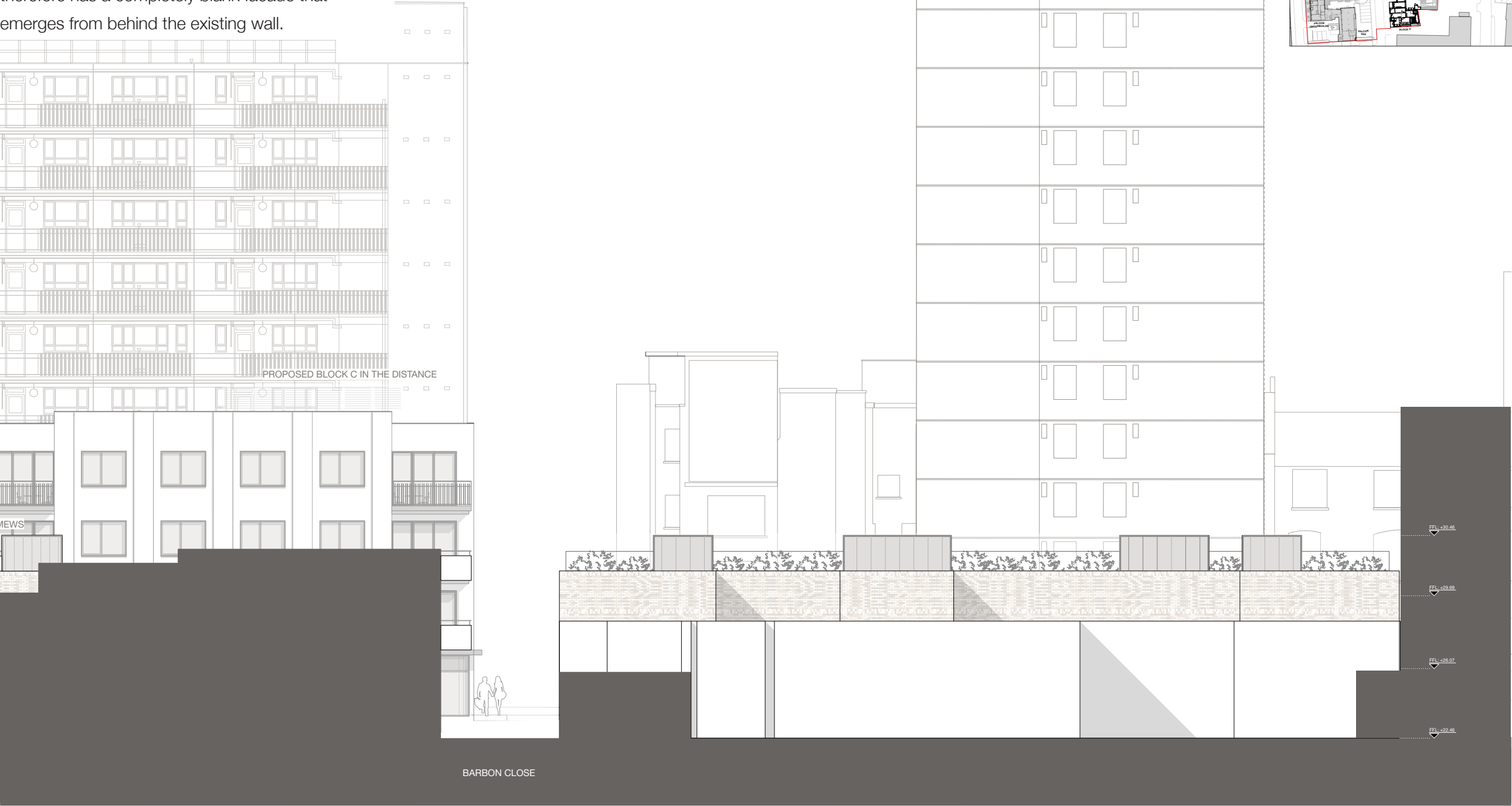


EAST ELEVATION

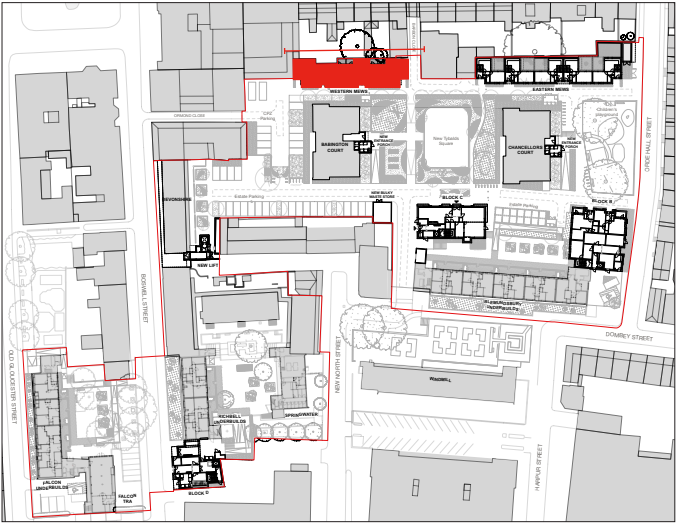
7.5 PROPOSED WESTERN MEWS

WESTERN MEWS ELEVATIONS

The Western Mews sit in front of a listed 2-storey high brick wall that needs to be retained, and therefore has a completely blank facade that emerges from behind the existing wall.



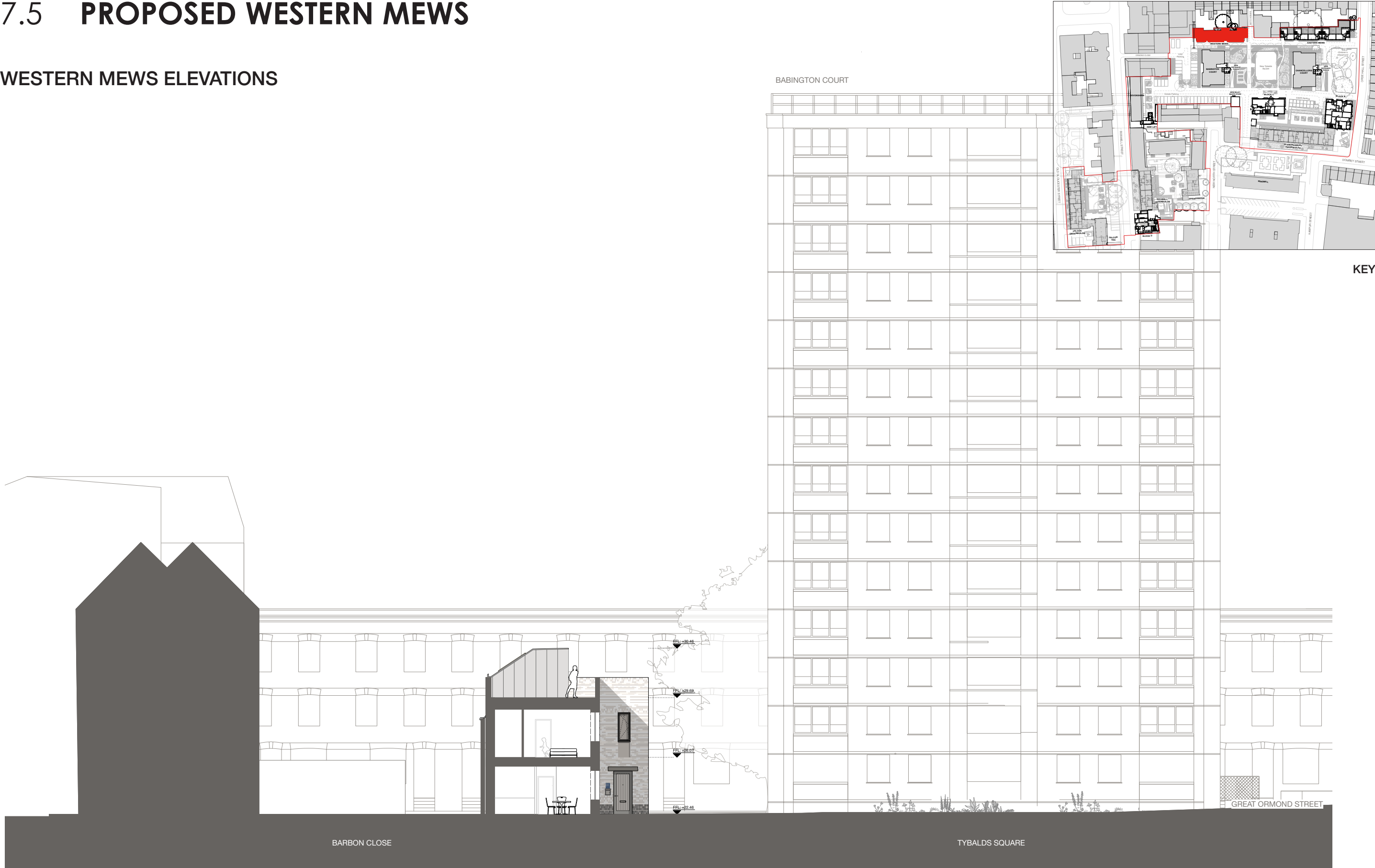
NORTH ELEVATION



KEY

7.5 PROPOSED WESTERN MEWS

WESTERN MEWS ELEVATIONS



WEST ELEVATION