

# 7.8 PROPOSED DEVONSHIRE LIFT

## DEVONSHIRE LIFT PLAN

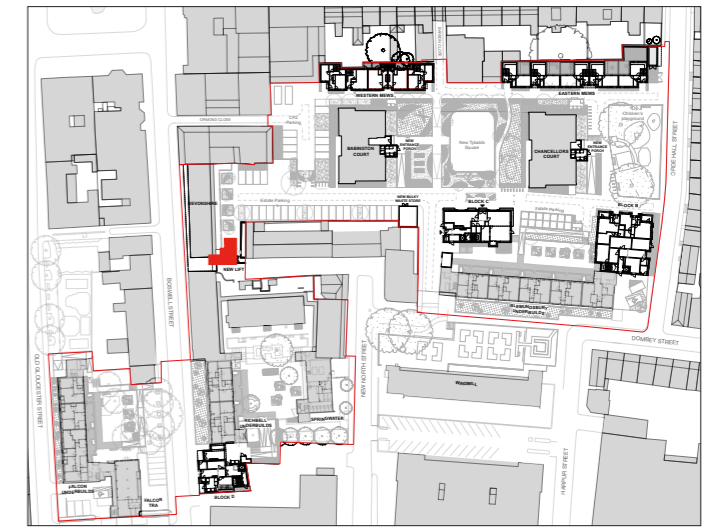
The new Devonshire lift is designed to be an extension of the existing stair core, improving accessibility to Devonshire Court residents.

It is designed so that minimum disruption is caused to residents during construction and the existing stair will stay in use throughout.

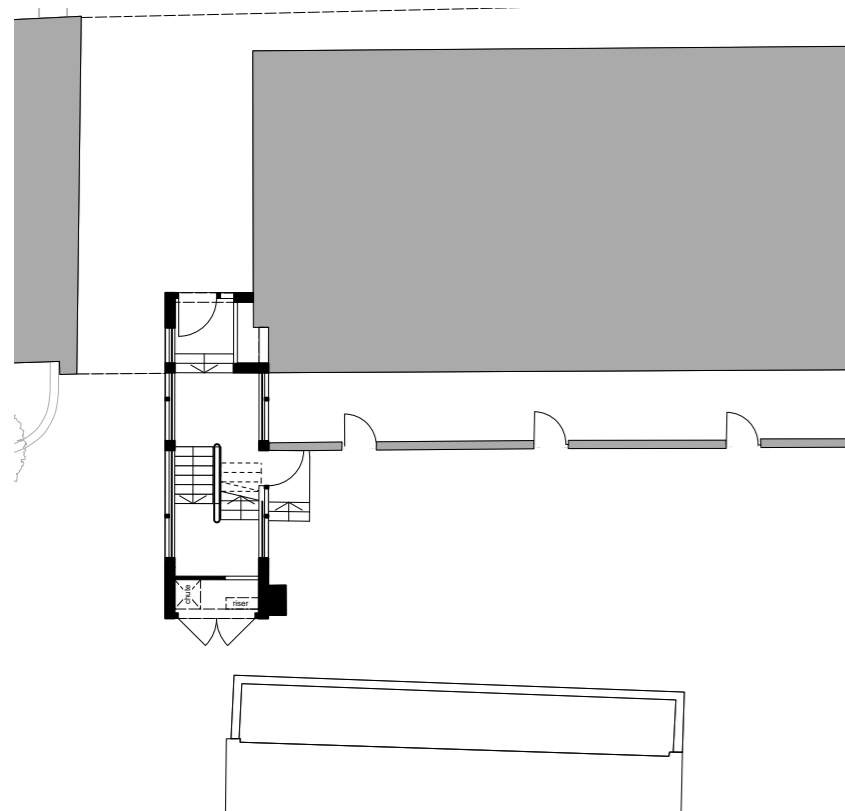
The lift also provides a second entrance from the east through a secure gate and front door, thereby cutting off an existing public route which to date has been location of occasional anti-social behaviour.



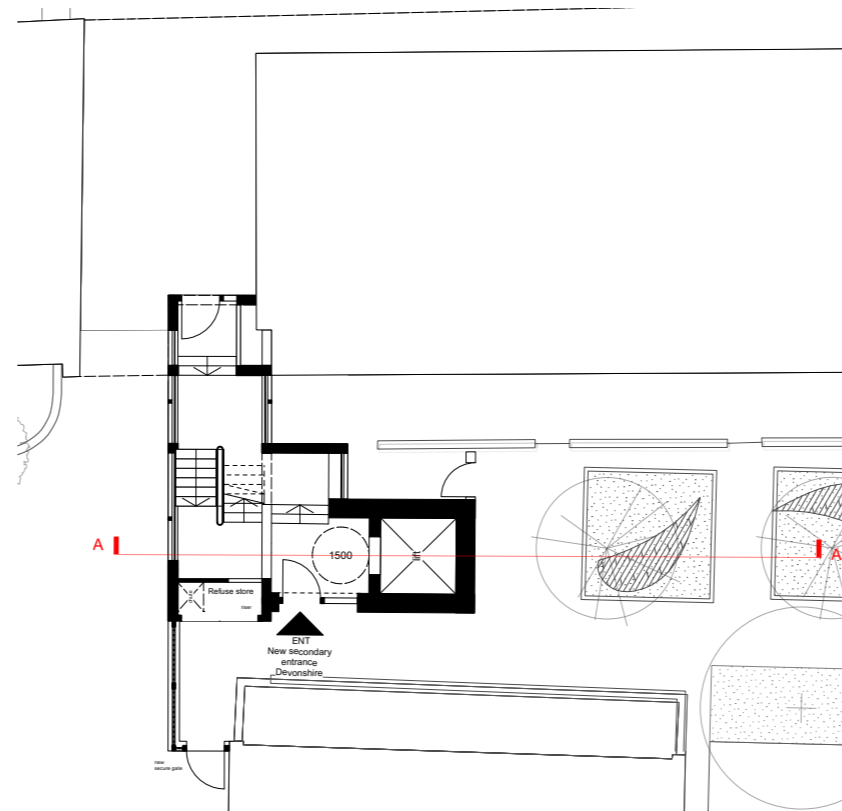
Existing Devonshire Court stair core and position of new lift (in red)



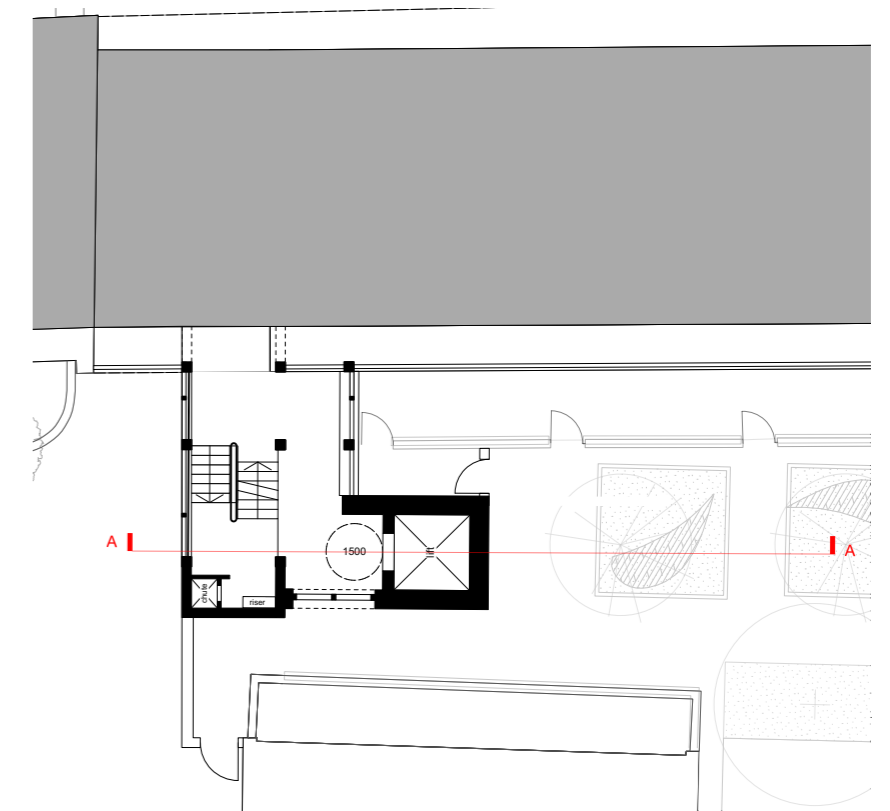
KEY



EXISTING GROUND FLOOR PLAN



PROPOSED GROUND FLOOR PLAN

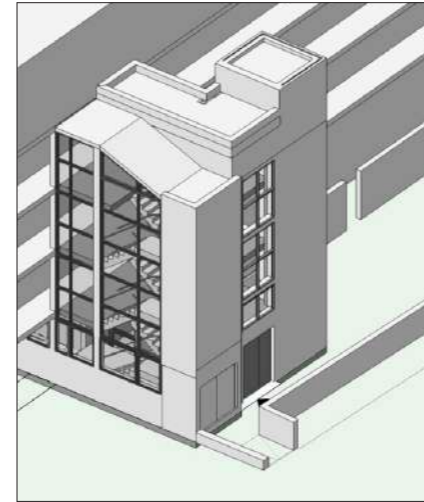
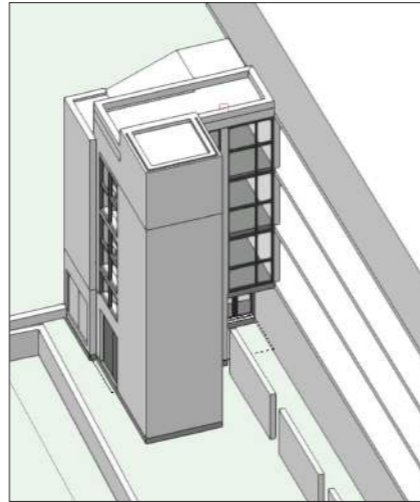


PROPOSED TYPICAL FLOOR PLAN

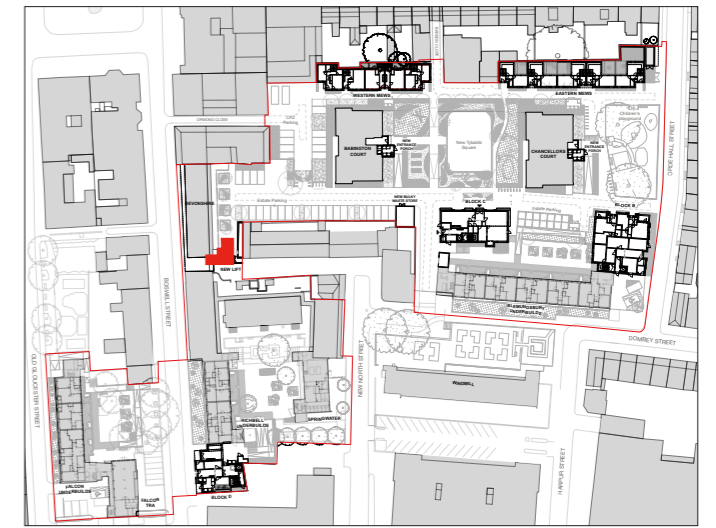
# 7.8 PROPOSED DEVONSHIRE LIFT

## DEVONSHIRE LIFT ELEVATIONS

As the new Devonshire court lift is a direct extrusion of the existing core, the materials proposed will resemble the colour and appearance of those used on the existing building.



Devonshire lift view from 3D model



KEY



EAST ELEVATION



SOUTH ELEVATION



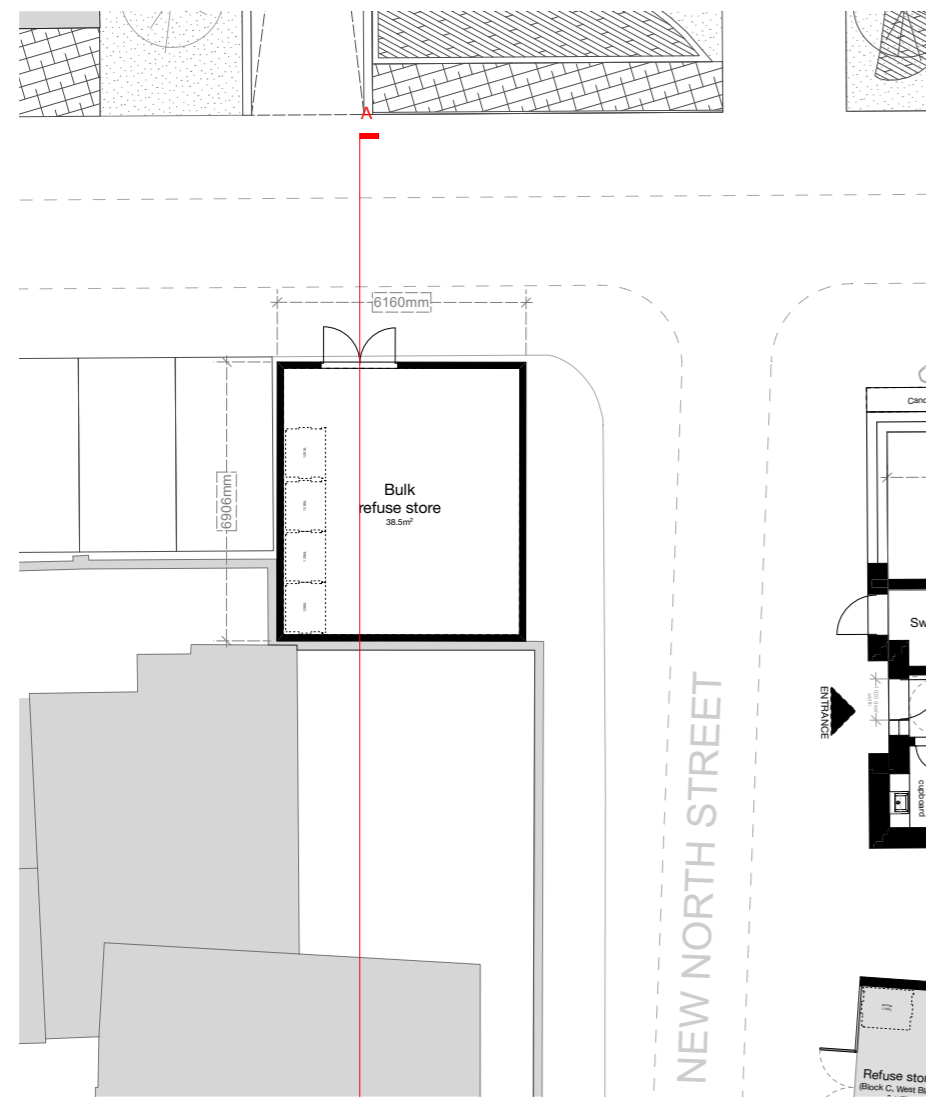
NORTH ELEVATION

# 7.9 PROPOSED BULK REFUSE

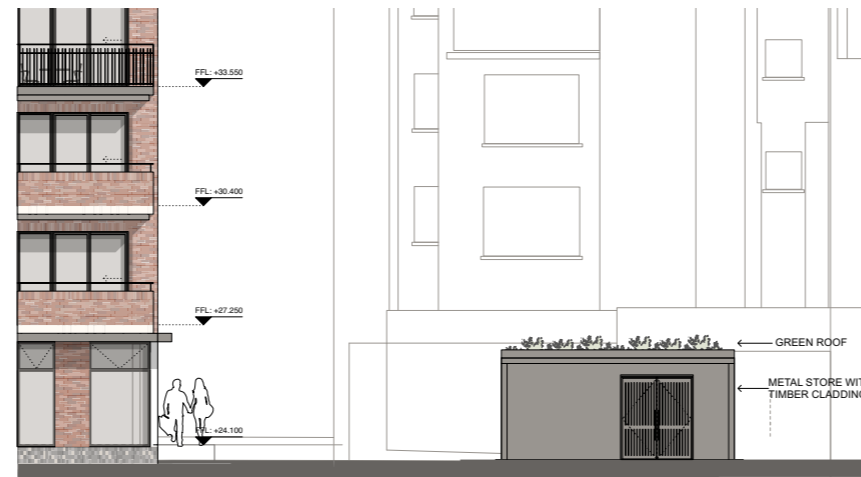
## BULK REFUSE STORE

A new bulky refuse store is being proposed and will be constructed as per the metroSTOR product, a secured-by-design store in steel construction then clad in non-combustible and fire protected colour coated steel.

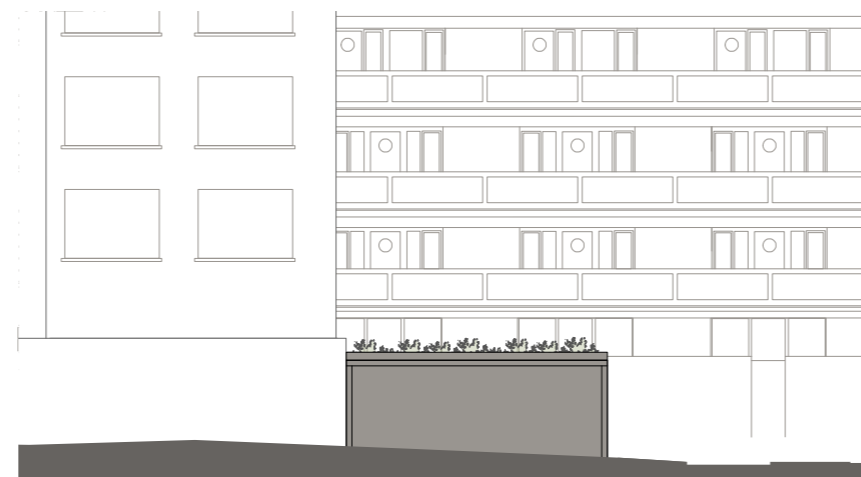
The steel cladding allows the refuse store to also be a simple and elegant addition to the masterplan, with a green roof for added biodiversity.



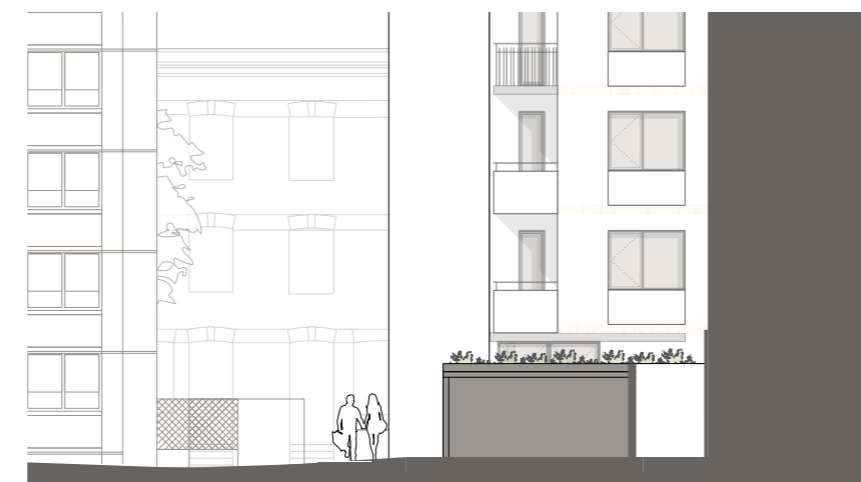
GROUND FLOOR PLAN



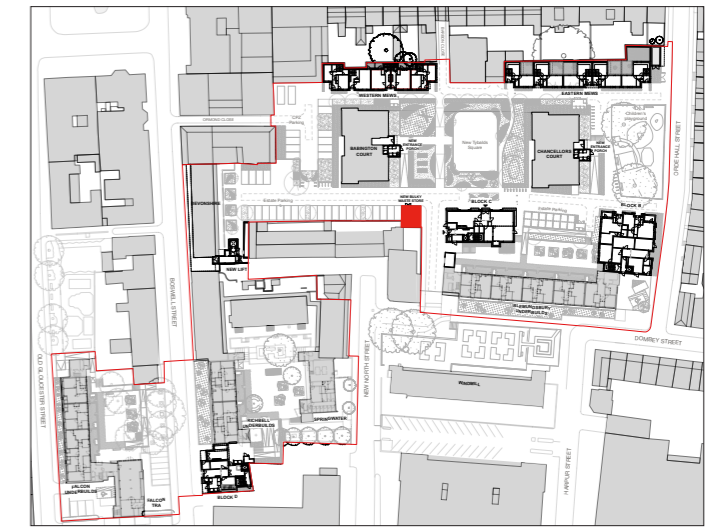
NORTH ELEVATION



EAST ELEVATION



WEST ELEVATION



KEY

**metroSTOR<sup>®</sup>**  
outdoor storage systems



### Firenze Anthracite Grey FR

- 1.2mm Colour Coated Steel
- Anthracite Grey Greencoat Pural BT
- Non-Combustible Fire Protection Board Liner
- Concealed Rivet Fixings
- Mild Steel Welded Frame
- Hot-Dip Galvanised / Colour Powder Coated

	<b>Design Flexibility</b> 5no. standard module widths with a wide range of configuration options create 65no. pre-engineered unit footprints.
	<b>CAD Design Enabled</b> All metroSTOR H Series models are available for download as CAD blocks and BIM objects with NBS Specifications.
	<b>CE Marked Structure</b> UK engineered and manufactured in accordance with Streetspace BS EN 1090, ISO9001:2008, ISO14001 accredited processes.
	<b>Heavy Duty Components</b> Fully welded, all steel frame manufacture with exhaustive testing of components for harsh urban environments.
	<b>Fire Safety</b> Fire Retardant cladding options for BS EN 13501 / BS476 Compliance where 6m building clearance cannot be achieved.
	<b>Customisable Finishes</b> metroSTOR H Series frame is Hot-Dip Galvanised to BS EN 1461 as standard with PPC Coloured options over pre-galvanised base.
	<b>Increased Biodiversity</b> metroSTOR H Series can be specified with integral engineered greenroof option, creating valuable pockets of biodiversity.