

9 DETAILED DESIGN

9.1 PROPOSED MATERIALITY

COLOURS & TEXTURES

Tybalds Estate is characterised by strong brick colours broken up by light metal cladding on most of the blocks' extremities and exposed concrete frames. The main brick colours within the estate and its surroundings are predominantly red brick and London stock or buff bricks. Due to the variation of colour used throughout, the proposed buildings also take this on board.

Blocks B and C follow the red brick route, described here as Type 1, due to their close proximity to Blemundsbury, with the intention of having these three blocks forming a unit.

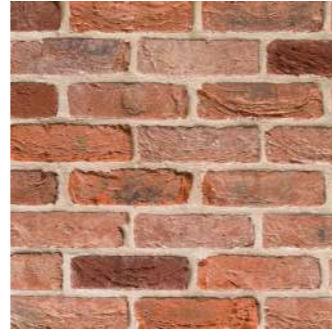
The strong red brick colour of the building will be contrasted with white glazed brick horizontal banding, simulating the concrete slabs that wrap around the façades of the existing buildings. As mentioned in previous sections, the entrances to these blocks are emphasised by an alternating red and glazed white brick pattern.

To seemingly elongate the buildings against the much taller Blemundsbury, all the windows are also combined with recessed brickwork panels under them. These will be a buff brick, tone grey as seen in other neighbouring buildings on Orde Hall Street. The recessed entrances to the blocks will also be surrounded by white glazed bricks to create a light and inviting environment.

Proposed grey buff brick



Proposed red brick mix



Proposed metalwork colour



Proposed white glazed brick



Blemundsbury Facade Photograph



Orde Hall Street Facade Photograph



Precedent - Bourne Estate



Block C North elevation bay



Block B North elevation bay

9.1 PROPOSED MATERIALITY

COLOURS & TEXTURES

The Eastern and Western Mews, together with Block D and the new Tower entrances will be designed following as Type 2 of light buff bricks. This is to soften their impact on their tight individual sites, giving a light and fresh addition to the estate.

In Block D the white glazed brick horizontal banding, simulating the concrete slabs that wrap around the façades of the existing buildings will also be introduced here due to the height of the building. Dark grey brick will be introduced around the entrance to the block similarly to the other blocks.

To add a unique feel to the mews houses, their recessed entrances are surrounded in white glazed bricks, illuminating the entrance point.

Finally, to tie all the newly proposed buildings, all the windows are also combined with recessed light grey buff brickwork panels under them.

Proposed grey buff brick



Proposed beige brick mix



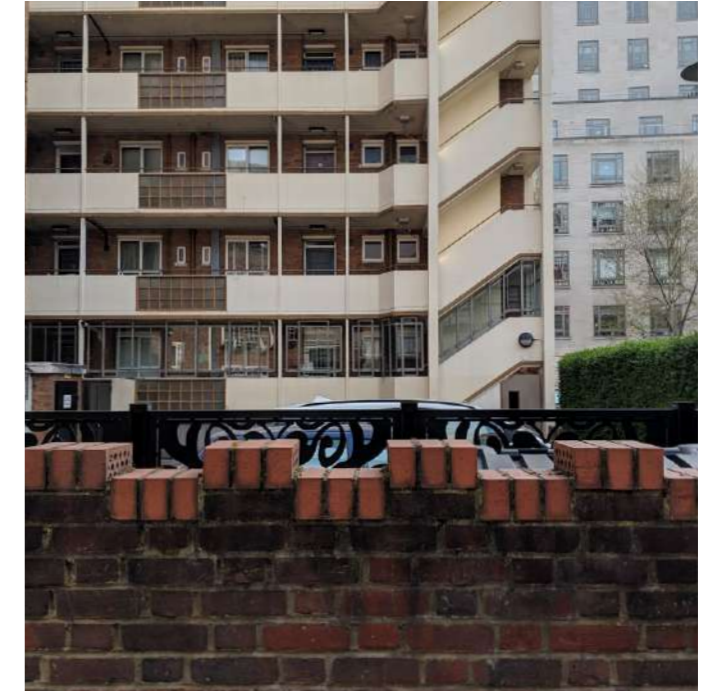
Proposed green glazed bricks



Proposed white glazed brick



Chancellors Facade Photograph



Falcon Facade Detail Photograph



Precedent - Bourne Estate



Mews elevation bay



Block D elevation