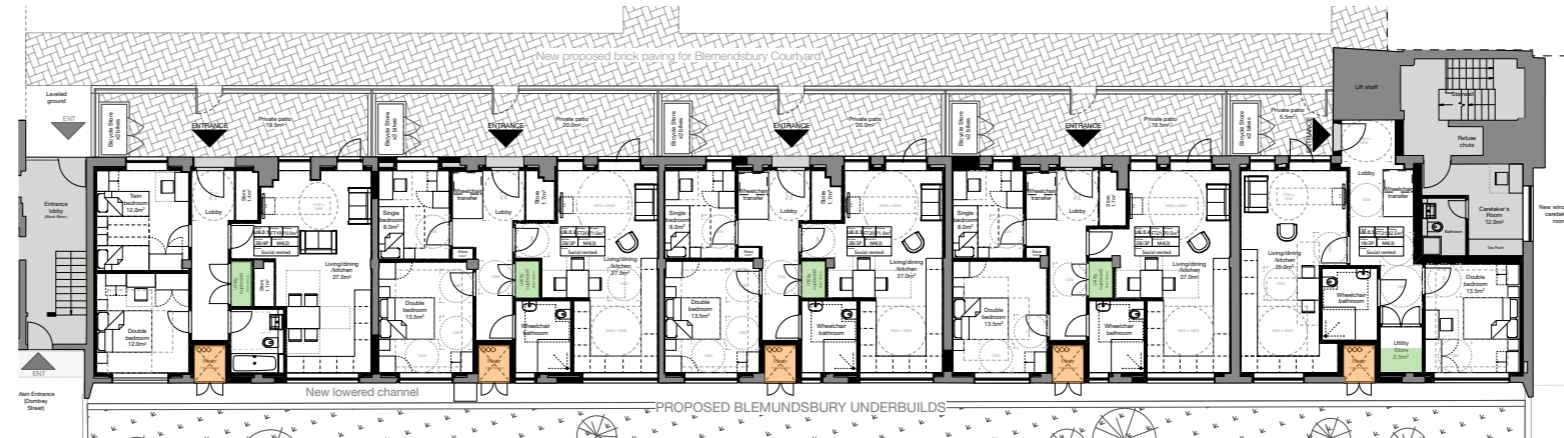


9.4 ENERGY STRATEGY SUMMARY

ENERGY STRATEGY

The underbuilds follow the same strategy but in addition, as mentioned in section 7.5 of this document, riser cupboards have been designed to fit into the units as the existing pipework will be re routed as part of the Better Homes works that Camden is undertaking across the Estate. These works do not form part of this planning application.

Please see TGA's Energy and Sustainability Statement for further details on the energy strategy.



BLEMUNDSBURY UNDERBUILDS LOWER GROUND FLOOR



FALCON UNDERBUILDS LOWER GROUND FLOOR



RICHBELL UNDERBUILDS LOWER GROUND FLOOR

- Riser access Cupboard
- 2x Air Brick location
- Utility Cupboard

KEY



Typical Riser cupboard access doors in Underbuilds

9.4 ENERGY STRATEGY SUMMARY

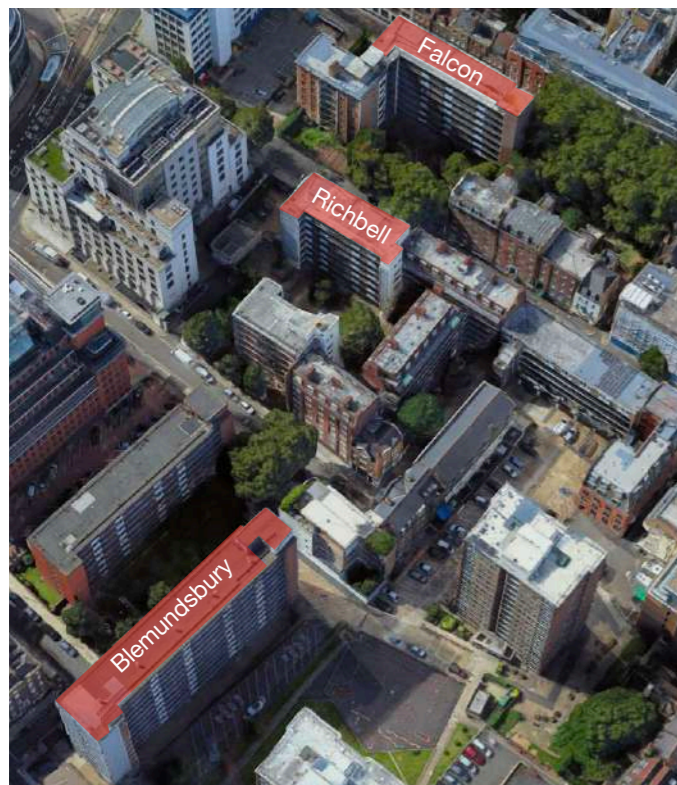
ENERGY STRATEGY - PV PANELS

The last summary heading from the Energy Report is being addressed by introducing PV panels in the existing blocks in which the Underbuilds will be fitted out, namely Blemundsbury, Richbell and Falcon.

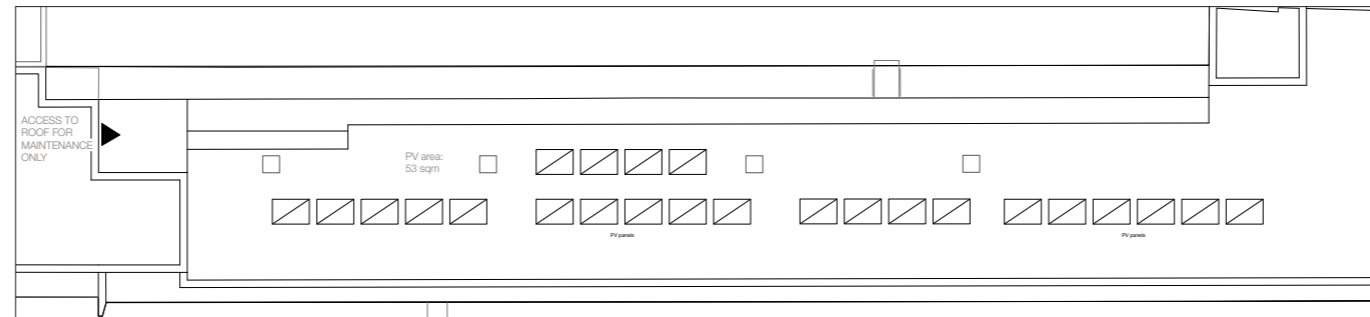
The report states:

“BE GREEN

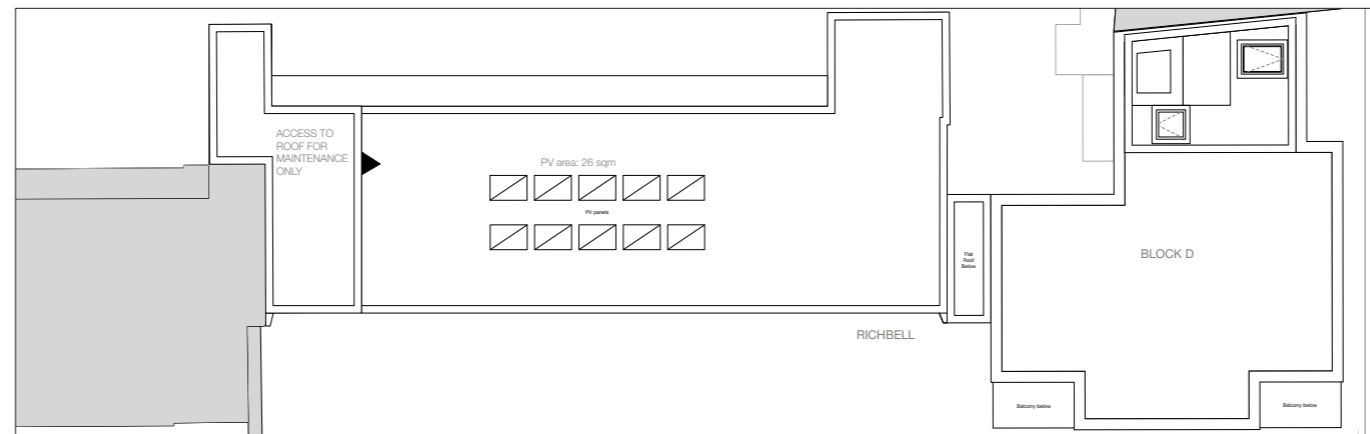
A PV array will provide a further 8% of the development’s energy from Low or Zero Carbon sources, a total of 92%. Implementing Be Green measures of the development achieves a 38.1% improvement against Part L of the Building Regulations.”



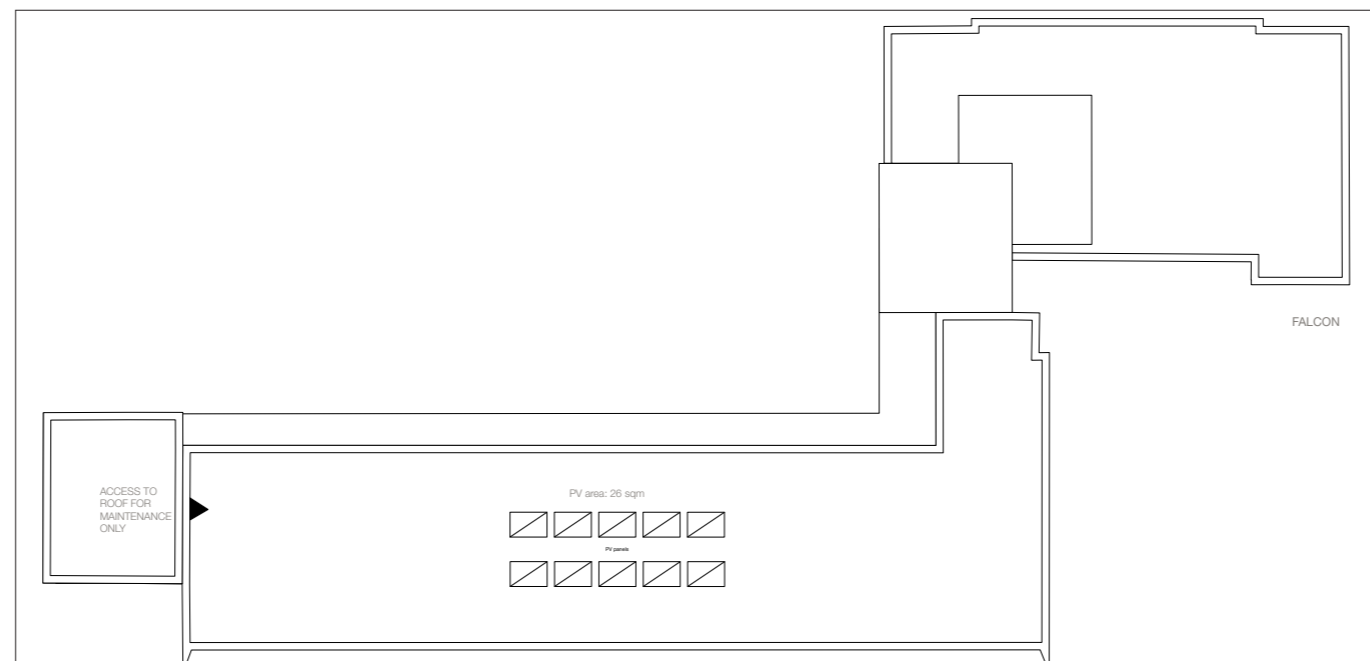
Existing Aerial View



BLEMUNDSBURY UNDERBUILDS LOWER GROUND FLOOR



RICHBELL UNDERBUILDS LOWER GROUND FLOOR



FALCON UNDERBUILDS LOWER GROUND FLOOR