

NEW NORTH STREET

Tybalds Square piazza

Rain gardens with compacted gravel and low planting

Proposed TRA entrance

ENTRANCE

Entrance canopy above

Canopy above

Canopy above

Canopy above

Canopy above

Canopy above

TRA

162m<sup>2</sup>

Entrance

Hall

TRA HALL 01  
47.0m<sup>2</sup>

Switch Room  
6.0m<sup>2</sup>

Store 1.7m<sup>2</sup>

Tea Point

Entrance lobby

Plant

10.0m<sup>2</sup>

Lift

Kitchen  
13.5m<sup>2</sup>

TRA HALL 02  
70.0m<sup>2</sup>

Store  
2.8m<sup>2</sup>

New steps to Blemundsbury  
Courtyard with adjacent  
brick planter

Block C Cycle Hangars

Timber pergola over car  
parking bays

New ramp at 1:23 gradient  
to Blemundsbury  
Courtyard and Underbuilds

Front patios for new Underbuilds flats

BLEMUNDSBURY

Refuse store  
(Block C, West Blem  
& UB)

Refuse  
chute

Notes:

1. Do not scale from this drawing.
2. All dimensions to be verified prior to the commencement of any work or the production of any shop drawings.
3. Matthew Lloyd Architects (MLA) shall be notified in writing of any discrepancies.
4. Survey and boundaries indicative only.
5. Proposals are subject to utilities surveys and specialist consultants' input & coordination.
6. Any areas indicated are approximate and indicative only.
7. Where an item is covered by drawings in different scales the larger scale drawing is to be worked to.
8. Drawing to be read in conjunction with relevant consultant's drawings and specifications.
9. Where MLA services on a project do not include for site inspections and work surveys, MLA do not warrant that 'as built' issue drawings are a complete and accurate record of what has been built.
10. MLA shall not be liable for the consequences of any use, misuse or variation of this drawing for any purpose other than that for which it was originally prepared.
11. This title block is copyright of MLA and should not be used, removed, or altered without permission and clear identification.

KEY:



Revisions:

PLANNING



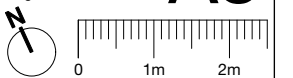
MatthewLloydArchitects<sup>LLP</sup>

1b The Hangar  
Perseverance Works  
38 Kingsland Road  
London E2 8DD  
T 020 7613 1934  
email: mail@matthewlloyd.co.uk  
www.matthewlloyd.co.uk

©2021

Original Sheet Size

A3



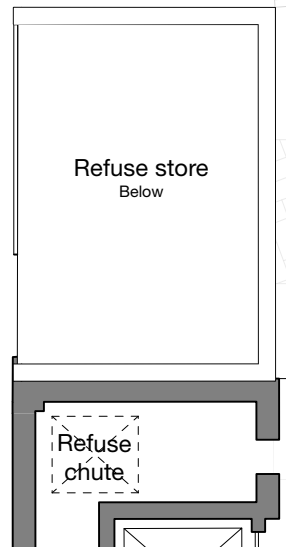
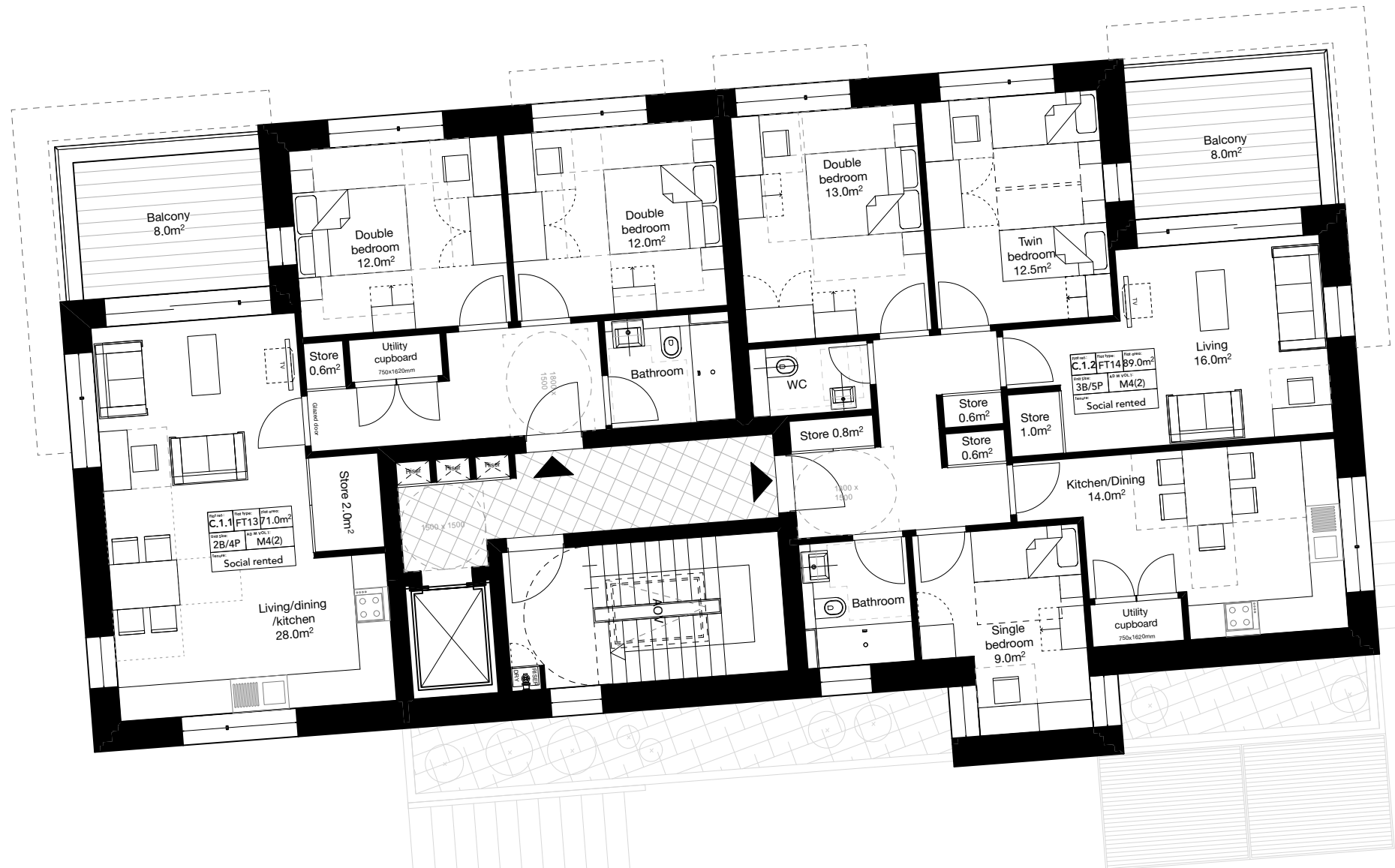
Date: Jul-21 Scale: 1:100@A3 Checked by: ASp Drawn by: GP

Project: TYBALDS ESTATE  
CAMDEN

Drawing title: BLOCK C: PROPOSED GROUND FLOOR  
PLAN

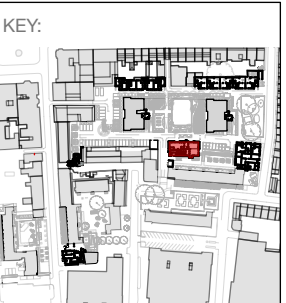
Reference: TE Dep. No: C-100 Rev: -

NEW NORTH STREET



BLEMUNDSBURY

- Notes:
1. Do not scale from this drawing.
  2. All dimensions to be verified prior to the commencement of any work or the production of any shop drawings.
  3. Matthew Lloyd Architects (MLA) shall be notified in writing of any discrepancies.
  4. Survey and boundaries indicative only.
  5. Proposals are subject to utilities surveys and specialist consultants' input & coordination.
  6. Any areas indicated are approximate and indicative only.
  7. Where an item is covered by drawings in different scales the larger scale drawing is to be worked to.
  8. Drawing to be read in conjunction with relevant consultant's drawings and specifications.
  9. Where MLA services on a project do not include for site inspections and work surveys, MLA do not warrant that 'as built' issue drawings are a complete and accurate record of what has been built.
  10. MLA shall not be liable for the consequences of any use, misuse or variation of this drawing for any purpose other than that for which it was originally prepared.
  11. This title block is copyright of MLA and should not be used, removed, or altered without permission and clear identification.

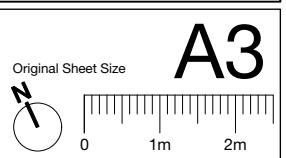


Revisions:

PLANNING

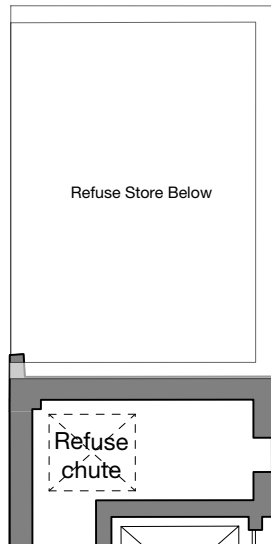
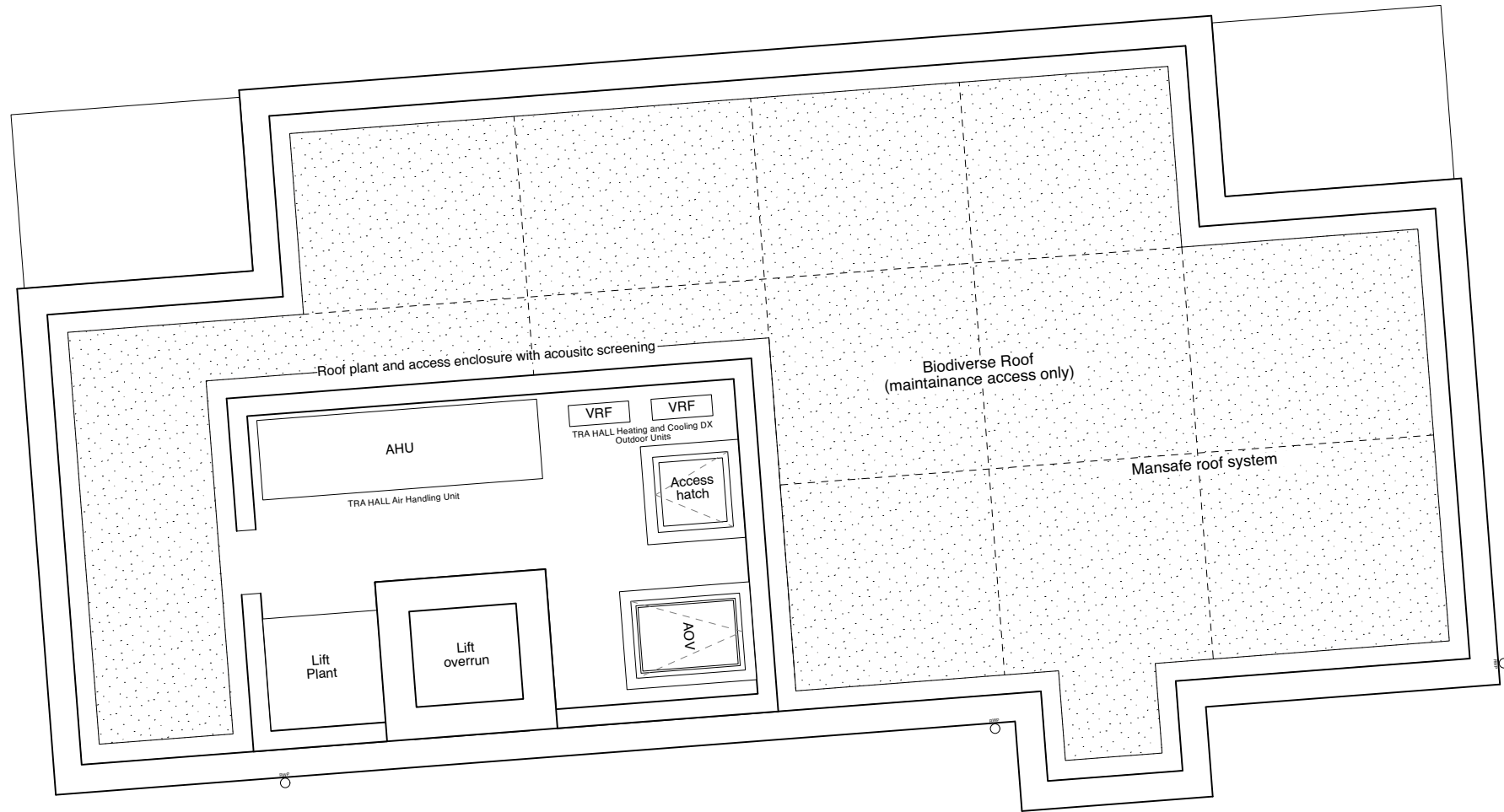


**MatthewLloydArchitects** LLP  
1b The Hangar  
Perseverance Works  
38 Kingsland Road  
London E2 8DD  
T 020 7613 1934  
email: mail@matthewlloyd.co.uk  
www.matthewlloyd.co.uk



Date:	Jul-21	Scale:	1:100@A3	Checked by:	ASp	Drawn by:	GP
Project:	TYBALDS ESTATE CAMDEN						
Drawing title:	BLOCK C: PROPOSED FIRST, SECOND & THIRD FLOOR PLAN						
Reference:	TE	Dep. No:	C-101	Rev:	-		

NEW NORTH STREET



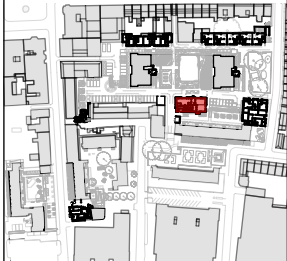
BLEMUNDSBURY



Notes:

1. Do not scale from this drawing.
2. All dimensions to be verified prior to the commencement of any work or the production of any shop drawings.
3. Matthew Lloyd Architects (MLA) shall be notified in writing of any discrepancies.
4. Survey and boundaries indicative only.
5. Proposals are subject to utilities surveys and specialist consultants' input & coordination.
6. Any areas indicated are approximate and indicative only.
7. Where an item is covered by drawings in different scales the larger scale drawing is to be worked to.
8. Drawing to be read in conjunction with relevant consultant's drawings and specifications.
9. Where MLA services on a project do not include for site inspections and work surveys, MLA do not warrant that 'as built' issue drawings are a complete and accurate record of what has been built.
10. MLA shall not be liable for the consequences of any use, misuse or variation of this drawing for any purpose other than that for which it was originally prepared.
11. This title block is copyright of MLA and should not be used, removed, or altered without permission and clear identification.

KEY:



Revisions:

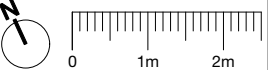
PLANNING



**MatthewLloydArchitects** LLP  
1b The Hangar  
Perseverance Works  
38 Kingsland Road  
London E2 8DD  
T 020 7613 1934  
email: mail@matthewlloyd.co.uk  
www.matthewlloyd.co.uk  
©2021

Original Sheet Size

A3



Date: Jul-21	Scale: 1:100@A3	Checked by: ASp	Drawn by: GP
Project: TYBALDS ESTATE CAMDEN			
Drawing title: BLOCK C: PROPOSED ROOF PLAN			
Reference: TE	Dep. No: C-102	Rev: -	

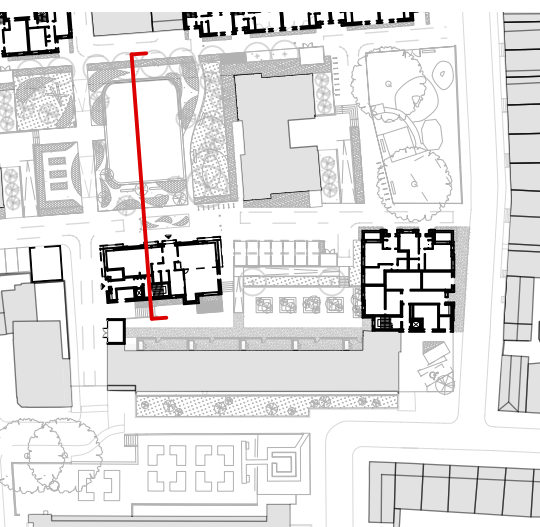




Notes:

1. Do not scale from this drawing.
2. All dimensions to be verified prior to the commencement of any work or the production of any shop drawings.
3. Matthew Lloyd Architects (MLA) shall be notified in writing of any discrepancies.
4. Survey and boundaries indicative only.
5. Proposals are subject to utilities surveys and specialist consultants' input & coordination.
6. Any areas indicated are approximate and indicative only.
7. Where an item is covered by drawings in different scales the larger scale drawing is to be worked to.
8. Drawing to be read in conjunction with relevant consultant's drawings and specifications.
9. Where MLA services on a project do not include for site inspections and work surveys, MLA do not warrant that 'as built' issue drawings are a complete and accurate record of what has been built.
10. MLA shall not be liable for the consequences of any use, misuse or variation of this drawing for any purpose other than that for which it was originally prepared.
11. This title block is copyright of MLA and should not be used, removed, or altered without permission and clear identification.

Revisions:

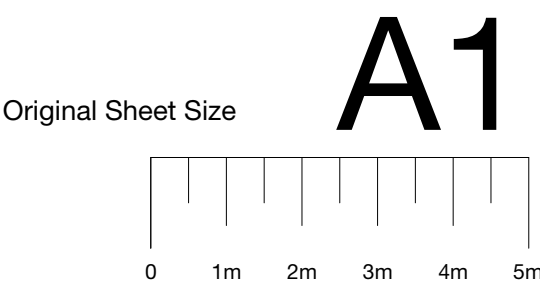


PLANNING



MatthewLloydArchitects LLP

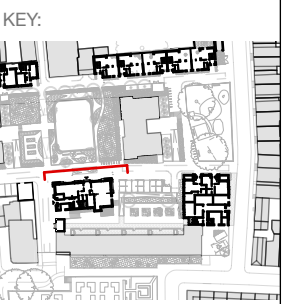
1b The Hangar  
Perseverance Works  
38 Kingsland Road  
London E2 8DD  
T 020 7613 1934  
email: mail@matthewlloyd.co.uk  
www.matthewlloyd.co.uk



Date:	Jul-21	Scale:	1:100 @ A1	Checked by:	ASp	Drawn by:	GP
Project:	TYBALDS ESTATE CAMDEN						
Drawing title:	BLOCK C: PROPOSED CROSS SECTION LOOKING EAST						
Reference:	TE	Dwg. No:	C-200	Rev.:	-		



- Notes:
1. Do not scale from this drawing.
  2. All dimensions to be verified prior to the commencement of any work or the production of any shop drawings.
  3. Matthew Lloyd Architects (MLA) shall be notified in writing of any discrepancies.
  4. Survey and boundaries indicative only.
  5. Proposals are subject to utilities surveys and specialist consultants' input & coordination.
  6. Any areas indicated are approximate and indicative only.
  7. Where an item is covered by drawings in different scales the larger scale drawing is to be worked to.
  8. Drawing to be read in conjunction with relevant consultant's drawings and specifications.
  9. Where MLA services on a project do not include for site inspections and work surveys, MLA do not warrant that 'as built' issue drawings are a complete and accurate record of what has been built.
  10. MLA shall not be liable for the consequences of any use, misuse or variation of this drawing for any purpose other than that for which it was originally prepared.
  11. This title block is copyright of MLA and should not be used, removed, or altered without permission and clear identification.



1. Multi-tone red brick throughout building
2. Powder coated aluminium windows
3. Light-grey buff brick panel under windows indented half-a-brick in
4. White glazed brick banding
5. Grey painted metalwork for balcony balustrade
6. Brick balconies on lower floors for increased privacy and acoustic protection
7. Powder coated aluminium corner windows under metal canopy
8. White glazed brick pattern alternating with multi-tone red brick and blue tiled signage to be inserted in brickwork
9. Dark grey mix brickwork at base of building
10. Multi-tone red brick piers extruded by half a brick
11. Timber pergola with creeper plants over bay car parking
12. Powder coated aluminium acoustic screen roof plant enclosure 2.2m high

Revisions:

PLANNING
<b>MatthewLloydArchitects</b> LLP
1b The Hangar Perseverance Works 38 Kingsland Road London E2 8DD T 020 7613 1934 email: mail@matthewlloyd.co.uk www.matthewlloyd.co.uk
©2021

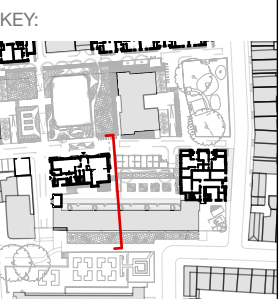
Original Sheet Size **A3**

Date:	Jul-21	Scale:	1:100@A3	Checked by:	ASp	Drawn by:	GP
Project:	TYBALDS ESTATE CAMDEN						
Drawing title:	BLOCK C: PROPOSED ELEVATION LOOKING SOUTH						
Reference:	TE	Dep. No:	C-300	Rev:	-		





- Notes:
1. Do not scale from this drawing.
  2. All dimensions to be verified prior to the commencement of any work or the production of any shop drawings.
  3. Matthew Lloyd Architects (MLA) shall be notified in writing of any discrepancies.
  4. Survey and boundaries indicative only.
  5. Proposals are subject to utilities surveys and specialist consultants' input & coordination.
  6. Any areas indicated are approximate and indicative only.
  7. Where an item is covered by drawings in different scales the larger scale drawing is to be worked to.
  8. Drawing to be read in conjunction with relevant consultant's drawings and specifications.
  9. Where MLA services on a project do not include for site inspections and work surveys, MLA do not warrant that 'as built' issue drawings are a complete and accurate record of what has been built.
  10. MLA shall not be liable for the consequences of any use, misuse or variation of this drawing for any purpose other than that for which it was originally prepared.
  11. This title block is copyright of MLA and should not be used, removed, or altered without permission and clear identification.



- KEY:
1. Multi-tone red brick throughout building
  2. Powder coated aluminium windows
  3. Light-grey buff brick panel under windows indented half-a-brick in
  4. White glazed brick banding
  5. Grey painted metalwork for balcony balustrade
  6. Brick balconies on lower floors for increased privacy and acoustic protection
  7. Powder coated aluminium corner windows under metal canopy
  8. Dark grey mix brickwork at base of building
  9. Dark grey mix brickwork for planter at either side of bay window extrusion
  10. Block C cycle Hangars
  11. Powder coated aluminium acoustic screen roof plant enclosure 2.2m high

Revisions:

PLANNING



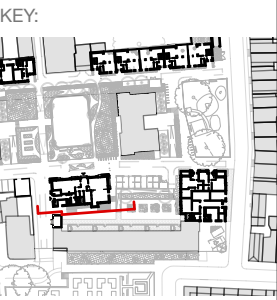
**MatthewLloydArchitects** LLP  
1b The Hangar  
Perseverance Works  
38 Kingsland Road  
London E2 8DD  
T 020 7613 1934  
email: mail@matthewlloyd.co.uk  
www.matthewlloyd.co.uk  
©2021

Original Sheet Size **A3**  
0 1m 2m

Date:	Jul-21	Scale:	1:100@A3	Checked by:	ASp	Drawn by:	GP
Project:	TYBALDS ESTATE CAMDEN						
Drawing title:	BLOCK C: PROPOSED ELEVATION LOOKING WEST						
Reference:	TE	Dep. No:	C-301	Rev:	-		



- Notes:
1. Do not scale from this drawing.
  2. All dimensions to be verified prior to the commencement of any work or the production of any shop drawings.
  3. Matthew Lloyd Architects (MLA) shall be notified in writing of any discrepancies.
  4. Survey and boundaries indicative only.
  5. Proposals are subject to utilities surveys and specialist consultants' input & coordination.
  6. Any areas indicated are approximate and indicative only.
  7. Where an item is covered by drawings in different scales the larger scale drawing is to be worked to.
  8. Drawing to be read in conjunction with relevant consultant's drawings and specifications.
  9. Where MLA services on a project do not include for site inspections and work surveys, MLA do not warrant that 'as built' issue drawings are a complete and accurate record of what has been built.
  10. MLA shall not be liable for the consequences of any use, misuse or variation of this drawing for any purpose other than that for which it was originally prepared.
  11. This title block is copyright of MLA and should not be used, removed, or altered without permission and clear identification.



1. Multi-tone red brick throughout building
2. Powder coated aluminium windows
3. Light-grey buff brick panel under windows indented half-a-brick in
4. White glazed brick banding
5. Grey painted metal canopy
6. Grey painted metal louvered double door to plant room
7. Dark grey mix brickwork at base of building
8. Block C cycle Hangars
9. Dark grey mix brickwork for planter at either side of bay window extrusion
10. Grey painted metalwork stair balustrade to Blemundsbury Courtyard
11. Powder coated aluminium acoustic screen roof plant enclosure 2.2m high

Revisions:

PLANNING



**MatthewLloydArchitects** LLP

1b The Hangar  
Perseverance Works  
38 Kingsland Road  
London E2 8DD  
T 020 7613 1934  
email: mail@matthewlloyd.co.uk  
www.matthewlloyd.co.uk

©2021

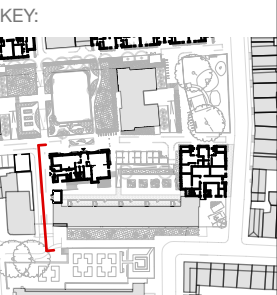
Original Sheet Size **A3**

0 1m 2m

Date:	Jul-21	Scale:	1:100@A3	Checked by:	ASp	Drawn by:	GP
Project:	TYBALDS ESTATE CAMDEN						
Drawing title:	BLOCK C: PROPOSED ELEVATION LOOKING NORTH						
Reference:	TE	Dwg. No.:	C-302	Rev:	-		



- Notes:
1. Do not scale from this drawing.
  2. All dimensions to be verified prior to the commencement of any work or the production of any shop drawings.
  3. Matthew Lloyd Architects (MLA) shall be notified in writing of any discrepancies.
  4. Survey and boundaries indicative only.
  5. Proposals are subject to utilities surveys and specialist consultants' input & coordination.
  6. Any areas indicated are approximate and indicative only.
  7. Where an item is covered by drawings in different scales the larger scale drawing is to be worked to.
  8. Drawing to be read in conjunction with relevant consultant's drawings and specifications.
  9. Where MLA services on a project do not include for site inspections and work surveys, MLA do not warrant that 'as built' issue drawings are a complete and accurate record of what has been built.
  10. MLA shall not be liable for the consequences of any use, misuse or variation of this drawing for any purpose other than that for which it was originally prepared.
  11. This title block is copyright of MLA and should not be used, removed, or altered without permission and clear identification.



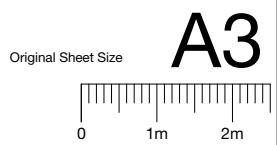
1. Multi-tone red brick throughout building
2. Powder coated aluminium windows
3. Light-grey buff brick panel under windows indented half-a-brick in
4. Grey painted metalwork for balcony balustrade
5. White glazed brick banding
6. Brick balconies on lower floors for increased privacy and acoustic protection
7. Powder coated aluminium corner windows under metal canopy
8. Dark grey mix brickwork at base of building
9. White glazed brick pattern alternating with multi-tone red brick and blue tiled signage to be inserted in brickwork
10. Multi-tone red brick refuse store enclosure with grey coloured metal screen
11. Powder coated aluminium acoustic screen roof plant enclosure 2.2m high

Revisions:

PLANNING

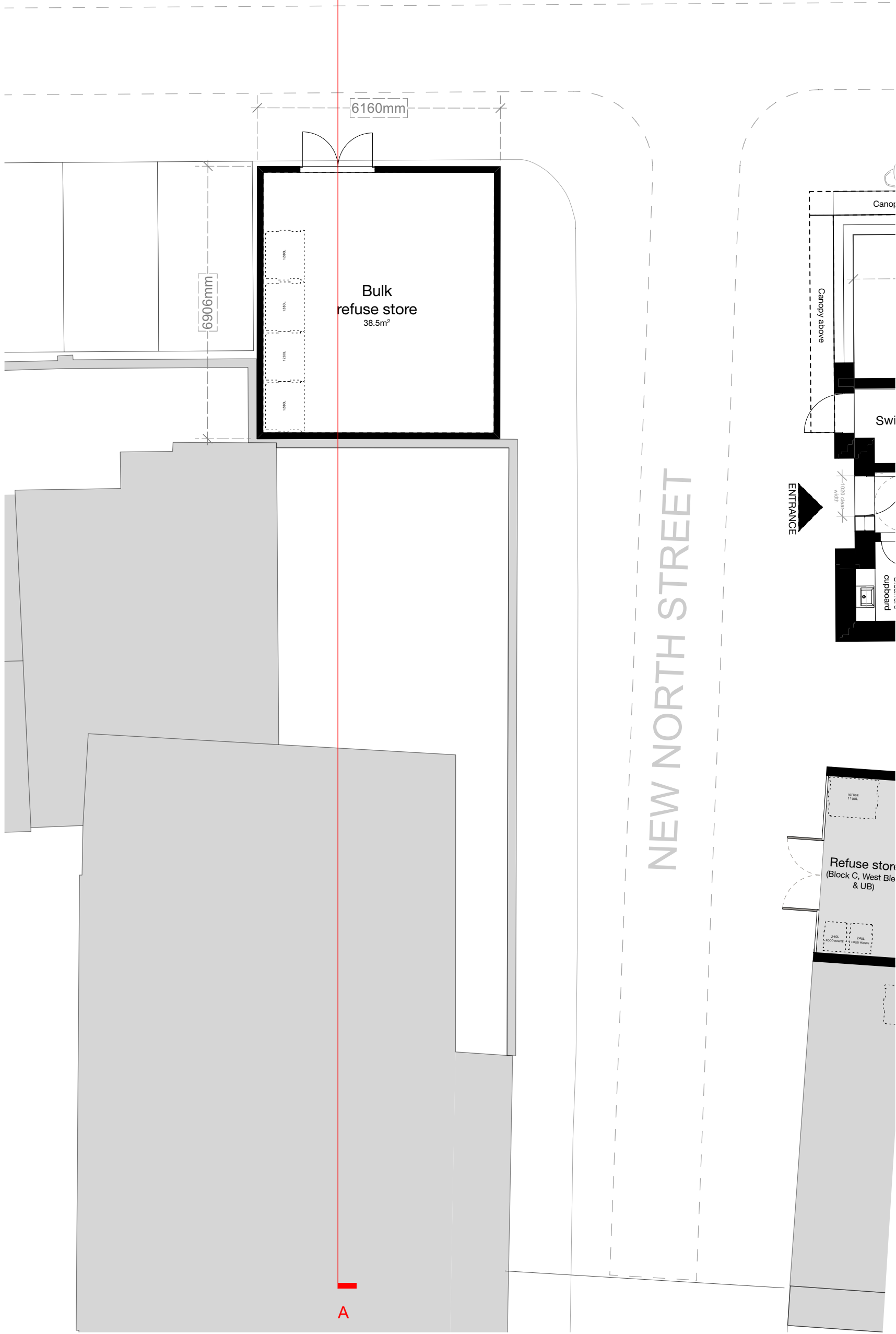
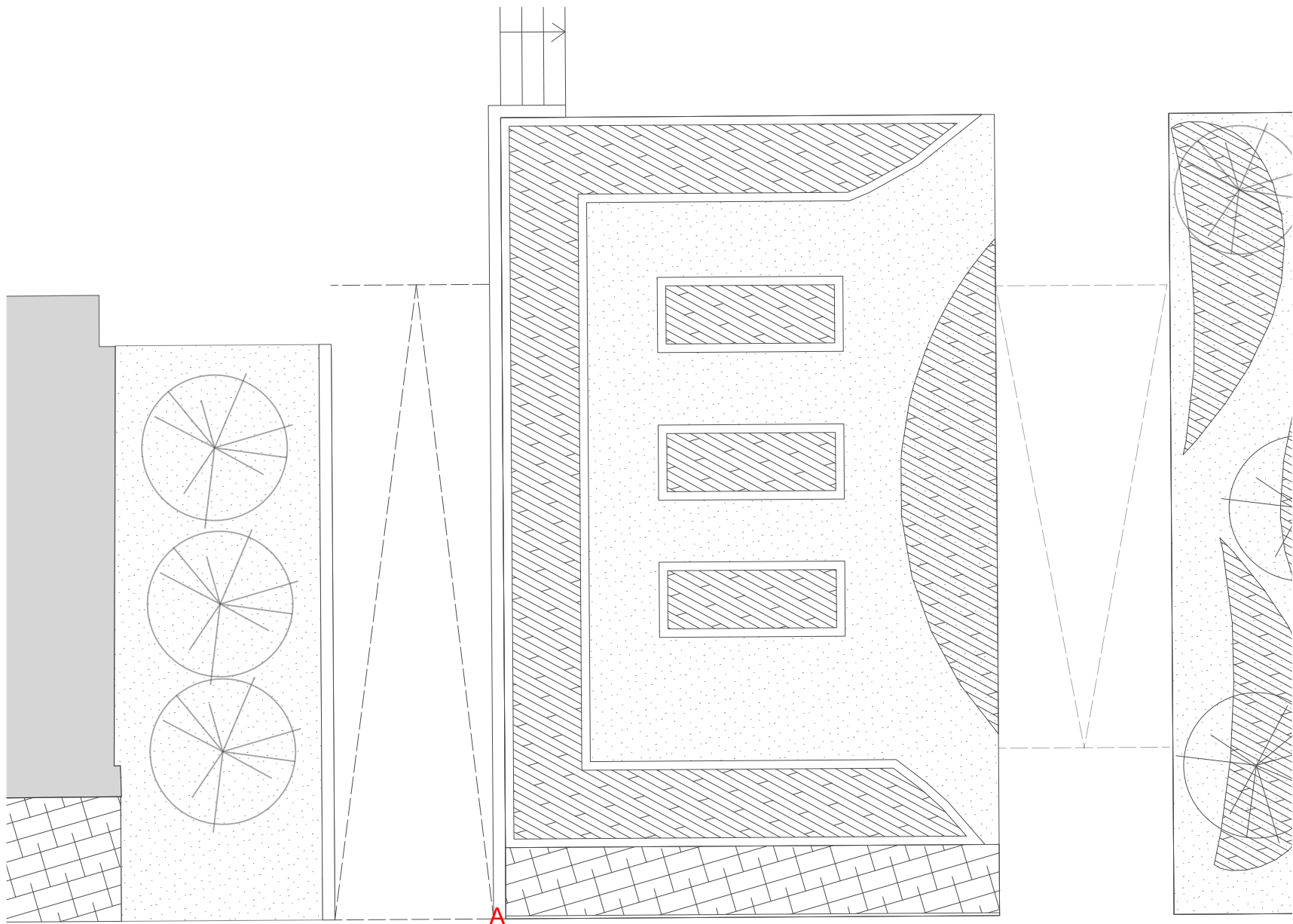


**MatthewLloydArchitects** LLP  
1b The Hangar  
Perseverance Works  
38 Kingsland Road  
London E2 8DD  
T 020 7613 1934  
email: mail@matthewlloyd.co.uk  
www.matthewlloyd.co.uk

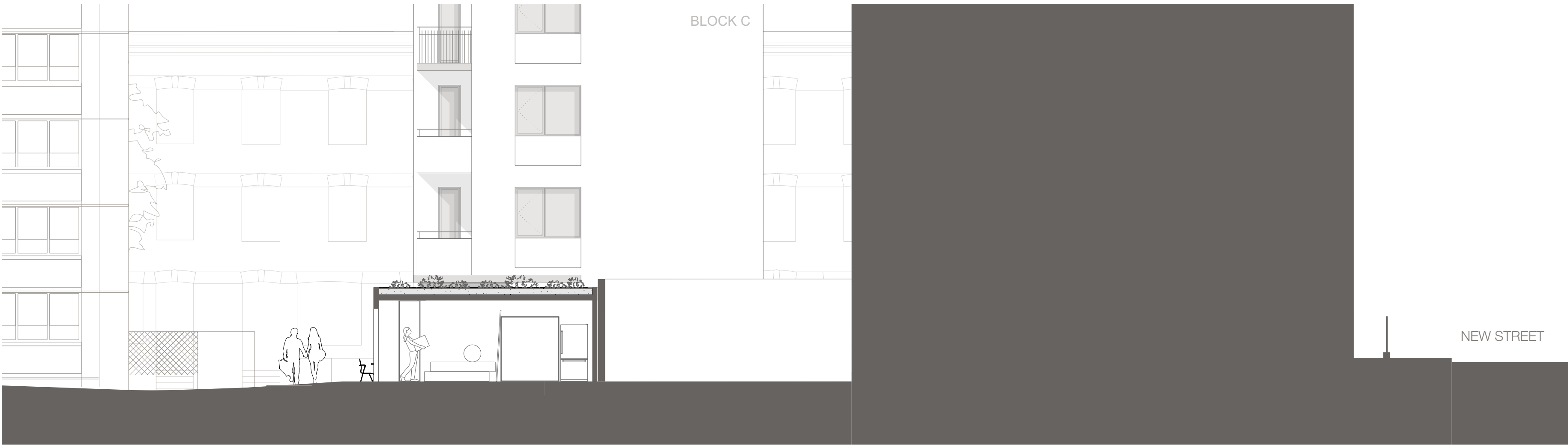


Date:	Jul-21	Scale:	1:100@A3	Checked by:	ASp	Drawn by:	GP
Project:	TYBALDS ESTATE CAMDEN						
Drawing title:	BLOCK C: PROPOSED ELEVATION LOOKING EAST						
Reference:	TE	Dep. No:	C-303	Rev:	-		





PROPOSED PLAN



PROPOSED SECTION A-A



PROPOSED NORTH ELEVATION



PROPOSED EAST ELEVATION

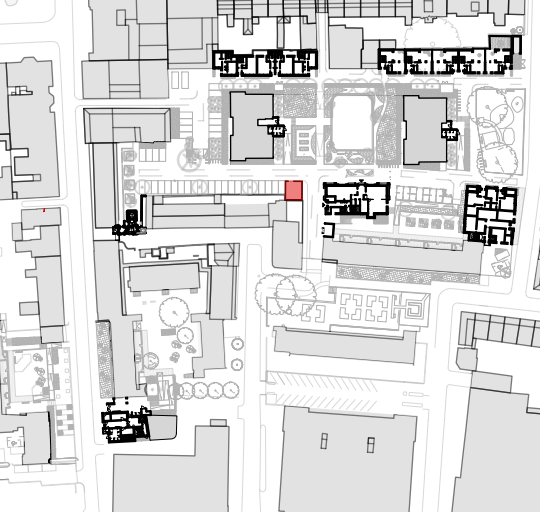


PROPOSED WEST ELEVATION

Notes:

1. Do not scale from this drawing.
2. All dimensions to be verified prior to the commencement of any work or the production of any shop drawings.
3. Matthew Lloyd Architects (MLA) shall be notified in writing of any discrepancies.
4. Survey and boundaries indicative only.
5. Proposals are subject to utilities surveys and specialist consultants' input & coordination.
6. Any areas indicated are approximate and indicative only.
7. Where an item is covered by drawings in different scales the larger scale drawing is to be worked to.
8. Drawing to be read in conjunction with relevant consultant's drawings and specifications.
9. Where MLA services on a project do not include for site inspections and work surveys, MLA do not warrant that 'as built' issue drawings are a complete and accurate record of what has been built.
10. MLA shall not be liable for the consequences of any use, misuse or variation of this drawing for any purpose other than that for which it was originally prepared.
11. This title block is copyright of MLA and should not be used, removed, or altered without permission and clear identification.

KEY:



Revisions:

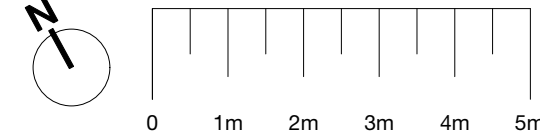
PLANNING



MatthewLloydArchitects LLP

1b The Hangar  
Perseverance Works  
38 Kingsland Road  
London E2 8DD  
T 020 7613 1934  
email: mail@matthewlloyd.co.uk  
www.matthewlloyd.co.uk

Original Sheet Size



Date: Jul-21 Scale: 1:100 @ A1 Checked by: ASp Drawn by: GP

Project: TYBALDS ESTATE CAMDEN

Drawing title: PROPOSED BULKY REFUSE STORE

Reference: TE Dwg. No: BR-100 Rev: -