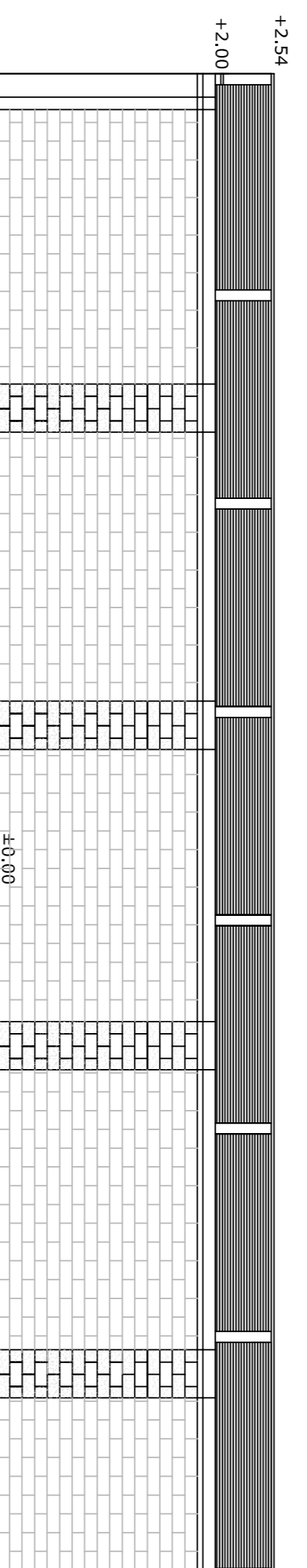


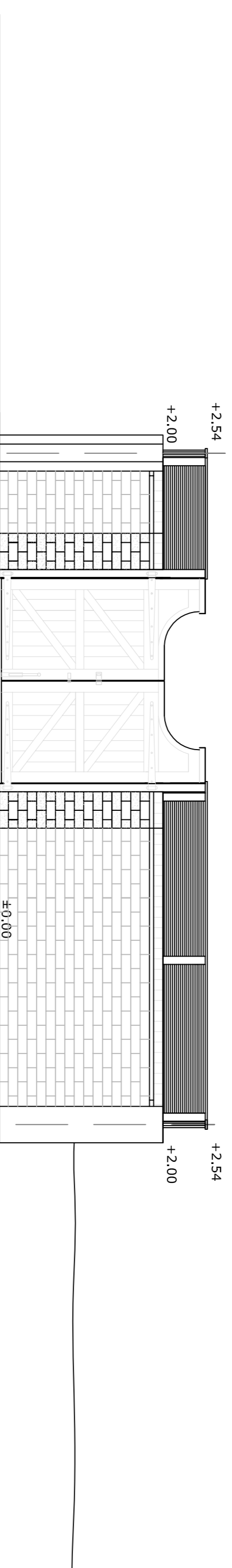
Existing boundary wall in red stock bricks in English bond flush pointed with brick on edge coping, creasing tile; piers built with Engineering brick quoins and matching red stocks; timber trellis above.

Garden Wall to No. 11 Gainsborough Gardens - UNCHANGED



New boundary wall to match existing between 11 and 12 Gainsborough Gardens in red stock bricks in English bond flush pointed with brick on edge coping, creasing tile; piers built with Engineering brick quoins and matching red stocks; timber trellis above.

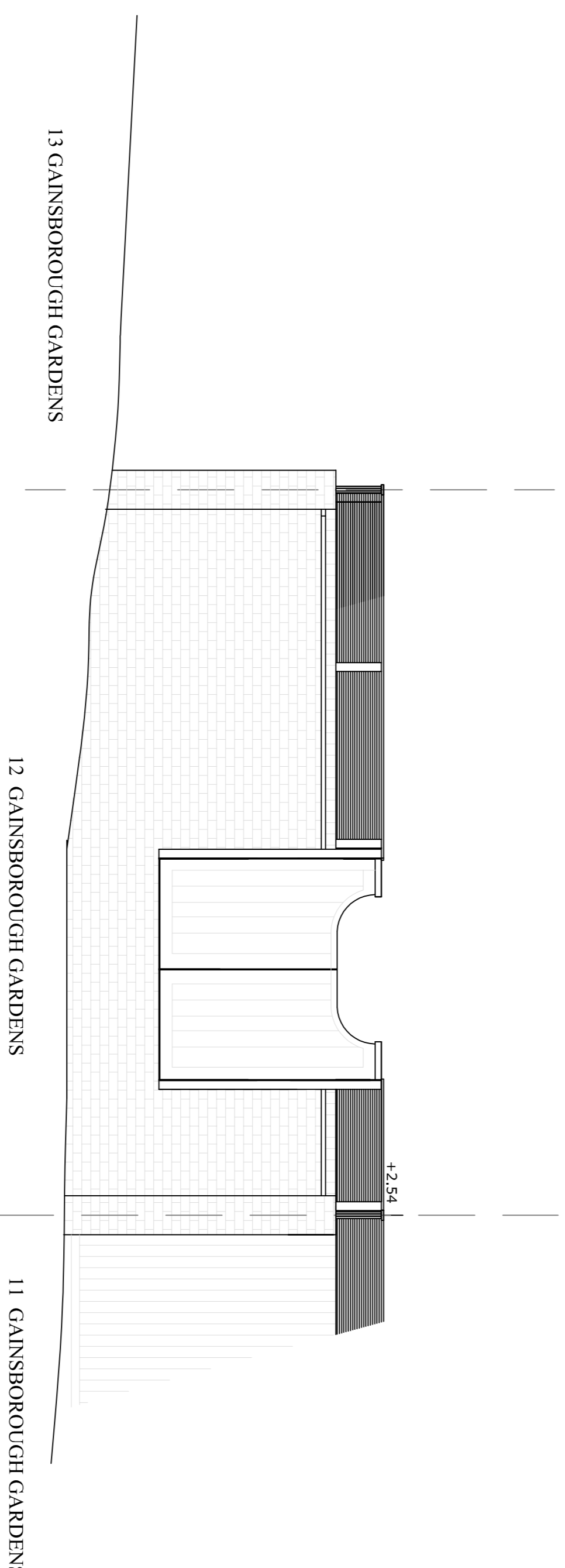
Garden Wall to boundary between Nos. 12 and 13 Gainsborough Gardens



New boundary wall to match existing between 11 and 12 Gainsborough Gardens in red stock bricks in English bond flush pointed with brick on edge coping, creasing tile; piers built with Engineering brick quoins and matching red stocks; timber trellis above; pair of framed ledged and braced gates with mortice and tenoned joints fabricated from Scandinavian Redwood (FSC) with all edges chamfered to match existing hung off 100x100mm Redwood posts; re-use existing wrought iron traditional hinges. Timber trellis over to match boundary wall with No. 11.

Infill lower patio area with bricks from demolition well crushed and compacted, hardcore and 300mm topsoil. Continue face brick wall at low level to contain infill, visible from road side only.

End wall facing Christchurch Hill



End wall elevation from Christchurch Hill

REVISIONS	
A	18/2021 Planters removed

PROJECT		12 Gainsborough Gardens NWS	
DRAWING		Elevations	
SCALE	1:50@A1	DRAWING NO.	20.06.05
DATE	18/2020		
Copyright ©2019 HAINE & CO. LTD.			
ARCHITECTURAL DESIGN AND PROJECT MANAGEMENT		HAINE & CO. ARCHITECTURAL & INTERIOR DESIGN Haine & Co. Ltd. 6 Lamballe Place Northampton NN1 1JH Phone: 07721 339009 Email: roh@haineco.com Website: www.haineco.com	