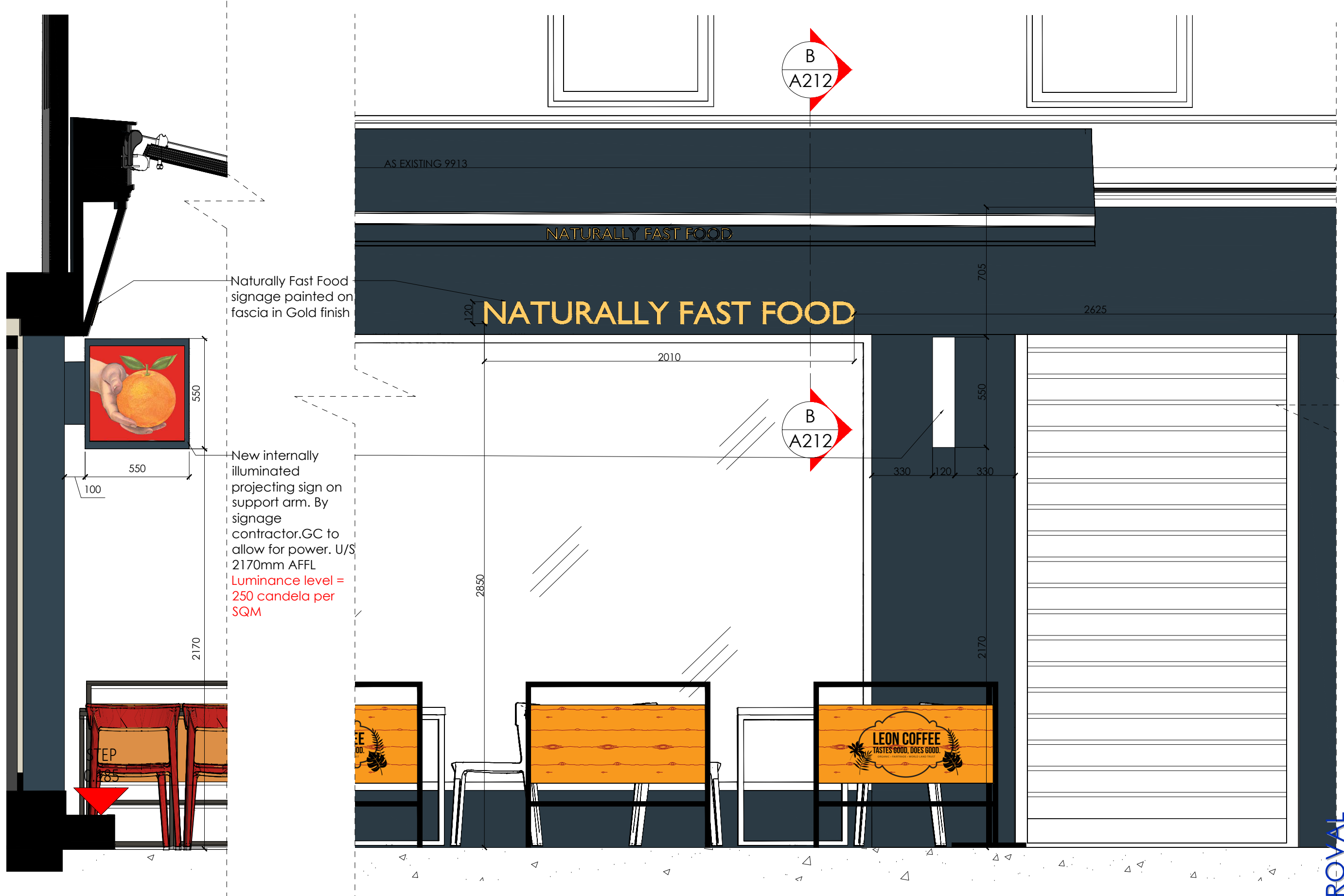


Written dimensions on these drawings shall take precedence over scaled dimensions. Contractors shall verify and be responsible for all dimensions and conditions on the project and this office must be notified of any variations from the dimensions and conditions shown by these drawings prior to commencement of any work. All contractors are deemed to have made themselves aware of site conditions prior to entering into any contract. Shopfitting details must be submitted to this office for approval before proceeding with fabrication. This drawing is the property of rpa. Copyright is reserved by them and the drawing is issued on condition that it is not copied, reproduced, retained or disclosed to any unauthorised person, either wholly or in part without the consent in writing of rpa.



Naturally Fast Food signage painted on fascia in Gold finish

New internally illuminated projecting sign on support arm. By signage contractor.GC to allow for power. U/S 2170mm AFFL
 Luminance level = 250 candela per SQM

Bus stop signage- as proposed
 scale - 1:10 @ A1 / 1:20@ A3

FOR APPROVAL

23.07.2021	updated to latest feedback	JC	CS
14.07.2021	CREATED	JC	CS

client
LEON Borough Market
 18-20 Southwark St.
 London SE1 1TJ
 02070897070

address
CAMDEN
 190 Camden High street,
 Camden
 London
 NW1 8QP

client job no.
 -
 drawing title
 Signage
 As proposed

drawn by	date	checked
JC	23.06.2021	CS
job no.	drawing no.	revision
2007120	A212	A