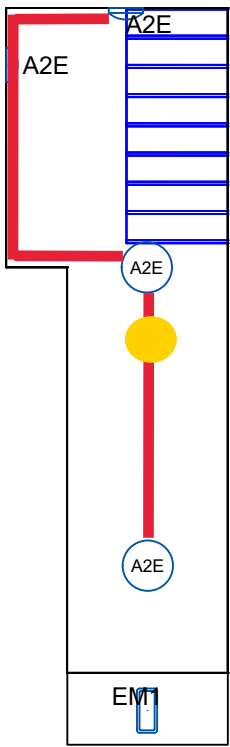
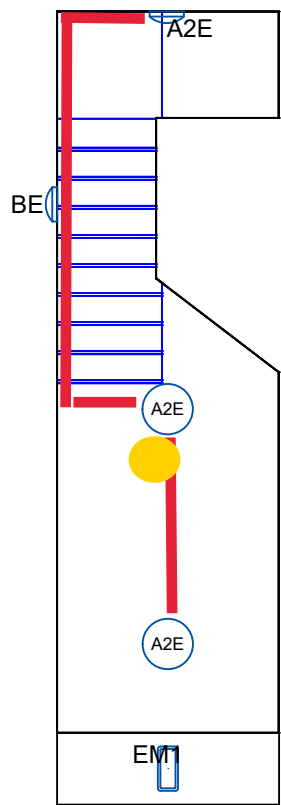
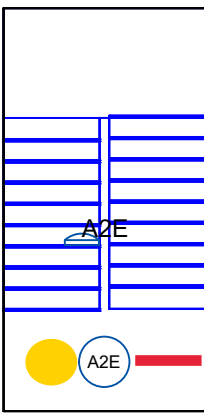
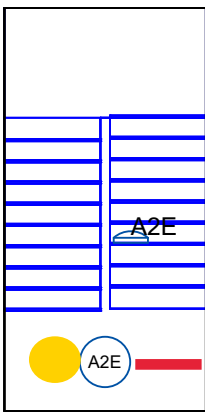
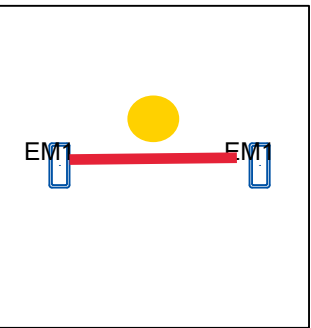
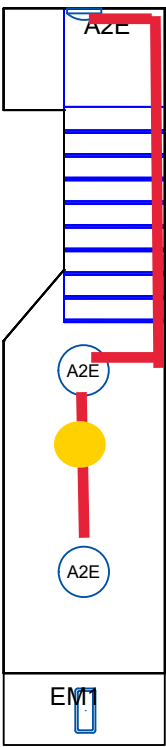
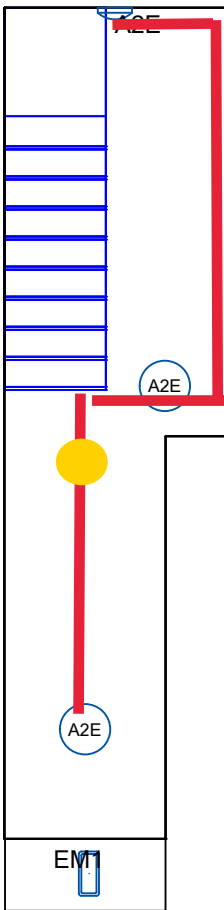


First/Second Stairwell



Ground Floor



Lower Ground



REV.	DATE	BY	DESCRIPTION

- Notes
- This drawing is for schematic purposes and installation shall fully comply with BS7671 (or National equivalent) and the LCM instructions supplied with the product.
  - It is the Installing contractors responsibility to set the LCM mode selection switches as indicated.
  - PIR positions are indicative only and are subject to quantity and location changes dependant upon room and furniture layouts.
  - The provided Lighting Design has been completed by others and Thorlux Lighting accept no design responsibility relating to this scheme.
  - In designing this initial scheme we have prejudged areas which are likely to require emergency lighting in compliance with BS5266-1, -7 & -8, according to a future employers risk assessment. Before a final emergency lighting scheme can be adopted it will be necessary to review this risk assessment, in addition to ensuring coverage of all "positions of emphasis" such as final locations for fire fighting equipment etc. Consequently our design/tender responsibility is limited pending these findings but we will gladly conclude once all the relevant facts have been determined.
  - 15% Data leads and 5% Mains leads have been added to quantities to allow for unforeseen obstructions within the ceiling void.
  - The Scanlight AT wiring shown on this drawing is a suggestion only and cable routes may be influenced by factors on site of which we are unaware. The quantity and location of Sub-circuit isolators will also depend upon the way the lighting is circuited, and so may change. Please contact us for further information once these factors have been established.

The proposed lighting scheme is subject to our terms and conditions which can be found here: <http://www.thorlux.com/terms>



Merse Road, North Moons Moat,  
Redditch, Worcestershire  
B98 9HH.  
Telephone 01527 583200  
Facsimile 01527 584177  
E-Mail [lighting.design@thorlux.co.uk](mailto:lighting.design@thorlux.co.uk)  
Web site: [www.thorlux.com](http://www.thorlux.com)

Camden Council  
Oak Court 3-6

SCALE	1:75 @ A1
DATE	17/02/2020
DRN. BY	C.J.E
DESIGNER	C.ELLIS

DRAWING No.

530977-00

BASED ON CUSTOMER DRG. ORIGINATOR:	REV. DATE
---------------------------------------	--------------

All BE and EM1 type fittings to be controlled by timeclock or photocell from intake cupboard

## A2E microwave sensors used in internal areas only


A2E

DE

EM1



Fire detector

REV.	DATE	BY	DESCRIPTION
Notes			
1.	This drawing is for schematic purposes and installation shall fully comply with BS7671 (or National equivalent) and the LCM instructions supplied with the product.		
2.	It is the Installing contractors responsibility to set the LCM mode selection switches as indicated.		
3.	PIR positions are indicative only and are subject to quantity and location changes dependant upon room and furniture layouts.		
4.	The provided Lighting Design has been completed by others and Thorlux Lighting accept no design responsibility relating to this scheme.		
5.	In designing this initial scheme we have prejudged areas which are likely to require emergency lighting in compliance with BSS266-1, -7 & -8, according to a future employers risk assessment. Before a final emergency lighting scheme can be adopted it will be necessary to review this risk assessment, in addition to ensuring coverage of all "positions of emphasis" such as final locations for fire fighting equipment etc. Consequently our design/tender responsibility is limited pending these findings but we will gladly conclude once all the relevant facts have been determined.		
6.	15% Data leads and 5% Mains leads have been added to quantities to allow for unforeseen obstructions within the ceiling void.		
7.	The Scanlight AT wiring shown on this drawing is a suggestion only and cable routes may be influenced by factors on site of which we are unaware. The quantity and location of Sub-circuit isolators will also depend upon the way the lighting is circuited, and so may change. Please contact us for further information once these factors have been established.		
<p><b>The proposed lighting scheme is subject to our terms and conditions which can be found here: <a href="http://www.thorlux.com/terms">http://www.thorlux.com/terms</a></b></p>			
 <p>Merse Road, North Moons Moat, Redditch, Worcestershire B98 9HH. Telephone 01527 583200 Facsimile 01527 584177 E-Mail <a href="mailto:lighting.design@thorlux.co.uk">lighting.design@thorlux.co.uk</a> Web site: <a href="http://www.thorlux.com">www.thorlux.com</a></p>			
Camden Council			
Oak Court 3-6			
KEY			
SCALE	1:75 @ A1		
DATE	17/02/2020		
DRN. BY	C.J.E		
DESIGNER	C.ELLIS		
DRAWING No.			
530977-KEY			
BASED ON CUSTOMER DRG.			REV.
ORIGINATOR:			DATE