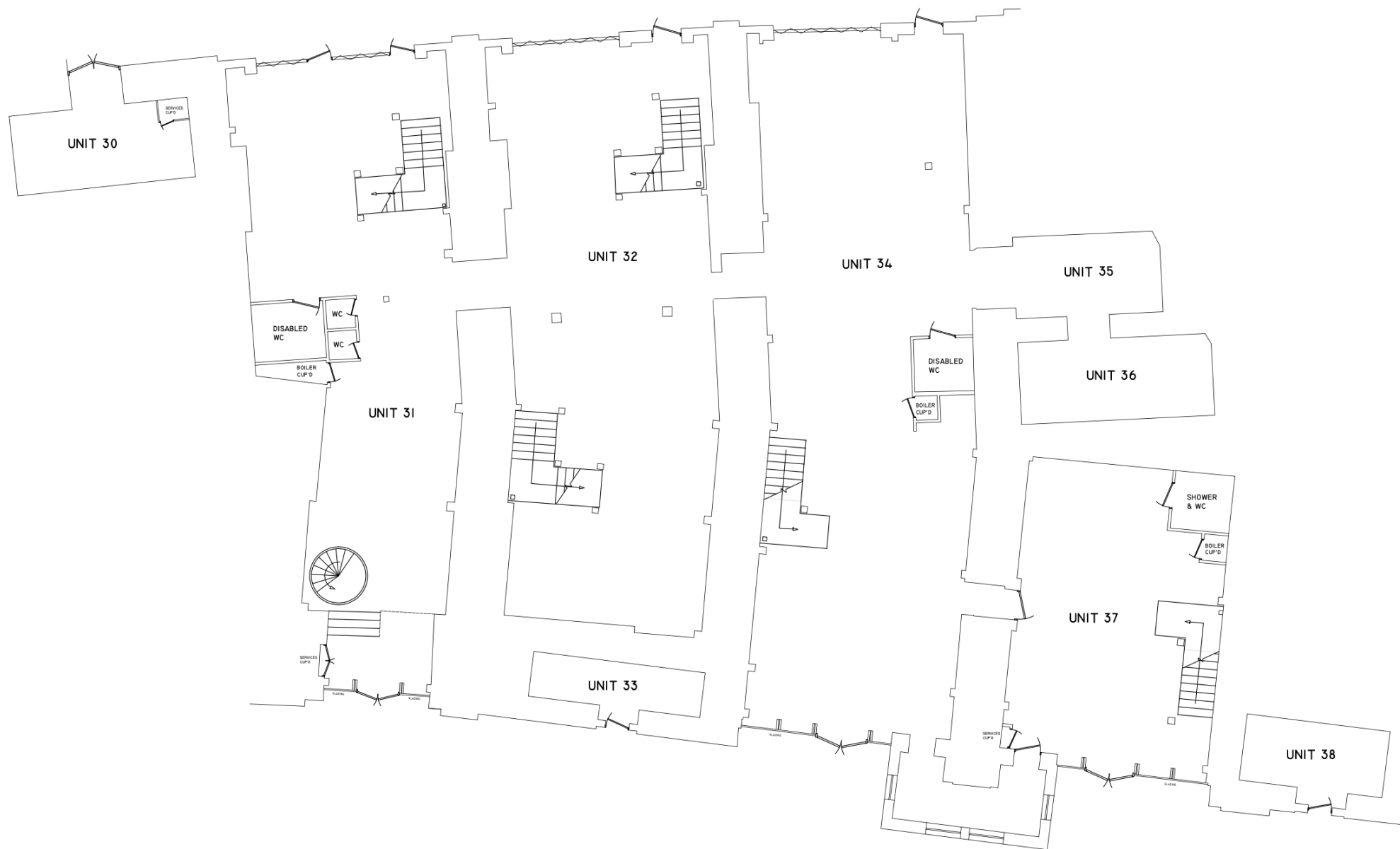


**NOTES**  
 THIS DRAWING IS THE PROPERTY OF PLAN MATTERS UK. COPYRIGHT IS RESERVED BY PLAN MATTERS UK AND THE DRAWING IS ISSUED ON THE CONDITION THAT IT IS NOT COPIED, REPRODUCED, RETAINED OR DISCLOSED TO ANY UNAUTHORIZED PERSON WITHOUT WRITTEN CONSENT OF PLAN MATTERS UK.

- Proposal: change of use from Sui Generis to Class E/B8.
- All existing floorspace (i.e. units 30-38) is Sui Generis (relating to the previous occupier, a furniture producer).



All existing floorspace is Sui Generis

CLIENT  
 THE ARCH COMPANY

PROJECT TITLE  
 30-38 PROWSE PLACE,  
 CAMDEN, NW1 9PH

DRAWING TITLE  
 GROUND FLOOR EXISTING USE

ORG NO.	REV	SCALE
266779	A1	1:100

DATE	DRAWN	CHECKED	SHEET SIZE
23/10/20	JC	MG	A2

DRAWN BY:

**NOTES**  
 THIS DRAWING IS THE PROPERTY OF PLAN MATTERS UK. COPYRIGHT IS RESERVED BY PLAN MATTERS UK AND THE DRAWING IS ISSUED ON THE CONDITION THAT IT IS NOT COPIED, REPRODUCED, RETAINED OR DISCLOSED TO ANY UNAUTHORISED PERSON WITHOUT WRITTEN CONSENT OF PLAN MATTERS UK.

- Proposal: change of use from Sui Generis to Class E/B8.
- All existing floorspace (i.e. units 30-38) is Sui Generis (relating to the previous occupier, a furniture producer).



Class E /B8. (All floorspace is proposed to be flexible Class E /B8 with no subdivisions)

CLIENT  
 THE ARCH COMPANY

PROJECT TITLE  
 30-38 PROWSE PLACE,  
 CAMDEN, NW1 9PH

DRAWING TITLE  
 GROUND FLOOR PROPOSED USE

DRG NO	REV	AI	SCALE
266779		AI	1:100
DATE	DRAWN	CHECKED	SHEET SIZE
23/10/20	JC	MG	A2

DRAWN BY:



All existing floorspace is Sui Generis

**NOTES**  
 THIS DRAWING IS THE PROPERTY OF PLAN MATTERS UK. COPYRIGHT IS RESERVED BY PLAN MATTERS UK AND THE DRAWING IS ISSUED ON THE CONDITION THAT IT IS NOT COPIED, REPRODUCED, RETAINED OR DISCLOSED TO ANY UNAUTHORIZED PERSON WITHOUT WRITTEN CONSENT OF PLAN MATTERS UK.

- Proposal: change of use from Sui Generis to Class E/B8.
- All existing floorspace (i.e. units 30-38) is Sui Generis (relating to the previous occupier, a furniture producer).

CLIENT  
 THE ARCH COMPANY

PROJECT TITLE  
 30-38 PROWSE PLACE,  
 CAMDEN, NW1 9PH

DRAWING TITLE  
 FIRST FLOOR EXISTING USE

DRG NO.	REV.	AI	SCALE
266779			1:100
DATE	DRAWN	CHECKED	SHEET SIZE
23/10/20	JC	MG	A2

DRAWN BY:  
[www.energymattersuk.com](http://www.energymattersuk.com)

**NOTES**  
 THIS DRAWING IS THE PROPERTY OF PLAN MATTERS UK. COPYRIGHT IS RESERVED BY PLAN MATTERS UK, AND THE DRAWING IS ISSUED ON THE CONDITION THAT IT IS NOT COPIED, REPRODUCED, RETAINED OR DISCLOSED TO ANY UNAUTHORISED PERSON WITHOUT WRITTEN CONSENT OF PLAN MATTERS UK.

- Proposal: change of use from Sui Generis to Class E/B8.
- All existing floorspace (i.e. units 30-38) is Sui Generis (relating to the previous occupier, a furniture producer).



Class E /B8. (All floorspace is proposed to be flexible Class E /B8 with no subdivisions)

CLIENT  
 THE ARCH COMPANY  
 PROJECT TITLE  
 30-38 PROWSE PLACE,  
 CAMDEN, NW1 9PH

DRAWING TITLE  
 FIRST FLOOR PROPOSED USE

ORG NO	REV	AI	SCALE
266779			1:100
DATE	DRAWN	CHECKED	SHEET SIZE
23/10/20	JC	MG	A2

DRAWN BY  
 planmatters<sup>uk</sup>  
 www.energymattersuk.com