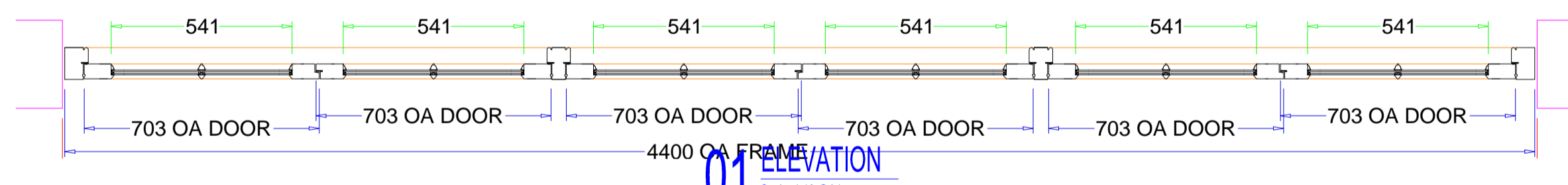
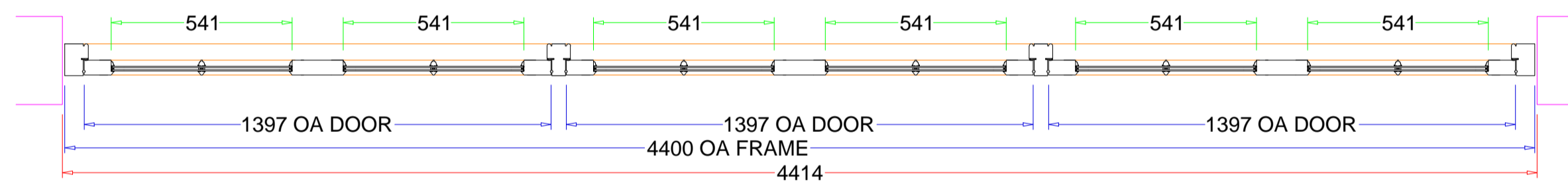
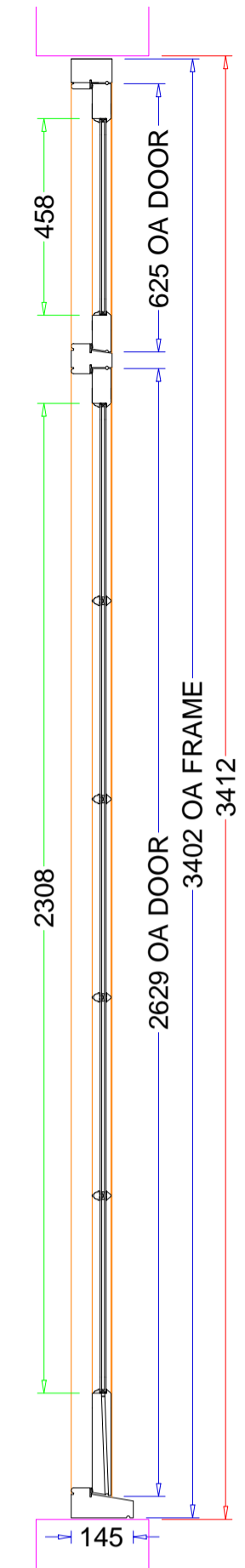
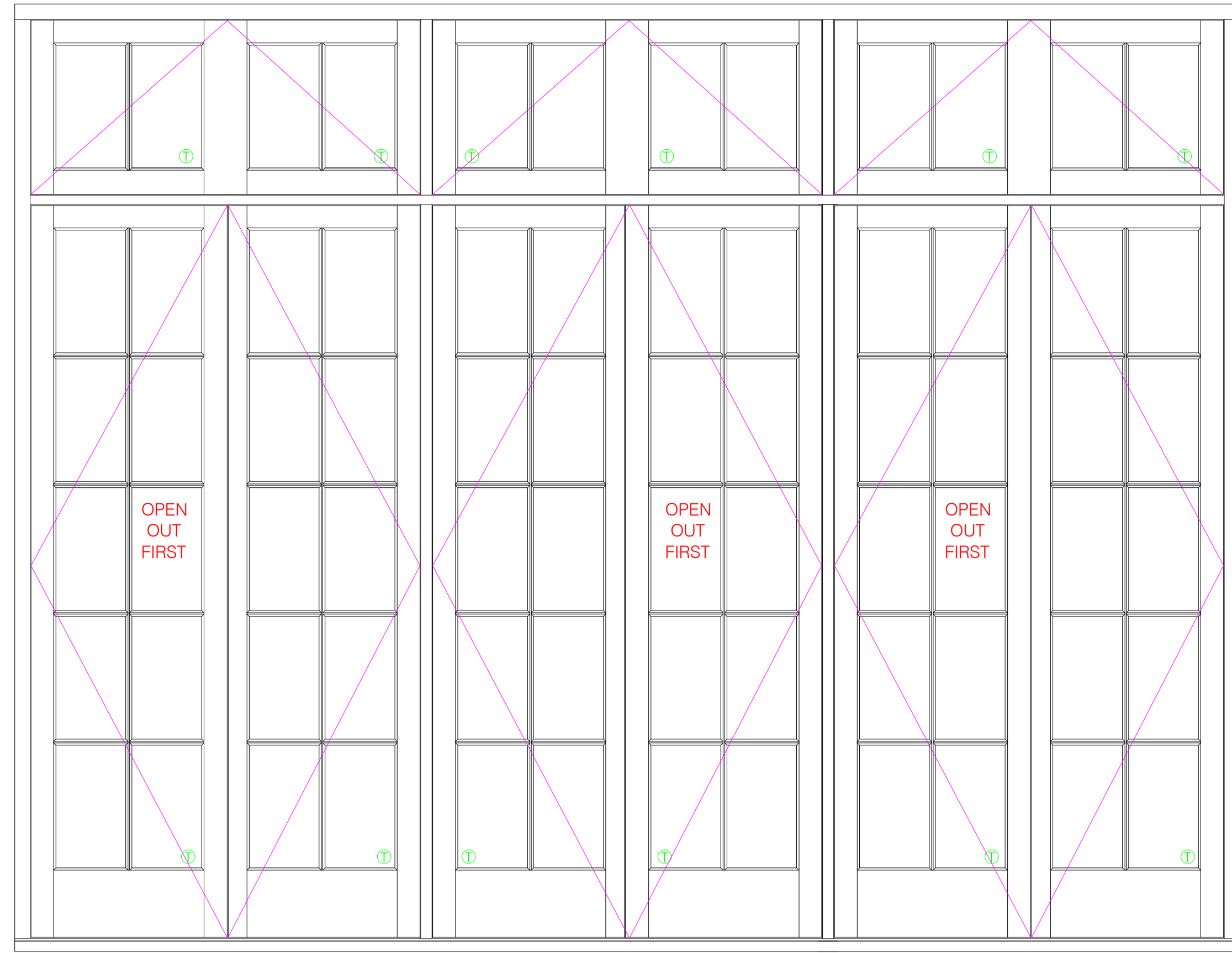
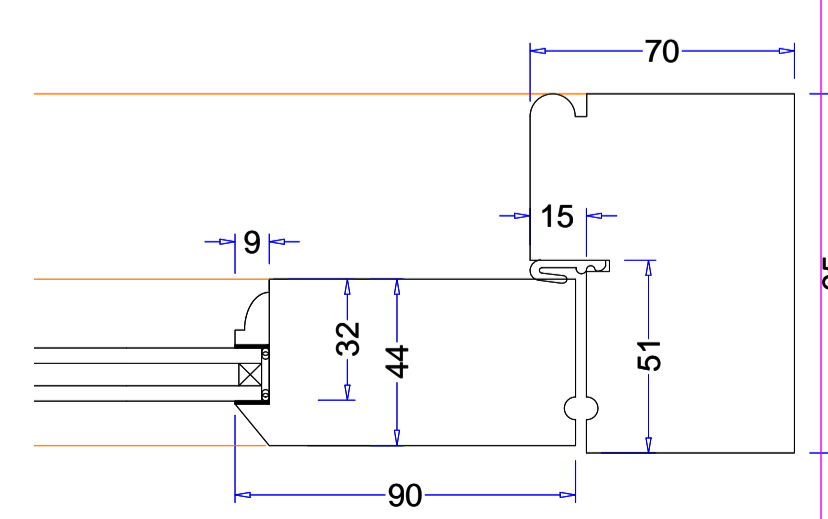
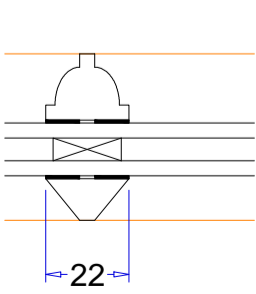
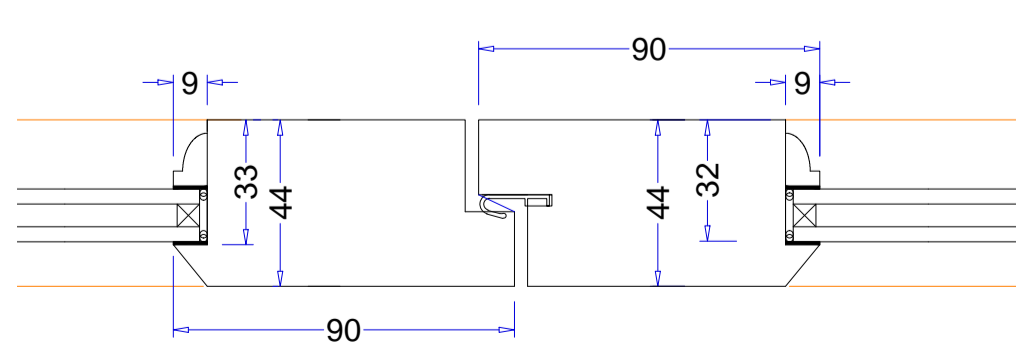
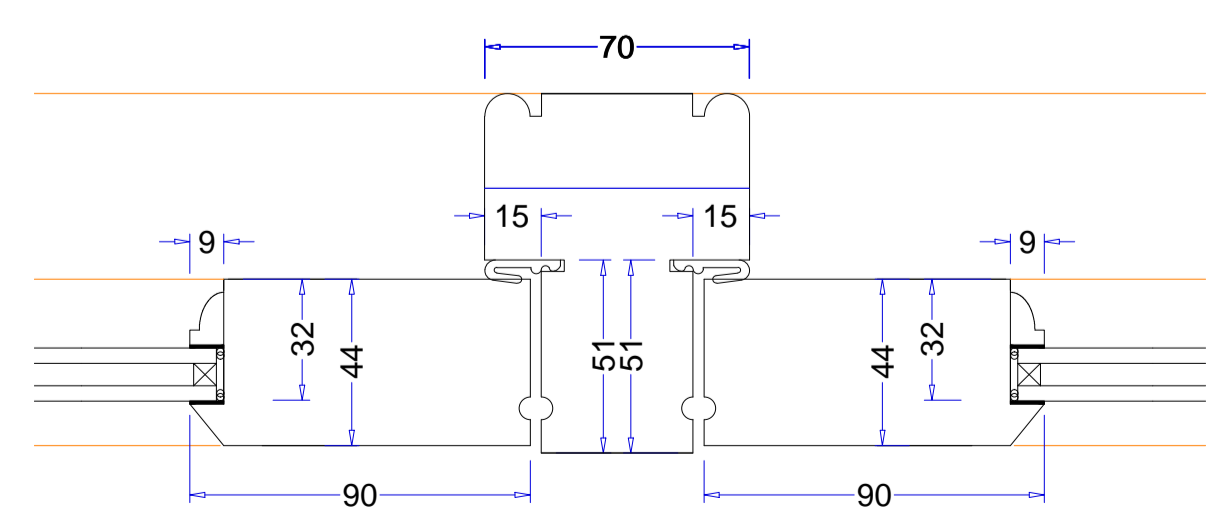
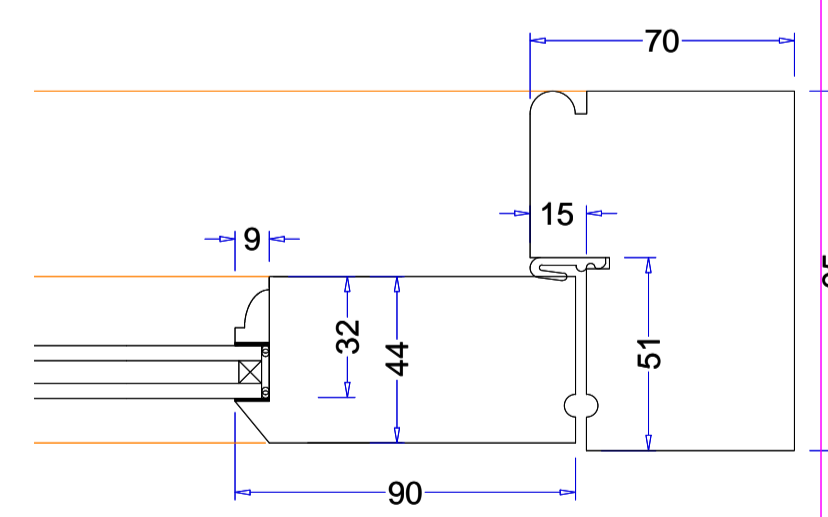
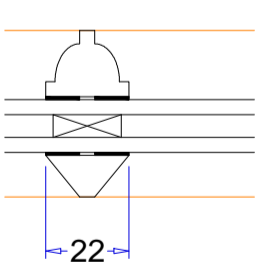
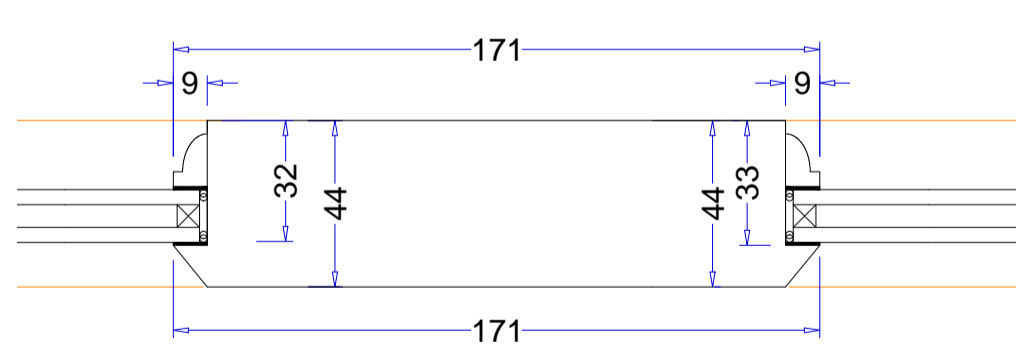
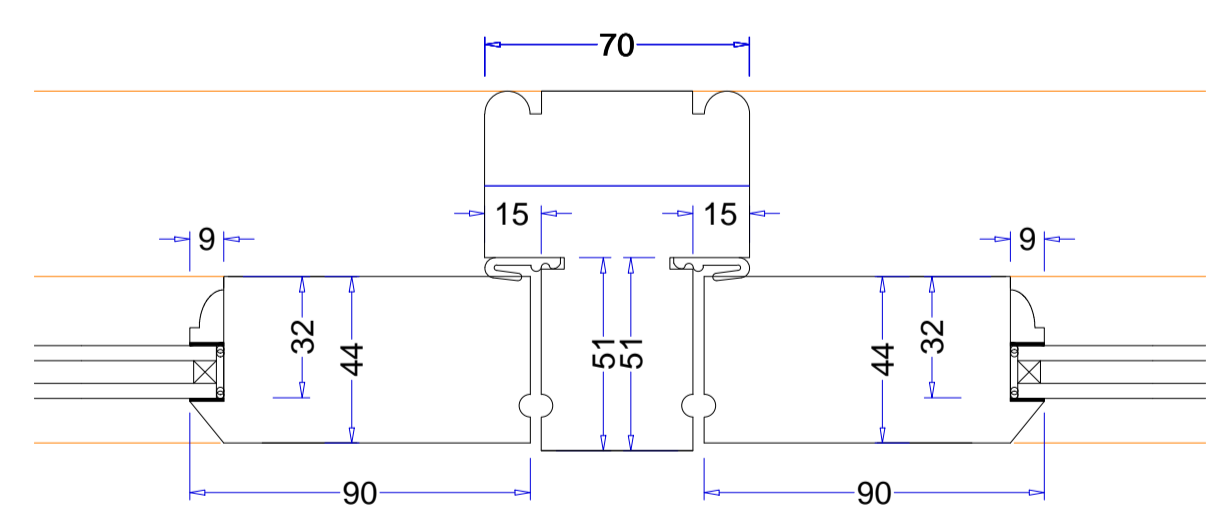


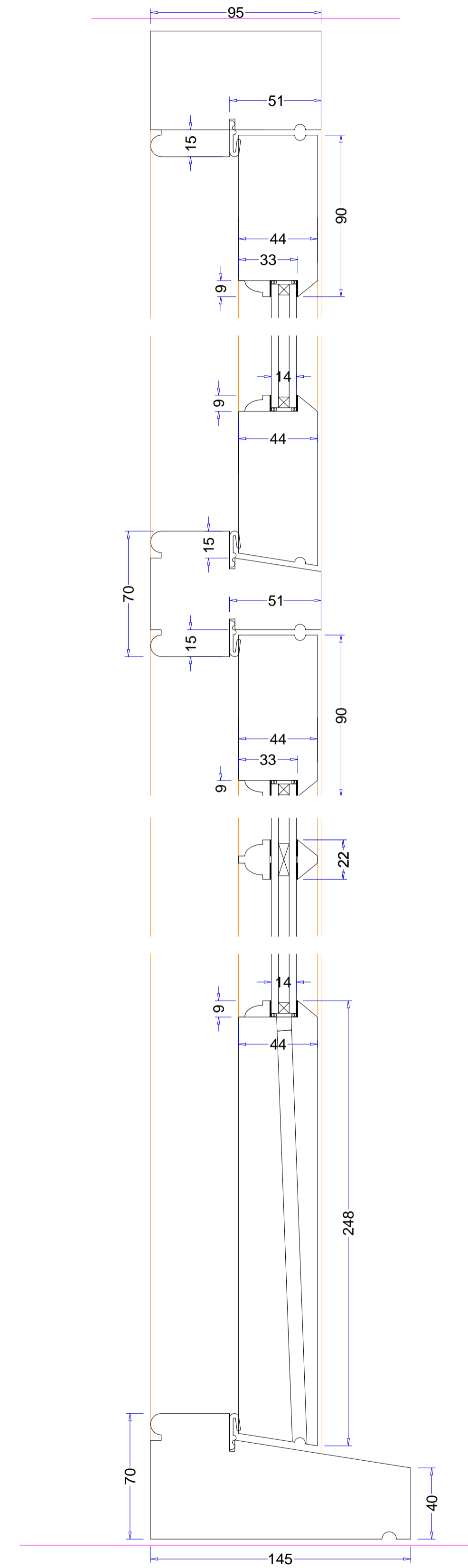
LGD09



01 ELEVATION  
Scale: 1:10 @A1



02 PLAN SECTION DETAILS  
Scale: 1:2 @A1



03 HEIGHT SECTION DETAILS  
Scale: 1:2 @A1

SPECIFICATIONS

- TO SUPPLY FRENCH WINDOW.
- ALL TO BE MANUFACTURED OUT OF HARDWOOD.
- DOUBLE GLAZED WITH 4MM OPTIWHITE (OUTER PANE) / 6MM KRYPTON FILL / 4MM PILKINGTON K GLASS™ S TOUGHENED
- SPACER BAR COLOURS = WHITE / BLACK / MID GREY
- STICK ON GLAZING BARS.
- TO FIT "FREE ISSUE" HINGES – ALL OTHER IRONMONGERY SUPPLIED AND FITTED ON SITE BY OTHERS.
- PRIMED ONLY WHITE OR GREY (FOR DARK FINISHED COLOUR) TBC

DATE	REVISION NOTES
10.03.21	REV 01:

- NOTES ON DRAWINGS**
- ALL DRAWINGS ARE FROM AN EXTERNAL POINT OF VIEW UNLESS OTHERWISE STATED.
  - THIS DRAWING IS SOLELY PREPARED FOR THE USE OF K&D JOINERY IN PREPARATION OF THEIR WORK AND MUST NOT BE USED FOR ANY OTHER PURPOSE.
  - DOUBLE DOORS AND CASEMENTS WITHOUT A VERTICAL TRANSOM WILL ALLOW A TINY AMOUNT OF LIGHT LEAKAGE AT THE TOP AND BOTTOM OF THE DOORS/SASHES.
  - CHECK THERE IS SUFFICIENT ACCESS THROUGH/AROUND THE BUILDING SUITABLE FOR THE SIZE OF JOINERY INDICATED ON THIS DRAWING.
- NOTES ON SIZES**
- WE CANNOT GUARANTEE THE STABILITY OF ANY DOOR OVER 200mm.
  - WOOD IS A NATURAL PRODUCT THAT RESPONDS TO TEMPERATURE AND HUMIDITY VARIATIONS BY EXPANDING AND CONTRACTING. MOVEMENT SHOULD BE EXPECTED DURING THE DIFFERENT SEASONS THROUGHOUT THE YEAR. K&D JOINERY CANNOT BE HELD RESPONSIBLE FOR NATURAL MOVEMENT IN TIMBER AND ANY FUTURE ADJUSTMENTS FOLLOWING DELIVERY/INSTALLATION OF PRODUCTS WILL BE CHARGED FOR IF YOU REQUIRE A COMPLETELY STABLE PRODUCT WITH NO MOVEMENT WE HIGHLY SUGGEST USING ACCOYA TIMBER.
- NOTES ON FINISHING**
- K&D JOINERY DO NOT RECOMMEND FINISHING EXTERNAL JOINERY IN BLACK OR A SIMILAR DARK COLOUR AND CANNOT OFFER ANY GUARANTEES DUE TO THE TIMBER BECOMING MORE SUSCEPTIBLE TO MOVEMENT, TWISTING, WARPING, CRACKING DUE TO THE DARKER COLOUR ABSORBING MORE HEAT.
  - ALL JOINERY WILL BE PRIMED WHITE UNLESS OTHERWISE SPECIFIED.
  - COLOUR VARIATION CAN BE EXPECTED WHEN USING CLEARSTAINED FINISHES, ESPECIALLY WHEN THE JOINERY IS MADE OUT OF BIRCH AND OAK.
  - ALL CLEAR FINISHED EXTERIOR JOINERY SHOULD BE TREATED ON A YEARLY BASIS, FOLLOWING PROFESSIONAL GUIDELINES.
  - ANY INTERNAL MOULDINGS ARCHTRAVES OR WINDOW BOARDS ARE PRIMED ONLY.
- NOTES ON VENTILATION**
- PLEASE NOTE, TRICKLE VENTS WILL NOT BE FITTED TO JOINERY UNLESS SPECIFIED BY THE CLIENT. WE CANNOT DETERMINE THE VENTILATION REQUIREMENTS.
- NOTES FOR WORKSHOP**
- END GRAIN SEALER TO BE USED ON ALL EXPOSED END GRAIN, INCLUDING THE ENDS OF BEADING.
- NOTES ON MOISTURE CONTENT**
- THE MOISTURE CONTENT OF THE TIMBER TO BE USED WILL BE 16% ± 3 (EXTERNAL).
  - THE MOISTURE CONTENT OF THE TIMBER TO BE USED WILL BE 10% ± 2 (INTERNAL).
- NOTES FOR SITE CARE AFTER DELIVERY**
- APPROVAL OF THIS DRAWING CONFIRMS THAT YOU WILL REVIEW AND ADHERE TO THE SITE CARE INFORMATION SHEET ATTACHED WITH THIS DRAWING.

- KEY:
- = SURVEY SIZES
  - = REBATE SIZES
  - = JOINERY SIZES
  - = DATUM SIZES

READ IN CONJUNCTION WITH THE FOLLOWING DRAWINGS  
XXXX-XXX to XXXX-XXX INCL.  
ANY ARCHITECTS DRAWING  
XXXXXXXXXXXXXXXXXX

ISSUED FOR APPROVAL



Joinery House 69 Chequers Lane - Dagenham RM9 6JQ  
Tel: 020 8526 7020 Fax: 020 8526 7031  
Website: www.kandd.org E-mail: info@kandd.org

CLIENT: M H Costa  
PROJECT: 58A REDDINGTON ROAD  
Post code  
DESCRIPTION: Description  
JOB No: N/A  
SCALE: SEE DRAWING @ A1  
DWG No: 20780F  
REV: 01  
DWG BY: ZK  
DATE: 03/05/21