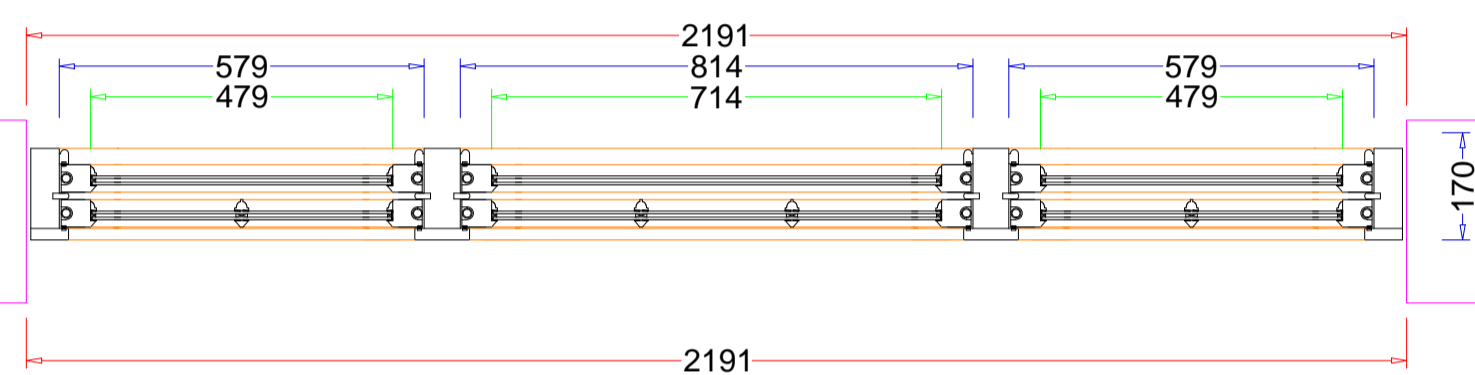
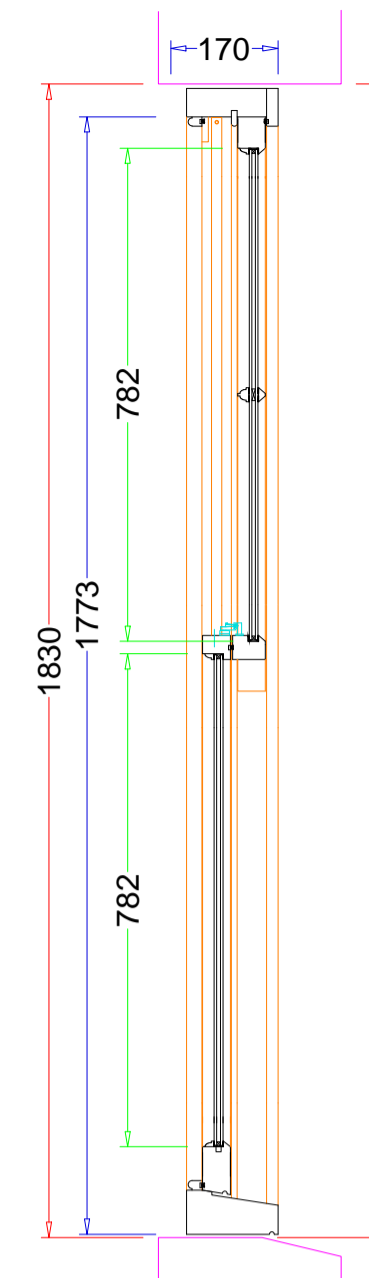
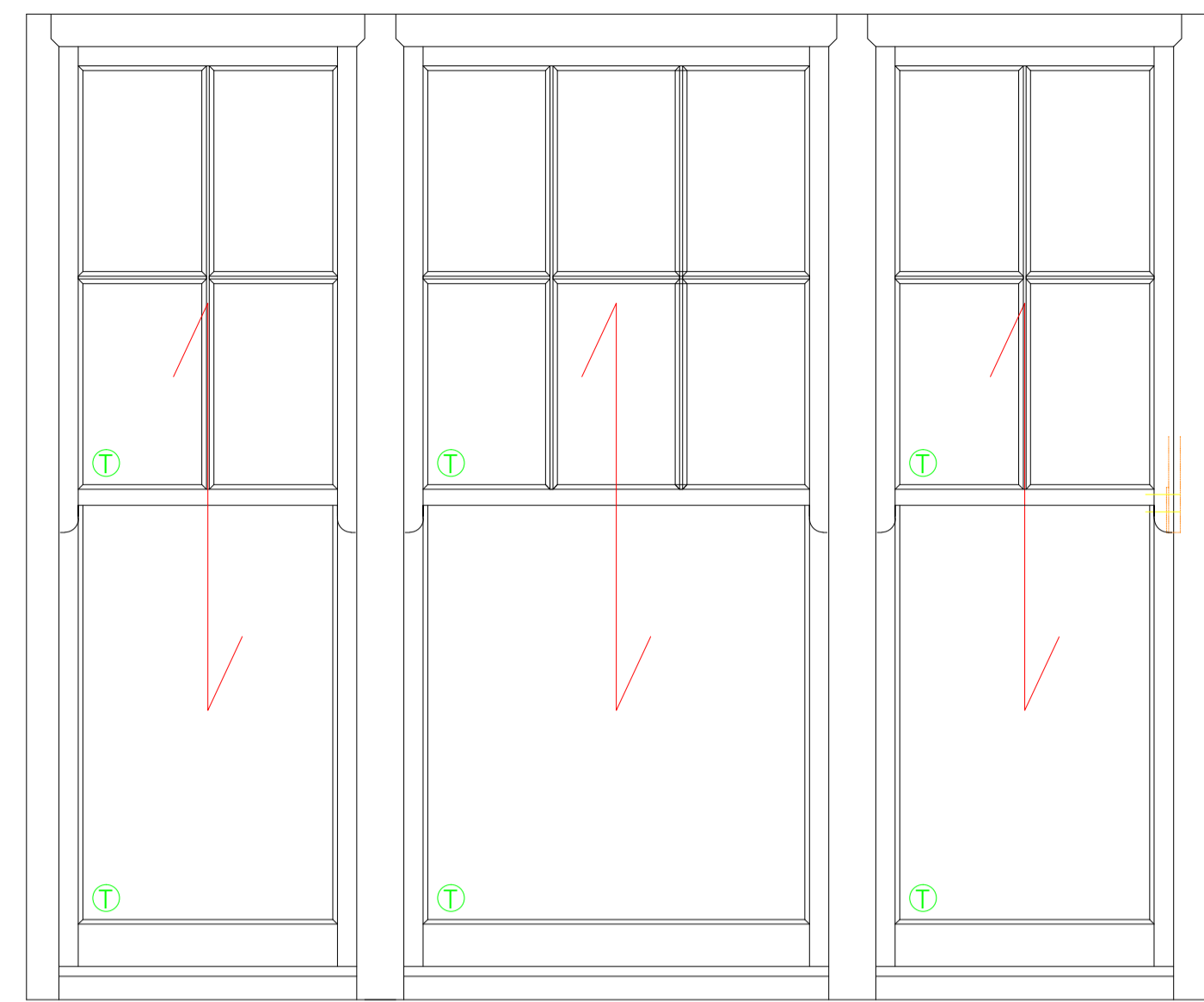
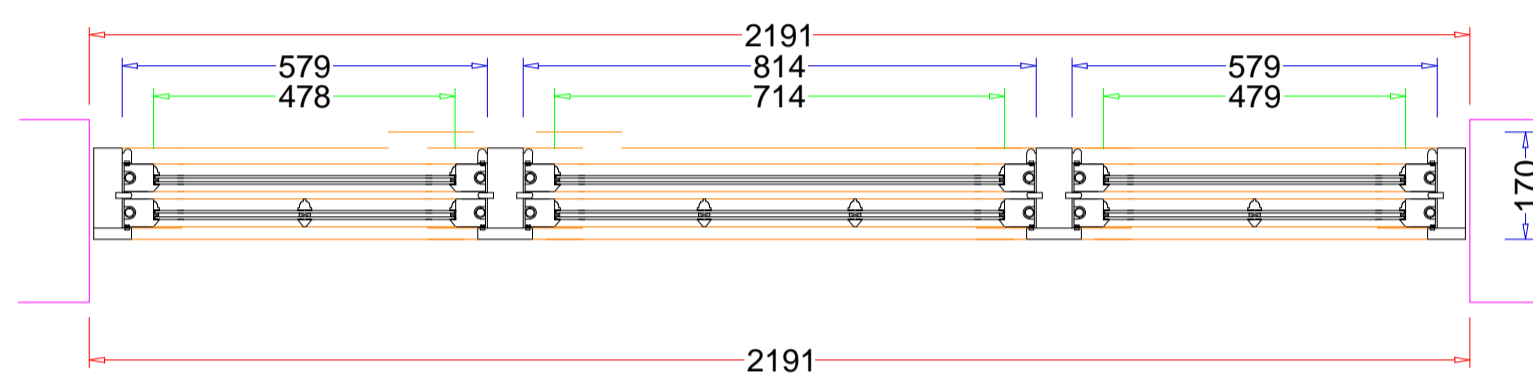
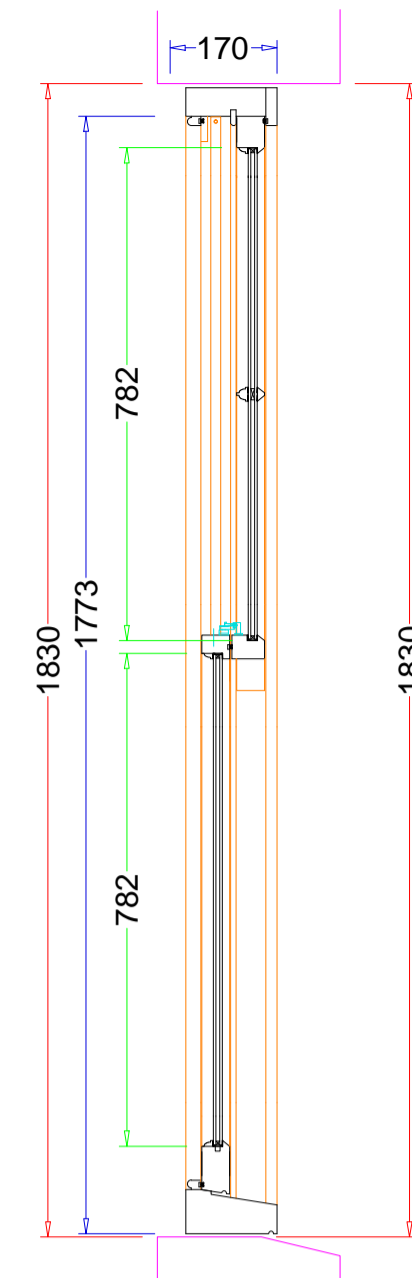
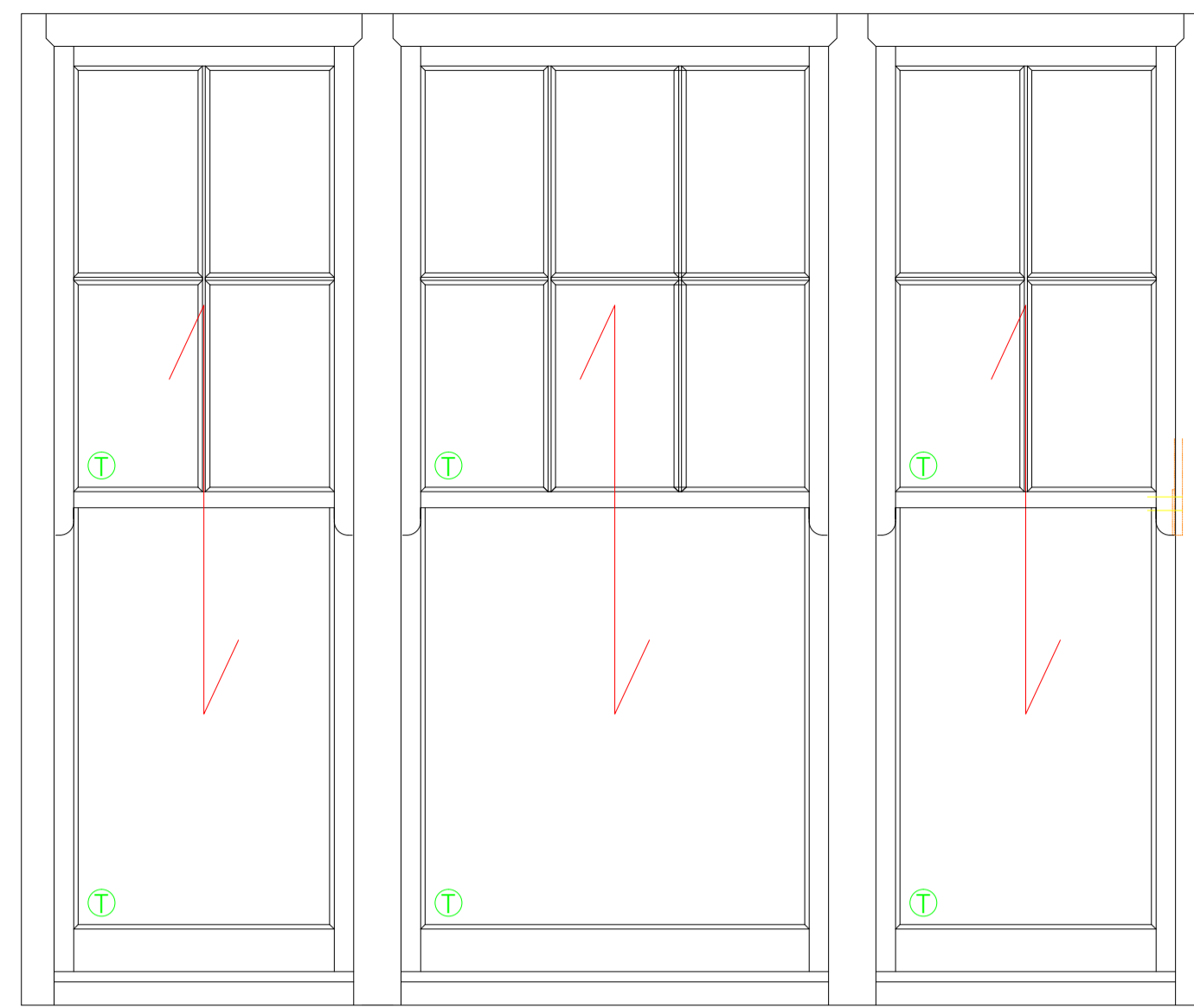


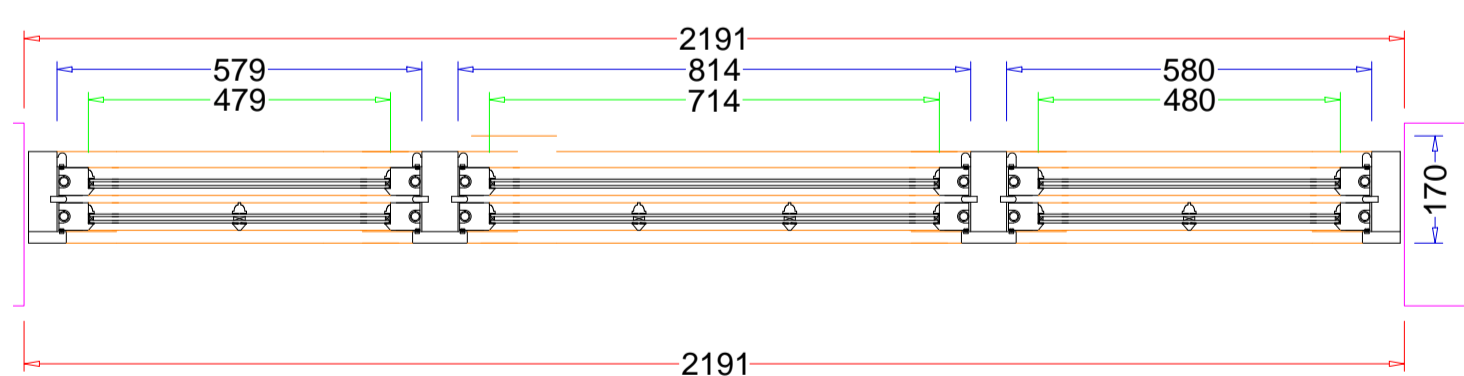
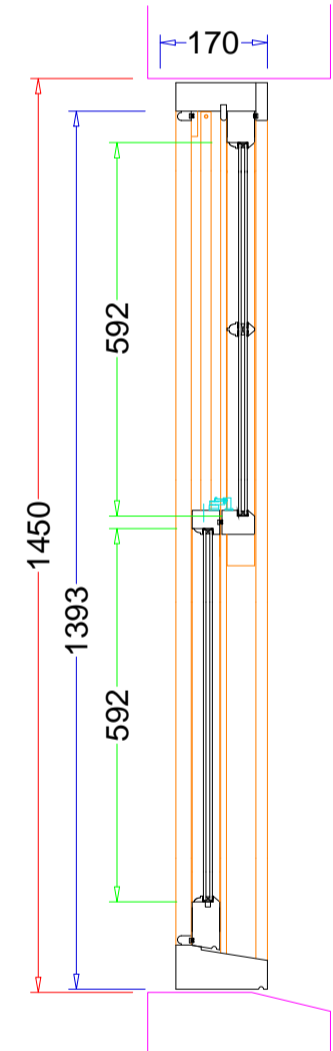
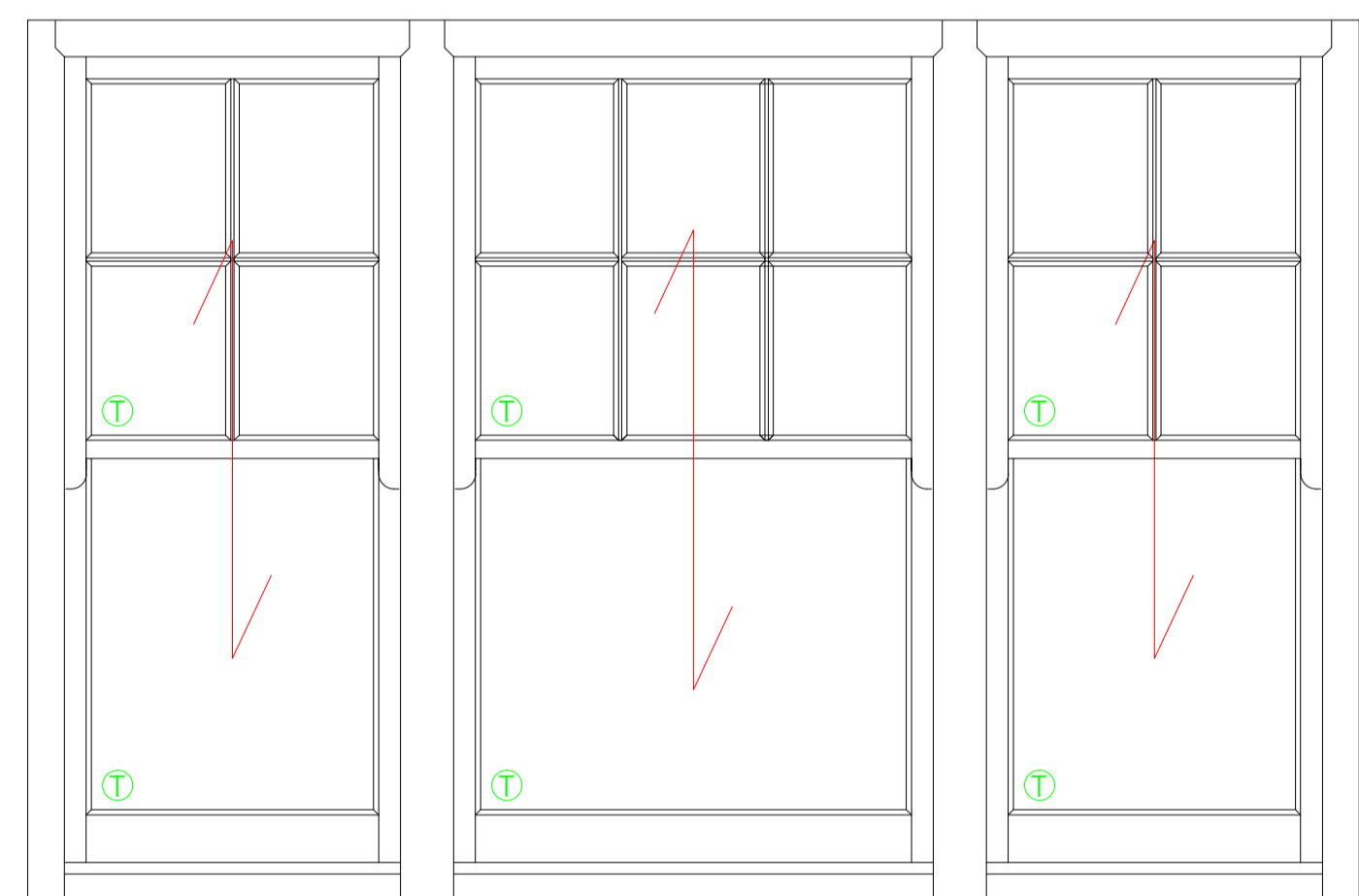
LGW01



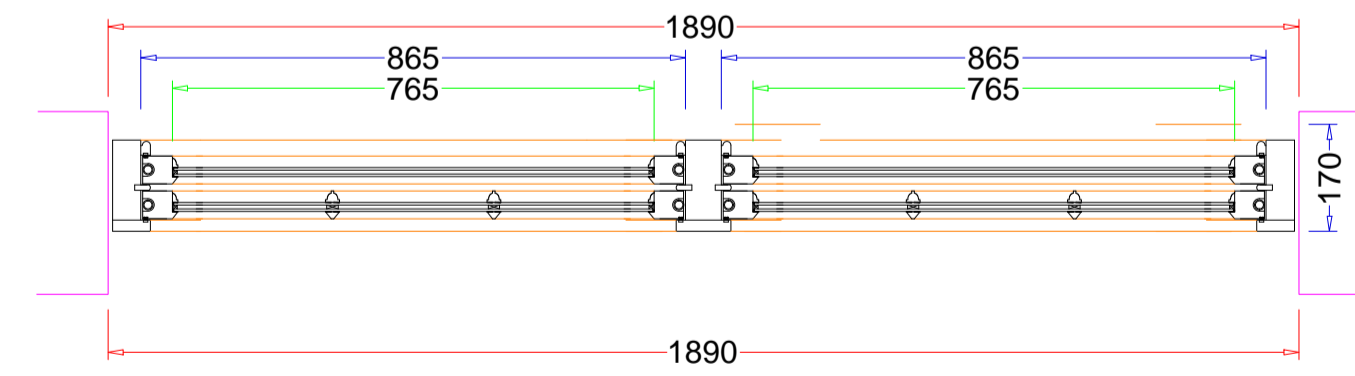
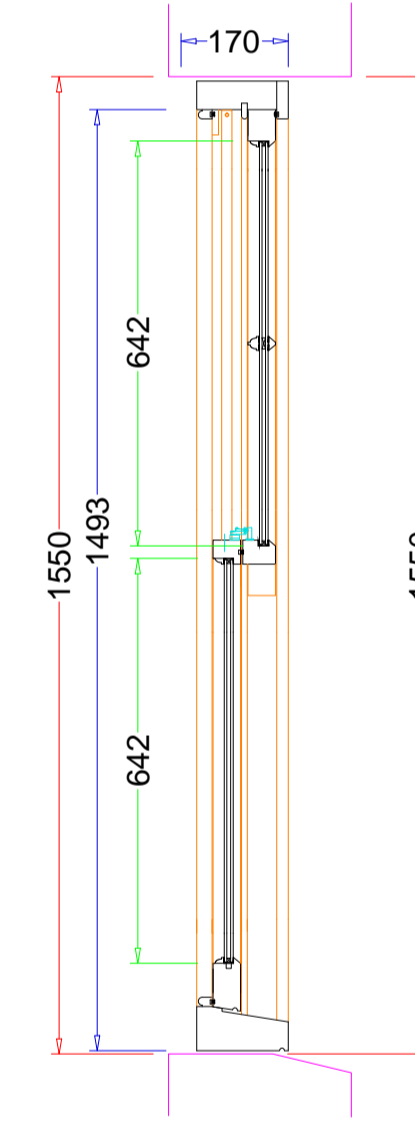
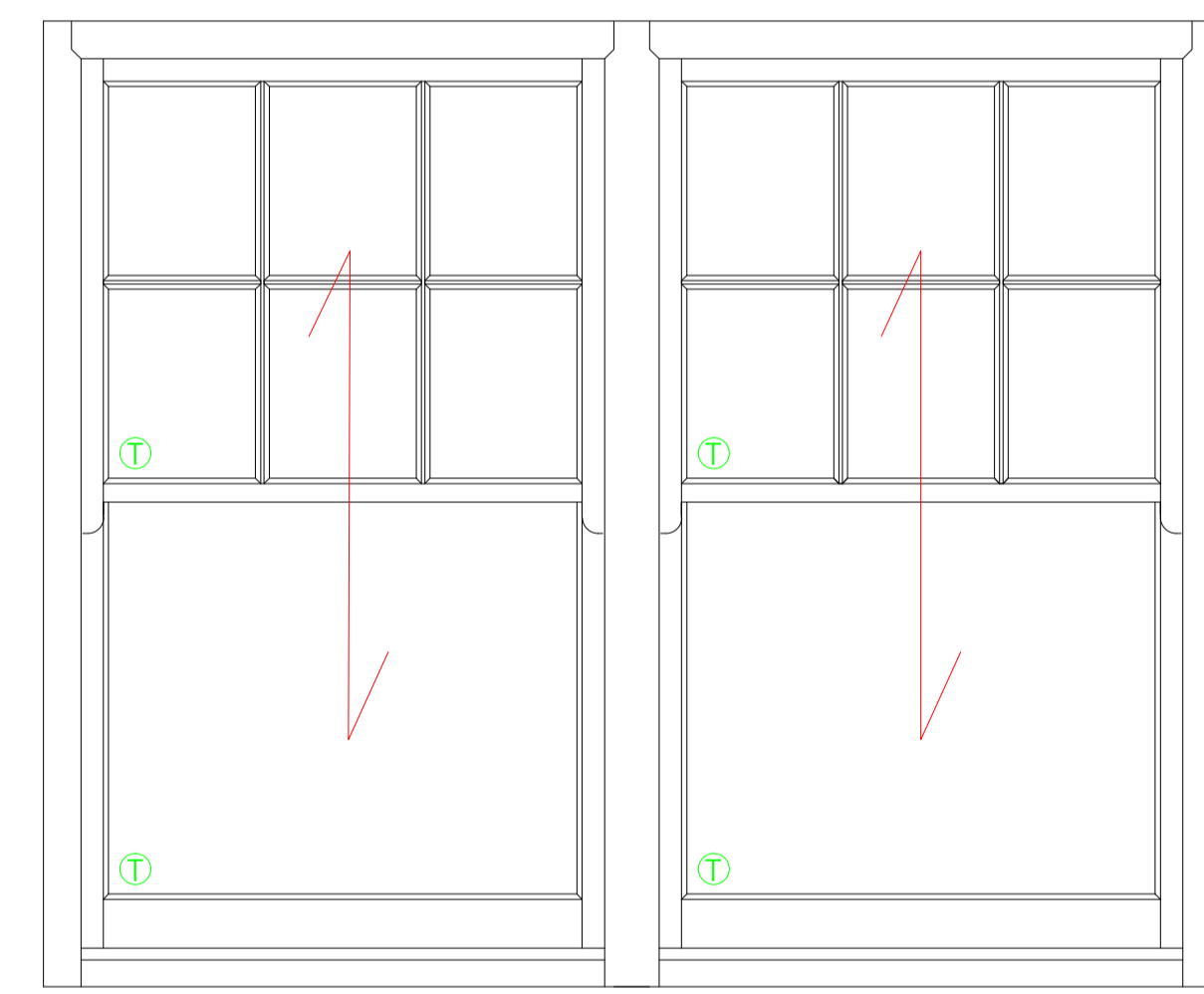
UGW01



1W02



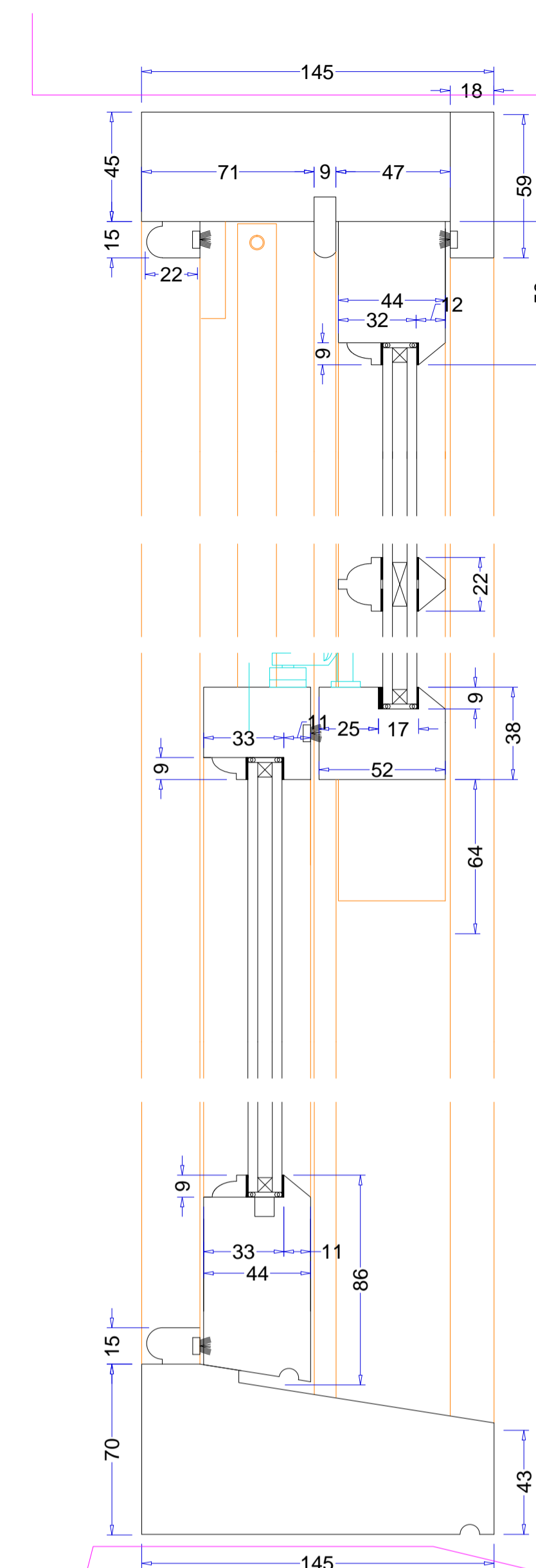
2W03-04



01 ELEVATION Scale: 1:10 @A1

IRONMONGERY DRAWN AS INDICATIVE ONLY

02 PLAN SECTION DETAILS Scale: 1:2 @A1



03 HEIGHT SECTION DETAILS Scale: 1:2 @A1

SPECIFICATIONS

- TO SUPPLY ONLY SPIRAL BALANCE SASH WINDOW
- MATERIALS: ALL MADE OUT OF HARDWOOD.
- DOUBLE GLAZED WITH 4MM OPTIWHITE (OUTER PANE) / 6MM KRYPTON FILL / 4MM PILKINGTON K GLASS™ S TOUGHENED
- SPACER BAR COLOURS = WHITE / BLACK / MID GREY
- STICK ON GLAZING BARS.
- IRONMONGERY:
- SASHES OPERATED ON SPIRAL SPRING SUPPLIED AND FITTED BY K&D
- ALLOWANCE HAS BEEN MADE TO DRILL HOLES FOR "FREE ISSUE" RESTRICTORS, SAMPLE REQUIRED ON DRAWING APPROVAL.
- PRIMED ONLY WHITE OR GREY (FOR DARK FINISHED COLOUR) TBC

DATE	REVISION NOTES
10.03.21	REV 01:

- NOTES ON DRAWINGS
- ALL DRAWINGS ARE FROM AN EXTERNAL POINT OF VIEW UNLESS OTHERWISE STATED
 - THIS DRAWING IS SOLELY PREPARED FOR THE USE OF K&D JOINERY IN PREPARATION OF THEIR WORK AND MUST NOT BE USED FOR ANY OTHER PURPOSE
 - DOUBLE DOORS AND CASEMENTS WITHOUT A VERTICAL TRANSOM WILL ALLOW A TINY AMOUNT OF LIGHT LEAKAGE AT THE TOP AND BOTTOM OF THE DOORS/SASHES
 - CHECK THERE IS SUFFICIENT ACCESS THROUGH AROUND THE BUILDING SUITABLE FOR THE SIZE OF JOINERY INDICATED ON THIS DRAWING.
- NOTES ON SIZES
- WE CANNOT GUARANTEE THE STABILITY OF ANY DOOR OVER 200mm
 - WOOD IS A NATURAL PRODUCT THAT RESPONDS TO TEMPERATURE AND HUMIDITY VARIATIONS BY EXPANDING AND CONTRACTING. MOVEMENT SHOULD BE EXPECTED DURING THE DIFFERENT SEASONS THROUGHOUT THE YEAR. K&D JOINERY CANNOT BE HELD RESPONSIBLE FOR NATURAL MOVEMENT IN TIMBER AND ANY FUTURE ADJUSTMENTS FOLLOWING DELIVERY/INSTALLATION OF PRODUCTS WILL BE CHARGED FOR IF YOU REQUIRE A COMPLETELY STABLE PRODUCT WITH NO MOVEMENT WE HIGHLY SUGGEST USING ACCOYA TIMBER
- NOTES ON FINISHING
- K&D JOINERY DO NOT RECOMMEND FINISHING EXTERNAL JOINERY IN BLACK OR A SIMILAR DARK COLOUR AND CANNOT OFFER ANY GUARANTEES DUE TO THE TIMBER BECOMING MORE SUSCEPTIBLE TO MOVEMENT, TWISTING, WARPING, CRACKING DUE TO THE DARKER COLOUR ABSORBING MORE HEAT
 - ALL JOINERY WILL BE PRIMED WHITE UNLESS OTHERWISE SPECIFIED
 - COLOUR VARIATION CAN BE EXPECTED WHEN USING CLEARSTAINED FINISHES, ESPECIALLY WHEN THE JOINERY IS MADE OUT OF BIRCH AND OAK
 - ALL CLEAR FINISHED EXTERIOR JOINERY SHOULD BE TREATED ON A YEARLY BASIS FOLLOWING PROFESSIONAL GUIDELINES
 - ANY INTERNAL MOUNDINGS ARCHTRAVES OR WINDOW BOARDS ARE PRIMED ONLY
- NOTES ON VENTILATION
- PLEASE NOTE, TRIBLE VENTS WILL NOT BE FITTED TO JOINERY UNLESS SPECIFIED BY THE CLIENT. WE CANNOT DETERMINE THE VENTILATION REQUIREMENTS.
- NOTES FOR WORKSHOP
- END GRAIN SEALER TO BE USED ON ALL EXPOSED END GRAIN, INCLUDING THE ENDS OF BEADING.
- NOTES ON MOISTURE CONTENT
- THE MOISTURE CONTENT OF THE TIMBER TO BE USED WILL BE 16% ± 3 (EXTERNAL)
 - THE MOISTURE CONTENT OF THE TIMBER TO BE USED WILL BE 10% ± 2 (INTERNAL)
- NOTES FOR SITE CARE AFTER DELIVERY
- APPROVAL OF THIS DRAWING CONFIRMS THAT YOU WILL REVIEW AND ADHERE TO THE SITE CARE INFORMATION SHEET ATTACHED WITH THIS DRAWING.

- KEY:
- = SURVEY SIZES
 - = REBATE SIZES
 - = JOINERY SIZES
 - = DATUM SIZES

READ IN CONJUNCTION WITH THE FOLLOWING DRAWINGS
 XXXX-XXX to XXXX-XXX INCL.
 ANY ARCHITECTS DRAWING
 XXXXXXXXXXXXXXXX

ISSUED FOR APPROVAL



Joinery House: 69 Chequers Lane - Dagenham RM9 6QJ
 Tel: 020 8526 7020 Fax: 020 8526 7031
 Website: www.kandd.org E-mail: info@kandd.org

CLIENT: M H Costa
 PROJECT: 58A REDDINGTON ROAD
 Post code
 DESCRIPTION: Description
 JOB N6: N/A
 SCALE: SEE DRAWING @ A1
 DWG N6: 20780B
 REV: 02
 DWG BY: ZK
 DATE: 03/05/21