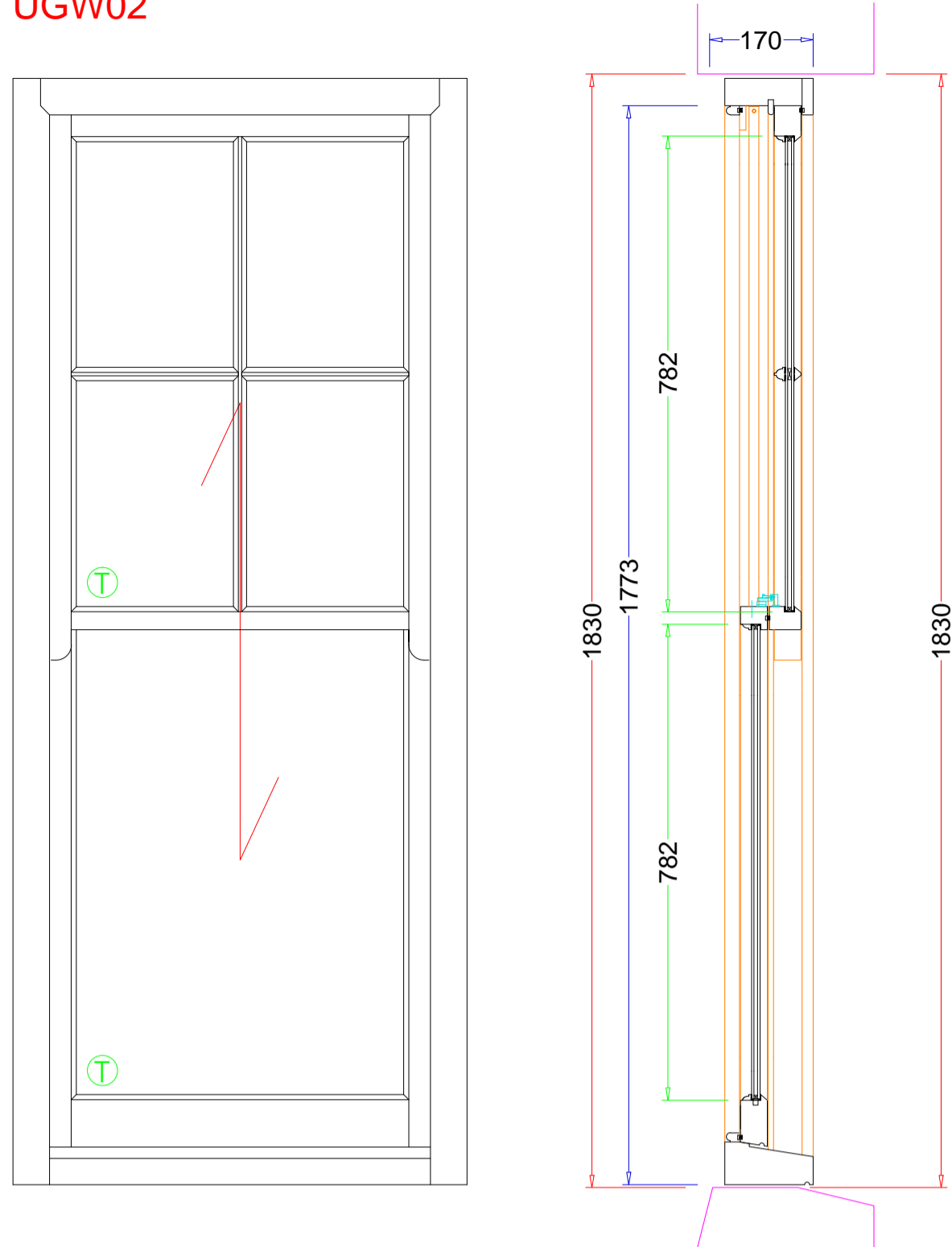
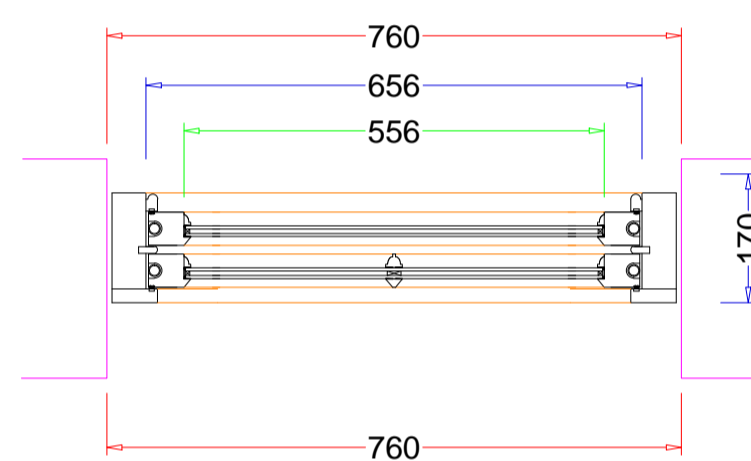
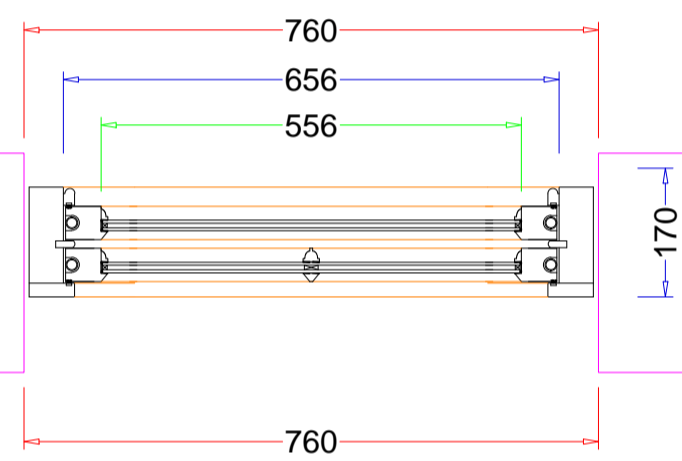
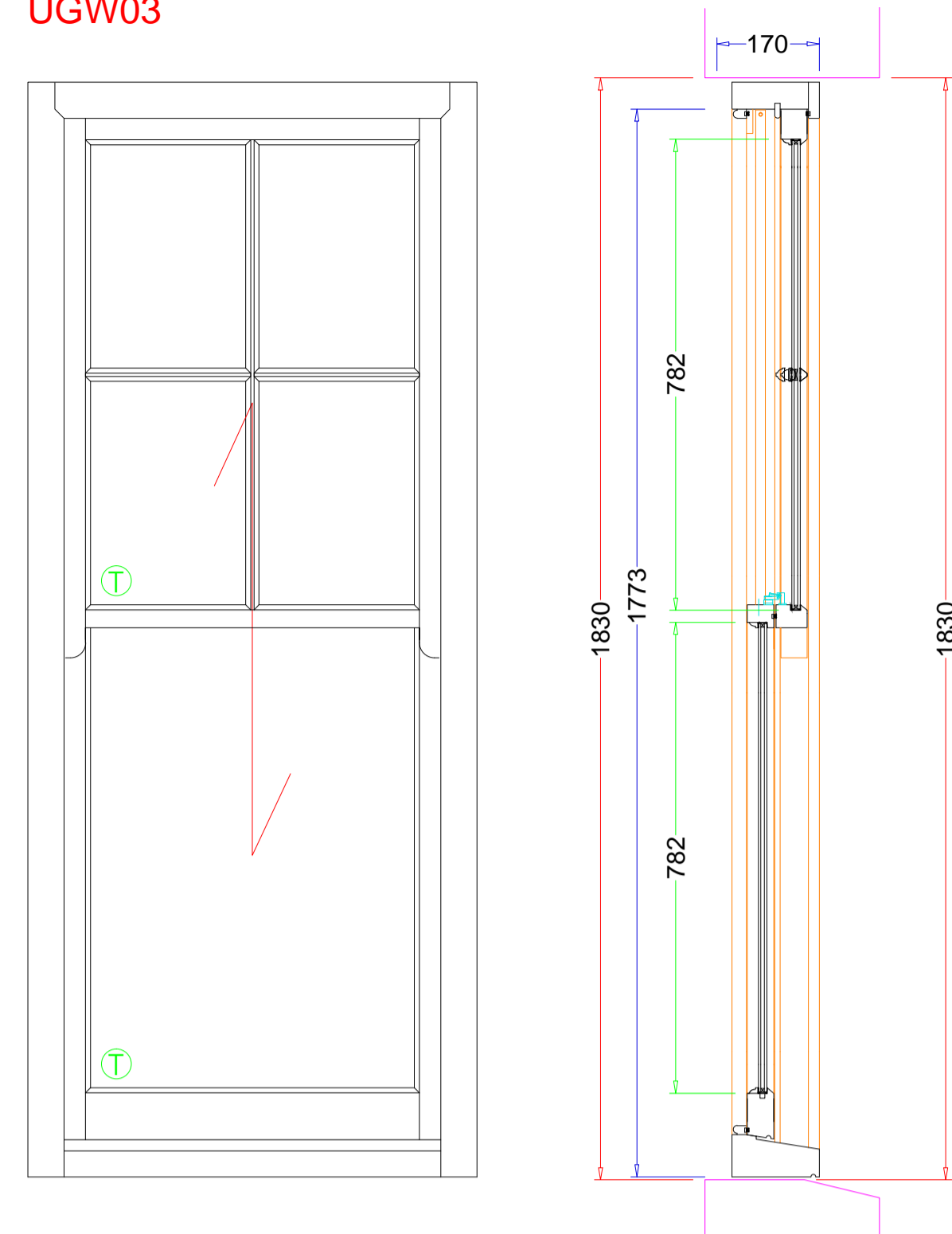


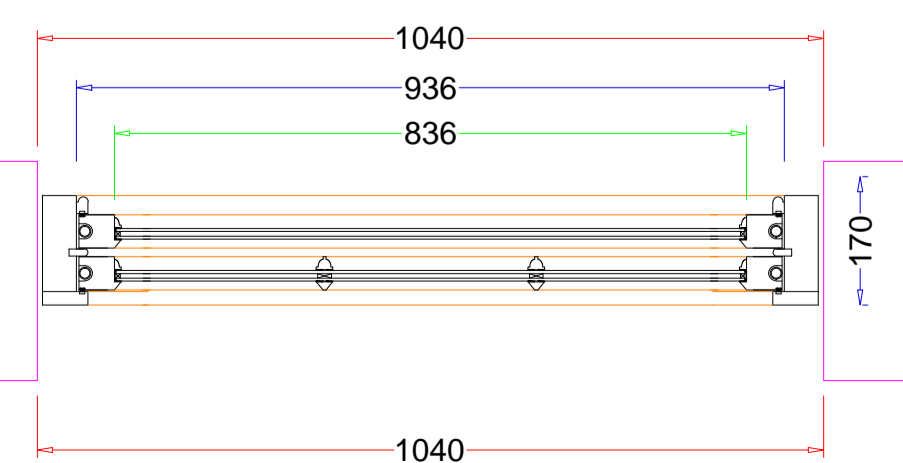
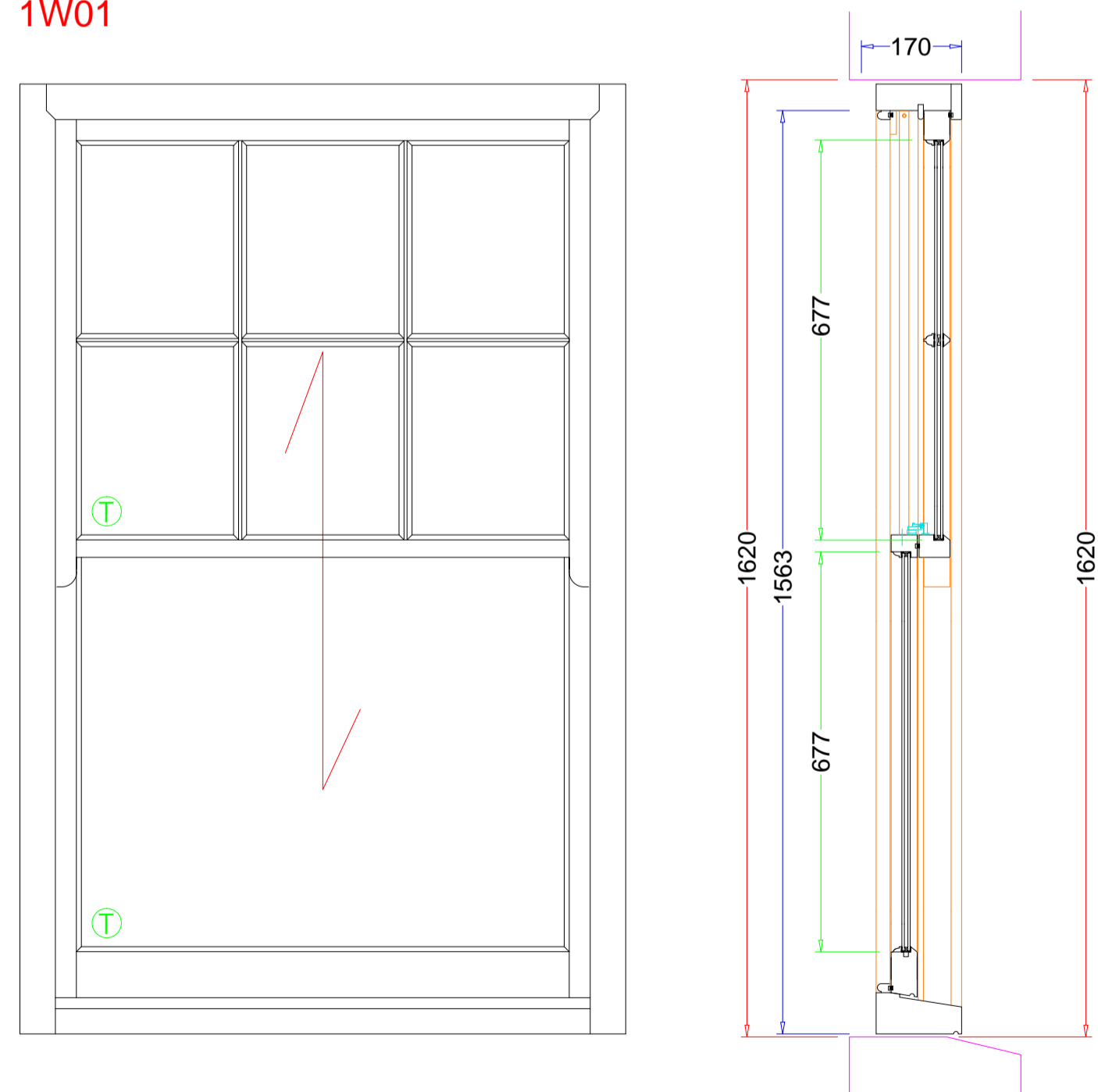
UGW02



UGW03

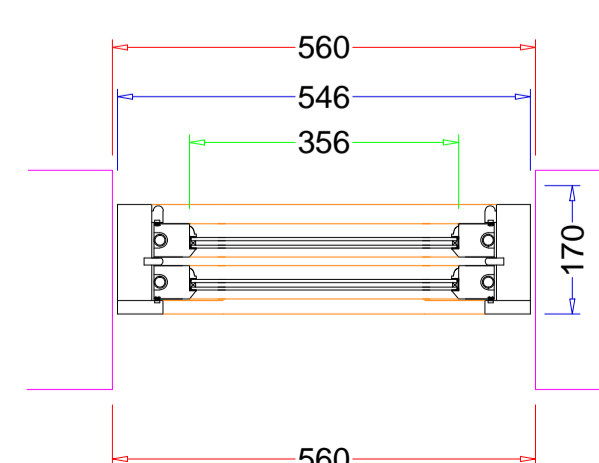
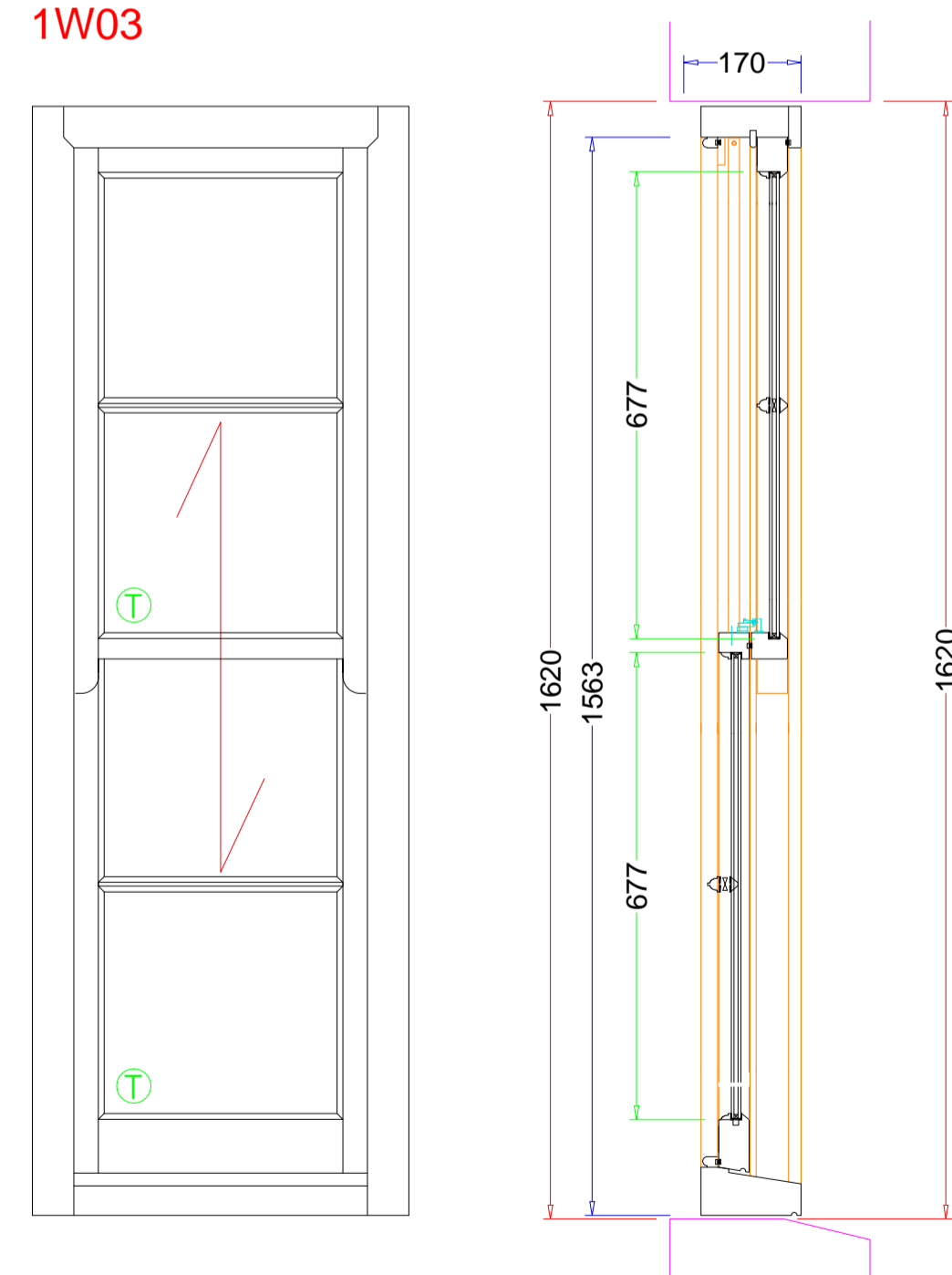


1W01

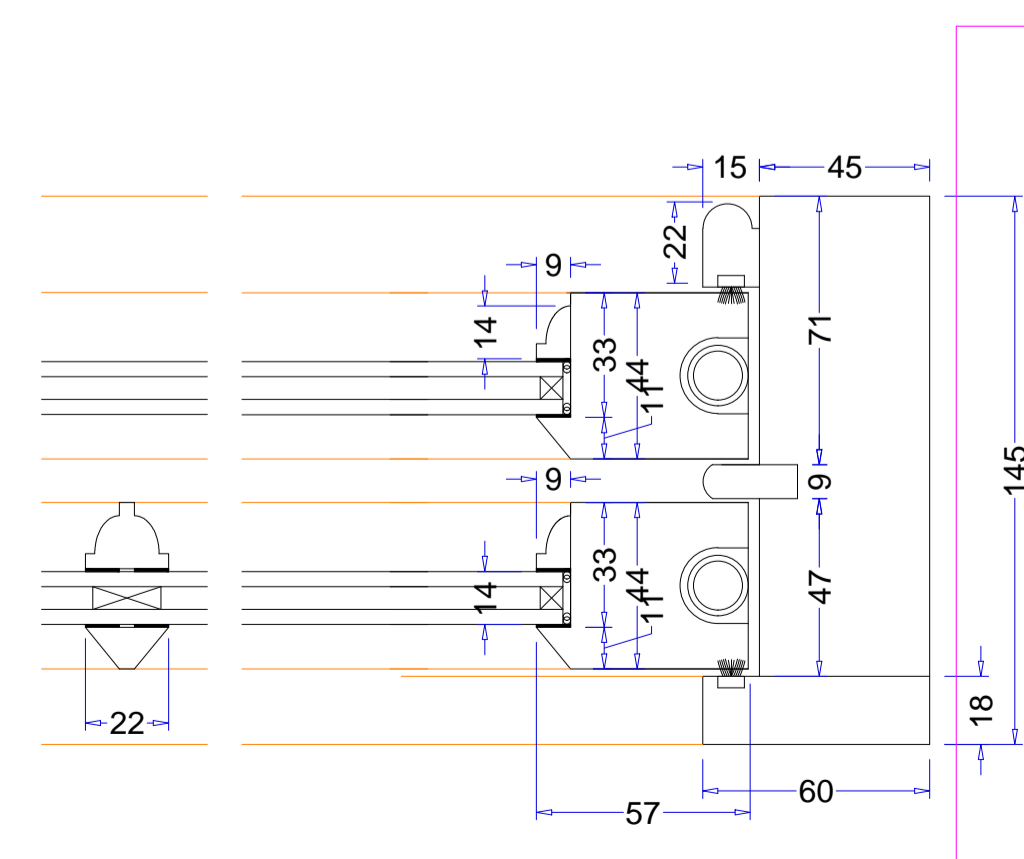


01 ELEVATION
Scale: 1:10 @A1

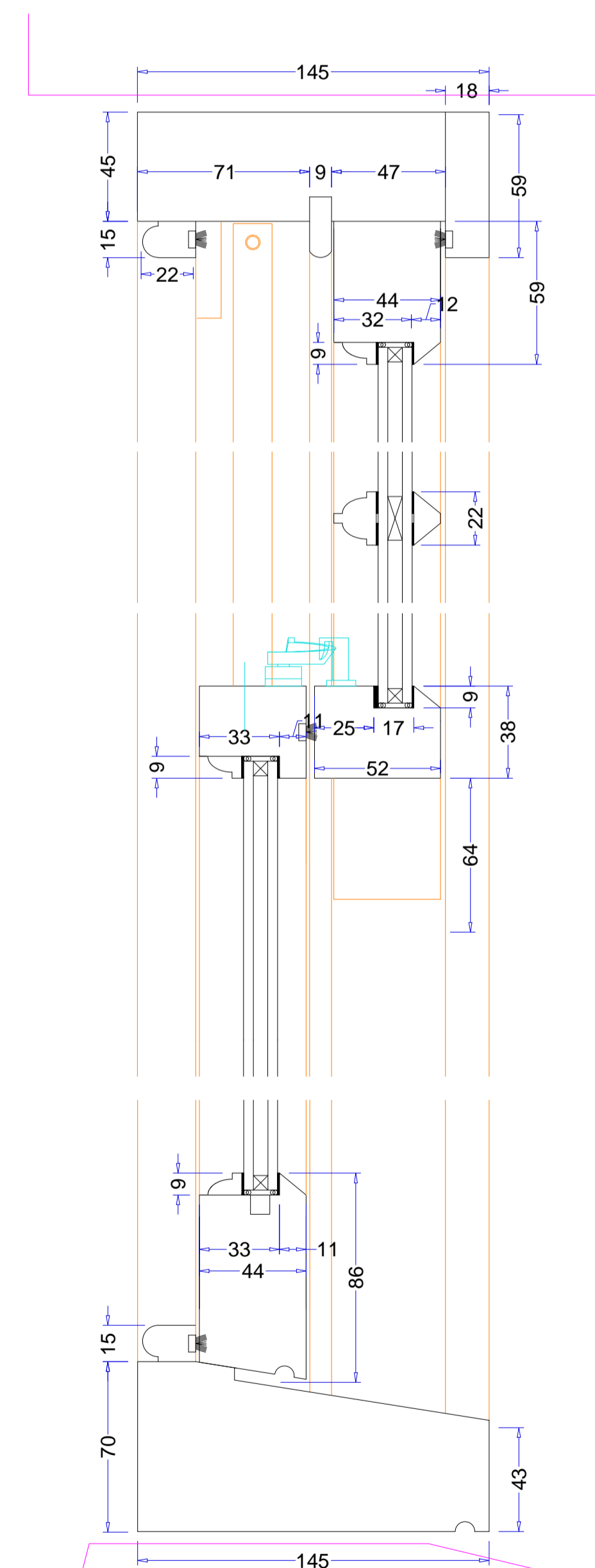
1W03



02 PLAN SECTION DETAILS
Scale: 1:2 @A1



IRONMONGERY DRAWN AS INDICATIVE ONLY



03 HEIGHT SECTION DETAILS
Scale: 1:2 @A1

SPECIFICATIONS

- TO SUPPLY ONLY SPIRAL BALANCE SASH WINDOW AND FITTED BY K&D
- MATERIALS: ALL MADE OUT OF HARDWOOD.
- DOUBLE GLAZED WITH 4MM OPTIWHITE (OUTER PANE) / 6MM KRYPTON FILL / 4MM PILKINGTON K GLASS™ S TOUGHENED
SPACER BAR COLOURS = WHITE / BLACK / MID GREY
STICK ON GLAZING BARS.
- IRONMONGERY:
SASHES OPERATED ON SPIRAL SPRING SUPPLIED AND FITTED BY K&D
ALLOWANCE HAS BEEN MADE TO DRILL HOLES FOR "FREE ISSUE" RESTRICTORS, SAMPLE REQUIRED ON DRAWING APPROVAL.
- PRIMED ONLY WHITE OR GREY (FOR DARK FINISHED COLOUR) TBC

DATE REVISION NOTES

10.03.21 REV 01:

NOTES ON DRAWINGS

- ALL DRAWINGS ARE FROM AN EXTERNAL POINT OF VIEW UNLESS OTHERWISE STATED
- THIS DRAWING IS SOLELY PREPARED FOR THE USE OF K&D JOINERY IN PREPARATION OF THEIR WORK AND MUST NOT BE USED FOR ANY OTHER PURPOSE
- DOUBLE DOORS AND CASEMENTS WITHOUT A VERTICAL TRANSOM WILL ALLOW A TINY AMOUNT OF LIGHT LEAKAGE AT THE TOP AND BOTTOM OF THE DOORS/SASHES
- CHECK THERE IS SUFFICIENT ACCESS THROUGH AROUND THE BUILDING SUITABLE FOR THE SIZE OF JOINERY INDICATED ON THIS DRAWING.

NOTES ON SIZES

- WE CANNOT GUARANTEE THE STABILITY OF ANY DOOR OVER 2000mm
- WOOD IS A NATURAL PRODUCT THAT RESPONDS TO TEMPERATURE AND HUMIDITY VARIATIONS BY EXPANDING AND CONTRACTING. MOVEMENT SHOULD BE EXPECTED DURING THE DIFFERENT SEASONS THROUGHOUT THE YEAR. K&D JOINERY CANNOT BE HELD RESPONSIBLE FOR NATURAL MOVEMENT IN TIMBER AND ANY FUTURE ADJUSTMENTS FOLLOWING DELIVERY/INSTALLATION OF PRODUCTS WILL BE CHARGED FOR IF YOU REQUIRE A COMPLETELY STABLE PRODUCT WITH NO MOVEMENT WE HIGHLY SUGGEST USING ACCOYA TIMBER

NOTES ON FINISHING

- K&D JOINERY DOES NOT RECOMMEND FINISHING EXTERNAL JOINERY IN BLACK OR A SIMILAR DARK COLOUR AND CANNOT OFFER ANY GUARANTEES DUE TO THE TIMBER BECOMING MORE SUSCEPTIBLE TO MOVEMENT, TWISTING, WARPING, CRACKING DUE TO THE DARKER COLOUR ABSORBING MORE HEAT
- ALL JOINERY WILL BE PRIMED WHITE UNLESS OTHERWISE SPECIFIED
- COLOUR VARIATION CAN BE EXPECTED WHEN USING CLEAR STAINED FINISHES, ESPECIALLY WHEN THE JOINERY IS MADE OUT OF BEECH AND OAK
- ALL CLEAR FINISHED EXTERIOR JOINERY SHOULD BE TREATED ON A YEARLY BASIS FOLLOWING PROFESSIONAL GUIDELINES
- ANY INTERNAL MOULDINGS ARCHTRAVES OR WINDOW BOARDS ARE PRIMED ONLY

NOTES ON VENTILATION

- PLEASE NOTE, TRIBLE VENTS WILL NOT BE FITTED TO JOINERY UNLESS SPECIFIED BY THE CLIENT. WE CANNOT DETERMINE THE VENTILATION REQUIREMENTS.

NOTES FOR WORKSHOP

- END GRAIN SEALER TO BE USED ON ALL EXPOSED END GRAIN, INCLUDING THE ENDS OF BEADING.

NOTES ON MOISTURE CONTENT

- THE MOISTURE CONTENT OF THE TIMBER TO BE USED WILL BE 16% ± 3 (EXTERNAL)
- THE MOISTURE CONTENT OF THE TIMBER TO BE USED WILL BE 10% ± 2 (INTERNAL)

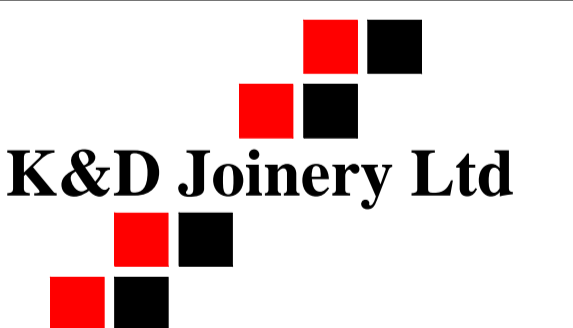
NOTES FOR SITE CARE AFTER DELIVERY

- APPROVAL OF THIS DRAWING CONFIRMS THAT YOU WILL REVIEW AND ADHERE TO THE SITE CARE INFORMATION SHEET ATTACHED WITH THIS DRAWING.

- KEY:
- = SURVEY SIZES
 - = REBATE SIZES
 - = JOINERY SIZES
 - = DATUM SIZES

READ IN CONJUNCTION WITH THE FOLLOWING DRAWINGS
XXXX-XXX to XXXX-XXX INCL.
ANY ARCHITECTS DRAWING
XXXXXXXXXXXXXXXXXX

ISSUED FOR APPROVAL



Joinery House 69 Chequers Lane - Dagenham RM9 6QJ
Tel: 020 8526 7020 Fax: 020 8526 7031
Website: www.kandd.org E-mail: info@kandd.org

CLIENT: M H Costa
PROJECT: 58A REDDINGTON ROAD
Post code
DESCRIPTION: Description
JOB N°: N/A
SCALE: SEE DRAWING @ A1
DWG N°: 20780A
REV: 02
DWG BY: ZK
DATE: 03/05/21