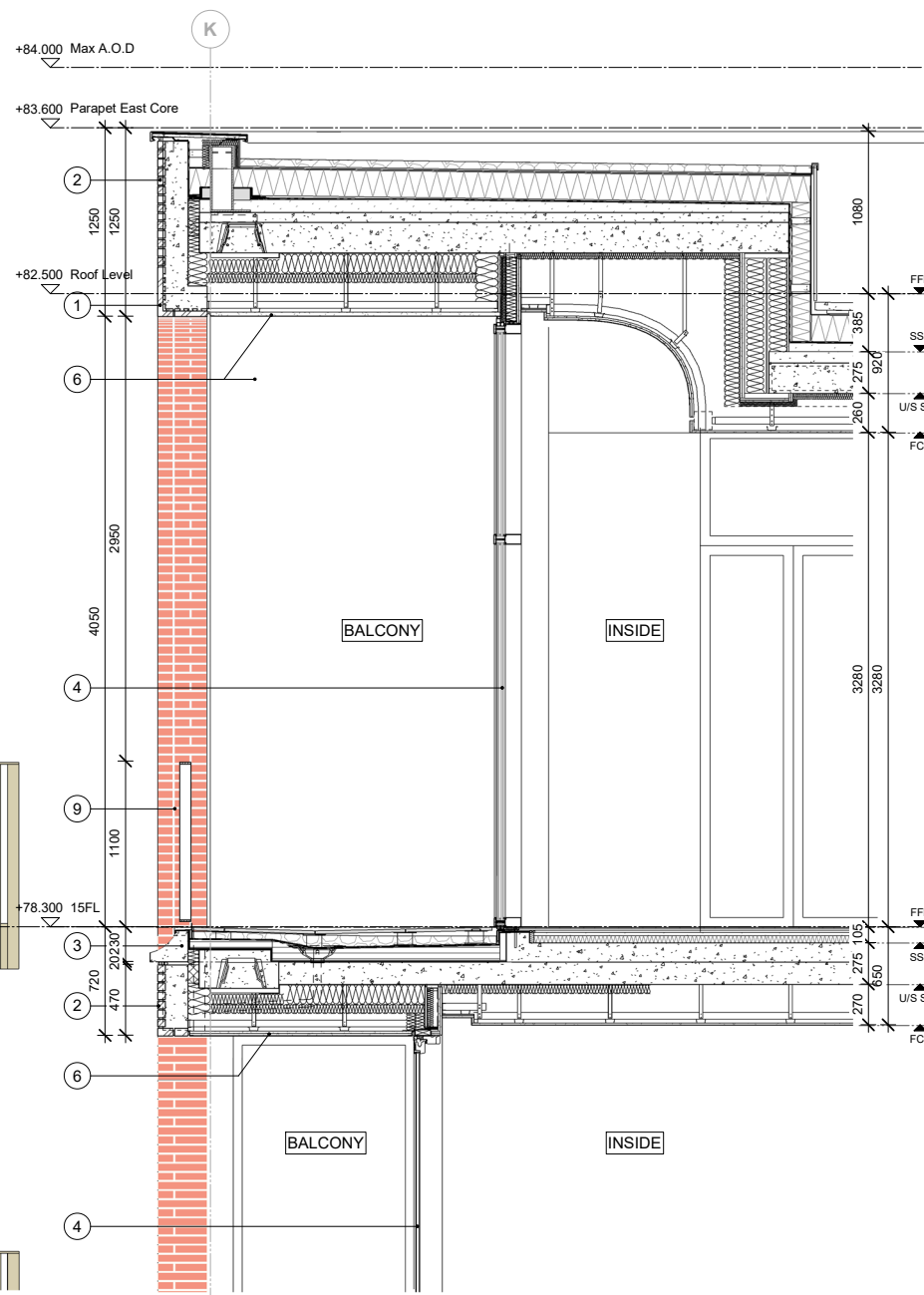
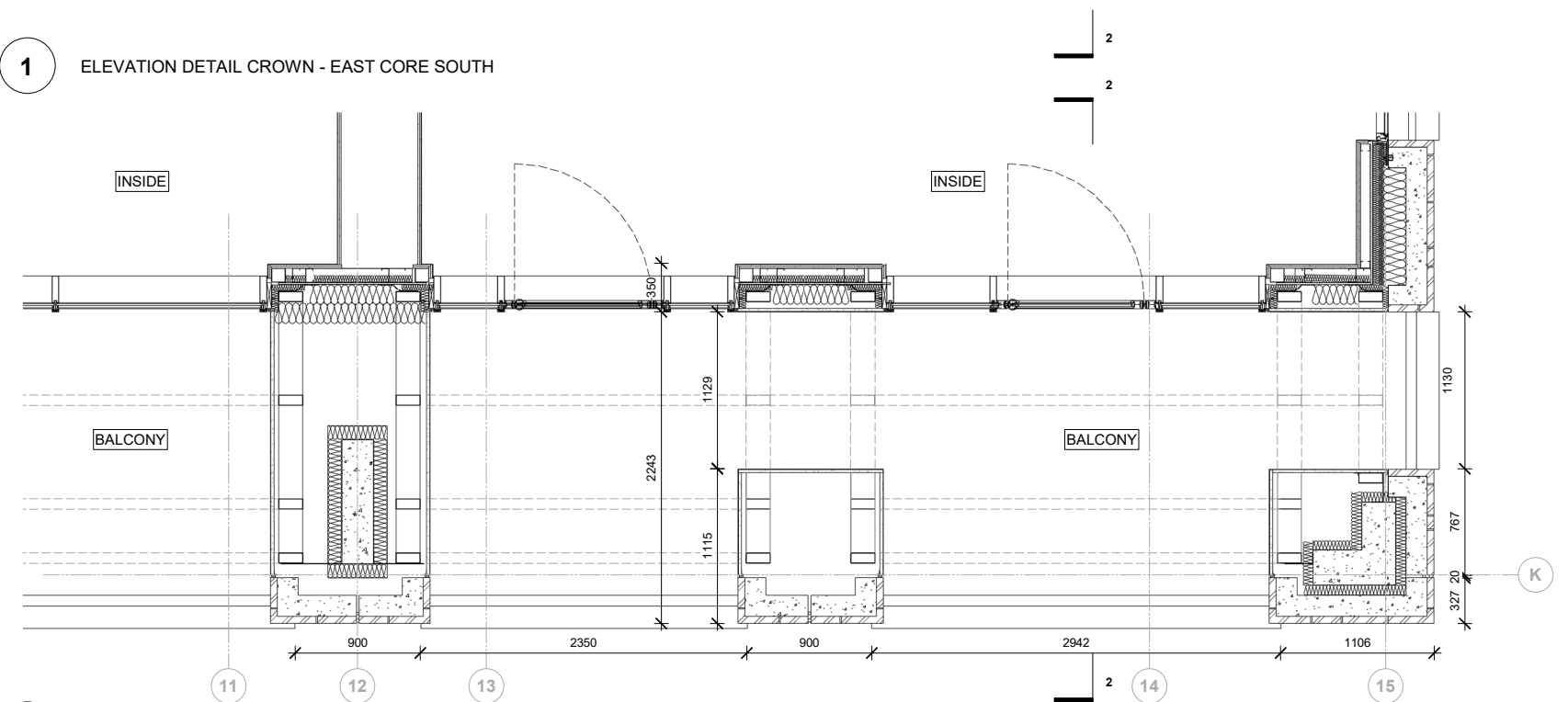




1 ELEVATION DETAIL CROWN - EAST CORE SOUTH



2 SECTION DETAIL CROWN - EAST CORE SOUTH

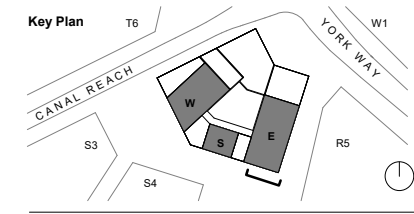


3 PLAN DETAIL CROWN - EAST CORE SOUTH

- Notes**
- 1 Brick  
Red Brickwork 'Type 1' Handmade, 327x50x102.5 mm format
  - 2 Mortar  
Recessed at arches and bucket handle mortar joints at orthogonal panels, coloured red, with sealant joint between precast units to match mortar colour
  - 3 Cill  
Reconstituted stone cill integral to precast concrete unit, coloured 'lime white', honed finish.
  - 4 Residential Glazing  
Metal inward opening/ fixed or sliding door glazing assembly, Champagne colour metallic finish.
  - 5 Retail/ Communal Entrance Glazing / Infill Arch Metal Patterned Panels  
Metal arched frame to glazing, inward opening door/ fixed glazing assembly, Champagne Colour metallic finish to all, with long Brass pull handles to entrance doors only.
  - 6 Smooth-polished plaster finish in colour 'Taupe' to ceilings (curved and Flat) and surfaces.
  - 7 Vaulted Feature to Main Entrance  
Brickwork Type 1, Handmade, 327x50x102.5 mm format.
  - 8 Courtyard Fundamenta  
Brickwork Type , Handmade, 327x50x102.5 mm format.
  - 9 Balustrades to all residential floors  
Painted Metal Balustrade Champagne Colour metallic finish. All fixings countersunk and painted to match metalwork.
  - 10 Projecting Balconies  
Metal framed balcony and balustrade, Champagne Colour metallic finish. All fixings countersunk and painted to match metalwork.
  - 11 Internal Courtyard Floor  
Red Brick Paver, 200x48x58 mm format
  - 12 Internal Courtyard Floor  
Coarse red/orange Terrazzo paving tile of various sizes
  - 13 Perforated metal sheet with laser cut radial pattern as shown to achieve 20% free area
  - 14 Thermally broken Recon Stone balcony, coloured 'lime white' to match window cills, honed finished.
  - 15 Red coloured Recon Stone, honed finished, for GF corner details
- Brickwork / Panel joints indicative only

Rev	Date	Description
2	14/07/21	Planning Update
1	23/05/19	Planning Update

**Note**  
Do not scale from this drawing. To be read in conjunction with all relevant Architects', Services and Structural Engineer's information. Architect to be immediately notified of discrepancies.



**ALISON BROOKS ARCHITECTS**

Unit 610 Highgate Studios  
53-79 Highgate Road  
London NW51TL, UK  
T +44 (0)20 7267 9777  
info@alisonbrooksarchitects.com

**Project:**  
Building S5 King's Cross Central

**Client:**  
King's Cross Central Limited Partnership

**Project Number:** 2433 **Status:** For Planning Purposes Only

**Drawing Title:**  
Crown - East Core South

**Date:** 14/07/21 **Drawn:** JR  
**Scale:** 1:25 @A1 **Checked:** FC  
1:50 @A3

**Drawing No:** KXC-S5-001-A-ABA2433-21-515 PL **Rev:** 2

