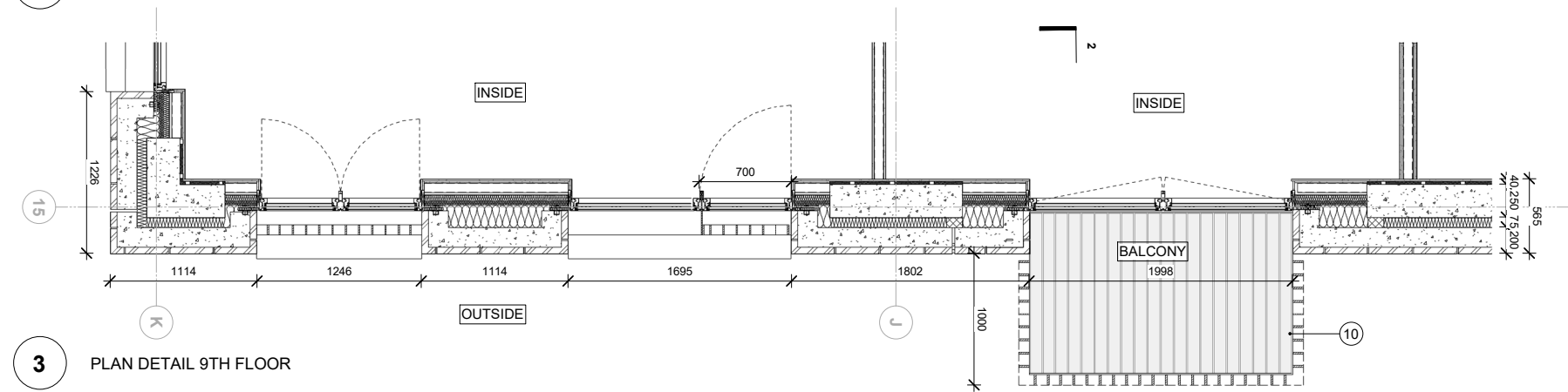
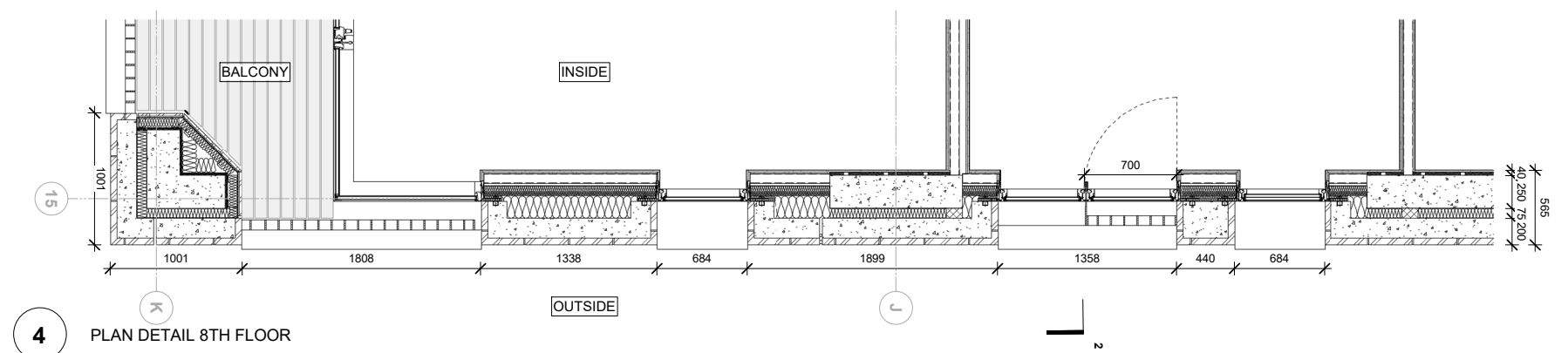




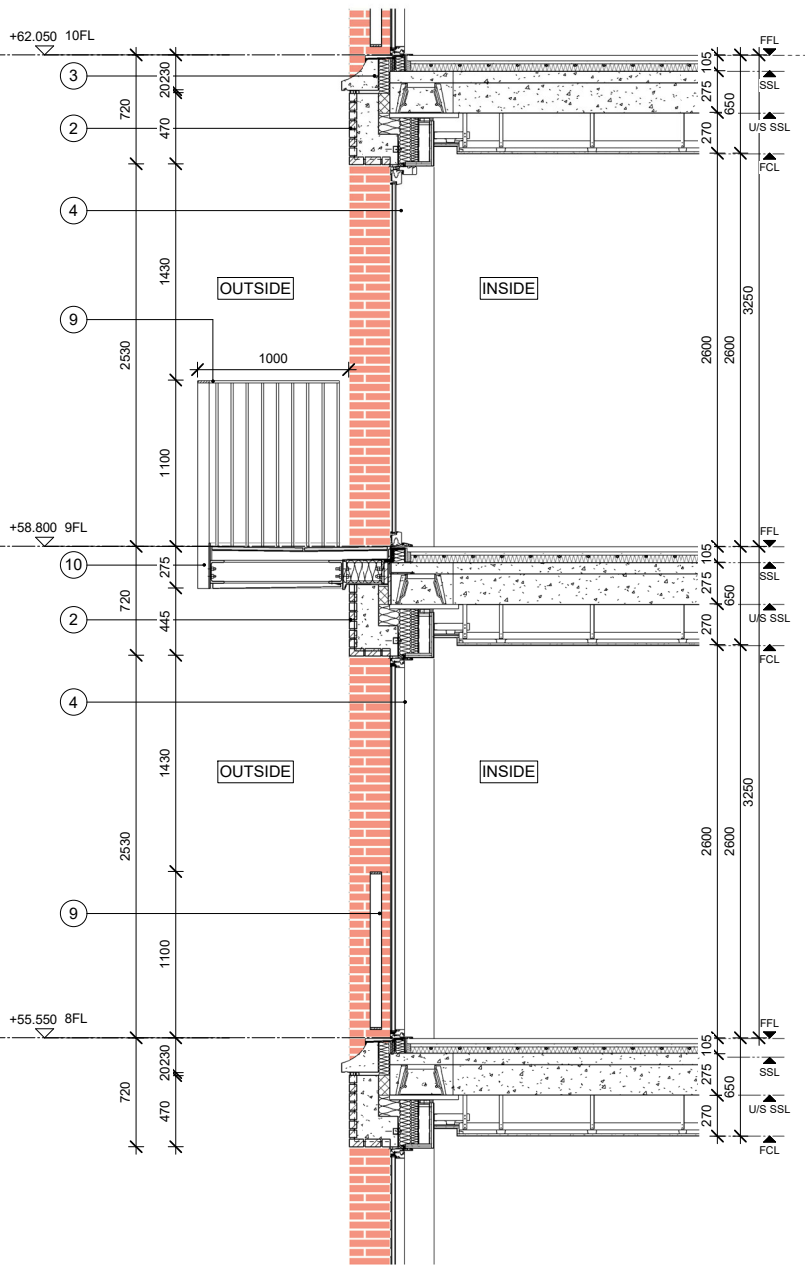
1 ELEVATION DETAIL MID FLOORS - EAST CORE



3 PLAN DETAIL 9TH FLOOR



4 PLAN DETAIL 8TH FLOOR



2 SECTION DETAIL MID FLOORS - EAST CORE

Notes

- 1 Brick  
Red Brickwork 'Type 1' Handmade, 327x50x102.5 mm format
- 2 Mortar  
Recessed at arches and bucket handle mortar joints at orthogonal panels, coloured red, with sealant joint between precast units to match mortar colour
- 3 Cill  
Reconstituted stone cill integral to precast concrete unit, coloured "lime white", honed finish.
- 4 Residential Glazing  
Metal inward opening/fixd or sliding door glazing assembly, Champagne colour metallic finish.
- 5 Retail/ Communal Entrance Glazing / Infill Arch Metal Patterned Panels  
Metal arched frame to glazing, inward opening door/ fixed glazing assembly, Champagne Colour metallic finish to all, with long Brass pull handles to entrance doors only.
- 6 Smooth-polished plaster finish in colour 'Taupe' to ceilings (curved and Flat) and surfaces.
- 7 Vaulted Feature to Main Entrance  
Brickwork Type 1, Handmade, 327x50x102.5 mm format.
- 8 Courtyard Fondamenta  
Brickwork Type , Handmade, 327x50x102.5 mm format.
- 9 Balustrades to all residential floors  
Painted Metal Balustrade Champagne Colour metallic finish. All fixings countersunk and painted to match metalwork.
- 10 Projecting Balconies  
Metal framed balcony and balustrade, Champagne Colour metallic finish. All fixings countersunk and painted to match metalwork.
- 11 Internal Courtyard Floor  
Red Brick Paver, 200x48x58 mm format
- 12 Internal Courtyard Floor  
Coarse red/orange Terrazzo paving tile of various sizes
- 13 Perforated metal sheet with laser cut radial pattern as shown to achieve 20% free area
- 14 Thermally broken Recon Stone balcony, coloured "lime white" to match window cills, honed finished.
- 15 Red coloured Recon Stone, honed finished, for GF corner details

Brickwork / Panel joints indicative only

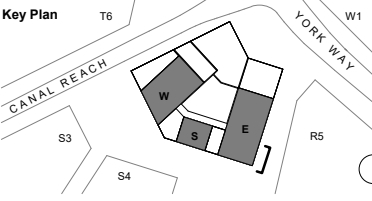
Rev	Date	Description
-----	------	-------------

2	23/05/19	Planning Update
1	29/08/18	Planning

Note

Do not scale from this drawing. To be read in conjunction with all relevant Architects', Services and Structural Engineer's information. Architect to be immediately notified of discrepancies.

Key Plan



ALISON BROOKS  
ARCHITECTS

Unit 610 Highgate Studios  
53-79 Highgate Road  
London NW51TL, UK  
T +44 (0)20 7267 9777  
info@alisonbrooksarchitects.com

Project:

Building S5 King's Cross Central

Client:

King's Cross Central Limited Partnership

Project Number:

2433

Status:

For Planning Purposes Only

Drawing Title:

Mid Floors - East Core Bolt On Balcony

Date: 23/05/19

Drawn: JR

Scale: 1 : 25

@A1

Checked: FC

1 : 50

@A3

Drawing No:

KXC-S5-001-A-ABA2433-21-512 PL

Rev:

2

