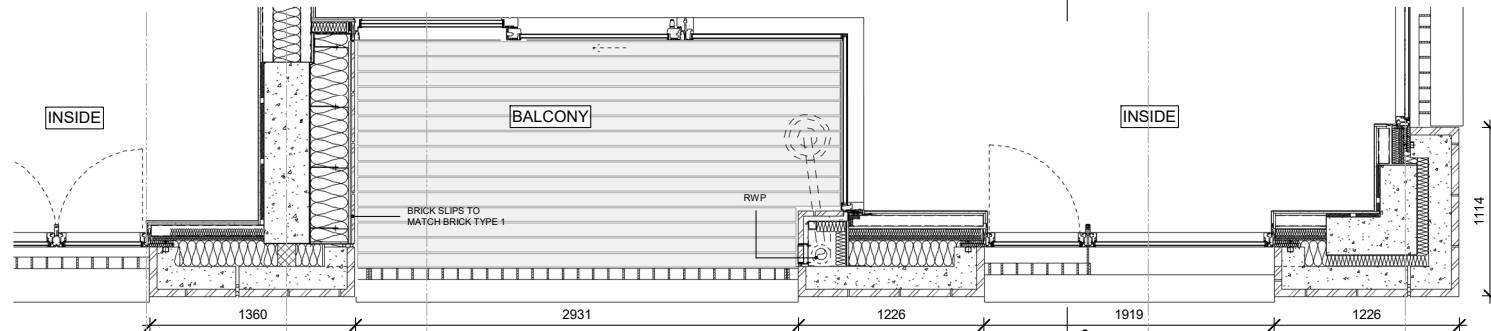
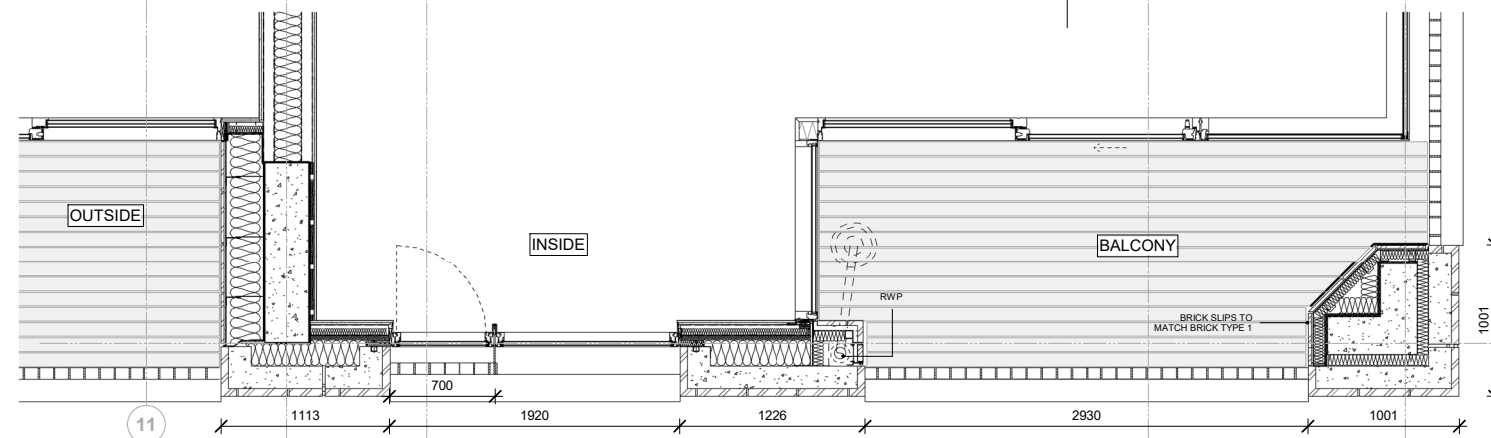




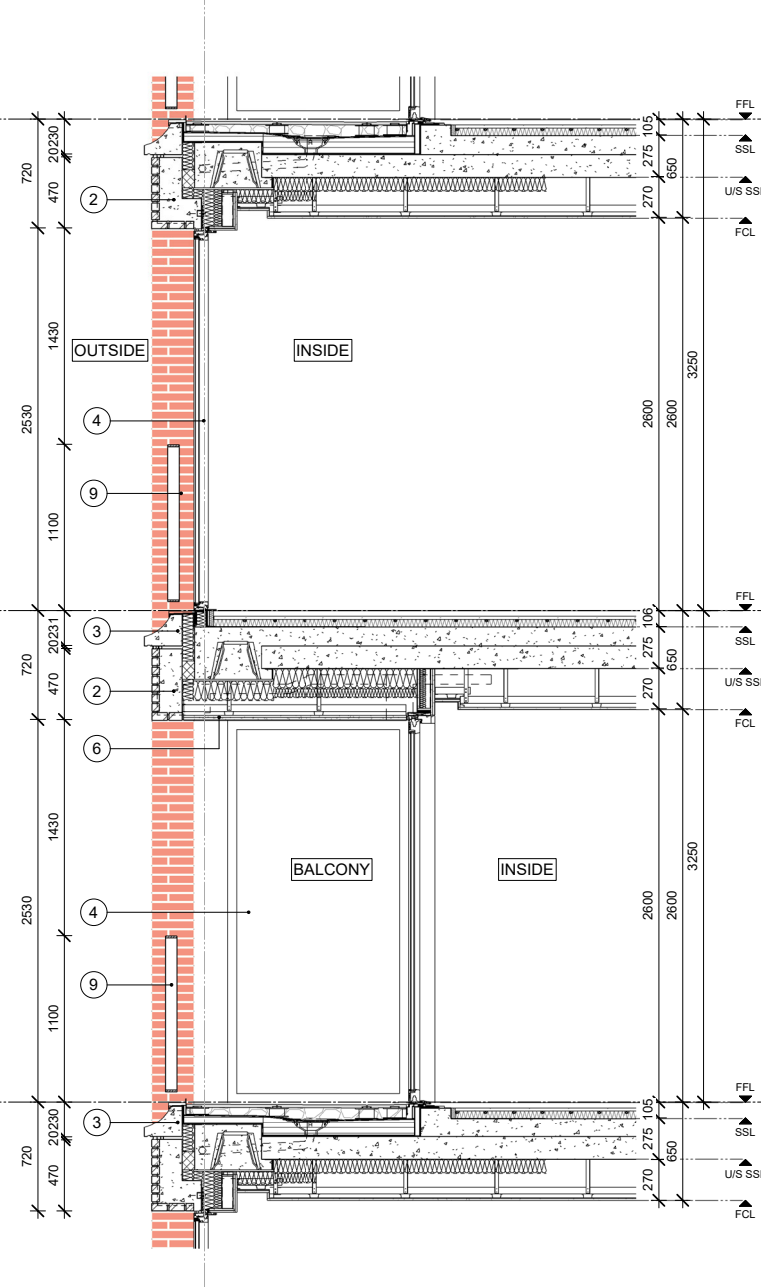
1 ELEVATION DETAIL MID FLOOR EAST CORE



3 PLAN DETAIL 9TH EAST CORE



4 PLAN DETAIL 8TH EAST CORE



2 SECTION DETAIL MID FLOOR EAST CORE

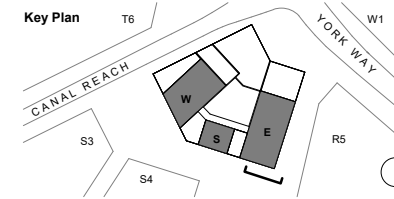
- Notes**
- Brick  
Red Brickwork 'Type 1' Handmade, 327x50x102.5 mm format
  - Mortar  
Recessed at arches and bucket handle mortar joints at orthogonal panels, coloured red, with sealant joint between precast units to match mortar colour
  - Cill  
Reconstituted stone cill integral to precast concrete unit, coloured 'lime white', honed finish.
  - Residential Glazing  
Metal inward opening/fixing or sliding door glazing assembly, Champagne colour metallic finish.
  - Retail/ Communal Entrance Glazing / Infill Arch Metal Patterned Panels  
Metal arched frame to glazing, inward opening door/ fixed glazing assembly, Champagne Colour metallic finish to all, with long Brass pull handles to entrance doors only.
  - Smooth-polished plaster finish in colour 'Taupe' to ceilings (curved and Flat) and surfaces.
  - Vaulted Feature to Main Entrance  
Brickwork Type 1, Handmade, 327x50x102.5 mm format.
  - Courtyard Fondamenta  
Brickwork Type , Handmade, 327x50x102.5 mm format.
  - Balustrades to all residential floors  
Painted Metal Balustrade Champagne Colour metallic finish. All fixings countersunk and painted to match metalwork.
  - Projecting Balconies  
Metal framed balcony and balustrade, Champagne Colour metallic finish. All fixings countersunk and painted to match metalwork.
  - Internal Courtyard Floor  
Red Brick Paver, 200x48x58 mm format
  - Internal Courtyard Floor  
Coarse red/orange Terrazzo paving tile of various sizes
  - Perforated metal sheet with laser cut radial pattern as shown to achieve 20% free area
  - Thermally broken Recon Stone balcony, coloured 'lime white' to match window cills, honed finished.
  - Red coloured Recon Stone, honed finished, for GF corner details

Brickwork / Panel joints indicative only

Rev Date Description

2 14/07/21 Planning Update  
1 23/05/19 Planning Update

**Note**  
Do not scale from this drawing. To be read in conjunction with all relevant Architects', Services and Structural Engineer's information. Architect to be immediately notified of discrepancies.



**ALISON BROOKS  
ARCHITECTS**

Unit 610 Highgate Studios  
53-79 Highgate Road  
London NW51TL, UK  
T +44 (0)20 7267 9777  
info@alisonbrooksarchitects.com

**Project:**  
**Building S5 King's Cross Central**

**Client:**  
**King's Cross Central Limited Partnership**

**Project Number:** 2433 **Status:** For Planning Purposes Only

**Drawing Title:**  
**Mid Floors - East Core South**

**Date:** 14/07/21 **Drawn:** JR  
**Scale:** 1 : 25 @A1 **Checked:** FC  
1 : 50 @A3

**Drawing No:** KXC-S5-001-A-ABA2433-21-509 **Rev:** 2

