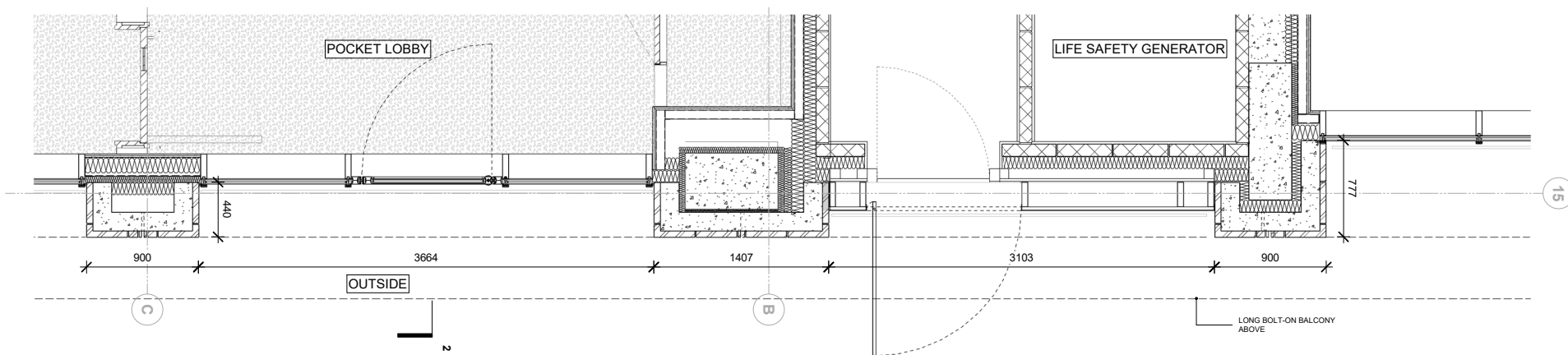
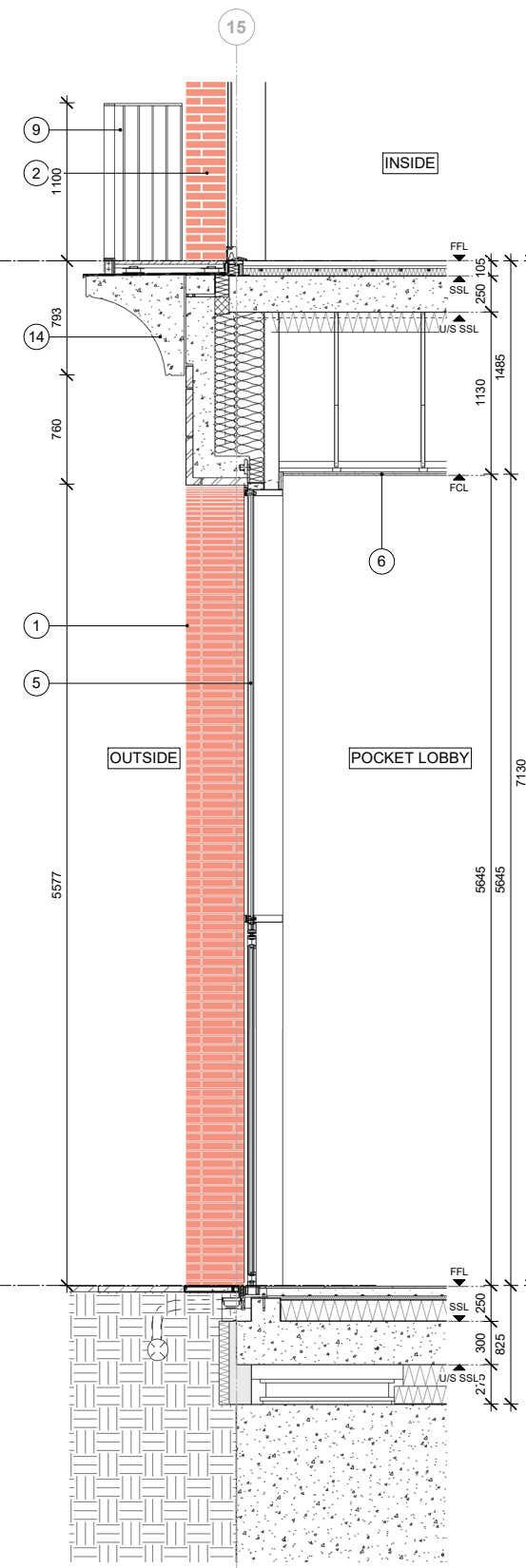


1 ELEVATION DETAIL POCKET ENTRANCE



3 PLAN DETAIL POCKET ENTRANCE



2 SECTION DETAIL POCKET ENTRANCE

Notes

- Brick
Red Brickwork 'Type 1' Handmade, 327x50x102.5 mm format
- Mortar
Recessed at arches and bucket handle mortar joints at orthogonal panels, coloured red, with sealant joint between precast units to match mortar colour
- Cill
Reconstituted stone cill integral to precast concrete unit, coloured 'lime white', honed finish.
- Residential Glazing
Metal inward opening/fix or sliding door glazing assembly, Champagne colour metallic finish.
- Retail/ Communal Entrance Glazing / Infill Arch Metal Patterned Panels
Metal arched frame to glazing, inward opening door/ fixed glazing assembly, Champagne Colour metallic finish to all, with long Brass pull handles to entrance doors only.
- Smooth-polished plaster finish in colour 'Taupe' to ceilings (curved and Flat) and surfaces.
- Vaulted Feature to Main Entrance
Brickwork Type 1, Handmade, 327x50x102.5 mm format.
- Courtyard Fundamenta
Brickwork Type , Handmade, 327x50x102.5 mm format.
- Balustrades to all residential floors
Painted Metal Balustrade Champagne Colour metallic finish. All fixings countersunk and painted to match metalwork.
- Projecting Balconies
Metal framed balcony and balustrade, Champagne Colour metallic finish. All fixings countersunk and painted to match metalwork.
- Internal Courtyard Floor
Red Brick Paver, 200x48x58 mm format
- Internal Courtyard Floor
Coarse red/orange Terrazzo paving tile of various sizes
- Perforated metal sheet with laser cut radial pattern as shown to achieve 20% free area
- Thermally broken Recon Stone balcony, coloured 'lime white' to match window cills, honed finished.
- Red coloured Recon Stone, honed finished, for GF corner details

Brickwork / Panel joints indicative only

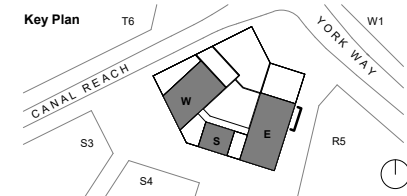
Rev Date Description

2 14/07/21 Planning Update
1 23/05/19 Planning Update

Note

Do not scale from this drawing. To be read in conjunction with all relevant Architects', Services and Structural Engineer's information. Architect to be immediately notified of discrepancies.

Key Plan



**ALISON BROOKS
ARCHITECTS**

Unit 610 Highgate Studios
53-79 Highgate Road
London NW51TL, UK
T +44 (0)20 7267 9777
info@alisonbrooksarchitects.com

Project:
Building S5 King's Cross Central

Client:
King's Cross Central Limited Partnership

Project Number: 2433 **Status:** For Planning Purposes Only

Drawing Title:
Ground Floor - Continuous Balcony

Date: 14/07/21 **Drawn:** AK
Scale: 1 : 25 @A1 **Checked:** FC
1 : 50 @A3

Drawing No: KXC-S5-001-A-ABA2433-21-503 PL **Rev:** 2