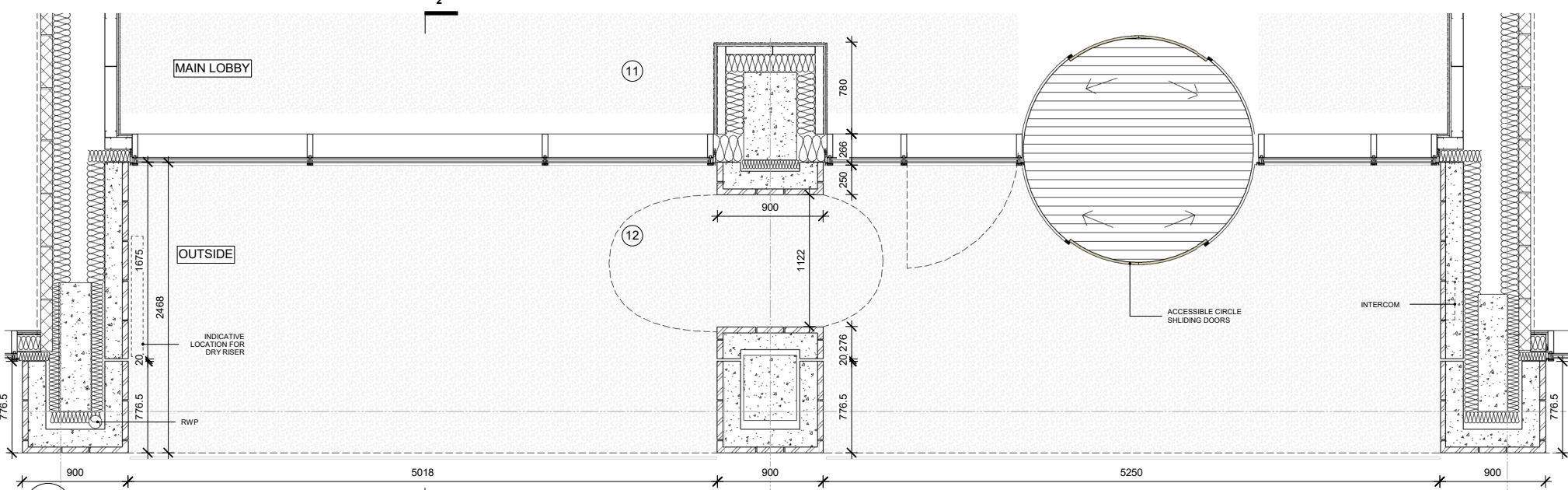
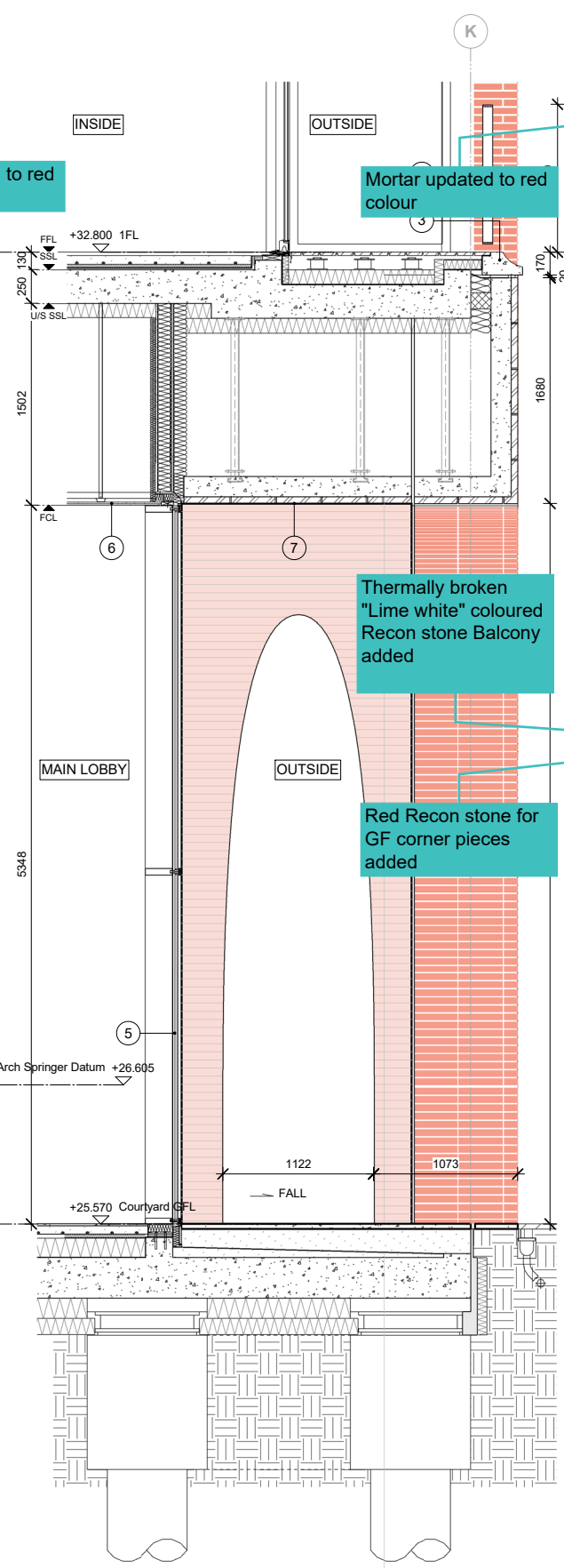


1 ELEVATION DETAIL MAIN ENTRANCE



3 PLAN DETAIL MAIN ENTRANCE



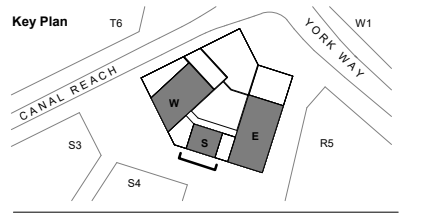
2 SECTION DETAIL MAIN ENTRANCE

- Notes**
- 1 Brick  
Red Brickwork 'Type 1' Handmade, 327x50x102.5 mm format
  - 2 Mortar  
Recessed, coloured 'lime white' mortar joints and dusted 20mm sealant joint between precast units to match mortar colour
  - 3 Cill  
Reconstituted stone cill integral to precast concrete unit, colour to match 'lime white' mortar, honed finish
  - 4 Residential Glazing  
Metal inward opening/ fixed or sliding door glazing assembly, Champagne colour metallic finish
  - 5 Retail/ Communal Entrance Glazing / Infill Arch Metal Patterned Panels  
Metal arched frame to glazing, inward opening door/ fixed glazing assembly, Champagne Colour metallic finish to all, with long Brass pull handles to entrance doors only.
  - 6 Smooth-polished plaster finish in colour 'Taupe' to ceilings (curved and Flat) and surfaces
  - 7 Vaulted Feature to Main Entrance  
Brickwork Type 1, Handmade, 327x50x102.5 mm format
  - 8 Courtyard Fundamenta  
Brickwork Type 1, Handmade, 327x50x102.5 mm format
  - 9 Balustrades to all residential floors  
Painted Metal Balustrade Champagne Colour metallic finish. All fixings countersunk and painted to match metalwork.
  - 10 Projecting Balconies  
Metal framed balcony and balustrade, Champagne Colour metallic finish. All fixings countersunk and painted to match metalwork.
  - 11 Internal Courtyard Floor  
Red Brick Paver, 200x48x58 mm format
  - 12 Internal Courtyard Floor  
Coarse red/orange Terrazzo paving tile of various sizes
  - 13 Perforated metal sheet with laser cut radial pattern as shown to achieve 20% free area
- Brickwork / Panel joints indicative only

Rev	Date	Description
2	23/05/19	Planning Update
1	29/08/18	Planning

**Note**

Do not scale from this drawing. To be read in conjunction with all relevant Architects', Services and Structural Engineer' information. Architect to be immediately notified of discrepancies.



**ALISON BROOKS ARCHITECTS**

Unit 610 Highgate Studios  
53-79 Highgate Road  
London NW51TL, UK  
T +44 (0)20 7267 9777  
info@alisonbrooksarchitects.com

**Project:**  
**Building S5 King's Cross Central**

**Client:**  
**King's Cross Central Limited Partnership**

**Project Number:**  
**2433**

**Status:**  
**For planning purposes only**

**Drawing Title:**  
**Ground Floor - Main Entrance Arches**

**Date:** 15/05/2019 12:02:55  
**Scale:** 1 : 25  
1 : 50

**Drawn:** AK  
**Checked:** FC  
**@A1**  
**@A3**

**Drawing No:**  
**KXC-S5-A-ABA2433-21-501 PL**

**Rev:**  
**02**

