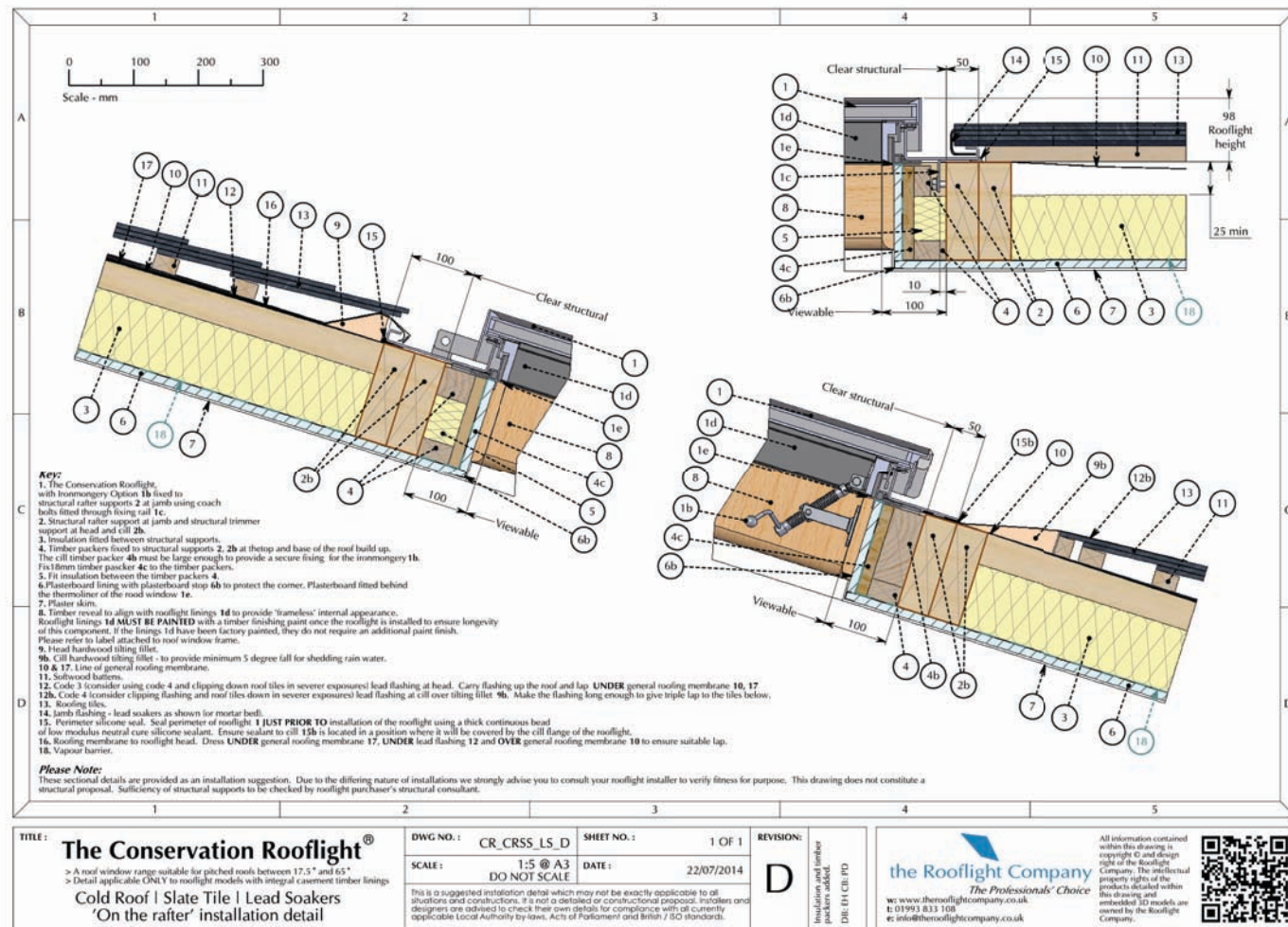


The existing roof is finished with Westmoreland slates which are nailed directly to soft wood boards. This is less easy to alter than a traditional roof, but this has been achieved on a number of the existing houses.

It is proposed to insert one small conservation rooflight, supplied by The Rooflight Company, into the existing roof slope to provide daylighting to the loft. A similar proposal was approved at no. 9 Holly Village (2005/0894/P).



Above: Conservation rooflight to no.9 Holly Village