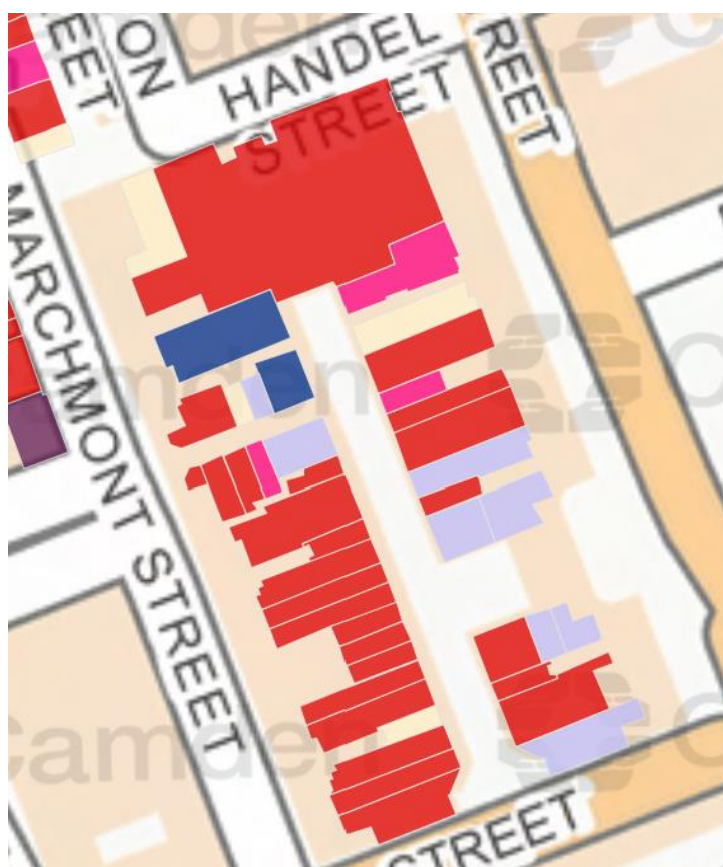


Camden Retail Survey Data Brunswick Centre

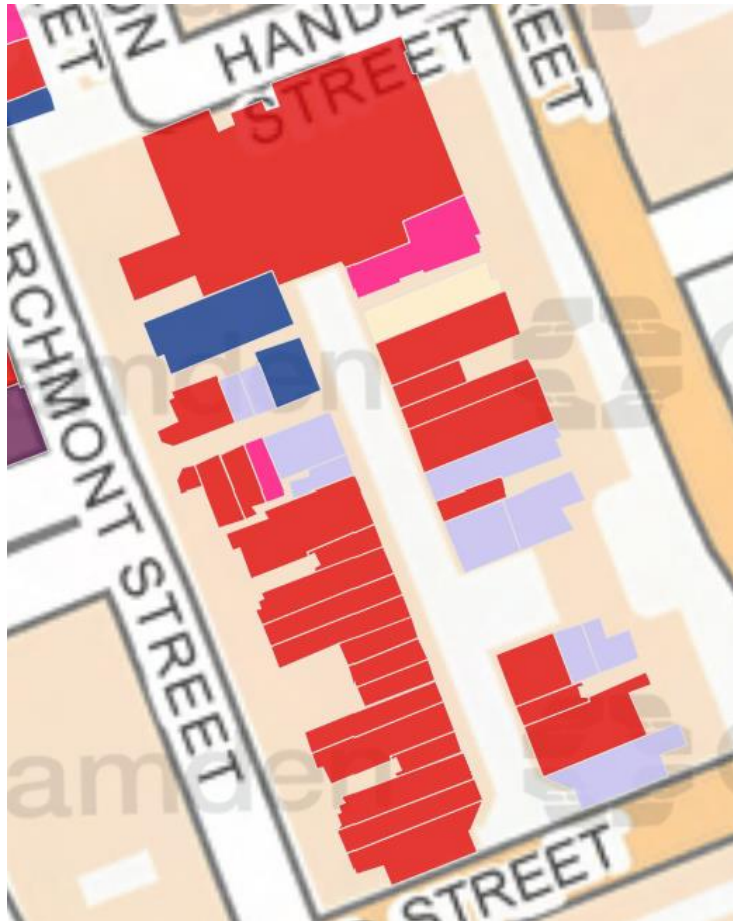
2010 - 2018

Retail Survey 2010



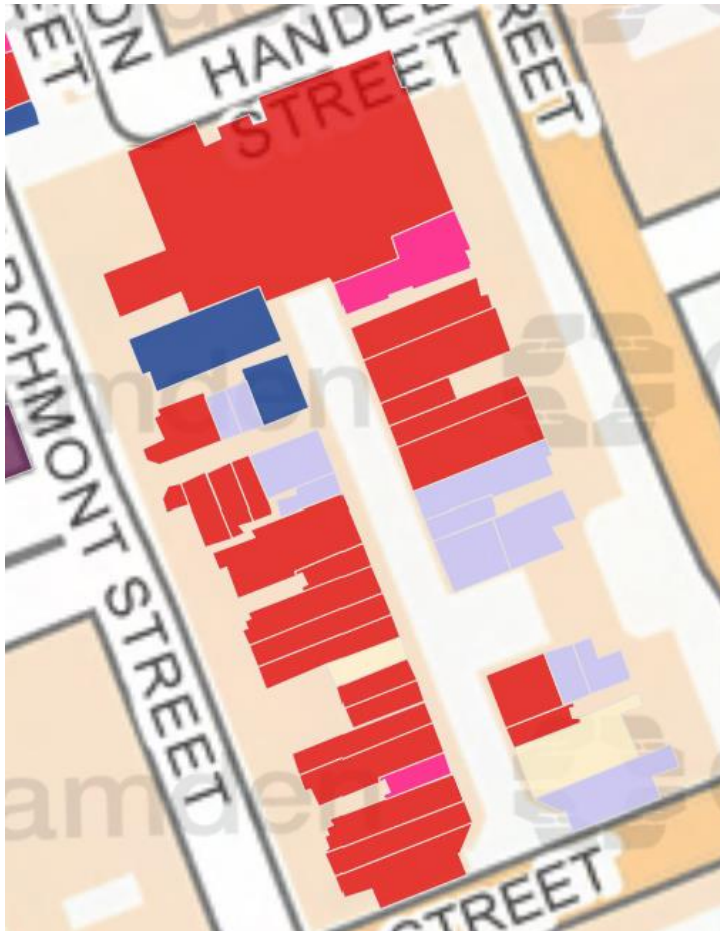
- ⊖ RetailSurvey2010
- A1: Shops
 - A2: Financial and Professional Services
 - A3: Food and Drink
 - A4: Drinking Establishments
 - A5: Hot Food Takeaways
 - B1: Business
 - B8: Storage or Distribution
 - C1: Hotels
 - C2: Residential Institutions
 - C3: Dwelling Houses
 - C4: Houses in Multiple Occupation
 - D1: Non-residential Institutions
 - D2: Assembly and leisure
 - SG: Sui Generis
 - Vacant / Other

Retail Survey 2011



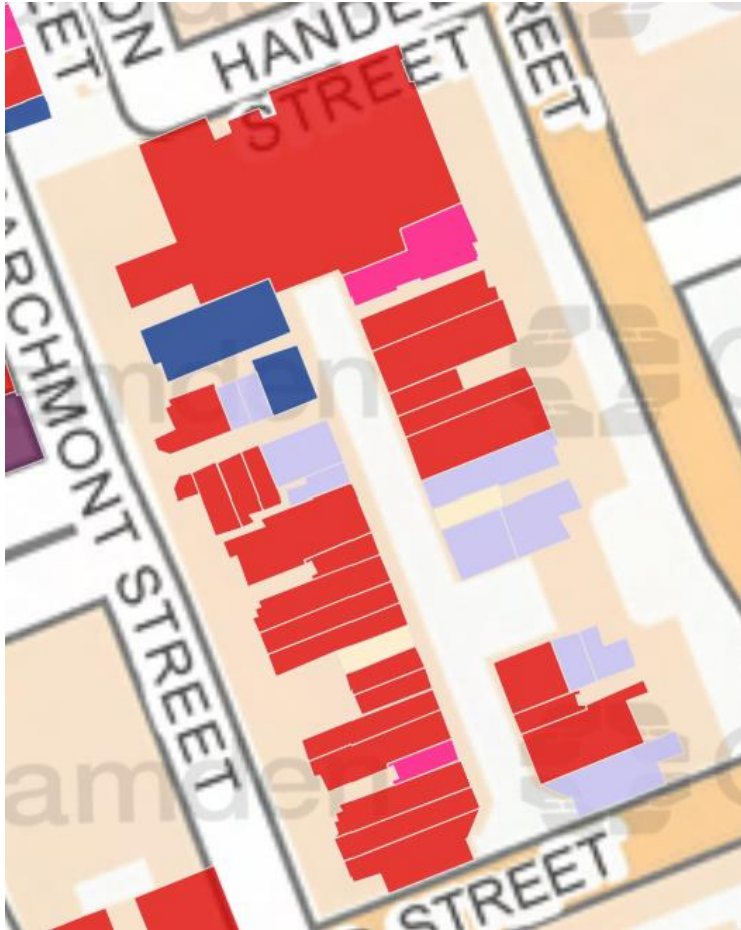
- ⊖ RetailSurvey2011
- A1: Shops
 - A2: Financial and Professional Services
 - A3: Food and Drink
 - A4: Drinking Establishments
 - A5: Hot Food Takeaways
 - B1: Business
 - B8: Storage or Distribution
 - C1: Hotels
 - C2: Residential Institutions
 - C3: Dwelling Houses
 - C4: Houses in Multiple Occupation
 - D1: Non-residential Institutions
 - D2: Assembly and leisure
 - SG: Sui Generis
 - Vacant / Other

Retail Survey 2012



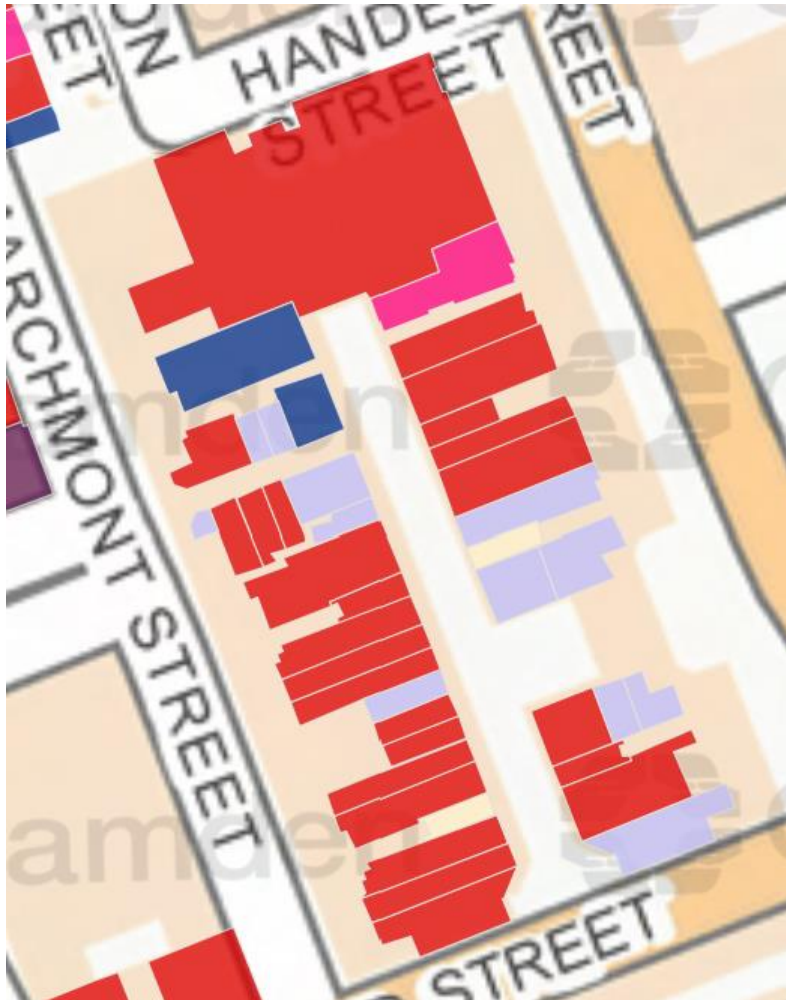
- ⊖ RetailSurvey2012
- A1: Shops
 - A2: Financial and Professional Services
 - A3: Food and Drink
 - A4: Drinking Establishments
 - A5: Hot Food Takeaways
 - B1: Business
 - B8: Storage or Distribution
 - C1: Hotels
 - C2: Residential Institutions
 - C3: Dwelling Houses
 - C4: Houses in Multiple Occupation
 - D1: Non-residential Institutions
 - D2: Assembly and leisure
 - SG: Sui Generis
 - Vacant / Other

Retail Survey 2013



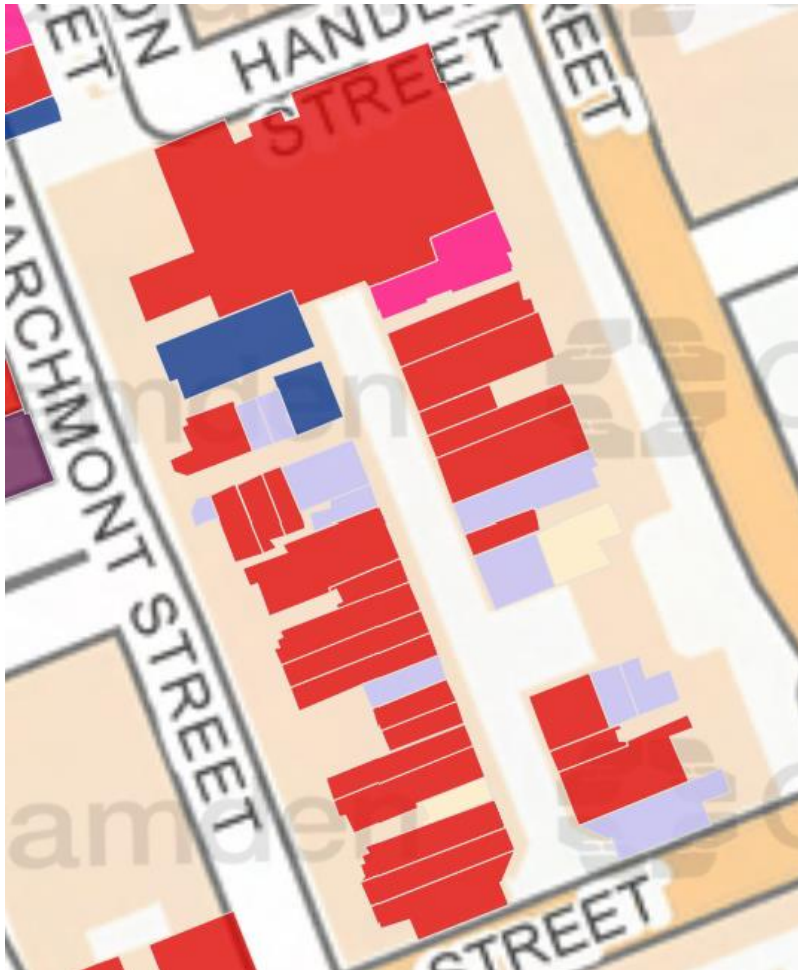
- ⊖ RetailSurvey2013
- A1: Shops
 - A2: Financial and Professional Services
 - A3: Food and Drink
 - A4: Drinking Establishments
 - A5: Hot Food Takeaways
 - B1: Business
 - B8: Storage or Distribution
 - C1: Hotels
 - C2: Residential Institutions
 - C3: Dwelling Houses
 - C4: Houses in Multiple Occupation
 - D1: Non-residential Institutions
 - D2: Assembly and leisure
 - SG: Sui Generis
 - Vacant / Other

Retail Survey 2014



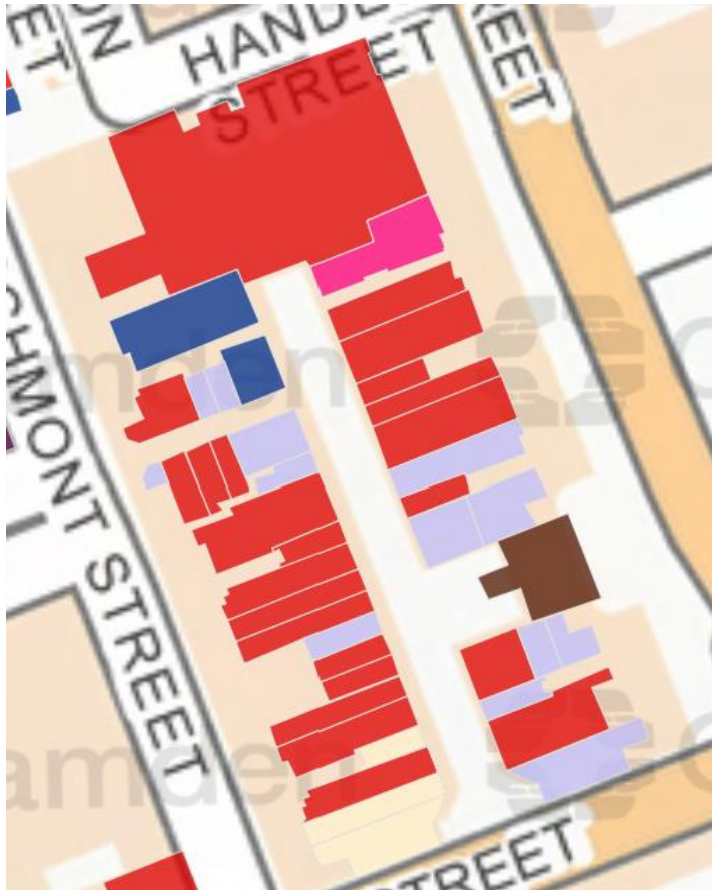
- ⊖ RetailSurvey2014
- A1: Shops
 - A2: Financial and Professional Services
 - A3: Food and Drink
 - A4: Drinking Establishments
 - A5: Hot Food Takeaways
 - B1: Business
 - B8: Storage or Distribution
 - C1: Hotels
 - C2: Residential Institutions
 - C3: Dwelling Houses
 - C4: Houses in Multiple Occupation
 - D1: Non-residential Institutions
 - D2: Assembly and leisure
 - SG: Sui Generis
 - Vacant / Other

Retail Survey 2015



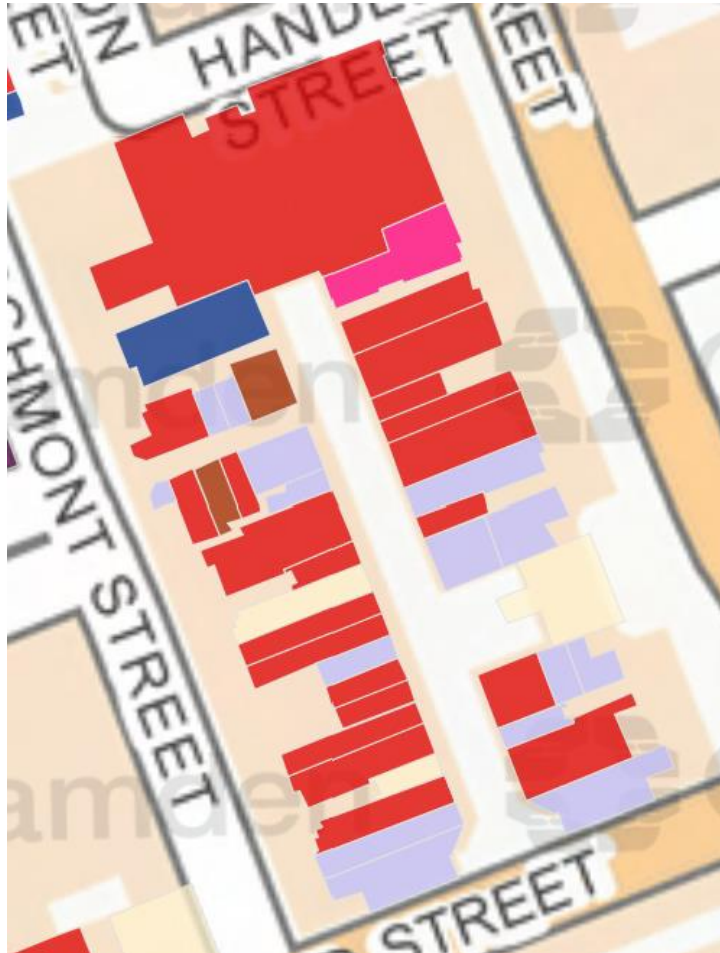
- ⊖ RetailSurvey2015
- A1: Shops
 - A2: Financial and Professional Services
 - A3: Food and Drink
 - A4: Drinking Establishments
 - A5: Hot Food Takeaways
 - B1: Business
 - B8: Storage or Distribution
 - C1: Hotels
 - C2: Residential Institutions
 - C3: Dwelling Houses
 - C4: Houses in Multiple Occupation
 - D1: Non-residential Institutions
 - D2: Assembly and leisure
 - SG: Sui Generis
 - Vacant / Other

Retail Survey 2016



- ⊖ RetailSurvey2016
- A1: Shops
 - A2: Financial and Professional Services
 - A3: Food and Drink
 - A4: Drinking Establishments
 - A5: Hot Food Takeaways
 - B1: Business
 - B8: Storage or Distribution
 - C1: Hotels
 - C2: Residential Institutions
 - C3: Dwelling Houses
 - C4: Houses in Multiple Occupation
 - D1: Non-residential Institutions
 - D2: Assembly and leisure
 - SG: Sui Generis
 - Vacant / Other

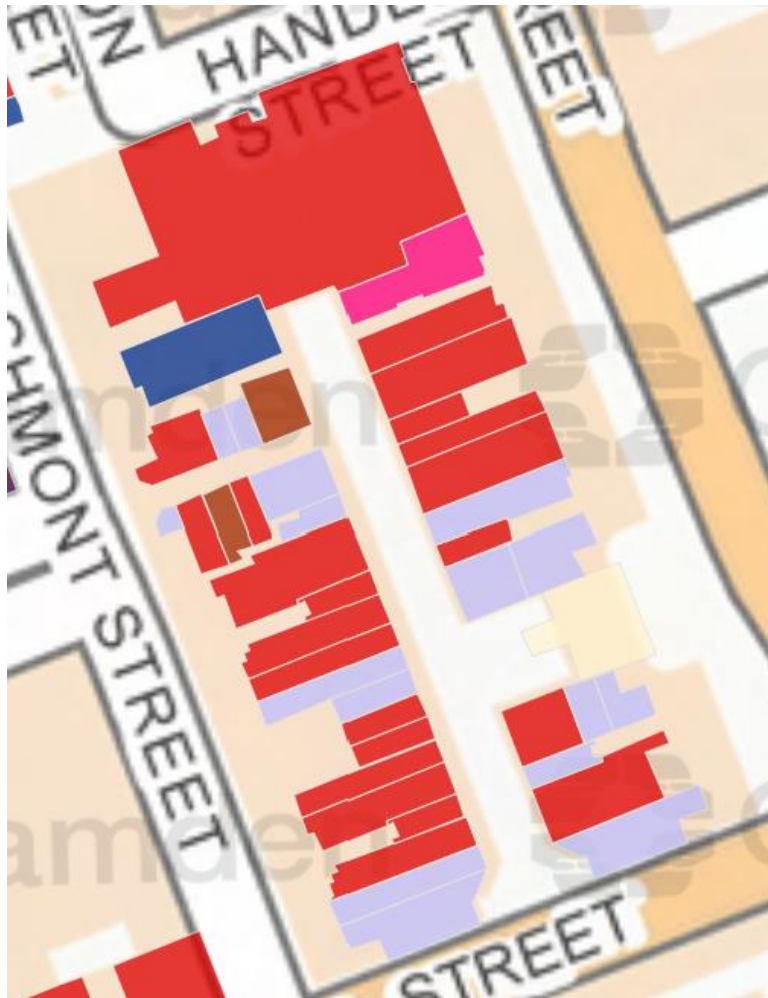
Retail Survey 2017



⊖ RetailSurvey2017

- A1: Shops
- A2: Financial and Professional Services
- A3: Food and Drink
- A4: Drinking Establishments
- A5: Hot Food Takeaways
- B1: Business
- B8: Storage or Distribution
- C1: Hotels
- C2: Residential Institutions
- C3: Dwelling Houses
- C4: Houses in Multiple Occupation
- D1: Non-residential Institutions
- D2: Assembly and leisure
- SG: Sui Generis
- Vacant / Other

Retail Survey 2018



- ⊖ RetailSurvey2018
- A1: Shops
 - A2: Financial and Professional Services
 - A3: Food and Drink
 - A4: Drinking Establishments
 - A5: Hot Food Takeaways
 - B1: Business
 - B8: Storage or Distribution
 - C1: Hotels
 - C2: Residential Institutions
 - C3: Dwelling Houses
 - C4: Houses in Multiple Occupation
 - D1: Non-residential Institutions
 - D2: Assembly and leisure
 - SG: Sui Generis
 - Vacant / Other