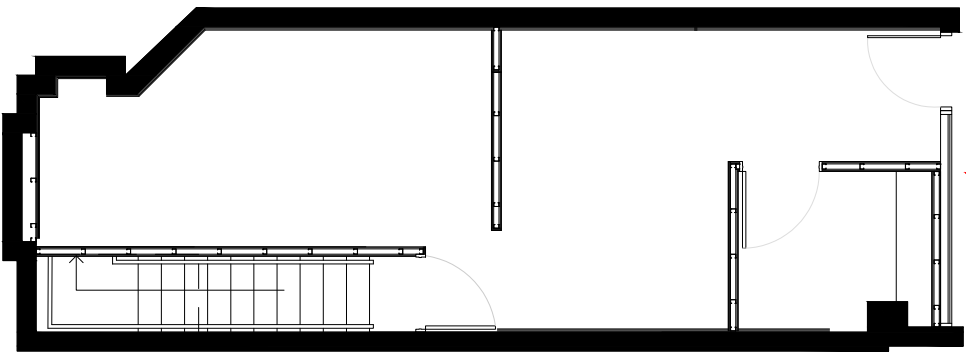


3 Proposed Ground Floor Plan
1:100 @ A3



This drawing has been produced using previous As Built information obtained from the WMS Drawing Office. There is a risk that this may not have been followed faithfully by the Main Contractor during the works. To this end, Darnton B3 Ltd. cannot guarantee that this drawing is an exact representation of what has been built.

AS BUILT ISSUE
FOR INCLUSION IN H&S FILE

GENERAL NOTES

All work to be carried out in strict accordance with the current Building Regulations and its latest amendments, and to the complete satisfaction of the Local Authorities Building Control.

Contractors are responsible for complying with all relevant BS etc., and check that Building Control and Environmental Health Departments are satisfied with the scope and content of all work on completion and obtain any necessary certificates.

All existing construction levels and dimensions to be checked prior to construction, especially where new construction levels and dimensions are to match existing.

All site dimensions and site levels must be checked on site.

This drawing must not be used for construction unless issued for construction.

This drawing should be read in conjunction with all relevant Engineer's and specialist drawings.

NOTE:

1. Based on As-Built Layout: 'WMS CAMDEN PHARMACY AS-BUILT 150321'
 2. Refer to Pharmacy Specialist's (T3 Design) drawings for Pharmacy fixtures details.
 3. Refer to specialist M&E Contractor's drawings for mechanical & electrical scope.
 4. Refer Signage Contractor's (Ahsleigh Sign) drawings for specs and visualisations
- "201231 - Morrisons Camden Extras"

G	16.07.21	PLANNING ISSUE: Issued to LPA for approval following feedback/ comments.	FH	VG
F	24.03.21	RECORD ISSUE: Issued to ICON for Record.	FH	VG
E	01.02.21	CONSTRUCTION ISSUE: Issued to ICON for Construction.	FH	VG
D	04.01.21	FULL PLANNING APPLICATION SUBMISSION TO LA - External Signage	FH	VG
C	14.12.20	FULL PLANNING APPLICATION SUBMISSION TO LA	FH	VG
B	11.12.20	Based on "WMS_CAMDEN PHARMACY_SK3 031220-DB3" and uploaded to ICON for Information.	FH	VG
A	07.12.20	Issued as part of Landlord Approval package.	FH	VG
REV	DATE	DESCRIPTION	DR	CH

PLANNING ISSUE

DB3 ARCHITECTURE AND DESIGN

LONDON
84 Great Suffolk Street, London, SE1 0BE.
T: 0207 689 1434 www.darntonb3.com

CLIENT

Morrisons

PROJECT
WMS 5K STORE
#303 WMS CAMDEN (66 CHALK FARM ROAD)

DRAWING
General Arrangement
Existing and Proposed External Elevations

SCALE @ A3
1:50

DRAWN
FH

CHECKED
VG

CREATION DATE
DECEMBER 2020

REVISION
G

DARNTONB3 DRAWING NO.
14648 - DB3 - 303 - 66 - DR - A - 90010

PROJECT NO - COMPANY - ZONE - LEVEL - TYPE - ROLE - NUMBER

© COPYRIGHT: ALL RIGHTS RESERVED.

THIS DRAWING MUST BE READ IN CONJUNCTION WITH ALL OTHER RELEVANT DRAWINGS AND INFORMATION.

DO NOT SCALE OFF DRAWINGS USE DISPLAYED DIMENSIONS ONLY.

THE DRAWING OR INFORMATION MUST NOT BE USED FOR CONSTRUCTION UNLESS EXPRESSLY ISSUED FOR CONSTRUCTION.

ANY DISCREPANCIES MUST BE REPORTED TO DARNTONB3 IMMEDIATELY.

DARNTONB3 LTD WORK TO A MANAGEMENT SYSTEM WHICH IS APPROVED TO ISO-9001 BY LRQA - CERTIFICATE NUMBER LRQA-0947162