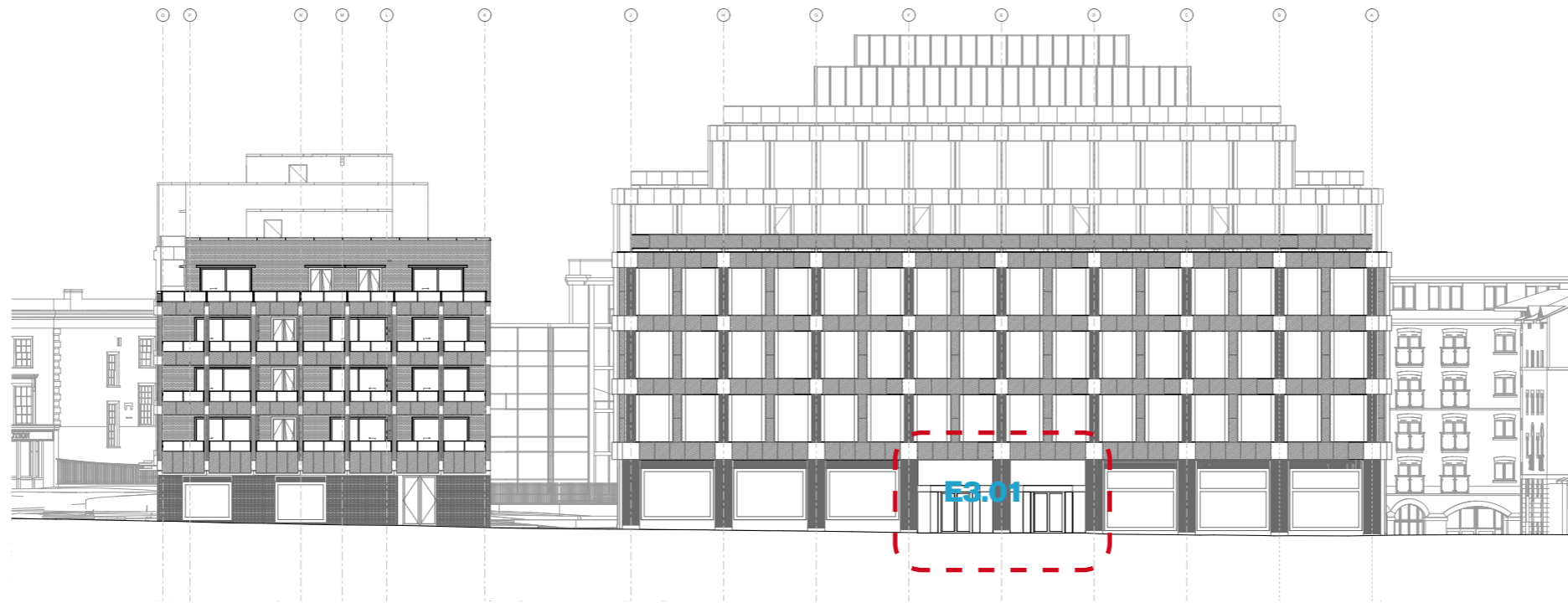


Elevation - Royal College Street



Elevation - Georgiana Street

Royal Collage Street and Georgiana Street elevations submitted in August 2019



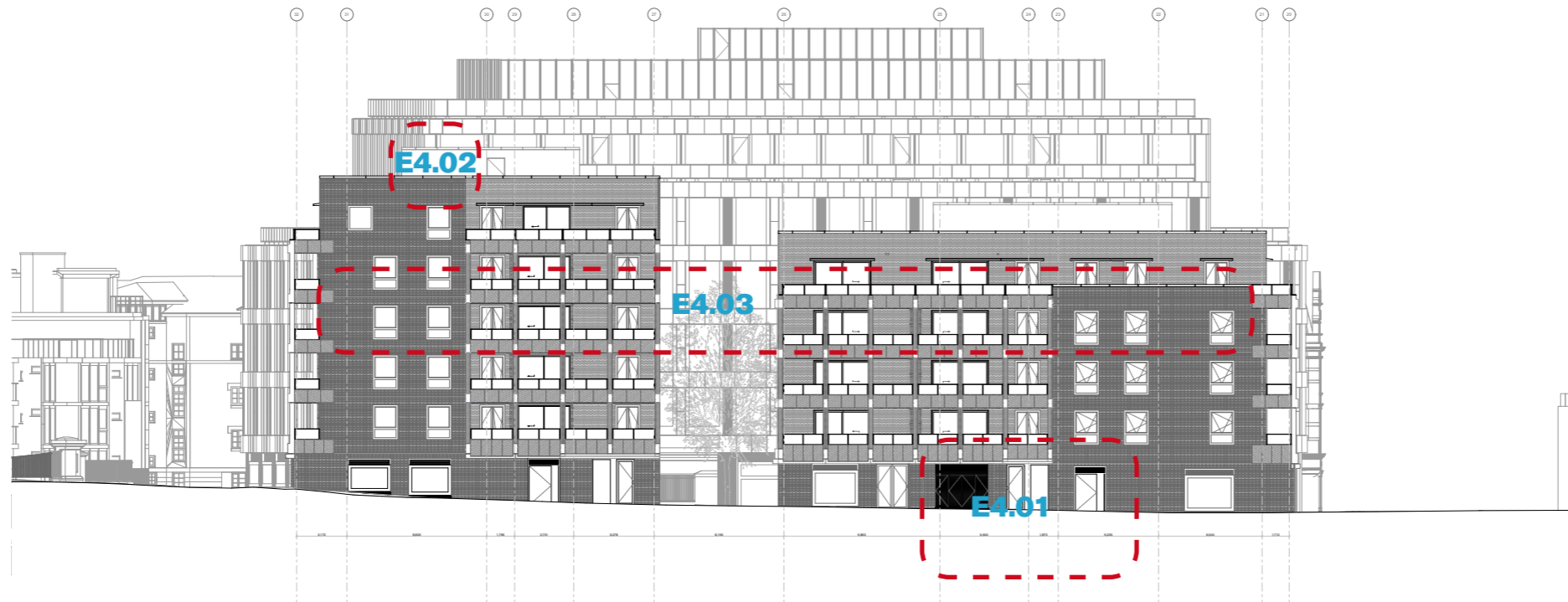
**E3.01 - Revised design for revolving doors.**

**E4.01 - Bin store moved, UKPN transformer room added**

**E4.02 - East wall of plant screen moved east by 1.5m to enclose plant equipment.**

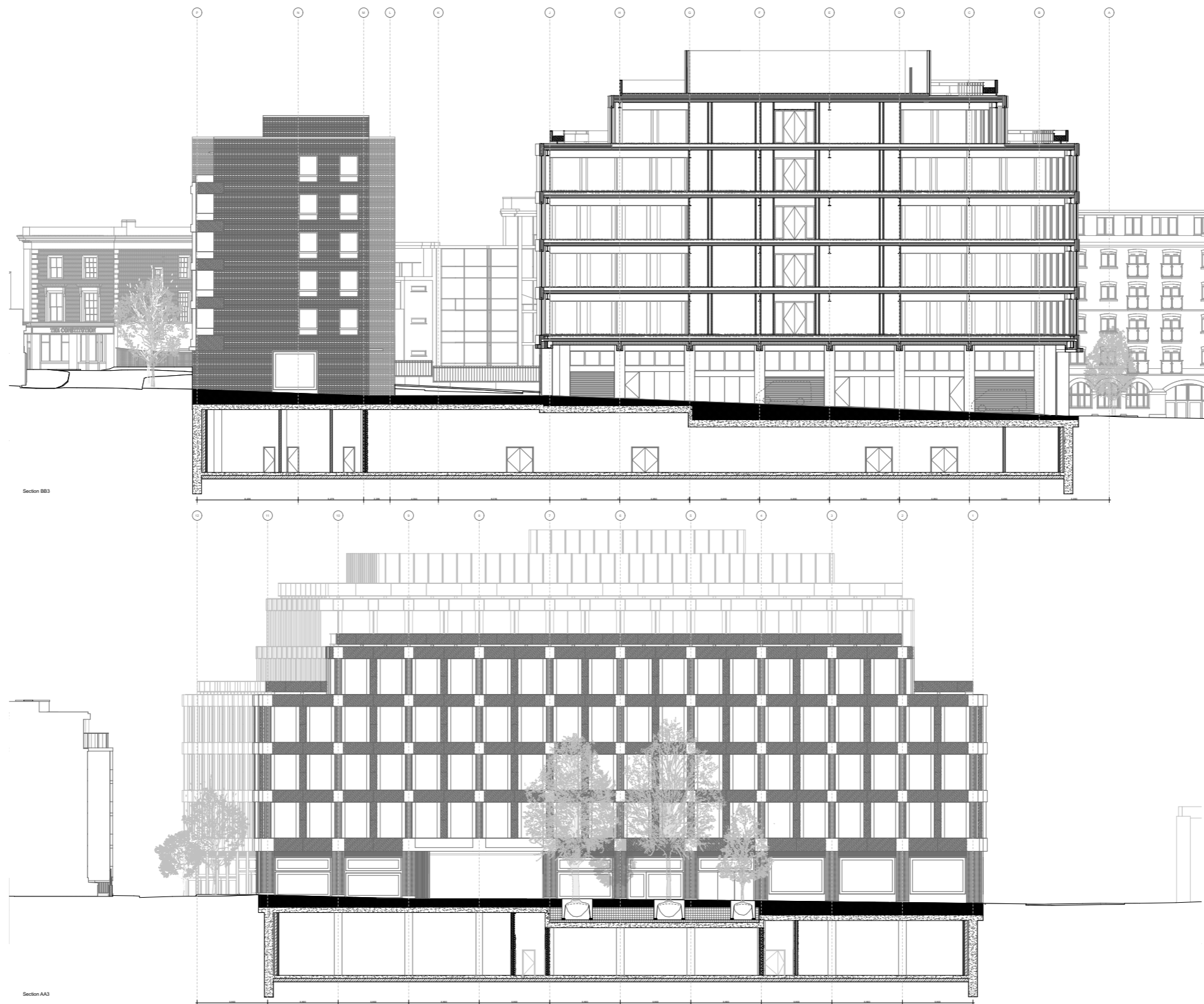
**E4.03 - Window heights reduced on floors 1-5 on both buildings on all elevations to incorporate lowered ceiling for sprinkler system.**

Elevation - Royal College Street



Elevation - Georgiana Street

Revised Royal Collage Street and Georgiana elevations, amendments marked in red



Section BB3

Section AA3

Sections BB3 & AA3 submitted in August 2019