

General notes:
 All dimensions are approximate and subject to a full measured survey
 All drawings to be read in conjunction with Structural Engineers and Services Engineers drawings. Any discrepancies are to be highlighted and brought to the attention of the Architects.







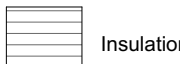





Health and safety notes:
Manual handling
 Avoid as far as reasonably practicable hazardous handling operations, including heavy lifting loads and working over shoulder height.

Confined space / Working at height
 Safe access to be provided when working at height.
 Be aware of restrictions placed on movement when working with temporary access equipment.

Temporary propping
 Care to be taken when fixing vertical elements to allow for secure fixing when fitting.

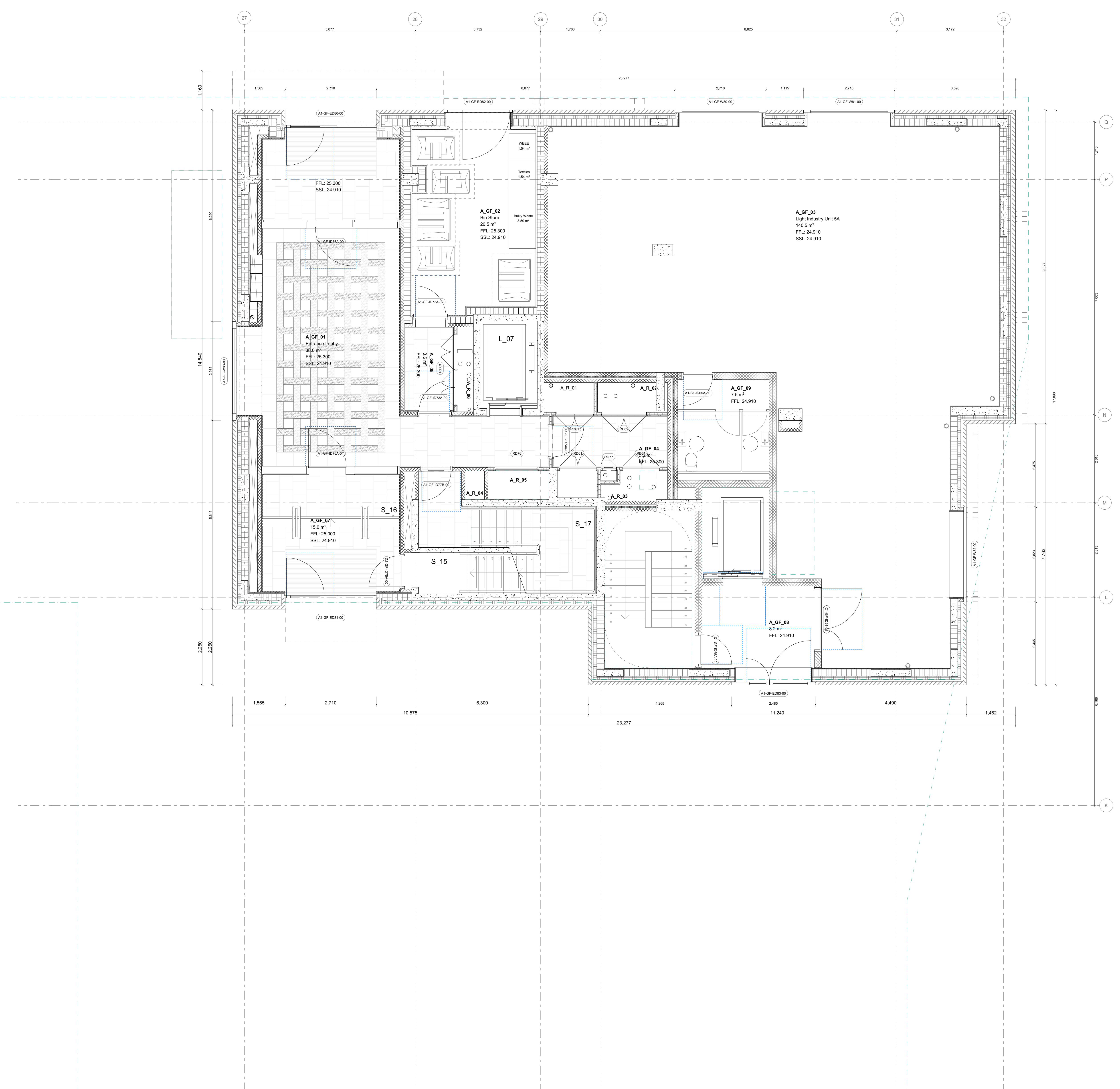
Personal protective equipment
 Appropriate equipment to be worn at all times while on site.

Material hatches:

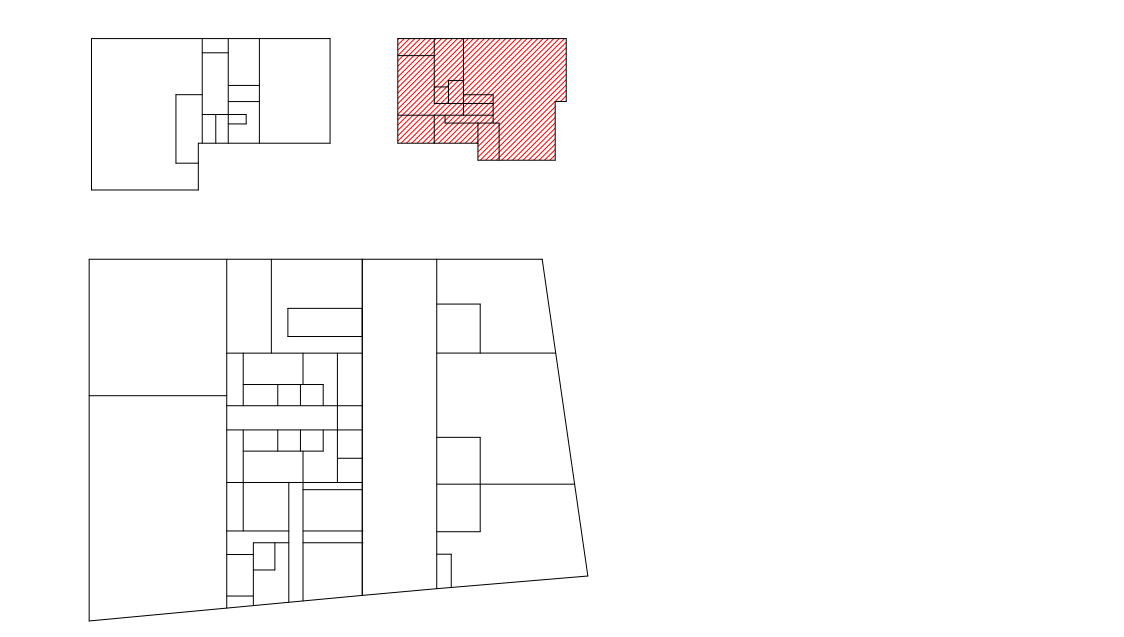
	Screed		Dropped Ceiling
	Blockwork		Brick
	Stone		Concrete, Precast
	Insulation, Soft		Concrete, In-situ
	Insulation, Rigid		Terracotta tiles
	Timber		Void former

Notes:

INDEX	DATE	REASON FOR ISSUE	NAME
T00	28/10/20	Stage 4 Tender	RK
T01	11/11/20	Stage 4 Tender	RK
T02	04/12/20	Tender Issue - Drawing Revision	RK
T03	14/12/20	Tender Issue - Drawing Revision	RK
T04	28/02/21	Stage 4 - VE Drawing Revision	RK
T05	17/05/21	Stage 4 - VE Drawing Revision	RK
T06	26/07/21	Planning revision	RK



Caruso St John Architects



477 St Pancras Commercial Centre

Affordable - Ground Floor Plan **PLANNING**

477	CSJ	A1	GF	FP	A	5001	S2	P00
Project No.	Location	Link	Level	Type	Discipline	Section	Issue	Revision
1:50	1189 x 841	26/10/20	06/07/21	RK	JH			
Scale	Sheet No. x Total	Date	Revised	Drawn	Checked			

STAGE 05 **±0.00 = 0.00 AOD**

Client:
 WRE
 8 Bishops Meads, London, W1D 3DH

Project manager:
 Blackburn & Co.
 No 1, Clink Street, London, SE1 9EG

Architect:
 Caruso St John Architects LLP
 1 Cowe Street, London E2 8AG, UK, +44 (0)20 7933 3161, london@carusostjohn.com

Planning consultant:
 Gerald Evans
 72 Redbank Street, London, W1G 8AY

Structural engineer:
 AKT II
 White Carter Factory 1 Old Street Yard London EC1Y 6AF

Building services:
 Norman Delaney Young
 1 Angel Court, London EC2R 7J4

Quantity surveyor:
 Expans
 Montpelier 5-23 Old Street London EC1Y 9RL

Registered Office: Caruso St John LLP is a limited liability partnership registered in England No. 03208818