

**General notes:**  
 All dimensions are approximate and subject to a full measured survey  
 All drawings to be read in conjunction with Structural Engineers and Services Engineers drawings. Any discrepancies are to be highlighted and brought to the attention of the Architects.

**Health and safety notes:**  
**Manual handling**  
 Avoid as far as reasonably practicable hazardous handling operations, including heavy lifting loads and working over shoulder height.

**Confined space / Working at height**  
 Safe access to be provided when working at height.  
 Be aware of restrictions placed on movement when working with temporary access equipment.

**Temporary propping**  
 Care to be taken when fixing vertical elements to allow for secure fixing when fitting.

**Personal protective equipment**  
 Appropriate equipment to be worn at all times while on site.

**Material hatches:**

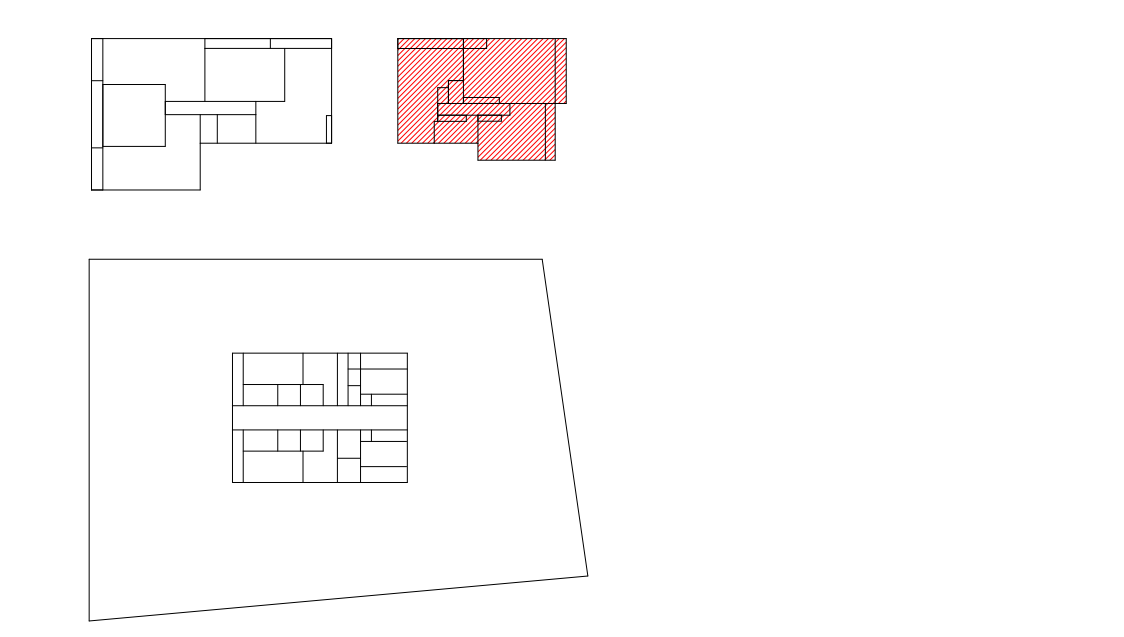
	Screed		Dropped Ceiling
	Blockwork		Brick
	Stone		Concrete, Precast
	Insulation, Soft		Concrete, In-situ
	Insulation, Rigid		Terracotta tiles
	Timber		Void former

**Notes:**

Apartment	Type	N/A
A_01_01	3B-SP MA(2)	77.21
A_01_02	3B-SP MA(2)	91.11
A_01_03	1B-SP MA(2)	54.12
		<b>222.44 m<sup>2</sup></b>

INDEX	DATE	REASON FOR ISSUE	NAME
T00	28/10/20	Stage 4 Tender	RK
T01	11/11/20	Stage 4 Tender	RK
T02	04/12/20	Tender Issue - Drawing Revision	RK
T03	14/12/20	Tender Issue - Drawing Revision	RK
T04	17/02/21	Stage 4 - VE Drawing Revision	RK
P00	06/07/21	Planning revision	RK

**Caruso St John Architects**



477 St Pancras Commercial Centre

Affordable - First Floor Plan PLANNING

477	CSJ	A1	01	FP	A	5002	S2	P00
Project No.	Author	Link	Level	Type	Discipline	Number	Issue	Revision
1:50	1189 x 841	26/10/20	06/07/21	RK	JH			
Scale	Sheet No. x Total	Date	Revised	Drawn	Checked			

**STAGE 05** ±0.00 = 0.00 AOD

Project name: 477 St Pancras Commercial Centre  
 Client: WRE, 8 Bedford Way, London, W1G 3DH  
 Project manager: Blackburn & Co, No 1, Clink Street, London, SE1 9EG  
 Architect: Caruso St John Architects LLP, 1 Cowie Street, London E2 8AG, UK, +44 (0)20 7933 3161, london@carusostjohn.com  
 Planning consultant: Gerald Evans, 72 Redbank Street, London, W1G 8AY  
 Structural engineer: AKT II, White Colver Factory 1 Old Street Yard London EC1Y 8AF  
 Building services: Norman Delany Young, 1 Angel Court, London EC2R 7HU  
 Quantity surveyor: Expens, Northway 5-23 Old Street London EC1Y 9RL  
 Registered Office: Caruso St John LLP is a limited liability partnership registered in England No. 03258819

