

General notes:
 All dimensions are approximate and subject to a full measured survey
 All drawings to be read in conjunction with Structural Engineers and Services Engineers drawings. Any discrepancies are to be highlighted and brought to the attention of the Architects.

Health and safety notes:
Manual handling
 Avoid as far as reasonably practicable hazardous handling operations, including heavy lifting loads and working over shoulder height.

Confined space / Working at height
 Safe access to be provided when working at height.
 Be aware of restrictions placed on movement when working with temporary access equipment.

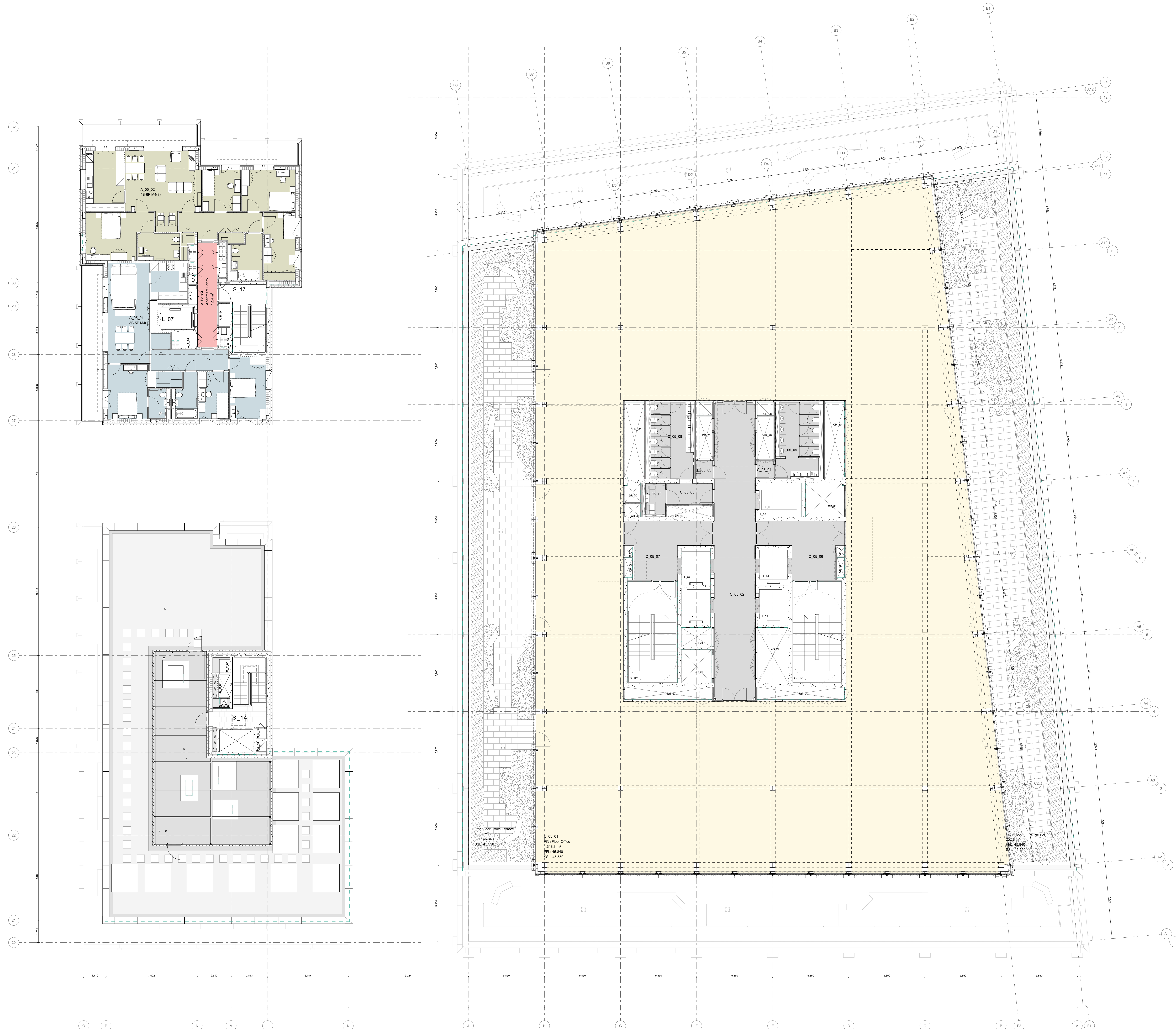
Temporary propping
 Care to be taken when fixing vertical elements to allow for secure fixing when fitting.

Personal protective equipment
 Appropriate equipment to be worn at all times while on site.

- Material hatches:**
- Screened
 - Blockwork
 - Stone
 - Insulation, Soft
 - Insulation, Rigid
 - Dropped Ceiling
 - Brick
 - Concrete, Precast
 - Concrete, In-situ
 - Steel

--- Slab edge

Notes:



| INDEX | DATE | REASON FOR ISSUE | NAME |
|-------|----------|-------------------------------|------|
| T05 | 26/10/20 | Stage 4 | RK |
| T06 | 11/11/20 | Stage 4 | RK |
| T07 | 04/12/20 | Stage 4 - Drawing Revision | RK |
| T08 | | Stage 4 - VE Drawing Revision | RK |
| T09 | 17/05/21 | Stage 4 - VE Drawing Revision | RK |
| P03 | 06/07/21 | Planning update | RK |

Caruso St John Architects

477 St Pancras Commercial Centre

General Arrangement - Plan - Fifth floor

| | | | | | | | | |
|-------------|----------------------|----------|----------|-------|------------|-------|-------|----------|
| 477 | CSJ | 00 | 05 | FP | A | 3108 | D2 | P03 |
| Project No. | Location | Line | Level | Type | Discipline | Sheet | Issue | Revision |
| 1:100 | 1189 x 841 | 01/02/20 | 06/07/21 | RK | JH | | | |
| Scale | Sheet No. (of total) | Date | Revised | Drawn | Checked | | | |

STAGE 04 ±0.00 = 0.00 AOD

Client:
 W H & A
 8 Bishops Walk, London, W1D 3DH

Project manager:
 Blackburn & Co.
 No 1, Clink Street, London, SE1 9DG

Architect:
 Caruso St John Architects LLP
 1 Cowie Street, London E2 8AG, UK, +44 (0)20 7933 3161, london@carusostjohn.com

Planning consultant:
 Gerald Evans
 72 Redwood Street, London, W1D 3AY

Structural engineer:
 AKT II
 White Carter Factory 1 Old Street Yard London EC1Y 6AF

Building services:
 Norman Delany Young
 1 Angel Court, London EC2R 7HA

Quantity surveyor:
 Expans
 Montpelier 5-23 Old Street London EC1Y 9NL

Registered Office: Caruso St John LLP is a limited liability partnership registered in England and Wales