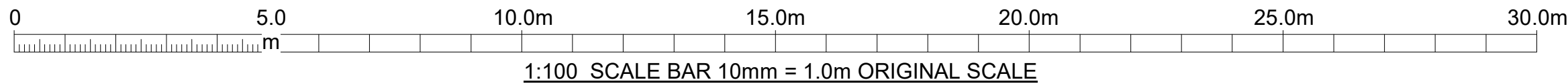
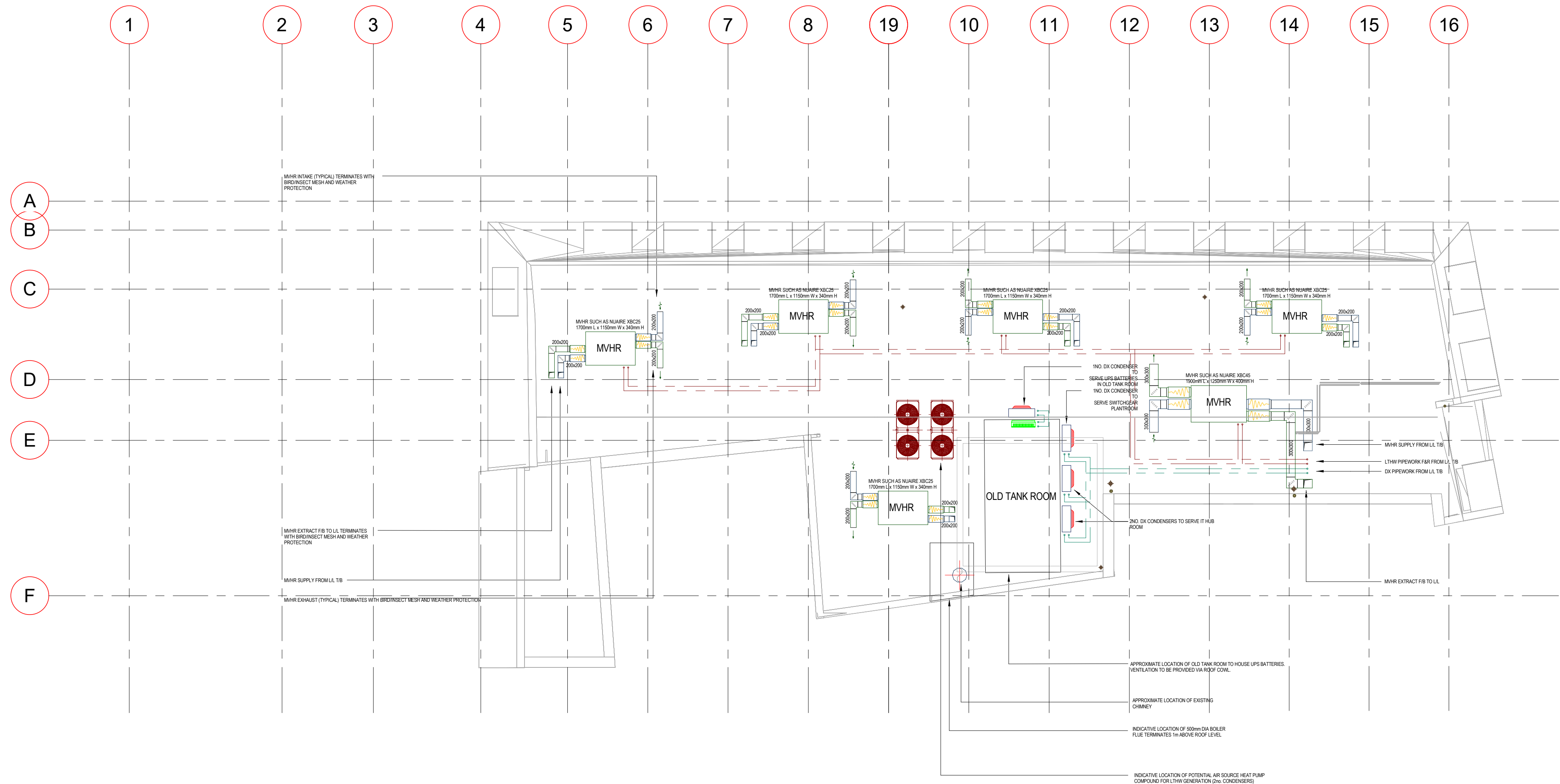


GENERAL NOTES

- DO NOT SCALE FROM THIS DRAWING
- THE CONTRACTOR MUST VERIFY ALL DIMENSIONS, TOLERANCES AND REFERENCES BEFORE PROCEEDING WITH WORKS
- ANY DISCREPANCY FOUND BETWEEN THIS DRAWING AND OTHER DOCUMENTS MUST BE REPORTED TO THE CONTRACT ADMINISTRATOR
- REMOVE THIS DRAWING FROM CURRENCY WHEN REVISED DRAWING IS ISSUED
- COPYRIGHT OF DESIGNS SHOWN ON THIS DRAWING REMAIN WITH ELEMENTA CONSULTING LTD.
- THIS DRAWING IS TO BE READ IN CONJUNCTION WITH THE SPECIFICATION AND ALL OTHER CONTRACT PROJECT DOCUMENTS
- THE CONTRACTOR SHALL REFER TO ARCHITECTS OR INTERIOR DESIGN DRAWINGS INCLUDING REFLECTED CEILING PLANS AND OTHER SPECIALIST DRAWINGS FOR SETTING OUT ALL VISIBLE WALL AND CEILING MOUNTED EQUIPMENT



A1 ORIGINAL SIZE DRAWING			
P02 STAGE 3 ISSUE		RW	29.06.21
P01 STAGE 3 ISSUE		RW	24.06.21
No.	REVISION	CHK	DATE

**ELEMENTA**

Oxford Design Studio
99 Park Drive, Milton Park
Oxfordshire, OX14 4RY

t: +44 (0)1235 820300
e: enquiries@elementaconsulting.com
www.elementaconsulting.com

CLIENT City Of London	
PROJECT City Of London Junior School	
TITLE Roof Planning Drawing	
DATE CREATED May '21	SCALE 1:100
DESIGNED MP	CHECKED ES
SUITABILITY CODE S2	SUITABILITY DESCRIPTION FOR INFORMATION
DRAWING STATUS STAGE 3	
DRAWING No. 510556-ELE-XX-RF-DR-MX-50002	REVISION P02