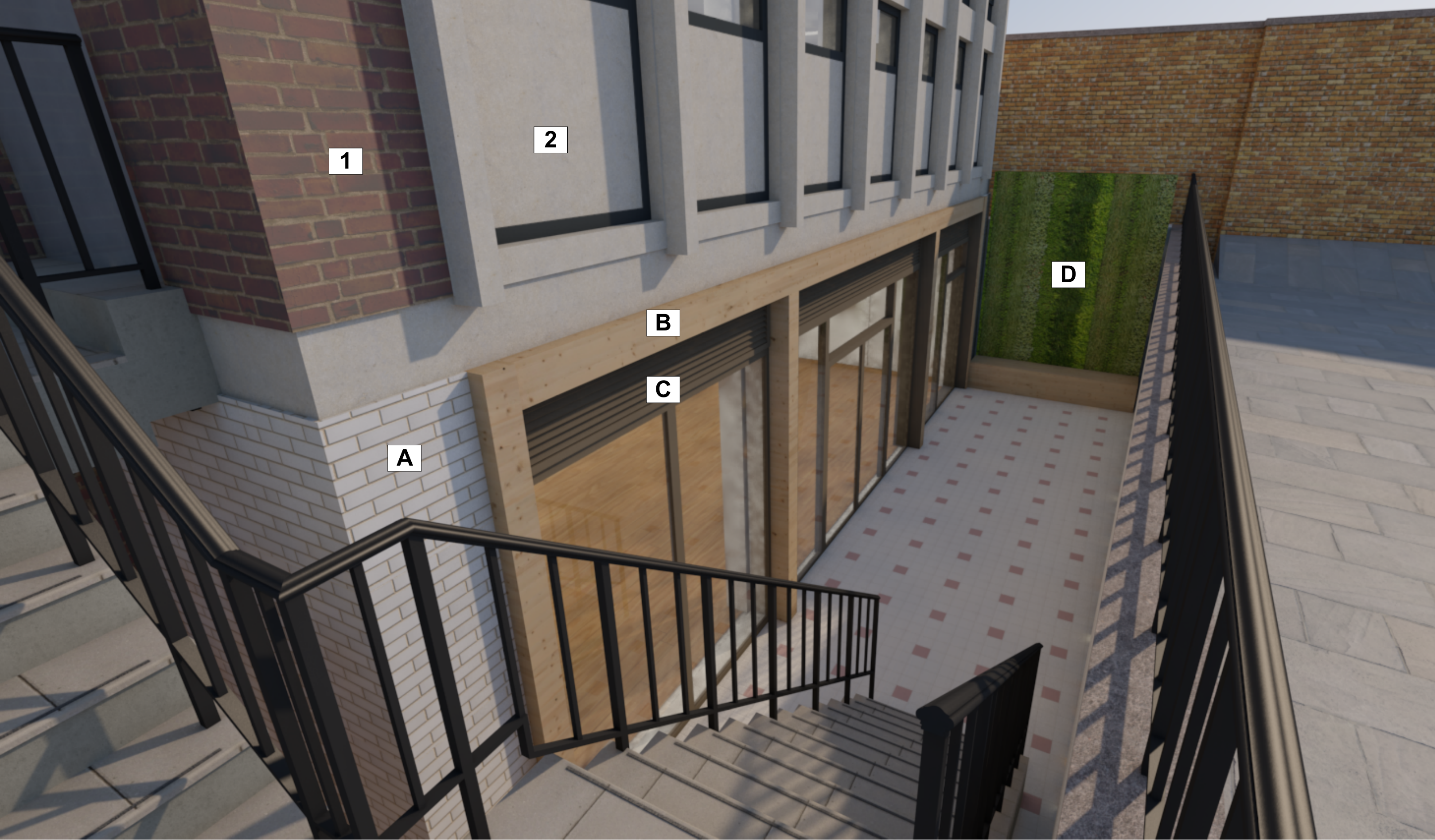




External Elevation



External Elevation

Existing Materials

1. Red brick with light coloured mortar
2. Concrete banding and panels under windows
3. Roof above west wing - copper roof
4. Roof above east wing - vertical tiles

Proposed Materials

- A. White glazed brick with buff mortar
- B. Timber framing around glazing
- C. Glazing frames bronze
- D. Green living wall