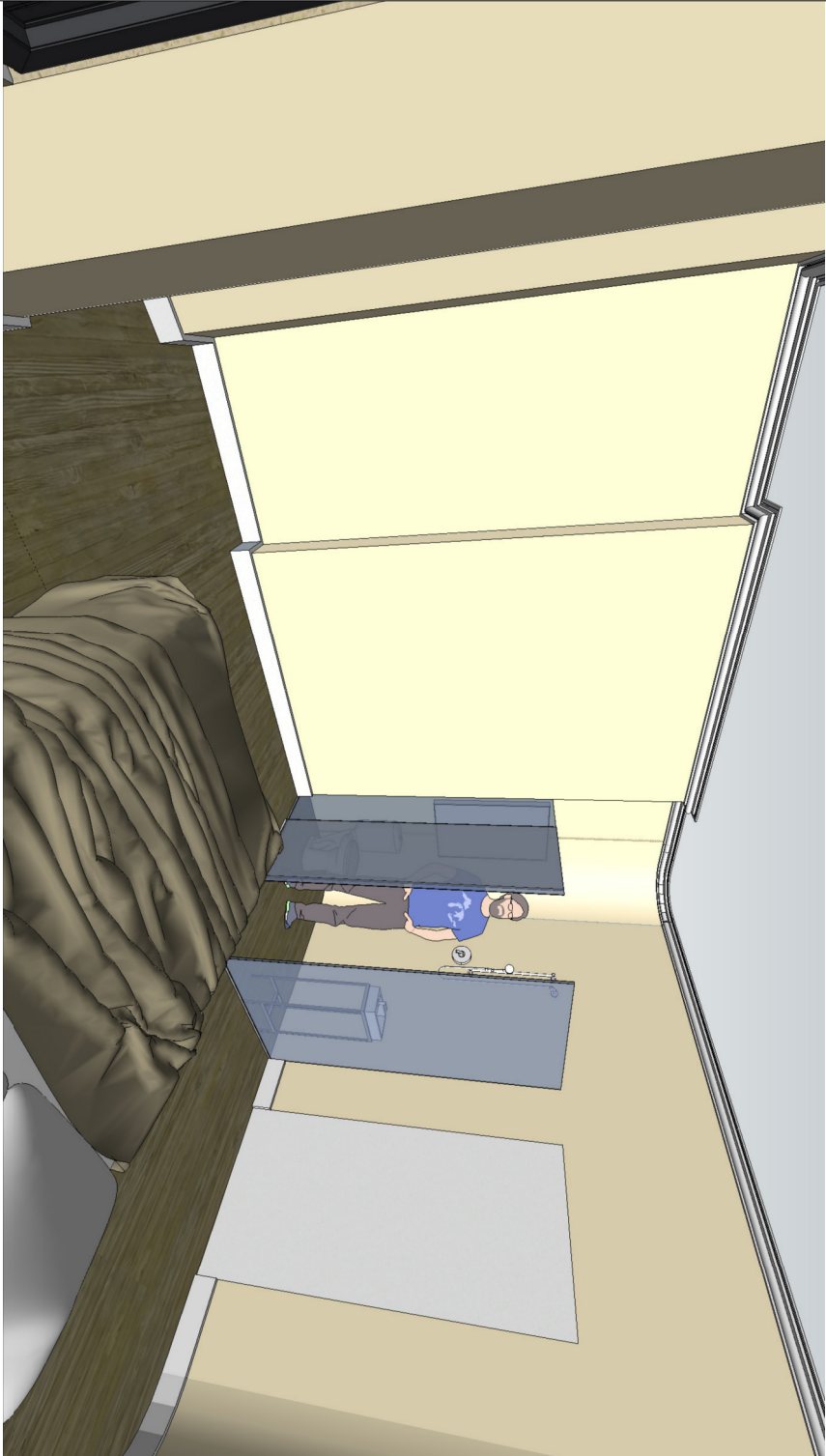
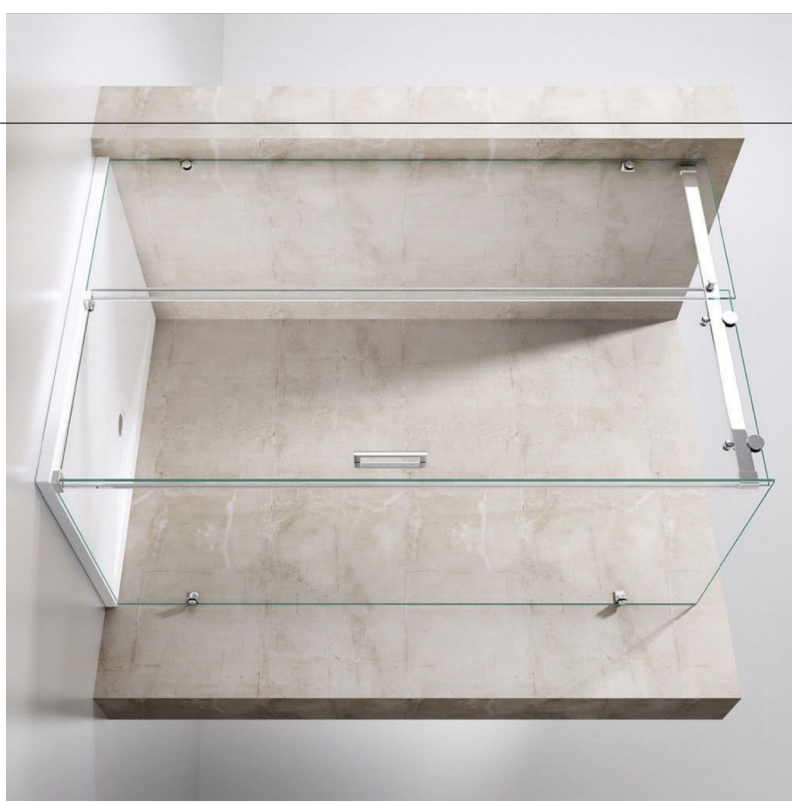




Photograph of Room 3 as shown on plan



3D Model of Room 3 with proposed typical en-suite shown



En-suite example



Wash basin and stand example



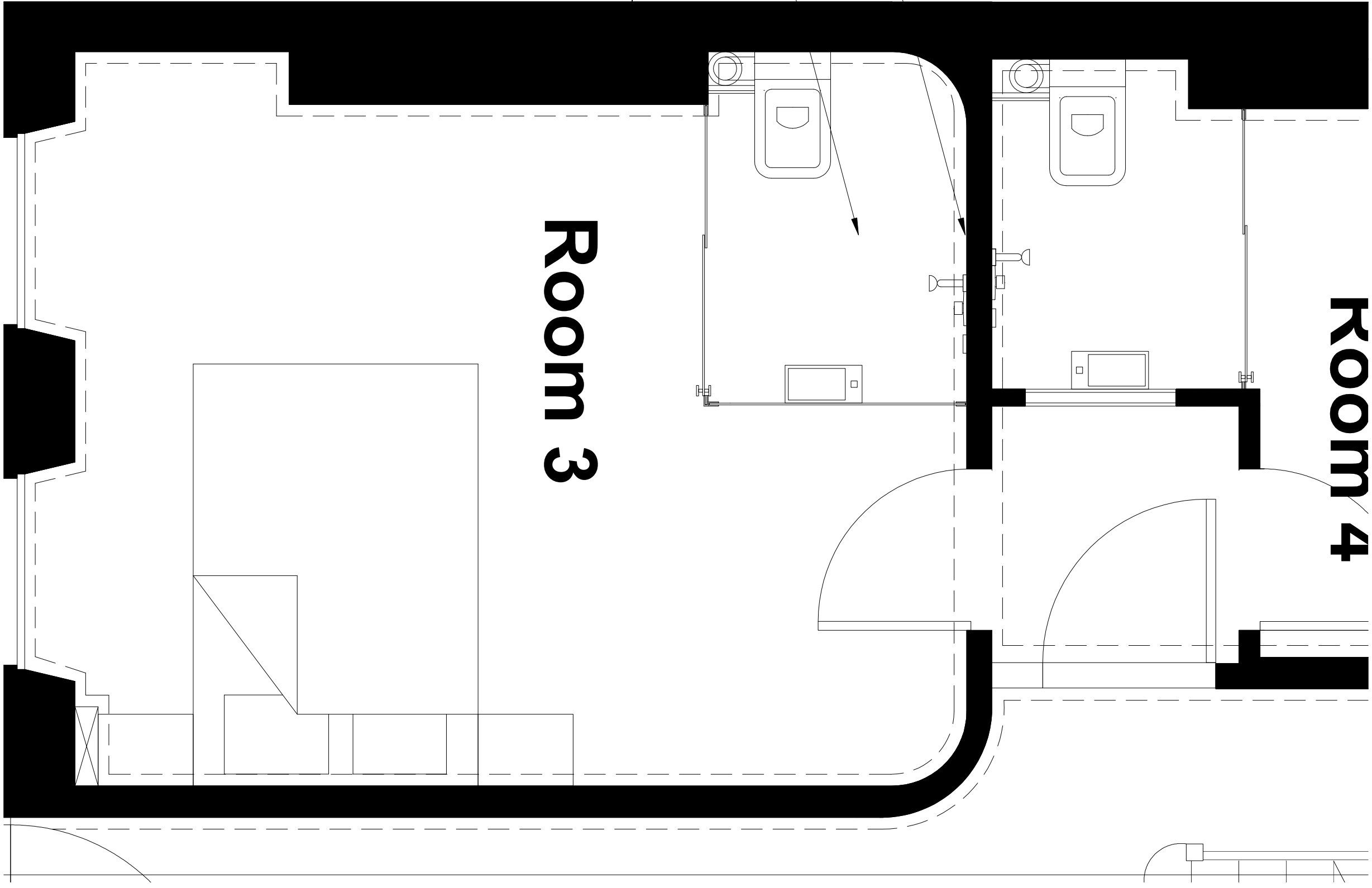
Toilet example



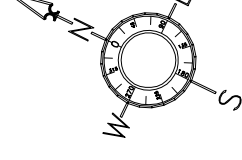
Wall to glass fixing
example, finish to be mirrored
stainless steel



Glass to glass fixing
example, finish to be mirrored
stainless steel



Proposed Ground Floor Plan



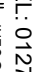
THIS DRAWING IS THE PROPERTY OF PATRICK HOWARD DESIGN ASSOCIATES, INC.
IT IS TO BE USED ONLY FOR THE PROJECT AND SITE SPECIFICALLY IDENTIFIED HEREON.
IT IS NOT TO BE REPRODUCED, COPIED, REPRODUCED, OR TRANSMITTED IN ANY FORM OR BY ANY MEANS, ELECTRONIC OR MECHANICAL, INCLUDING PHOTOCOPYING, RECORDING, OR BY ANY INFORMATION STORAGE AND RETRIEVAL SYSTEM, WITHOUT THE WRITTEN PERMISSION OF PATRICK HOWARD DESIGN ASSOCIATES, INC.
CONTRACTORS MUST VERIFY ALL DIMENSIONS ON SITE BEFORE SETTING OUT. COMMENCING WORK OR MAKING ANY SHOP DRAWINGS AND MUST NOT SCALE FROM COPIES WITHOUT VERIFICATION.

COPYRIGHT (C)

Rev.	Detail/Date/By
------	----------------

Rev.	Detail / Date / By

P.H.D. ASSOCIATES
BRAEMAR HOUSE
WATER LANE
STANTSED
ESSEX
CM24 8BU
TEL: 01279 817342
EMAIL: info@phdassociates.co.uk



The logo is circular with 'P.H.D.' in large bold letters in the center. Around the inner circle, the words 'ARCHITECTURE', 'SURVEYING', and 'TOWN PLANNING' are written. The logo is surrounded by a decorative border of small circles.

Project	Oxford House Hostel Tavistock Place, London WC1H 9RE
Drawing	En-suite moodboard

Date	08/07/2021
Drawn By	LJ/SHD
Scale	1 to 20 @ A1
Drawing Number	2105 LB MB

--	--	--	--	--