



DEMOLITION KEY

 PROPOSED DEMOLITION

 DEMOLITION

Lisa Shell
architects

EG2 Norway Wharf, 24 Hertford Road, N1 5QT
T. 020 7275 7773 E. mail@lisashellarchitects.co.uk

www.lisashellarchitects.co.uk

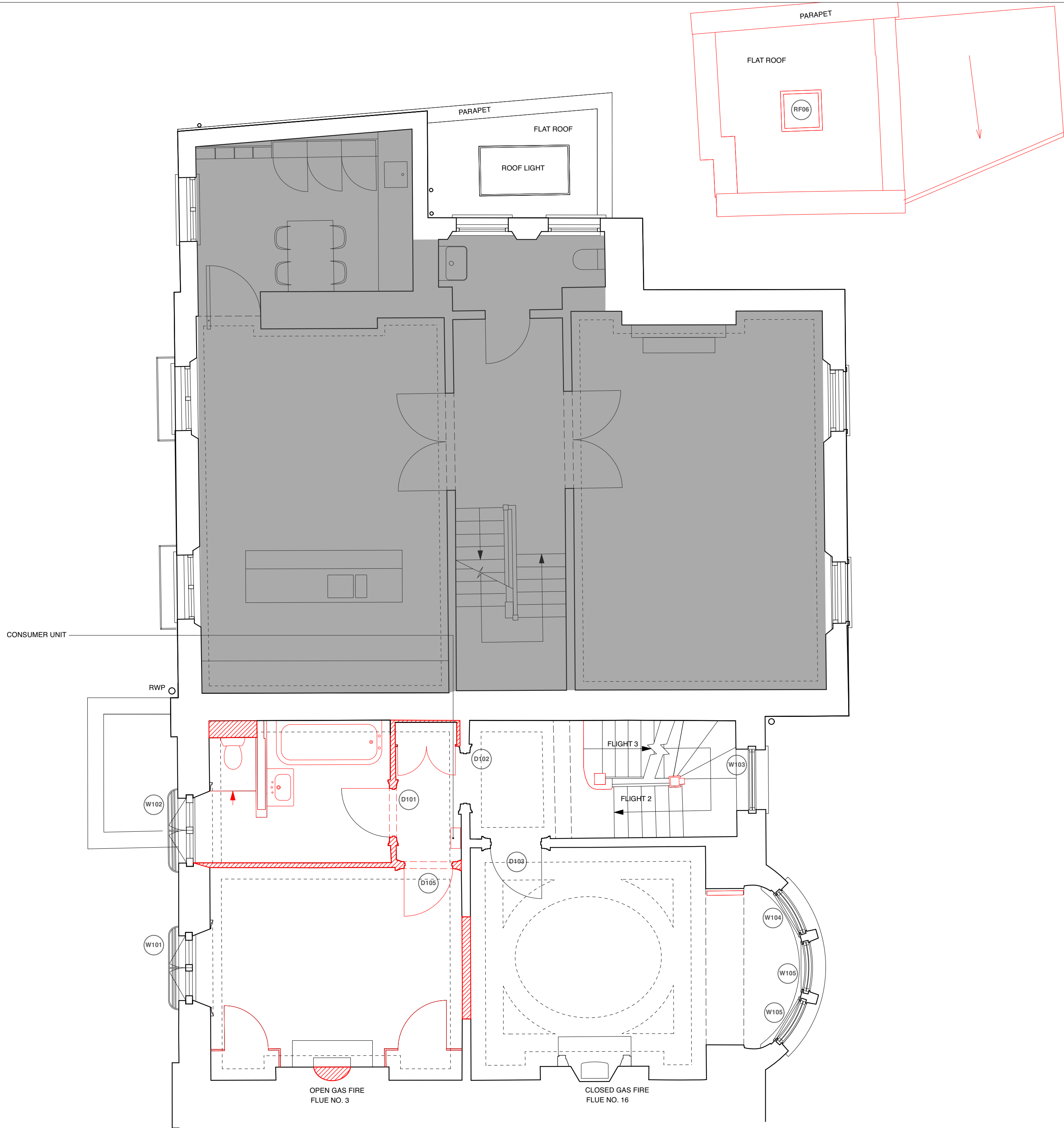
Director: Lisa Shell RIBA Registered in England No. 5000138
Registered office: Ross House, Stone-on-the-Water, Glos. GL24 1AF

**7 THE GROVE, HIGHGATE,
LONDON N6 6JU**

**GROUND FLOOR PLAN
PROPOSED DEMOLITION
GRO7 / D / 002 / A**
1:50 @ A2
REFER ALL DISCREPANCIES TO ARCHITECT

REVISIONS/ ISSUE

29/04/21
ISSUE TO ASBESTOS SPECIALIST
FOR INFO
09/07/21 A
ISSUE TO PLANNING
FOR APPROVAL



DEMOLITION KEY	
	PROPOSED DEMOLITION

Lisa Shell
architects

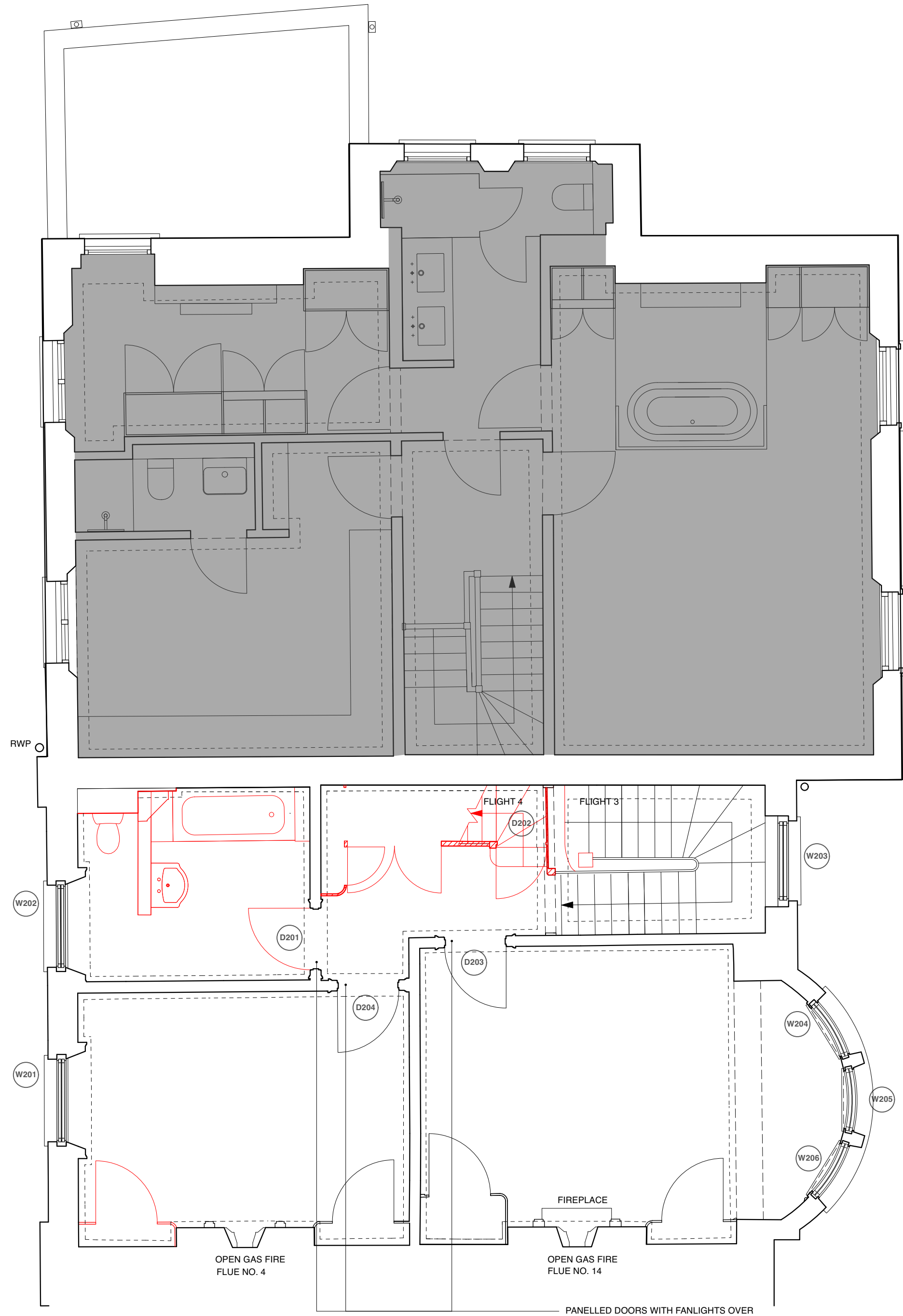
EG2 Norway Wharf, 24 Hertford Road, N1 5QT
T. 020 7275 7773 E. mail@lisashellarchitects.co.uk
www.lisashellarchitects.co.uk
Director: Lisa Shell RIBA Registered in England No. 5000138
Registered office: Ross House, Stone-on-the-Water, Glos. GL24 1AF

**7 THE GROVE, HIGHGATE,
LONDON N6 6JU**


**FIRST FLOOR PLAN
PROPOSED DEMOLITION
GRO7 / D / 003 / A**
1 : 50 @ A2
REFER ALL DISCREPANCIES TO ARCHITECT

REVISIONS/ ISSUE

29/04/21
ISSUE TO ASBESTOS SPECIALIST
FOR INFO
09/07/21 - A
ISSUE TO PLANNING
FOR APPROVAL



DEMOLITION KEY

 PROPOSED DEMOLITION

Lisa Shell
architects

EG2 Norway Wharf, 24 Hertford Road, N1 5QT
T. 020 7275 7773 E. mail@lisashellarchitects.co.uk

www.lisashellarchitects.co.uk

Director: Lisa Shell RIBA Registered in England No. 5000138
Registered office: Ross House, Stone-on-the-Water, Glos. GL24 1AF

**7 THE GROVE, HIGHGATE,
LONDON N6 6JU**

**SECOND FLOOR PLAN
PROPOSED DEMOLITION
GRO7 / D / 004**

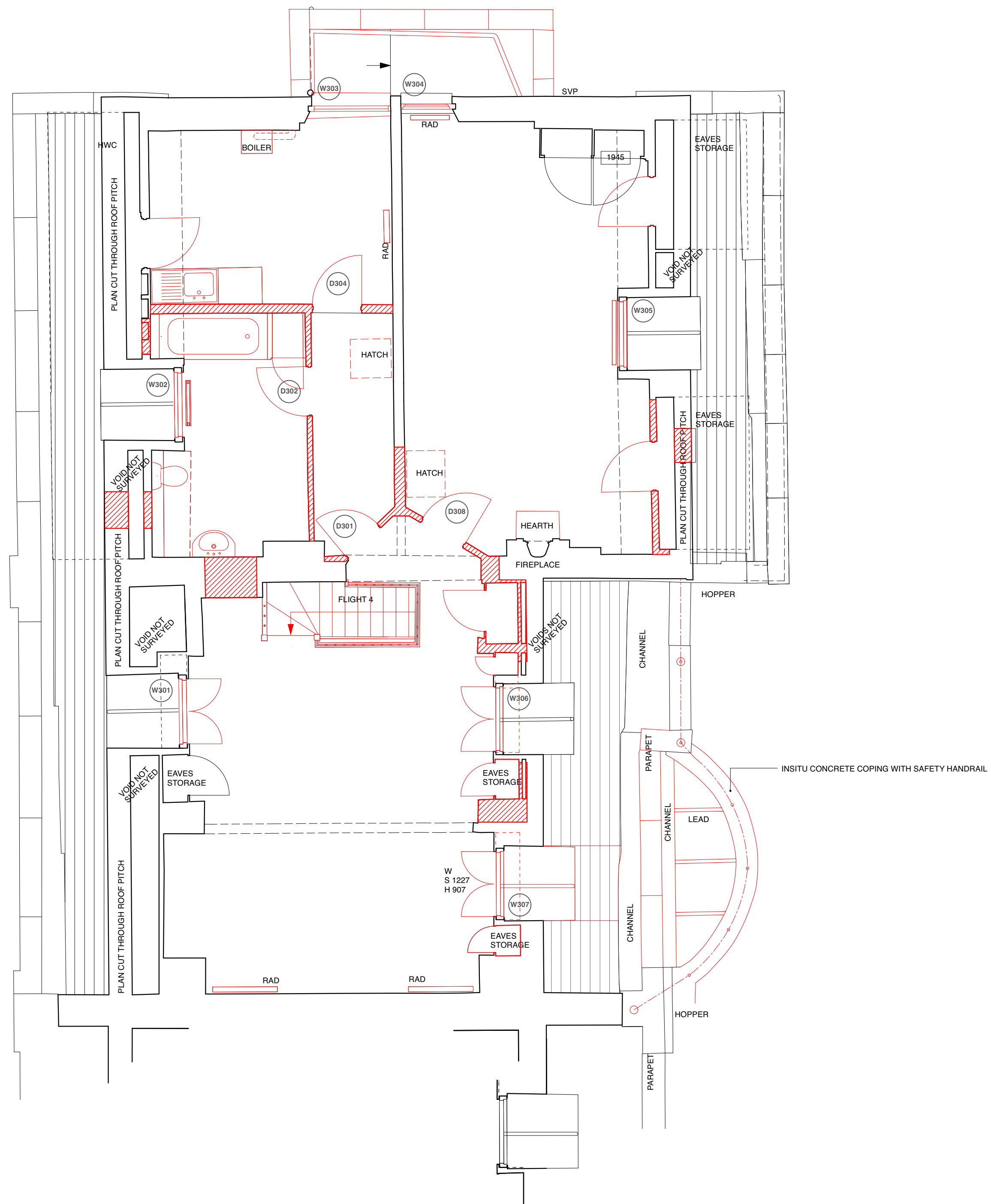
1:50 @ A2
REFER ALL DISCREPANCIES TO ARCHITECT



REVISIONS/ ISSUE

29/04/21
ISSUE TO ASBESTOS SPECIALIST
FOR INFO

NEW DRAWING REF
09/07/21
ISSUE TO PLANNING
FOR APPROVAL



DEMOLITION KEY	
	PROPOSED DEMOLITION

Lisa Shell
architects

EG2 Norway Wharf, 24 Hertford Road, N1 5QT
T. 020 7275 7773 E. mail@lisashellarchitects.co.uk
www.lisashellarchitects.co.uk

Director: Lisa Shell RIBA Registered in England No. 5000138
Registered office: Ross House, Stone-on-the-Water, Glos. GL24 1AF

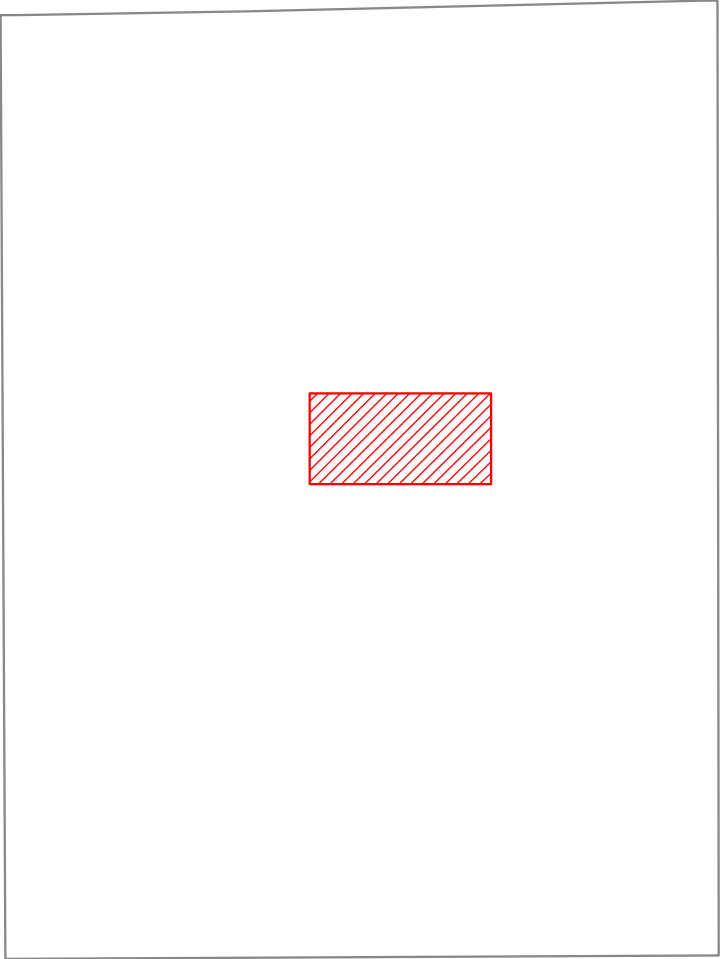
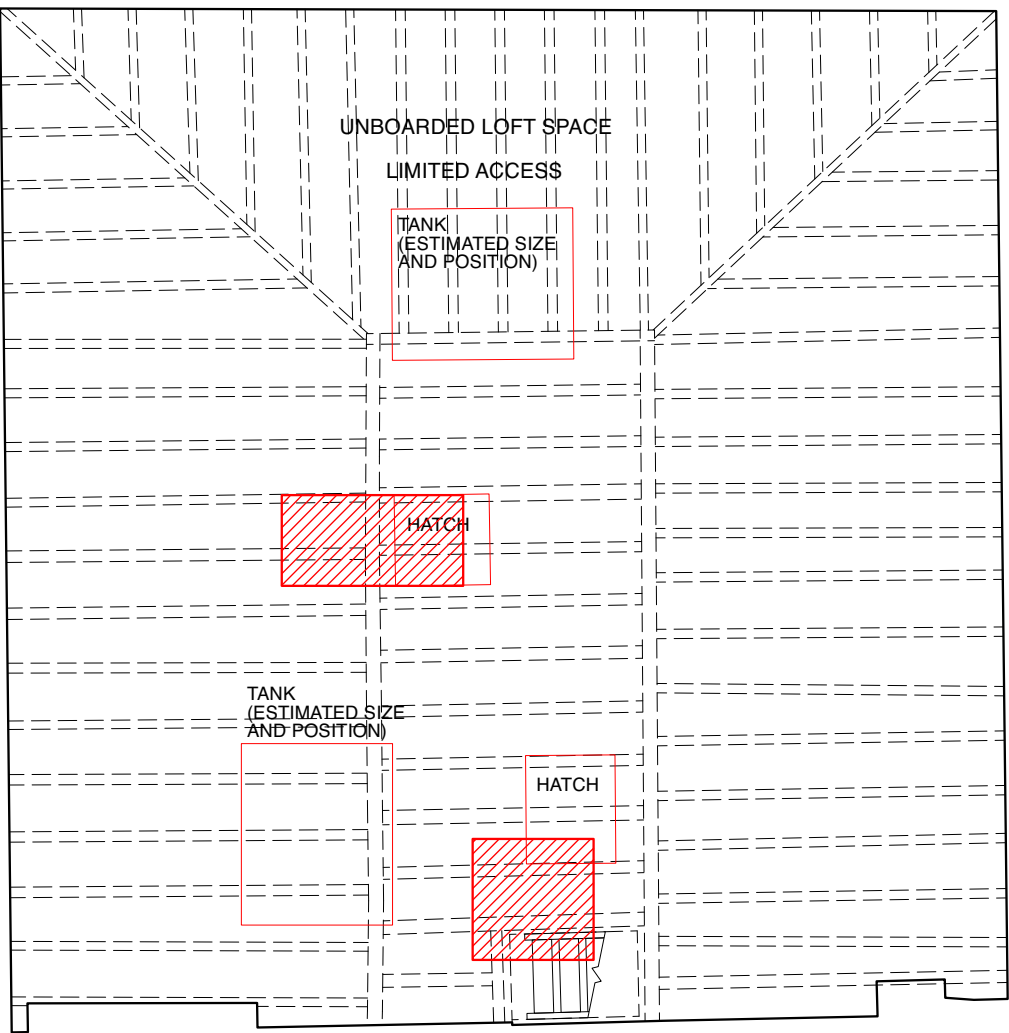
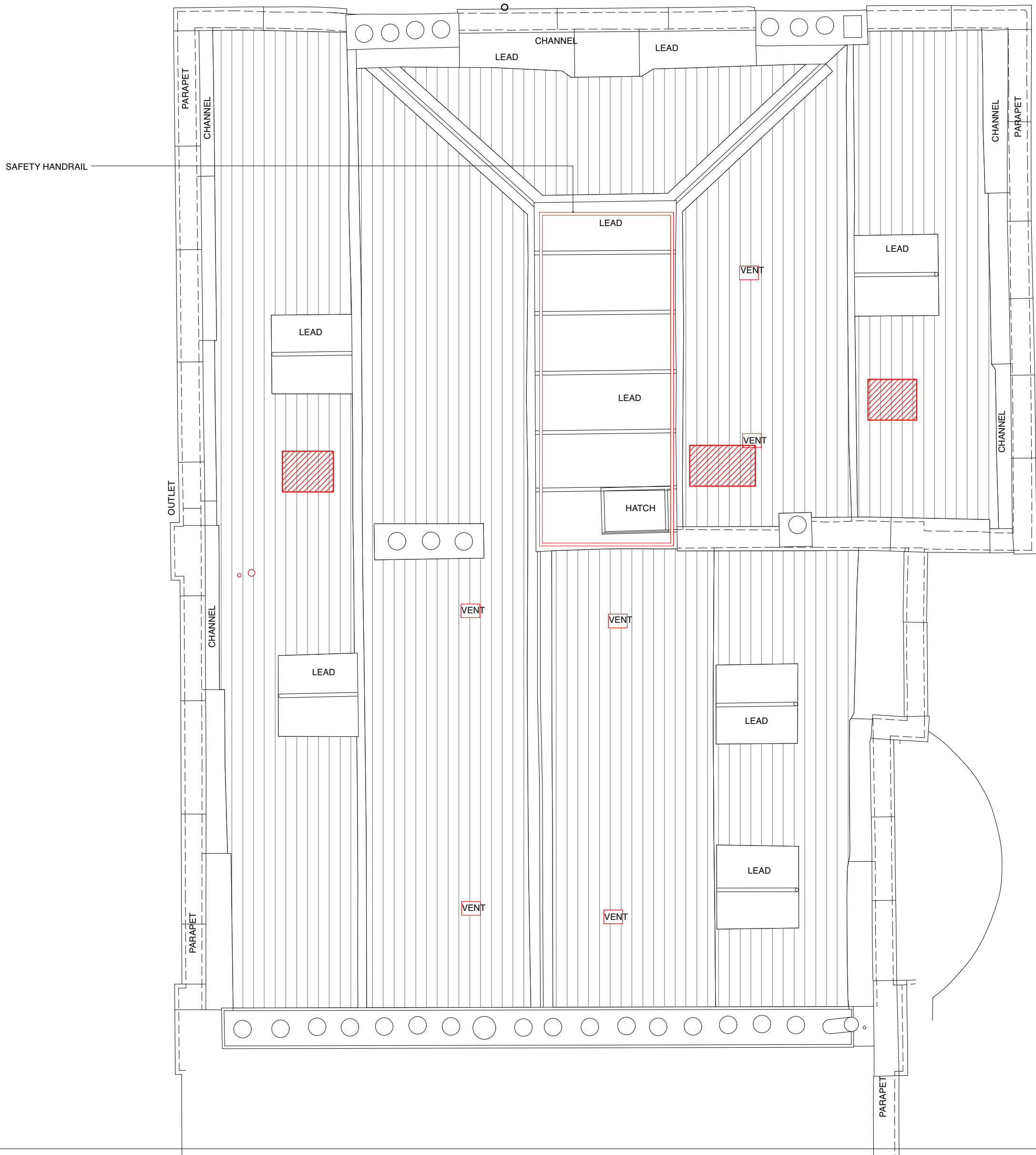
**7 THE GROVE, HIGHGATE,
LONDON N6 6JU**

**THIRD FLOOR PLAN
PROPOSED DEMOLITION
GRO7 / D / 005**
1:50 @ A2
REFER ALL DISCREPANCIES TO ARCHITECT

REVISIONS/ ISSUE

29/04/21
ISSUE TO ASBESTOS SPECIALIST
FOR INFO

NEW DRAWING REF
09/07/21
ISSUE TO PLANNING
FOR APPROVAL



DEMOLITION KEY	
	PROPOSED DEMOLITION

Lisa Shell
architects
EG2 Norway Wharf, 24 Hertford Road, N1 5QT
T. 020 7275 7773 E. mail@lisashellarchitects.co.uk
www.lisashellarchitects.co.uk
Director: Lisa Shell RIBA Registered in England No. 5000138
Registered office: Ross House, Stone-on-the-Water, Glos. GL24 1AF

**7 THE GROVE, HIGHGATE,
LONDON N6 6JU**

**LOFT & ROOF PLAN
PROPOSED DEMOLITION
GRO7 / D / 006**
1:50 @ A2
REFER ALL DISCREPANCIES TO ARCHITECT



REVISIONS/ ISSUE

29/04/21
ISSUE TO ASBESTOS SPECIALIST
FOR INFO

NEW DRAWING REF
09/07/21
ISSUE TO PLANNING
FOR APPROVAL