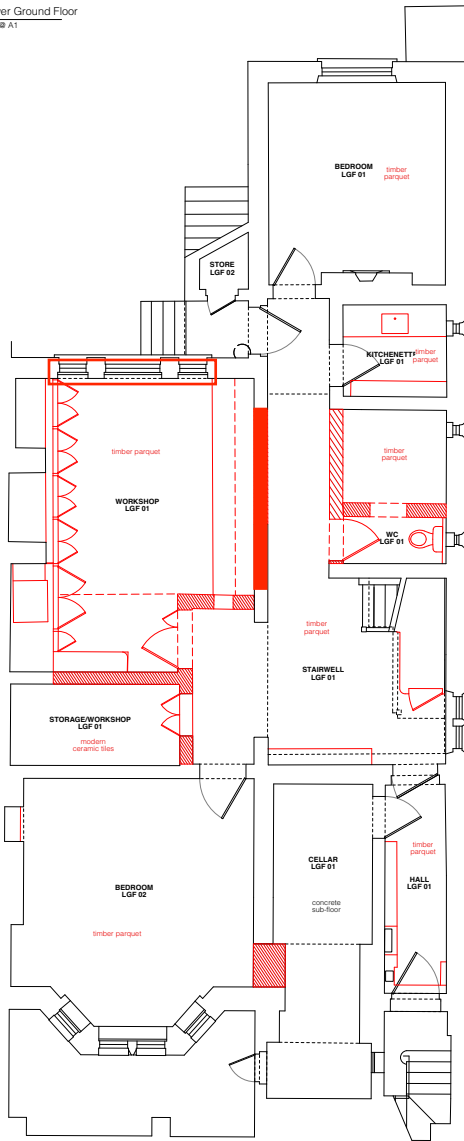


- Remove modern wooden window panels
- Location: Workshop LGF 01
- Remove timber parquet
  - Remove 20th century joinery
  - Remove wall between workshop LGF 01 & stairwell LGF 01
  - Remove false ceiling
  - New opening between workshop and stairwell to match width and height of adjacent opening opposite stairwell
  - Remove workshop wall

- Location: Storage/workshop LGF 01
- Remove modern ceramic tiles

- Location: Bedroom LGF 02
- Remove timber parquet
  - Remove modern shelves
  - Make new opening between bedroom LGF 02 & Cellar LGF 01



Location: Kitchenette LGF 01

- Remove timber parquet
- Remove all modern cupboards and kitchen fittings

Location: WC LGF 01

- Remove timber parquet
- Remove all sanitaryware
- Remove wall from 1m height upwards between WC LGF 01 & stairwell LGF 01
- New opening between workshop and WC to match height of opposite opening between workshop and stairwell

Location: Reception LGF 01

- Remove modern ceramic tiles
- Make new opening between reception LGF 01 & stairwell LGF 01 to provide access to new pantry & dining room
- Remove 20th century fireplace & front hearth

Location: Stairwell LGF 01

- Remove timber parquet
- Remove 20th century joinery under staircase
- Remove modern shelves

Location: Reception LGF 01

- Remove modern ceramic tiles
- Remove 20th century fireplace & front hearth
- Make new 3m opening between reception LGF 01 & LUGF 02

Location: Hall LGF 01

- Remove timber parquet
- Remove modern cupboards around services

Location: Study LUGF 01

- Remove 20th century joinery
- Remove 20th century fireplace & front hearth

Location: Bedroom 1F 02

- Make new opening between bedroom 1F 02 & stairwell 1F 01
- Remove 20th century joinery
- Remove 20th century fireplace & front hearth

Location: Study LUGF 02

- Remove modern ceramic tiles

Location: WC LUGF 01

- Remove modern ceramic tiles
- Remove 20th century joinery
- Remove all sanitaryware

Location: Stairwell LUGF 01

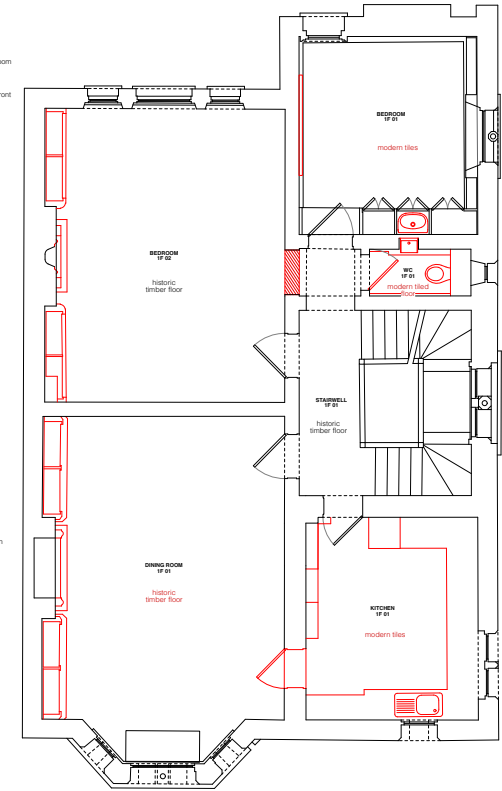
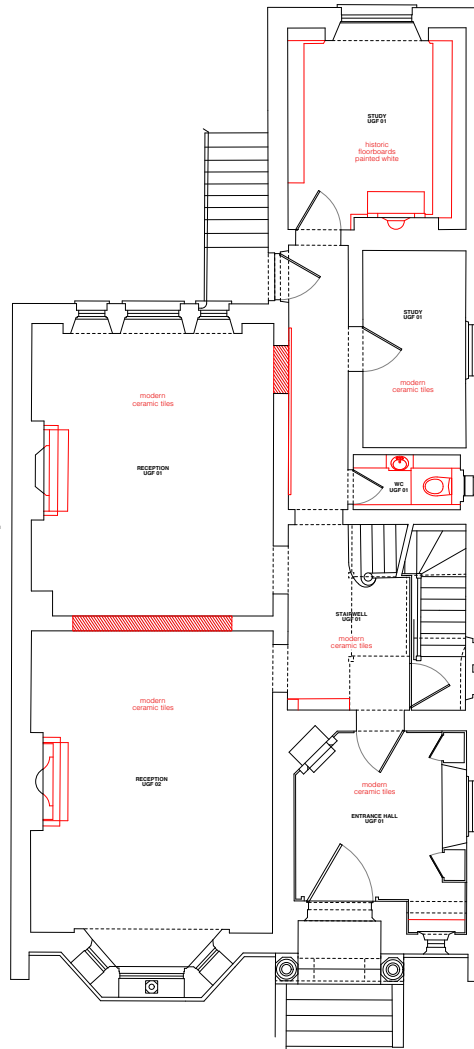
- Remove modern ceramic tiles
- Remove 20th century radiator housing
- Remove large 20th century mirror in passageway

Location: Dining Room 1F 01

- Remove door & architrave between dining room 1F 01 & kitchen 1F 01
- Remove 20th century joinery

Location: Entrance hall LUGF 01

- Remove modern ceramic tiles
- Remove 20th century radiator housing



Location: Study LUGF 02

- Remove modern ceramic tiles
- Remove 20th century basin, red cupboard and mirrors inside storage
- Remove large 20th century mirror

Location: WC 1F 01

- Remove all 20th century joinery
- Remove all sanitaryware
- Remove modern tiled floor

Location: Kitchen 1F 01

- Remove all 20th century kitchen units and kitchen fittings
- Remove modern ceramic tiles

© Drawing is copyright  
Do not scale. All dimensions to be checked on site.  
All construction, materials, workmanship etc to meet The National Building Regulations and Codes of Practice.  
All discrepancies within these drawings are to be immediately reported to Contract Administrator.  
No unilateral action to be taken by contractor.

Rev	Date	Description

Status: **PLANNING**

Scale bar 1:50 @ A1

0 1 2 3 m

Project: 52 OAKLEY SQUARE  
Drawing Title: LGF, UGF, 1F DEMOLITION PLANS

Scale: 1:50 @ A1  
1:100 @ A3  
Date: 2006

Drawing No: A050  
Date: 9 MAR 2021  
Revision: