

- Location: Workshop LGF 01
- Remove timber parquet
 - Remove 20th century joinery
 - Remove wall between workshop LGF 01 & stairwell LGF 01
 - Remove false ceiling
 - New opening between workshop and stairwell to match width and height of adjacent opening opposite stairwell.

- Location: Storage/workshop LGF 01
- Remove modern ceramic tiles

- Location: Bedroom LGF 02
- Remove timber parquet
 - Remove modern shelves
 - Make new opening between bedroom LGF 02 & Cellar LGF 01

- Location: Kitchenette LGF 01
- Remove timber parquet
 - Remove all modern cupboards and kitchen fittings

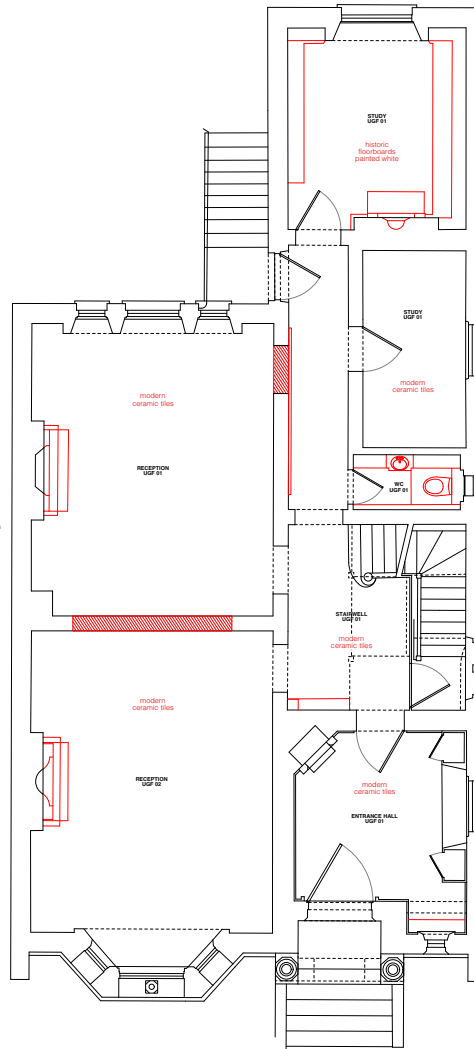
- Location: WC LGF 01
- Remove timber parquet
 - Remove all sanitaryware
 - Remove wall from 1m height upwards between WC LGF 01 & stairwell LGF 01
 - New opening between workshop and WC to match height of opposite opening between workshop and stairwell.

- Location: Reception LGF 01
- Remove modern ceramic tiles
 - Make new opening between reception LGF 01 & stairwell LGF 01 to provide access to new pantry & dining room
 - Remove 20th century fireplace & front hearth

- Location: Stairwell LGF 01
- Remove timber parquet
 - Remove 20th century joinery under staircase
 - Remove modern shelves

- Location: Reception UGF 01
- Remove modern ceramic tiles
 - Remove 20th century fireplace & front hearth
 - Make new 3m opening between reception LGF 01 & UGF 02

- Location: Hall LGF 01
- Remove timber parquet
 - Remove modern cupboards around services



- Location: Study UGF 01
- Remove 20th century joinery
 - Remove 20th century fireplace & front hearth

- Location: Bedroom 1F 02
- Make new opening between bedroom 1F 02 & stairwell 1F 01
 - Remove 20th century joinery
 - Remove 20th century fireplace & front hearth

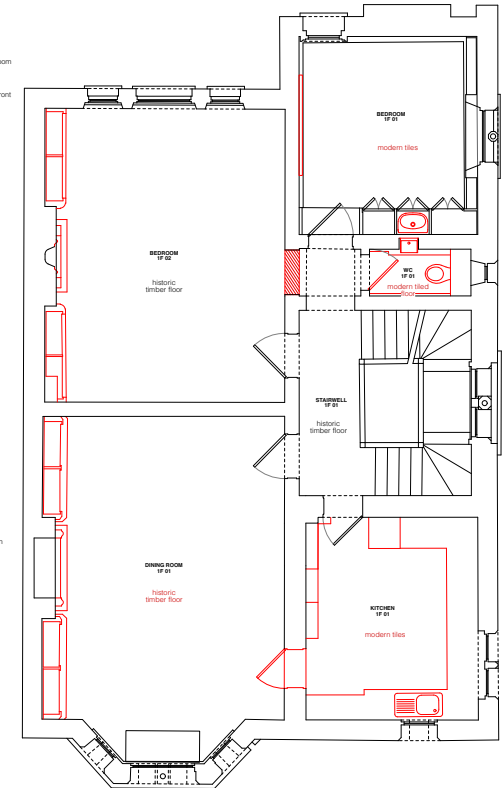
- Location: Study UGF 02
- Remove modern ceramic tiles

- Location: WC UGF 01
- Remove modern ceramic tiles
 - Remove 20th century joinery
 - Remove all sanitaryware

- Location: Stairwell UGF 01
- Remove modern ceramic tiles
 - Remove 20th century radiator housing
 - Remove large 20th century mirror in passageway

- Location: Dining Room 1F 01
- Remove door & architrave between dining room 1F 01 & kitchen 1F 01
 - Remove 20th century joinery

- Location: Entrance hall UGF 01
- Remove modern ceramic tiles
 - Remove 20th century radiator housing



- Location: Study UGF 02
- Remove modern ceramic tiles
 - Remove 20th century basin, red cupboard and mirrors inside storage
 - Remove large 20th century mirror

- Location: WC 1F 01
- Remove all 20th century joinery
 - Remove all sanitaryware
 - Remove modern tiled floor

- Location: Kitchen 1F 01
- Remove all 20th century kitchen units and kitchen fittings
 - Remove modern ceramic tiles

© Drawing is copyright
Do not scale. All dimensions to be checked on site.
All construction, materials, workmanship etc to meet The National Building Regulations and Codes of Practice.
All discrepancies within these drawings are to be immediately reported to Contract Administrator.
No unilateral action to be taken by contractor.

Rev	Date	Description

Status:
PLANNING

Scale bar 1:50 @ A1
0 1 2 3 m

Project:
52 OAKLEY SQUARE
Drawing Title:
LGF, UGF, 1F DEMOLITION PLANS

Scale:
1:50 @ A1
1:100 @ A3
Job No:
2006

Drawing No:
A050
Date:
9 MAR 2021
Revision: