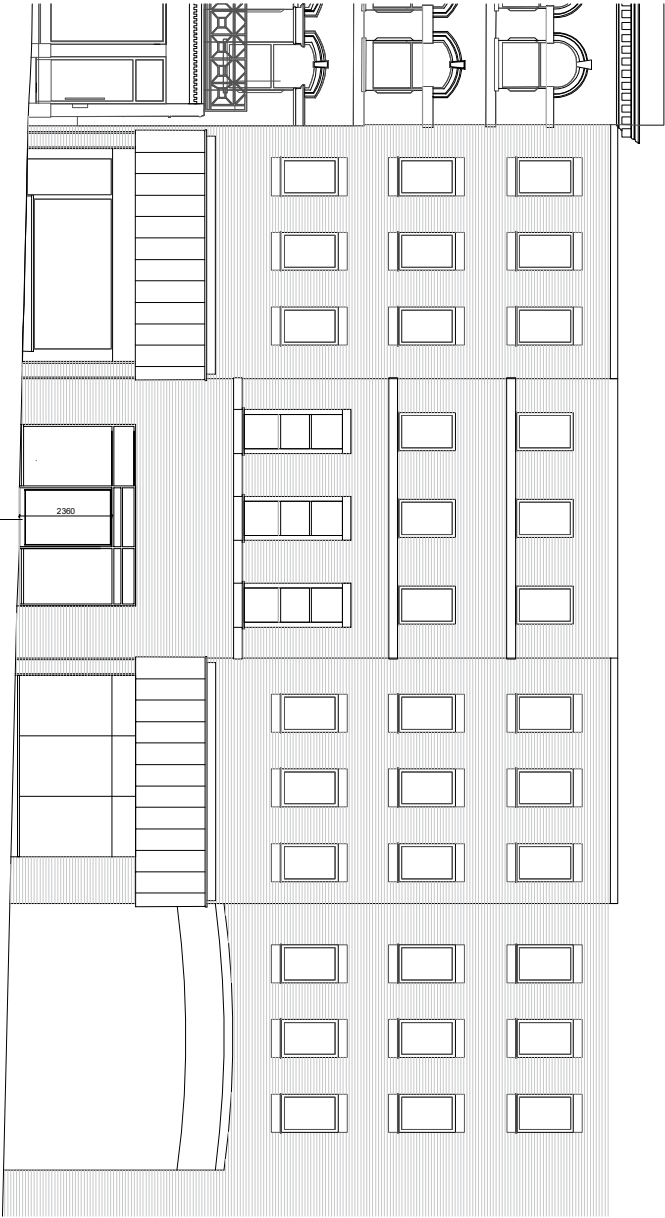
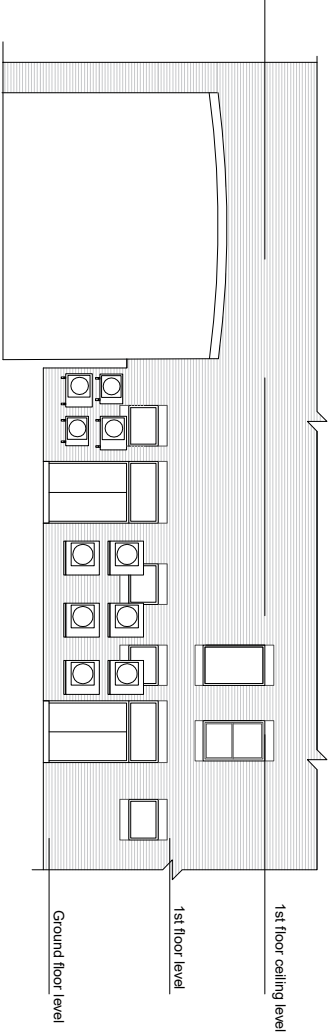


01  
EXISTING ELEVATION  
P186082205 1:200@A3

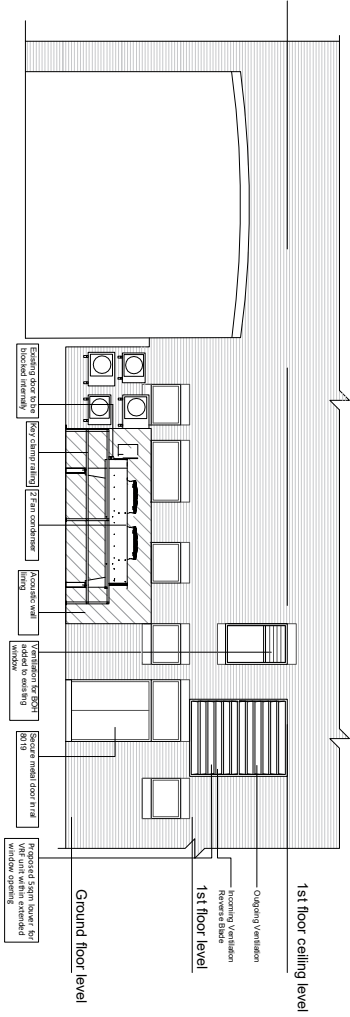


02  
PROPOSED ELEVATION  
P186082205 1:200@A3

Single sliding automatic door with finish as framework, fire, smoke and sound alarm with fireproof safety, battery failure; fire, safety beams; 1 no. multiprogrammable fire alarm system; 1 no. multiprogrammable key switch with five keys; door to fail-safe open in the event of fire alarm activation.



03  
EXISTING REAR ELEVATION  
P186082205 1:200@A3



04  
PROPOSED REAR ELEVATION  
P186082205 1:200@A3

ALL EXISTING A/C UNITS REMOVED FROM REAR WALL.



E	16.07.21	A/C splits retained	VA
D	07.07.21	Acoustic wall hatch amended	JN
C	29.06.21	General Amendments	JN
B	16.04.21	General Amendments	JN
A	24.03.21	Rear elevation	DH
—	23.03.21	First issue	JN
Rev.	Date	Description	

architects  
project managers  
cost consultants  
2nd Floor  
13 Swan Yard  
Islington, London  
N1 1JB  
Tel: 0203 837 9889  
**jla**

Status

Project Title  
**SANSBURY'S LOCAL  
HAMPTSTEAD, 35 HIGH STREET  
LONDON, NW3 1QE**

Drawing Title  
**EXISTING AND PROPOSED  
ELEVATIONS**

Project Number	Drawing Number	Revision	
S-186082	P-186082-205	E	
Drawn	Checked	Scale	Date
JN	VA	1:200@A3	23.03.21

JLA Architects is a trading name of Company Ltd, OC213166 registered in England and Wales, registered office: 13 Swan Yard, Islington, London, N1 1JB. Any reproduction of this drawing without the written permission of JLA Architects is prohibited. The content of this drawing is the property of the Company Ltd, OC213166.