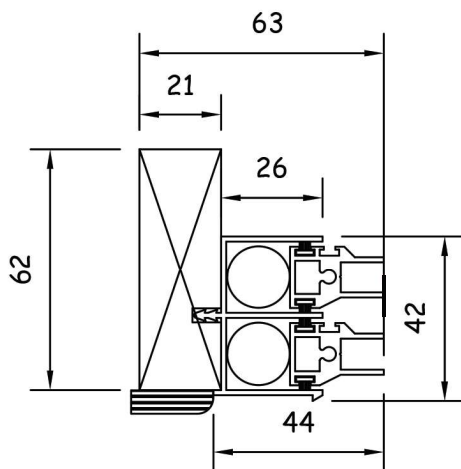
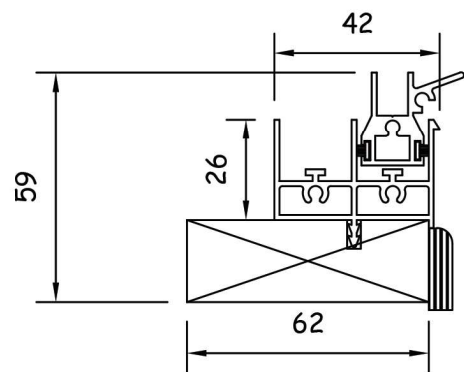
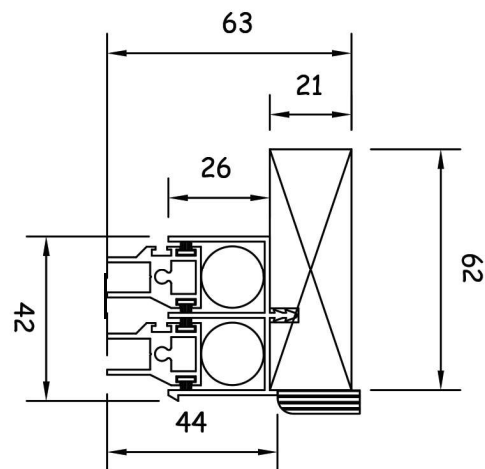


Section A-A



Section B-B



Optional Extras

Standard Product Specification:

Aluminium 6063T6 alloy to BS EN 755 standard, powder coated to BS 6496 to 60 micron finish.

Stock finish: White - Interpon SA 098E high gloss. The sub-frame is manufactured from primed high quality, environmentally certified (MTCS) engineered timber. Standard sizes: Reveal Fix: 62mm x 21mm & Face Fix: 45mm x 21mm.

All frames are factory glazed.

Standard gasket colour is black.

All frames include pvc-u trim as standard - Painted MDF or PEFC timber available upon request.

In line with our company policy of continuous product development and improvement, Granada reserves the right to make minor alterations to specification without notice.

- Locking fitch catch
- White gasket
- Aluminium coupling mullion
- Stacking interlock transom
- Trickle vents / acoustic trickle vents
- RAL colours
- Flyscreen
- Timber sizes other than standard available on request



Campbell Way
Dinnington
Sheffield
S25 3QD

Tel: 01909 499 899
W: www.granadaglazing.com

Type: Balanced Vertical Slider Reveal Fix

Reference: BVS

Rev. 1