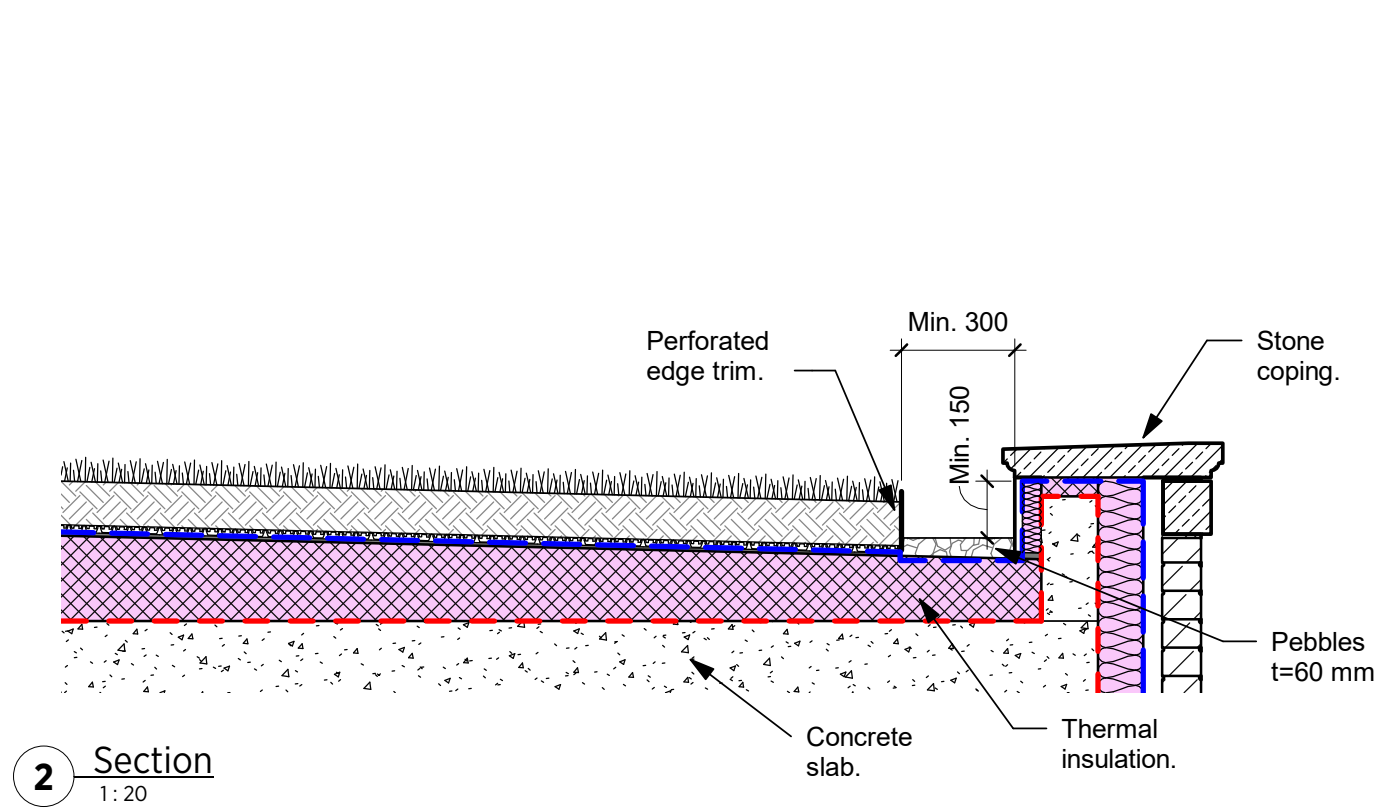


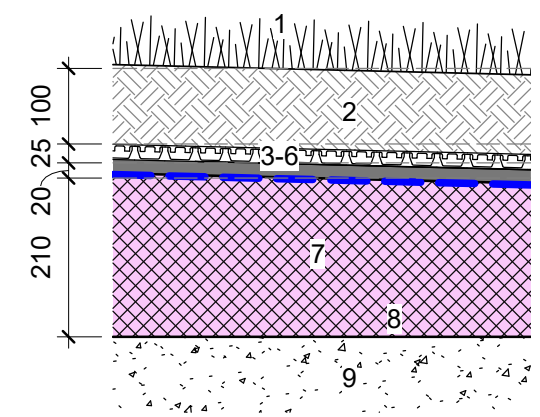
GENERAL NOTES:

This drawing is copyright of KSR architects. This drawing must be read in conjunction with the Designer's Risk Assessment, specification and all other relevant documentation and drawings. KSR architects accept no liability for any expense, loss or damage of whatsoever nature and however arising from any variation made to this drawing or in the execution of the work to which it relates which has not been referred to them and their approval obtained. Areas are based on unchecked survey and are approximate only. Do not scale from this drawing or the digital data, only figured dimensions are to be used. Refer to linear scale for guidance. Check all dimensions on site prior to carrying out any works and advise any discrepancy

Rev	Description	Date	By
-----	-------------	------	----



2 Section
1:20



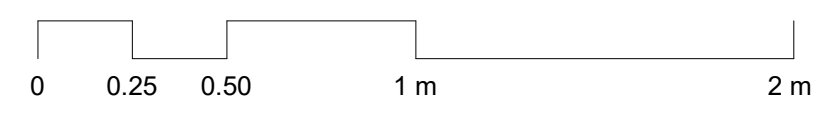
Green roof build-up

Description:
Extensive green roof on cut-to-falls insulation to concrete slab.

Location:
Refer to key plan.

- Layers:
1. 40 mm Bauder SB sedum blanket.
 2. 60 mm extensive substrate.
 3. 1mm filter fleece.
 4. 20 mm DSE 20 water retention and drainage layer.
 5. 4 mm FSM 600 protection layer.
 6. 20 mm Bauder waterproofing system.
 7. Avg. 210 mm cut-to-falls insulation.
 8. Vapour control layer.
 9. RC slab to SE details.

GRAPHIC SCALE 1:20



Status:

KSR ARCHITECTS & INTERIOR DESIGNERS
KSR Architects LLP mail@ksrarchitects.com
 14 Greenland Street t: +44 (0)20 7692 5000
 London NW1 0ND www.ksrarchitects.com

79 Avenue Road

Green roof detail

Date: 06/21/21 Scale:

Drawn By: Author Checked By: Checker

Drawing No: **19004-SK-070** Rev: