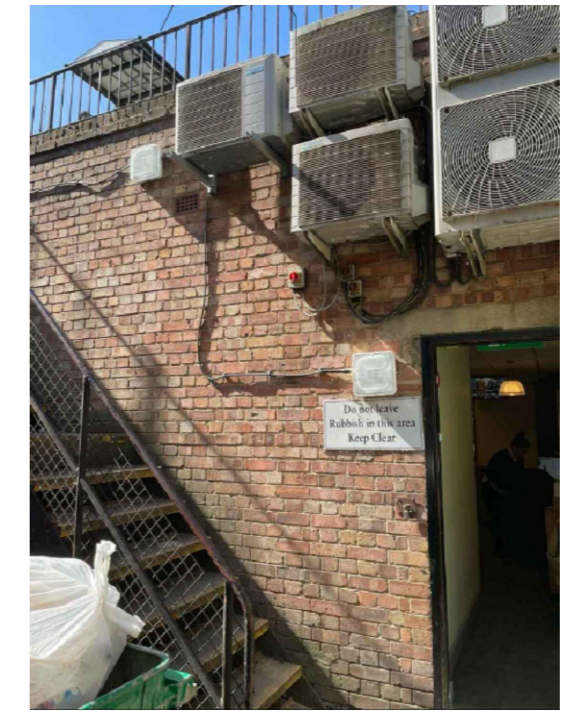
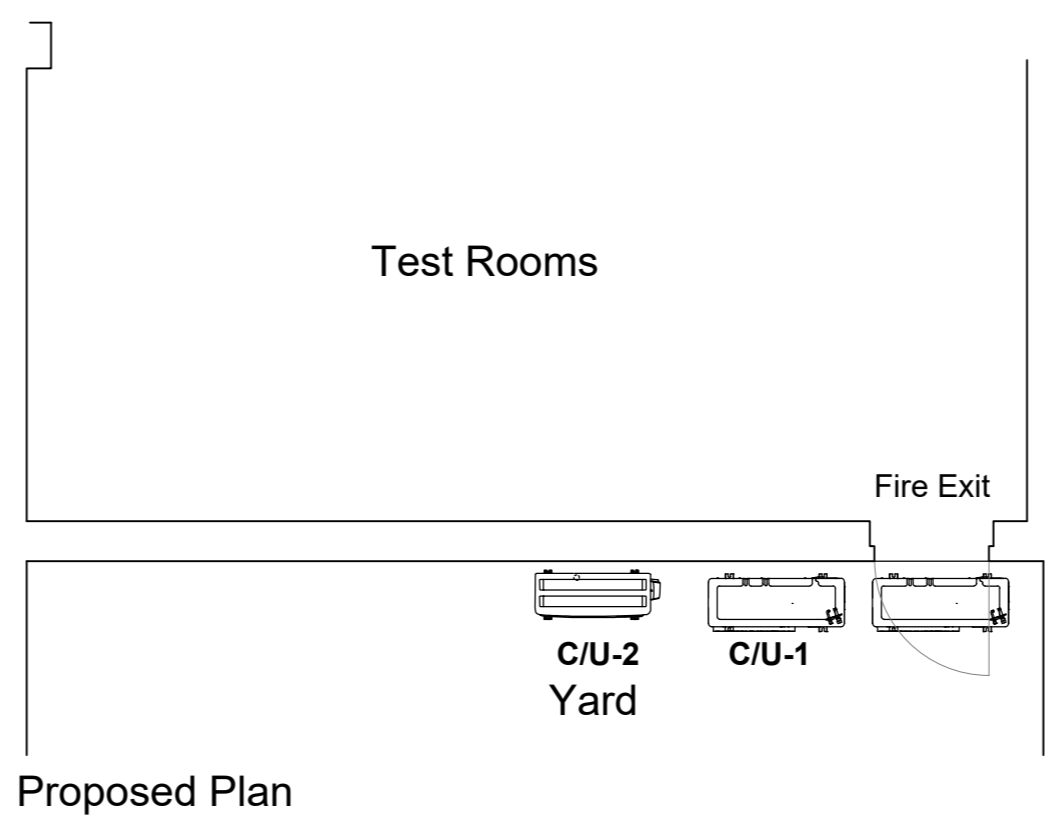
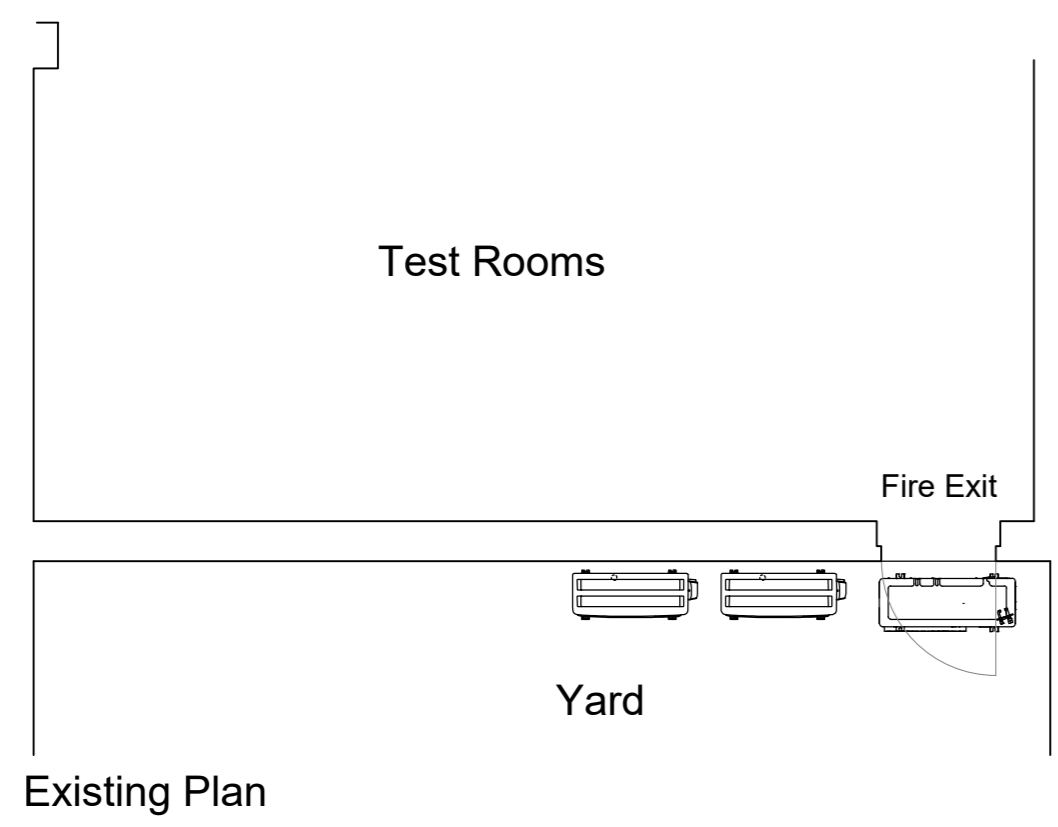


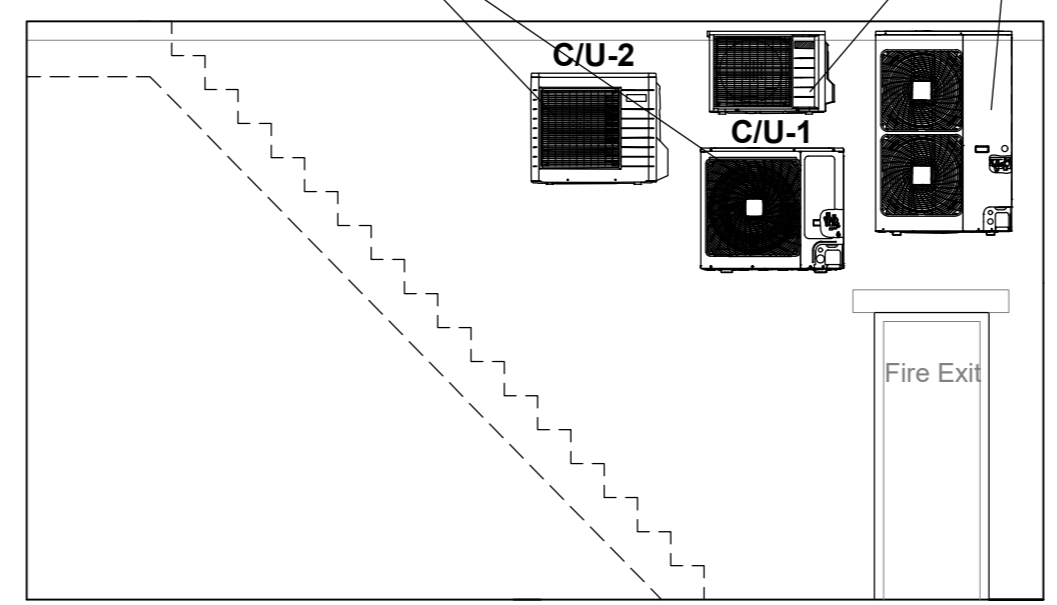
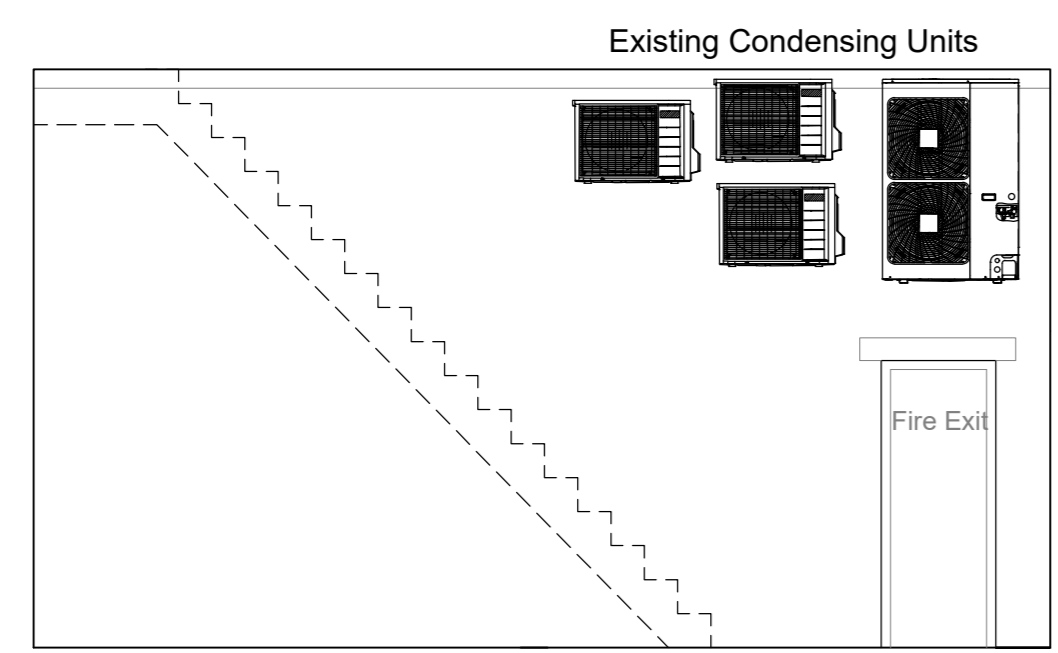
this drawing remains the property of fisch design limited and duplication of this drawing in whole or any part is strictly forbidden without prior written permission from fisch design ltd

all structural alterations are to be approved by a structural engineer



New proposed condensing units C/U-1,2 to be mounted at High Level. mounted on counter lever brackets rawbolted to wall Pipe Work and Cables Mounted on Cable Tray Next To Existing

Existing Condensing Units To Remain



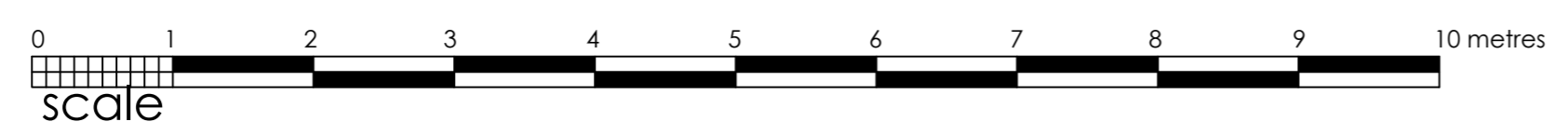
Proposed Air Conditioning Shedule

C/U-1
Daikin RXM-60
Dimensions H990 x W940x D320
Weight 55kg
Max Fuse size 16amp
Sound Pressure 43dba

C/U-2
Daikin RXYSCQ5TV1
Dimensions H823 x W940 x D460
Weight 89kg
Max Fuse size 32amp
Sound Pressure 51dba

Existing Rear Elevation

Proposed Rear Elevation



DWG NO: 1880-01	REVISION: -
CLIENT: Specsavers	
PROJECT: 116 Kilburn High Road North Maida Vale London NW6 4HY	
TITLE: AC Details	
ORIGIN: EB	CHECKED: -
SCALE: 1:50@A2	DATE: 01/07/21
fisch STRUCTURED CREATIVITY	FISCH DESIGN LTD 3 HERITAGE BUSINESS CENTRE DERBY ROAD, BELPER DERBYSHIRE, DE56 1SW
+44 (0)1773 828222 / WWW.FISCHDESIGN.CO.UK / MAIL@FISCHDESIGN.CO.UK	