
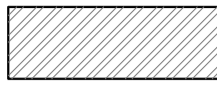
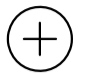



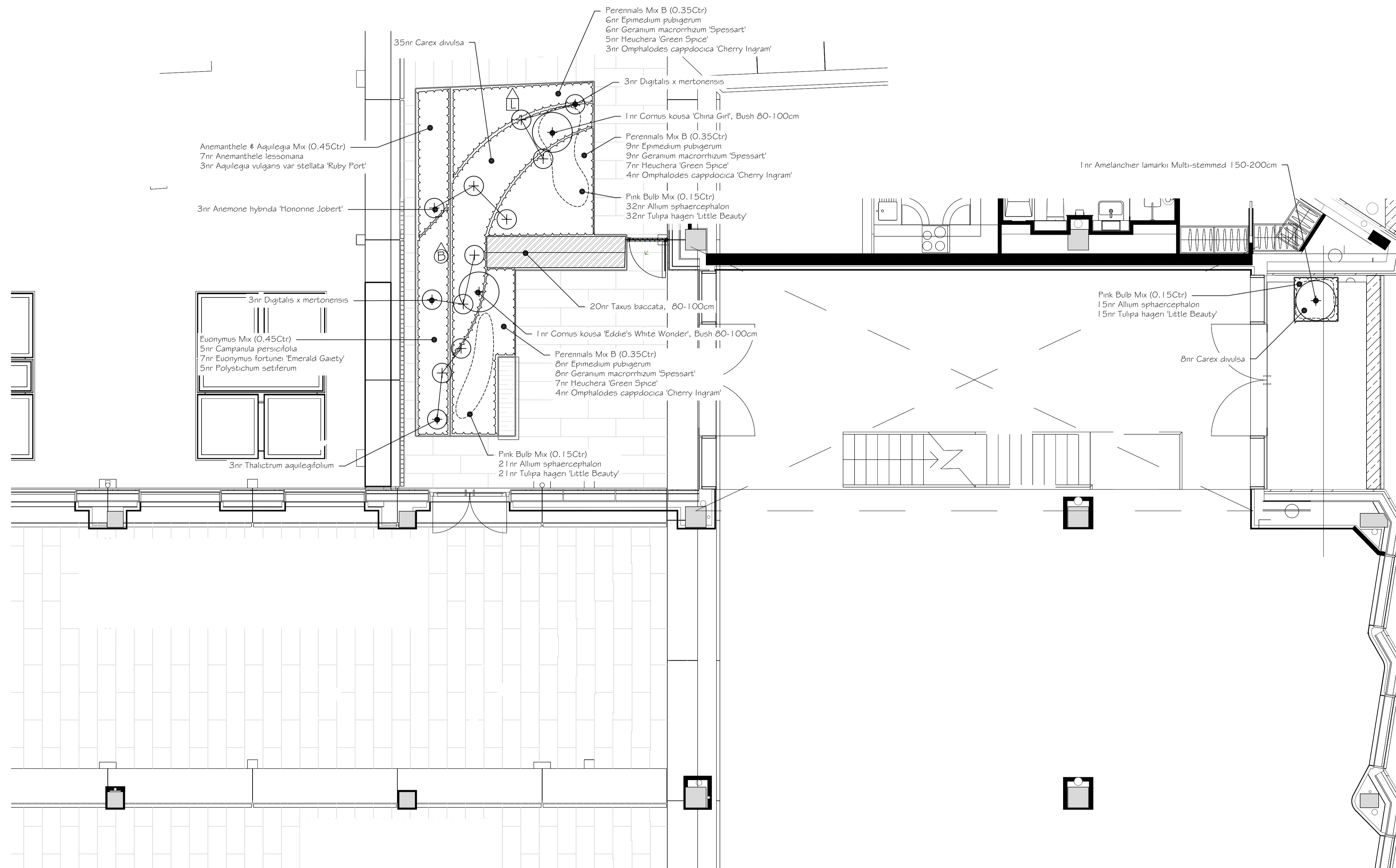


Key

-  Shrubs, perennials, grasses planting
-  *Taxus baccata* hedge
Double staggered rows 7 plants per linear metre
Maintained as 1.5m high hedge
-  Spot plants
-  Bulb underplanting

Insect Houses

-  Ladybird House from Greengardener.co.uk
-  Beneficial Insect House from Greengardener.co.uk



NOTES:

REFER TO DETAILED PLANTING - SCHEDULE L2 (L17412-TLP-SchL2)

- All planting is specified to be carried out between the months of November and March. If planting is carried out outside this season, the specification should be changed to container grown plants only.
- Surface Mulching to all plant beds shall be 25mm depth of LECA mulch, free from fungus, disease and debris.
- In order to comply with DEFRA guidance: All plant stock to be either propagated from seed in the UK or grown in the UK for a minimum 12 months
- Plant mixes: plants to be grouped in 2s and 3s of the same plant to create naturalistic groupings

Planting revised to suit amended terrace layout, biodiversity enhancements added to layout

Revision Number By Date

A LW 08/04/2021



Project
Stephenson House, Camden

Bedford	01234 261315	<input type="checkbox"/>
Woodbridge	01394 380509	<input checked="" type="checkbox"/>
London	020 7252 0002	<input type="checkbox"/>
Norwich	01603 230777	<input type="checkbox"/>

Drawing
Detailed Planting -
L2 Terrace

Job No. 17412

Dwg. No. 17412-TLP-420

Scale 1:50@A1

Drawn LH

Checked LW

Date 18-12-2018

Status
CONSTRUCTION

Do not scale off drawing. All dimensions & Levels are to be checked on site. Any discrepancies must be reported to the landscape architect immediately.
Copyright THE LANDSCAPE PARTNERSHIP LTD

