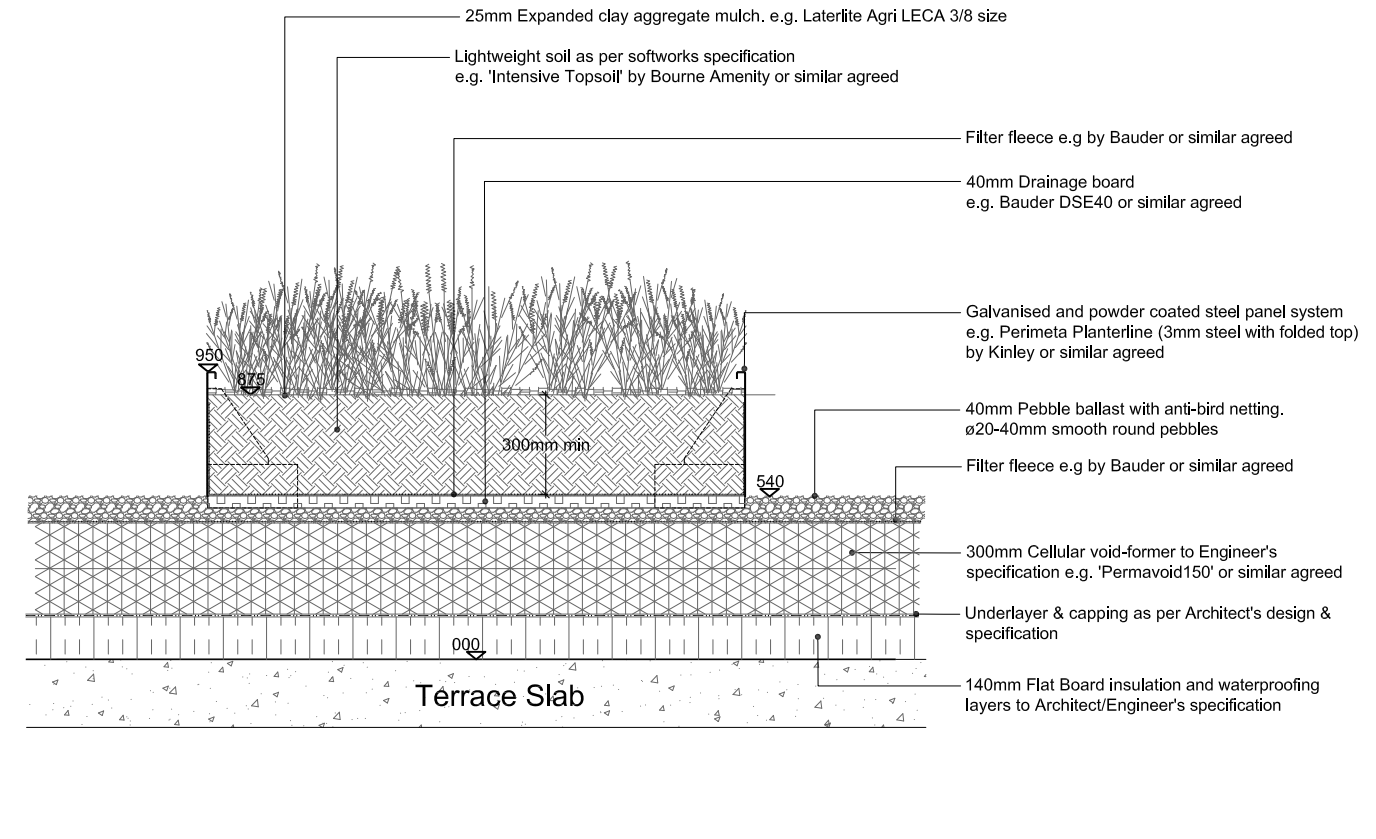
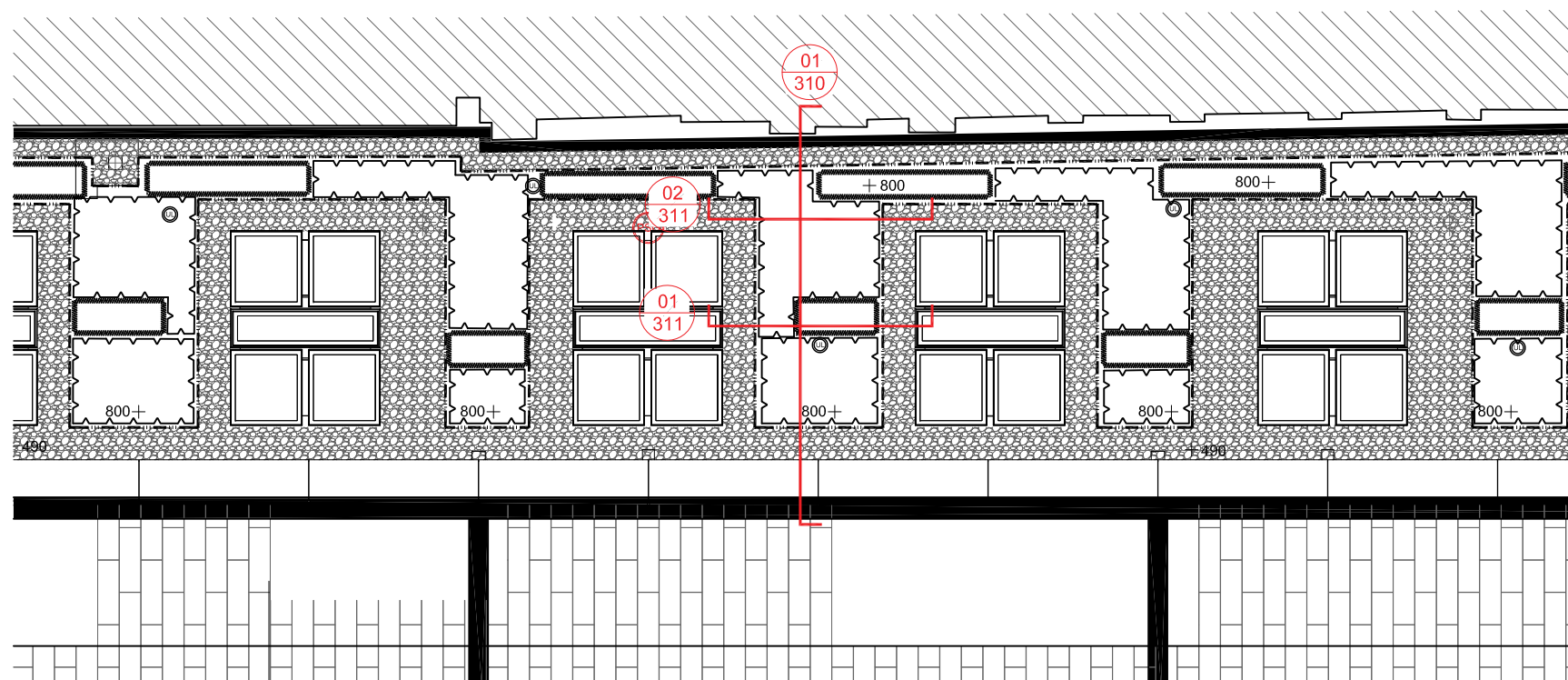


01 Typical Detail: Terrace Level 1 Steel Planter & Roof Lights
Scale 1:25@A3



02 Typical Detail: Terrace Level 1 Steel Planter
Scale 1:25@A3



- NOTE:
- Access to First Floor terrace for Maintenance only
 - 300mm depth void former e.g. Permavoid throughout (refer to Architects / Engineers for details and specification)
 - Details for Insulation, waterproofing, perimeter balustrade etc. by others
 - Finished levels to be confirmed pending confirmation and coordination with roof insulation / attenuation system
 - External lighting to terraces shown indicatively only, refer to lighting designer for details
 - Dripline irrigation to raised planters by Access Irrigation (or similar agreed). Pipework from bibtaps runs under paving. 1no. battery powered, bluetooth enabled control box for each terrace concealed in planter.
 - Drainage outlets to Engineer's design & specification
 - FFL and threshold details to Architects' design & specification
 - 300mm gravel strip (maintained free of vegetation) where planting meets parapet / building upstand. 500mm minimum around rooflights
 - Refer to 400 series for detailed planting plans. Planting offers biodiversity benefits and incorporates native species

Firebreak removed, gravel layer added. Planter positions amended to suit revised Architectural layouts	D	LW	08-03-2021
Key plan, notes updated	C	JW	07-08-2020
Notes updated for construction	B	LW	03-07-2020
Gravel fire break added to Permavoid layer in line with Fire Strategy Report	A	LW	29-05-2020

Revision	Number	By	Date
----------	--------	----	------



Project	Bedford 01234 261315 <input type="checkbox"/>
	Woodbridge 01394 380509 <input type="checkbox"/>
	London 020 7252 0002 <input checked="" type="checkbox"/>
	Norwich 01603 230777 <input type="checkbox"/>
Stephenson House, Camden	
Drawing	Job No. 17412
Terrace Details - Level 1	Dwg. No. 17412-TLP-311
Sheet 2	Scale 25@A3
	Drawn JW
Status	Checked LW
CONSTRUCTION	Date 18-12-2018
	North

Do not scale off drawing. All dimensions & Levels are to be checked on site. Any discrepancies must be reported to the landscape architect immediately.
Copyright THE LANDSCAPE PARTNERSHIP LTD