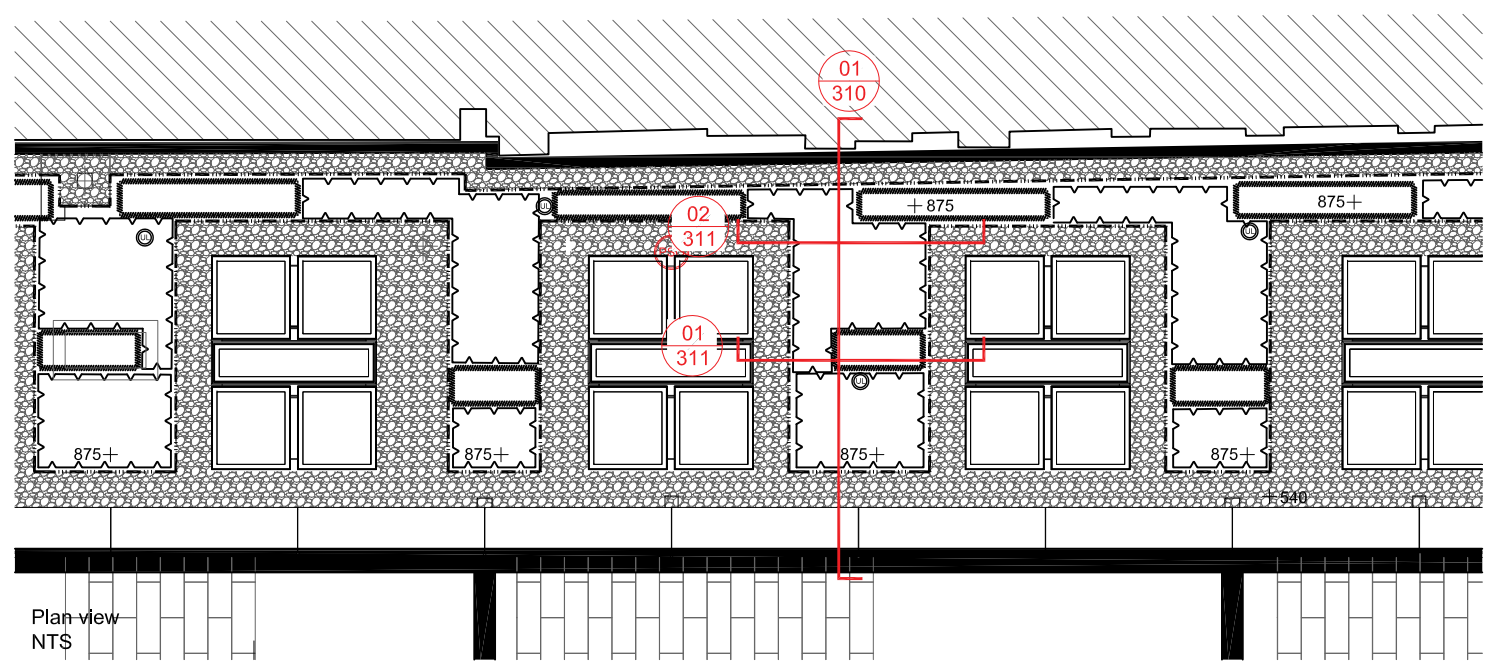
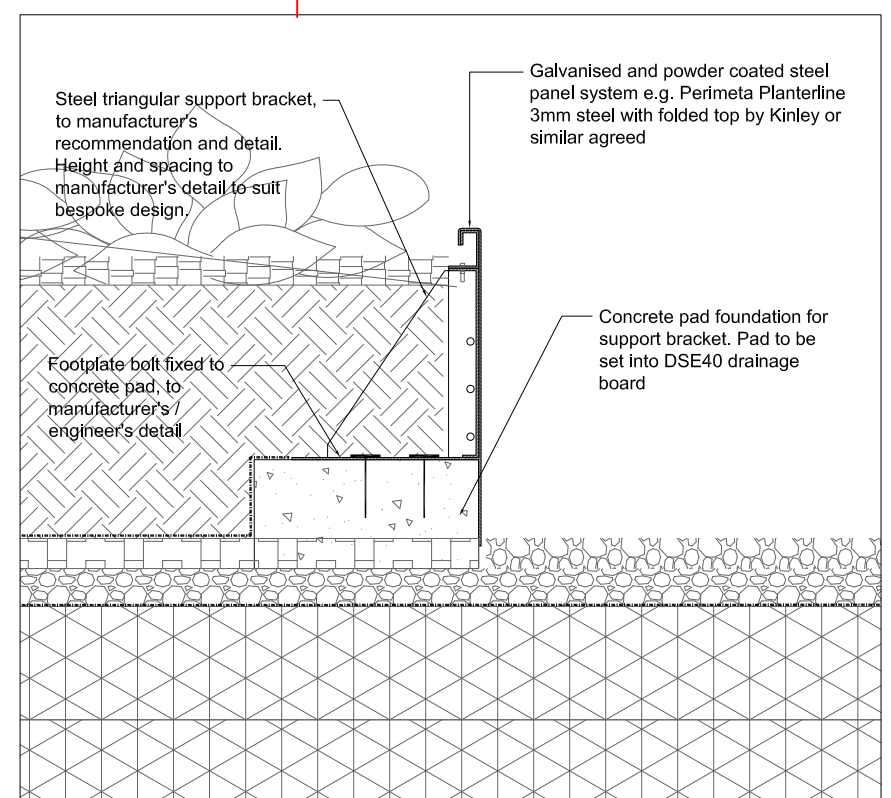


01 Typical Detail: Terrace Level 1 Steel Planter & Parapet  
Scale 1:25@A3



Plan view  
NTS

- NOTE:
1. Access to First Floor terrace for Maintenance only
  2. 300mm depth void former e.g. Permavoid throughout (refer to Architects / Engineers for details and specification)
  3. Details for insulation, waterproofing, perimeter balustrade etc. by others
  4. Finished levels to be confirmed pending confirmation and coordination with roof insulation / attenuation system
  5. External lighting to terraces shown indicatively only, refer to lighting designer for details
  6. Dripline irrigation to raised planters by Access Irrigation (or similar agreed). Pipework from bibtaps runs under paving. 1no. battery powered, bluetooth enabled control box for each terrace concealed in planter.
  7. Drainage outlets to Engineer's design & specification
  8. FFL and threshold details to Architects' design & specification
  9. 300mm gravel strip (maintained free of vegetation) where planting meets parapet / building upstand. 500mm minimum around rooflights
  10. Refer to 400 series for detailed planting plans. Planting offers biodiversity benefits and incorporates native species



02 Typical Detail: Terrace Level 1 Planter edge typical detail  
Scale 1:10@A3

Soil level updated	D	LW	08-03-2021
Firebreak removed, gravel layer added, planter edge moved away from boundary wall to suit upstand detail	C	LW	08-03-2021
Key plan, notes updated	B	JW	07-08-2020
Notes updated for construction	A	LW	03-07-2020

Revision	Number	By	Date
----------	--------	----	------



Project	Bedford	01234 261315	<input type="checkbox"/>
Stephenson House, Camden	Woodbridge	01394 380509	<input type="checkbox"/>
	London	020 7252 0002	<input checked="" type="checkbox"/>
	Norwich	01603 230777	<input type="checkbox"/>
Job No.	17412		
Dwg. No.	17412-TLP-310		
Scale	VARIES@A3		
Drawn	JW		
Checked	LW		
Date	18-12-2018		

Do not scale off drawing. All dimensions & Levels are to be checked on site. Any discrepancies must be reported to the landscape architect immediately.  
Copyright THE LANDSCAPE PARTNERSHIP LTD

North
-------