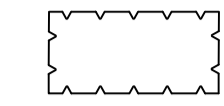



NOTES:


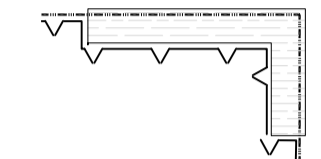

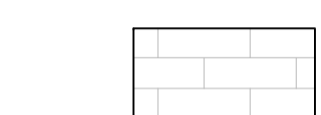





1. Details for insulation, waterproofing, perimeter balustrade etc. by others
2. Refer to Architect's details for paving levels and specification
3. Soil and planter levels to be confirmed and coordinated with finished roof insulation levels
4. External lighting to terraces shown indicatively only, refer to lighting designer for details
5. Dripline irrigation to raised planters by Access Irrigation (or similar agreed). Pipework from bibtaps runs under paving. 1no. battery powered, bluetooth enabled control box for each terrace concealed in planter. Location and further details to be confirmed with manufacturer / supplier
6. Drainage outlets to Architect / Engineer's design & specification
7. FFL and threshold details to Architects' design & specification
8. Fixings to structural slab for metalwork (fences) etc. to be agreed / coordinated with Architects and engineers
10. Position of concrete pads / footings to planter edge to be coordinated to avoid placement within gutters. Refer to MBA drawing: Tapered Insulation Roof Plan 601-A-0212 for position of gutters and outlets
11. Refer to 400 series for detailed planting plans. Planting offers biodiversity benefits and incorporates native species

KEY





SOFTWARES

-  Proposed planting:
Build-up includes; surface mulch, 300-400mm lightweight intensive roof garden soil, drainage & water retention layer e.g. DSE40 by Bauder, filter fleece protection & separation layers
-  Multi-stem trees / Large shrubs
Build-up includes; surface mulch, min. 550mm lightweight intensive roof garden soil, drainage & water retention layer e.g. DSE40 by Bauder, filter fleece protection & separation layers

HARDWORKS

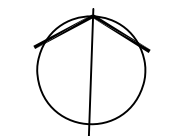
-  Raised planters:
Galvanised and powder coated steel panel system, e.g. Perimeta Planterline (3mm) by Kinley or similar agreed. Colour TBC
-  Timber seats/benches integrated with steel planters, e.g. 'Planterline' by Kinley Systems or similar agreed
Details to be confirmed
-  Freestanding planter (to Hampstead Road balcony)
950 x 950 x 1100 (h)mm galvanised and powder coated steel planter e.g. Kinley Planterline
-  Porcelain paving on pedestal system
e.g. 'Petrology Stone 1 20mm' by Domus or similar agreed.
Refer to Architect's specification
-  Inspection cover required in paving to access drainage channel outlet. Refer to Architect's specification and details
-  Watering point
Exact location to be confirmed / coordinated with Architects and Engineers
-  Uplighters to trees & large specimen shrubs
Shown indicatively only, refer to Lighting designer and M&E Engineers for further details
-  Decorative strip lighting
Low level decorative lighting integrated into seat / planter. Shown indicatively only, refer to Lighting designer and M&E engineers for further details
-  External power socket outlet position. Power socket fixed to upright beneath bench. Refer to Architects / Engineers for details

LEVELS & FALLS

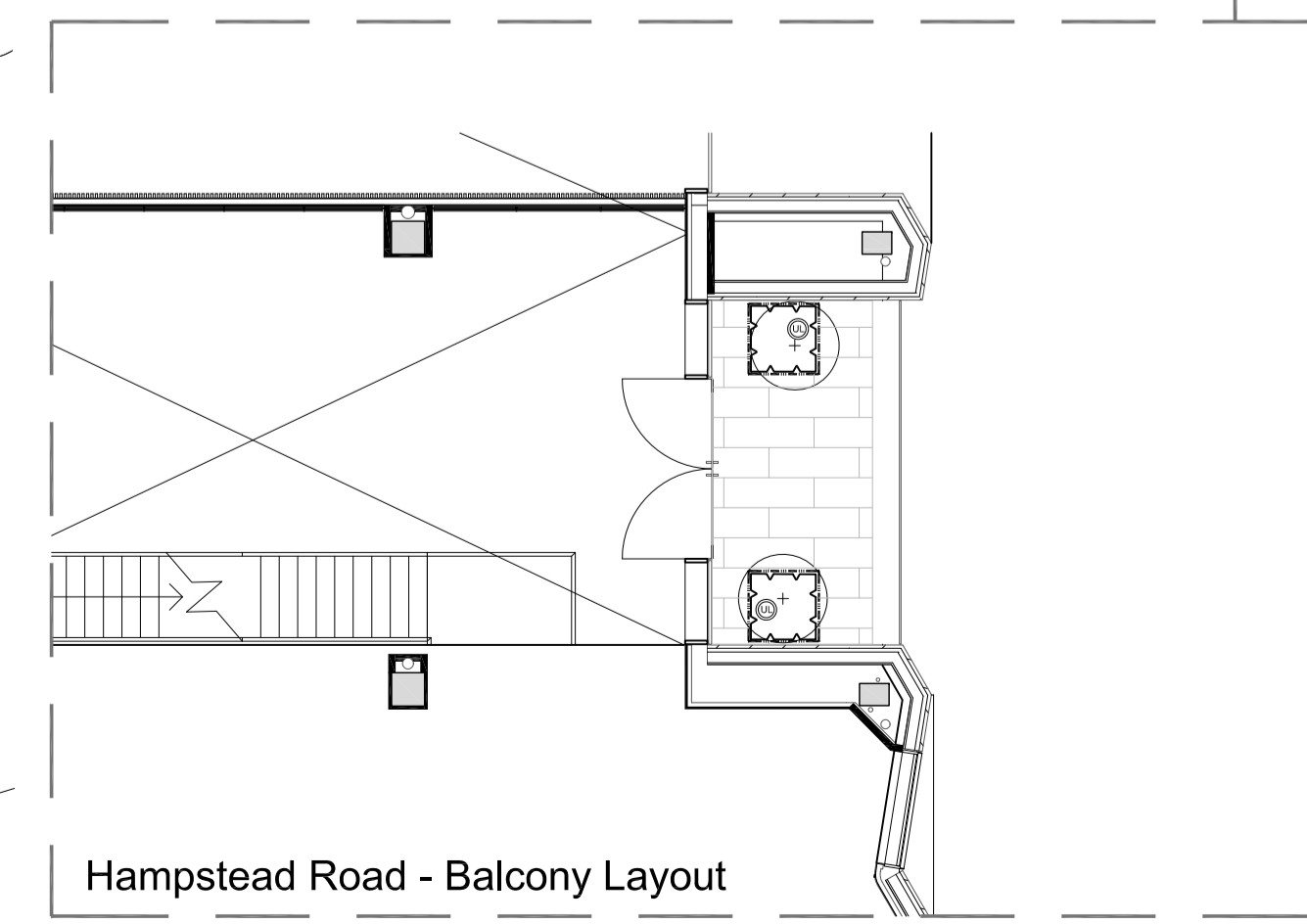
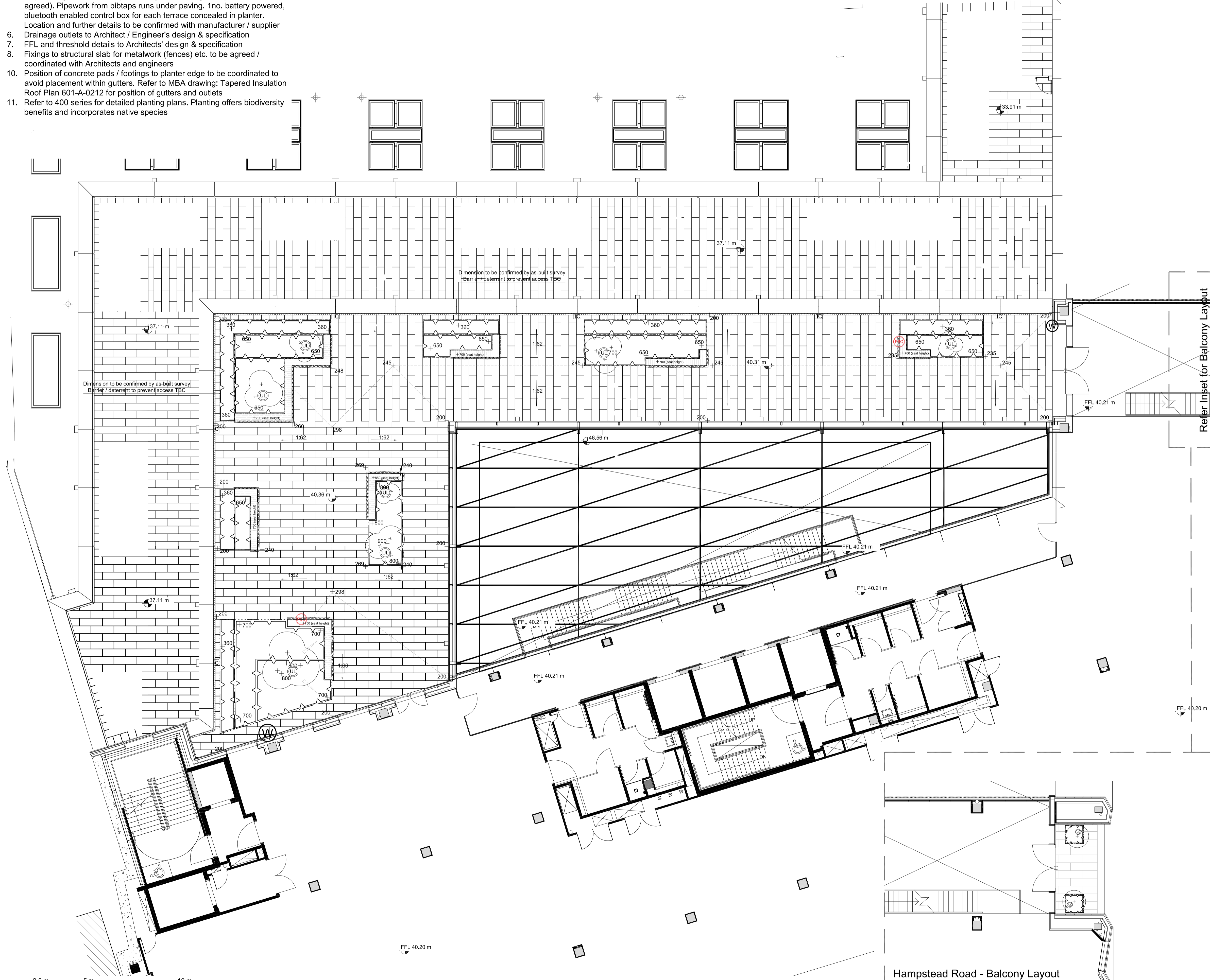
-  Proposed level (relative to SSL).
Paving levels indicative only, refer to Architects details
-  Drainage falls
-  Paving ridge line
-  Bank/slope in planting

Planters adjusted to suit paving layout	C	LW	05-03-2021
Architect layout updated, planters adjusted, notes amended	B	LW/JW	20-08-2020
External power sockets added	A	LW	03-07-2020
Revision	Number	By	Date



Project	Stephenson House, Camden	Bedford 01234 261315 <input type="checkbox"/>	Woodbridge 01394 380509 <input type="checkbox"/>	London 020 7252 0002 <input checked="" type="checkbox"/>	Norwich 01603 230777 <input type="checkbox"/>
Drawing	General Arrangement - L4 Terrace	Job No. 17412	Dwg. No. 17412-TLP-104	Scale 1:100@A1	Drawn JW
Status	CONSTRUCTION	Checked LW	Date 18-12-2018	North 	

Do not scale off drawing. All dimensions & Levels are to be checked on site. Any discrepancies must be reported to the landscape architect immediately.
Copyright THE LANDSCAPE PARTNERSHIP LTD



SCALE: 1:100