

KEY

Fire appliance position in case of a fire (fire appliance shown as 10.5m long by 2.3m wide)

Evacuation assembly point

Evacuation route

Proposed Site Plan 1:200

Policy D12 Fire safety

A

In the interests of fire safety and to ensure the safety of all building users, all development proposals must achieve the highest standards of fire safety and ensure that they:

- identify suitably positioned unobstructed outside space:
  - for fire appliances to be positioned on
  - appropriate for use as an evacuation assembly point
- are designed to incorporate appropriate features which reduce the risk to life and the risk of serious injury in the event of a fire; including appropriate fire alarm systems and passive and active fire safety measures
- are constructed in an appropriate way to minimise the risk of fire spread
- provide suitable and convenient means of escape, and associated evacuation strategy for all building users
- develop a robust strategy for evacuation which can be periodically updated and published, and which all building users can have confidence in
- provide suitable access and equipment for firefighting which is appropriate for the size and use of the development.

Policy D12

A.1 (a) Please see proposed site plan opposite which shows the location and unobstructed outdoor space for a fire appliance to be positioned.

A.1 (b) Please see proposed site plan opposite which shows the location and unobstructed outdoor space for evacuation assembly points. The pavement infront of these terraced houses are clear and will be suitable as a evacuation points.

A.2 Please see drawing 7335/10 (Proposed Fire Strategy - floor plans) for the identified locations of heat and smoke detectors throughout the building which are all to be hardwired & interlinked.

A.3 Please see drawing 7335/10 (Proposed Fire Strategy - floor plans) for the identified means of escape. Due to the existing location of the kitchen, to ensure a safe egress out of the flat, a misting system is to be installed throughout. The separating ceiling will be one hour fire resistant to minimise the risk of fire spread to the upper floors and all doors will be FD30 throughout.

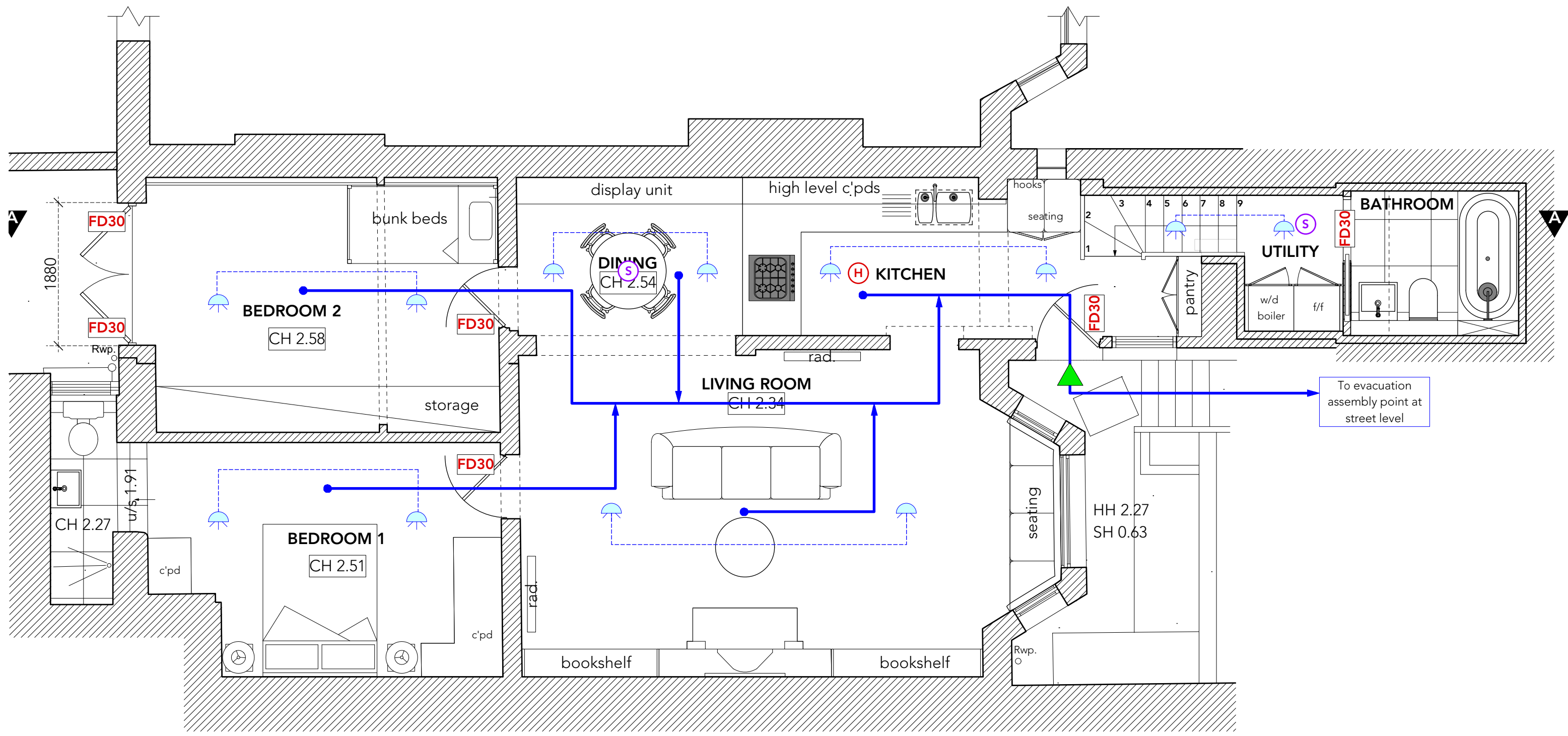
A.4 Please see drawing 7335/10 (Proposed Fire Strategy - floor plans) for the identified means of escape from each habitable room within the flat and the dedicated evacuation assembly points on drawing 7335/09.

A.5 Please see drawing 7335/10 (Proposed Fire Strategy - floor plans) and 7335/09 for the evacuation strategy (means of escape and evacuation assembly points)




A.6 Please see drawing 7335/10 (Proposed Fire Strategy - floor plans) for the identified access for firefighting staff and due to the size of the development, no equipment will be required.

A north arrow pointing upwards and a scale bar from 0 to 5 meters.

WRITTEN DIMENSIONS ONLY TO BE USED ALL DIMENSIONS ARE IN MILLIMETRES ALL DIMENSIONS TO BE VERIFIED ON SITE ANY INCONSISTENCIES TO BE REPORTED TO THE ARCHITECT IMMEDIATELY	Job No: 7335		p-ad 192D Compden Hill Road, Notting Hill Gate, London, W8 7TH		t: 0208-4590172 e: hello@pelicanad.co.uk		p-ad		
	PLANNING		Title	Proposed Fire Strategy - site plan					
	31A Belsize Crescent London NW3 5QY		Drawn by ST	Scale 1:200 @ A3	Number 7335/ FS-1	Rev B			






KEY



Misting system (sprinklers)

All doors to be 30minutes fire rated

Identified access points for firefighting staff



Means of escape

Heat detector

Smoke detector

N

0

0.5

1

2

WRITTEN DIMENSIONS ONLY TO BE USED ALL DIMENSIONS ARE IN MILLIMETRES ALL DIMENSIONS TO BE VERIFIED ON SITE ANY INCONSISTENCIES TO BE REPORTED TO THE ARCHITECT IMMEDIATELY	Job No: 7335	p-ad 192D Campden Hill Road, Notting Hill Gate, London, W8 7TH		t: 0208-4590172 e: hello@pelicanad.co.uk		p-ad
	PLANNING					
	31A Belize Crescent London NW3 5QY	Title ST	Proposed Fire Strategy - floor plan	Scale 1:50 @ A3	Number 7335/FS-2	Rev B