

WATERPROOFING RISK ASSESSMENT TO BE PROVIDED BY SPECIALIST. DETAILS ON THIS DRAWING ARE INDICATIVE AND ALL FINAL DETAILS ARE TO BE PROVIDED BY SPECIALIST.

REFER TO TYPICAL SLAB, PILE CAP AND GROUND BEAM DETAILS FOR HEAVE PROTECTION AS INDICATED ON DRAWING MHA-ACM-00-XX-DR-SE-05005

DRAWING TO BE READ WITH PROJECT SPECIFIC DRAWINGS BY PUDLO/DB GROUP: SERIES AEC-BP-002, 008, 009, 010, 014 & PUDLO-TJD-BW-SS-011b - CAPPING BEAM KWIKASTRIP DETAIL AND PUDLO NBS SPECIFICATIONS.

FOR TYPICAL NOTES, PLEASE REFER TO DRAWING 01001

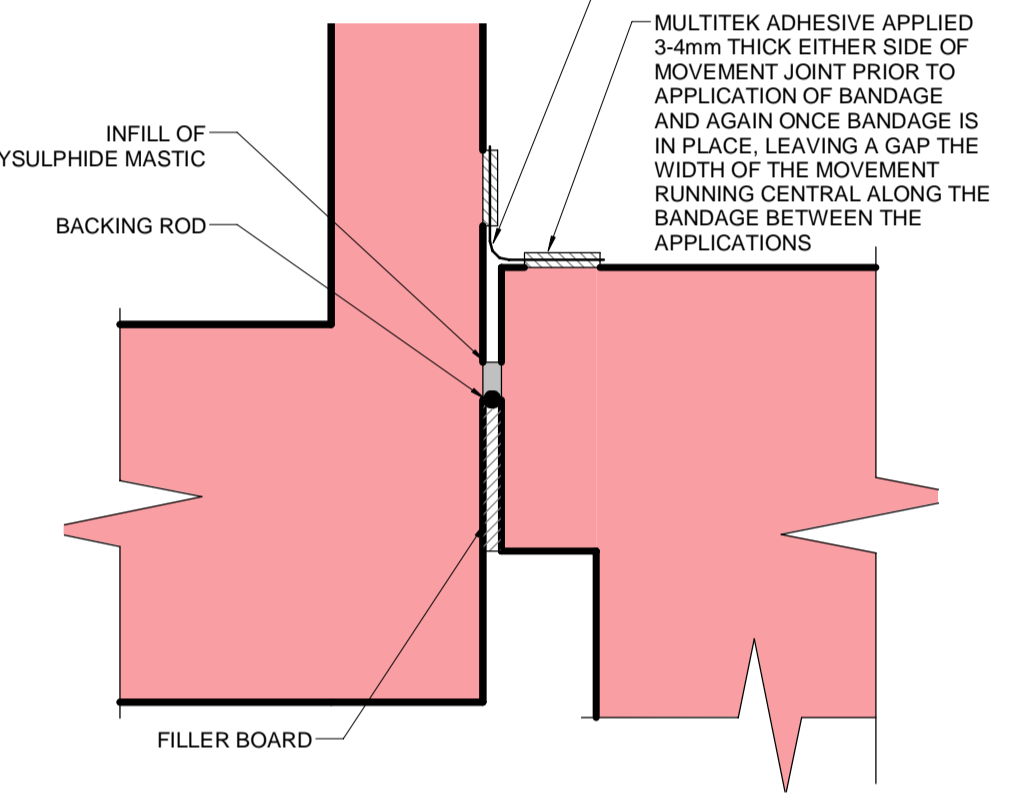
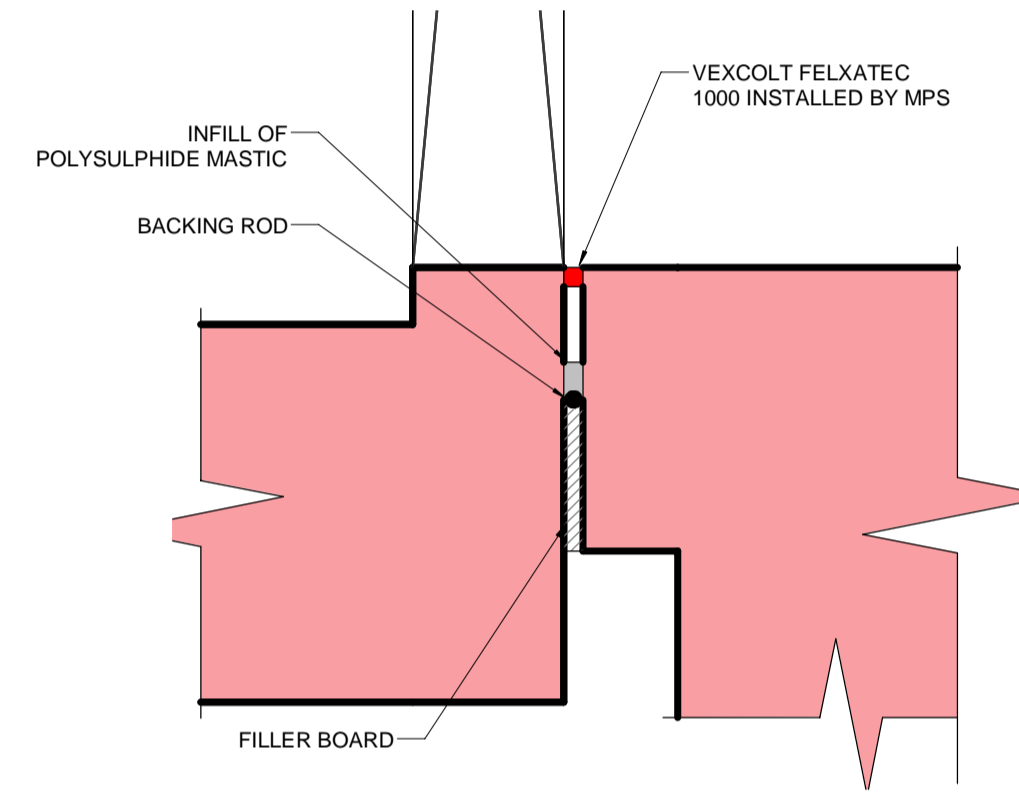
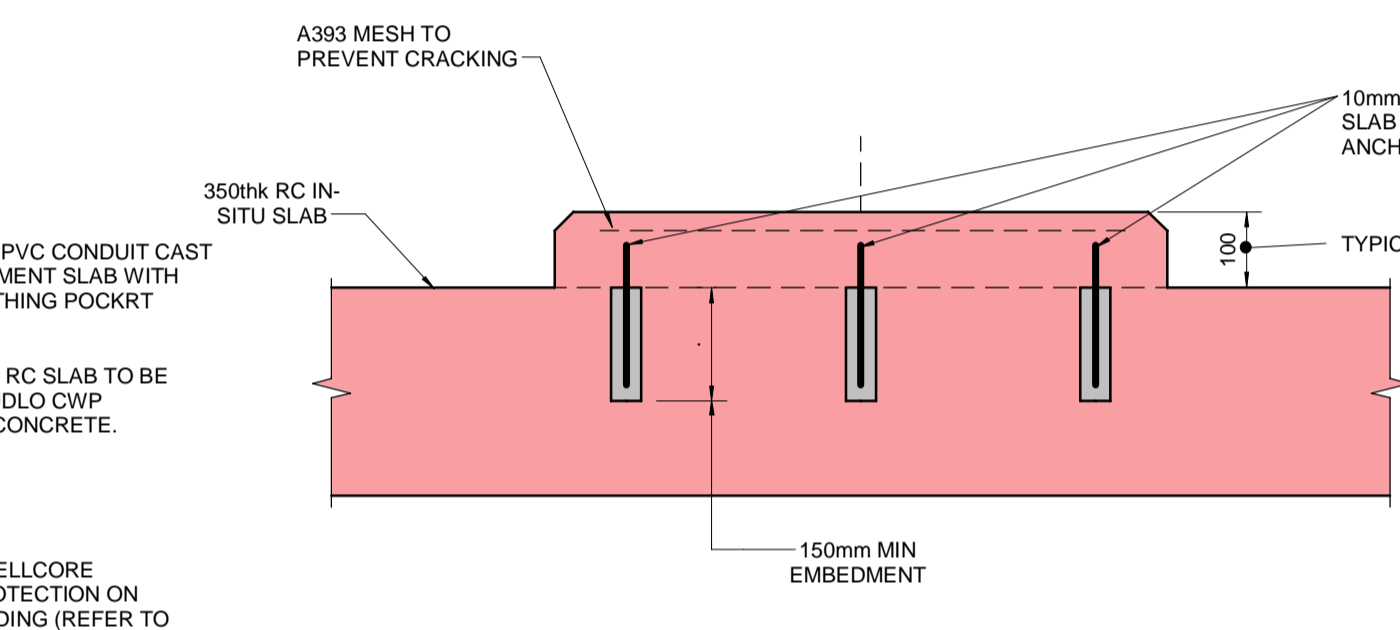
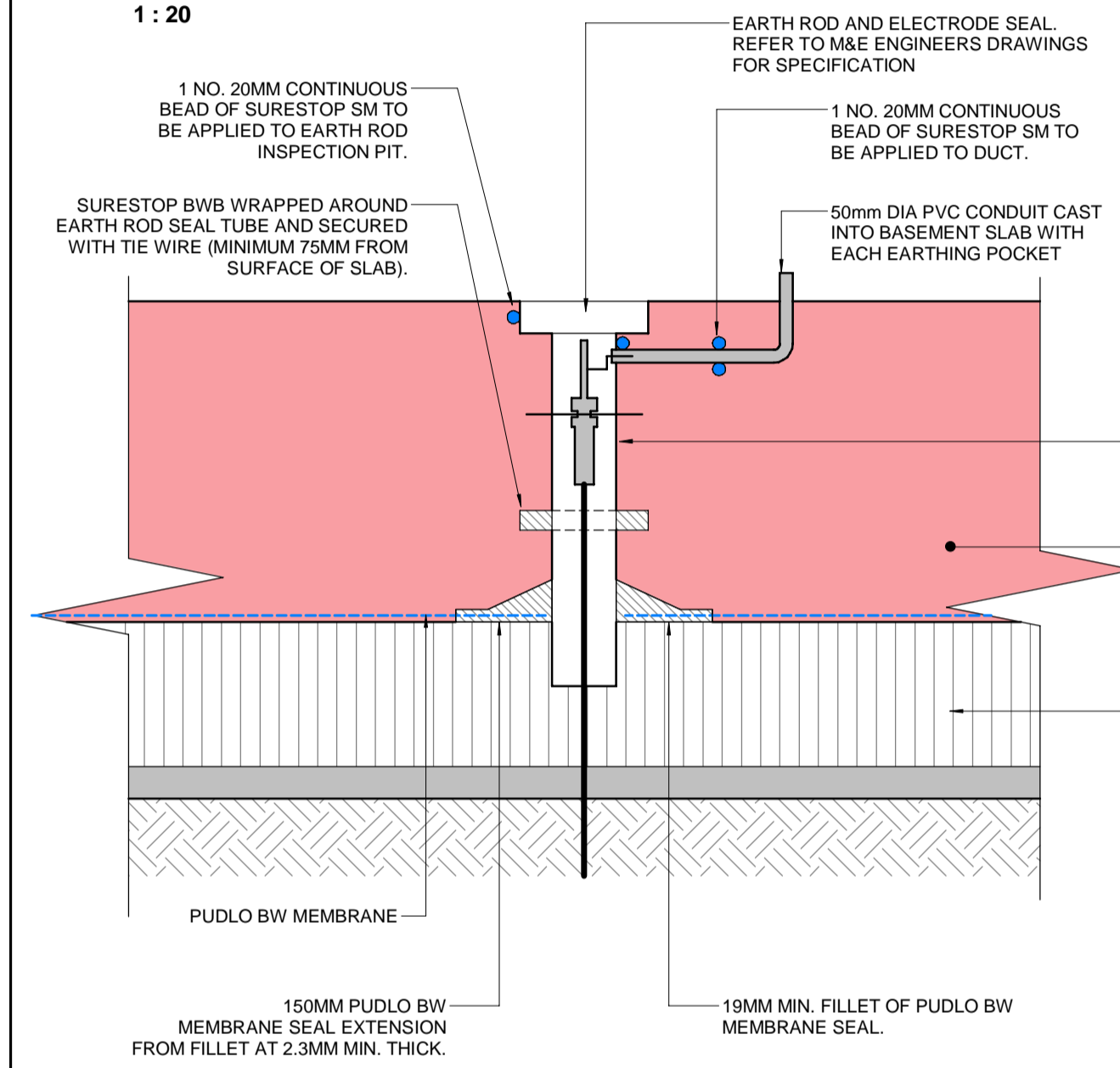
- Notes**
- Do not scale from this drawing. Work to figured dimensions only.
  - This drawing is to be read in conjunction with:
    - AECOM Structural Specifications
    - Design reports
    - Survey and Interpretative Reports
    - Project Specifications and Performance Specifications
    - Health and Safety Hazard Register
    - Relevant drawings and documentation issued by the architect, engineers and specialists.
    - Building Information Model (BIM)
    - Movements and Tolerances Report
  - All dimensions are in mm except levels which are in metres and relate to [ordance datum].
  - Any discrepancies shall be referred to the Designer before work commences.

**DETAIL 8. TYPICAL CONNECTION AT INTERMEDIATE BASEMENT SLAB LEVEL**  
 1 : 20

**DETAIL 9. TYPICAL CONNECTION AT B1 SLAB**  
 1 : 20

**DETAIL 10. TYPICAL CONNECTION OF SLAB AT B2 SLAB**  
 1 : 20

**TYPICAL DOWELL CONNECTION DETAIL (PLAN)**  
 1 : 100

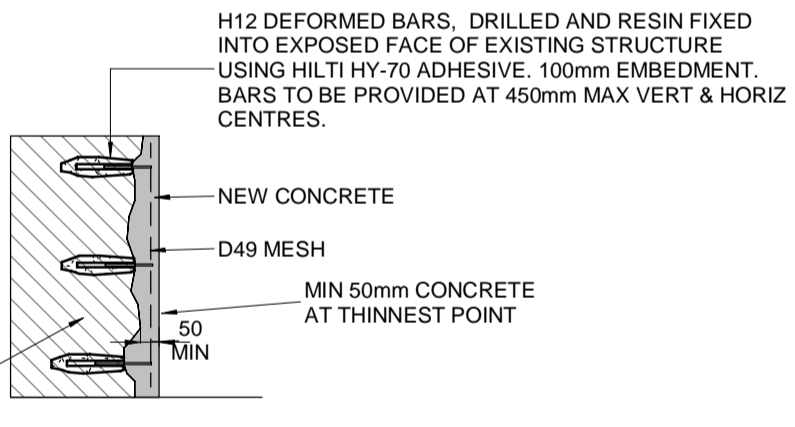


**DETAIL 12. TYPICAL PLINTH DETAIL AT BASEMENT LEVELS**  
 1 : 10

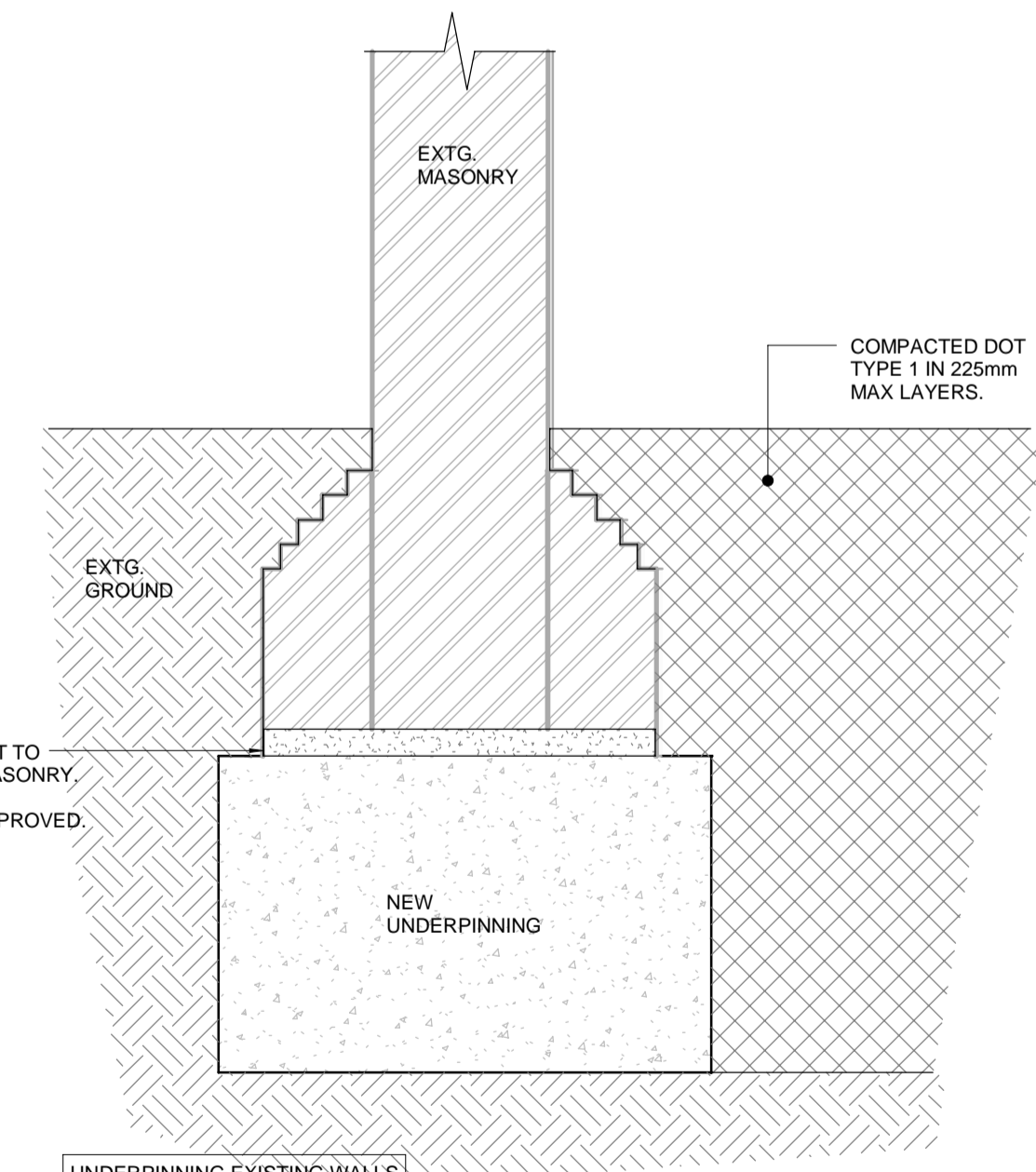
**DETAIL 14.**  
 1 : 10

**DETAIL 15.**  
 1 : 10

**DETAIL 11. CAST-IN EARTHING ROD DETAIL**  
 1 : 10

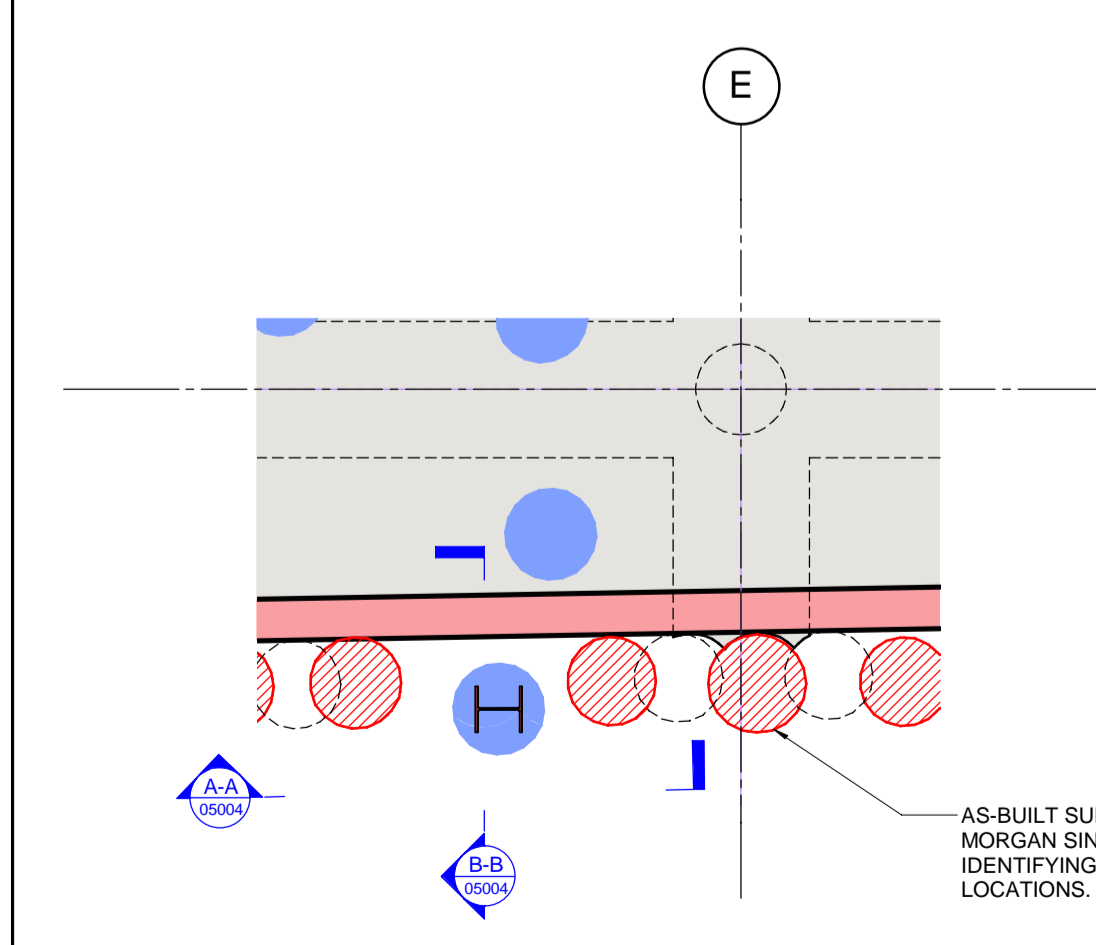


**TYPICAL DETAIL FOR SQUARING OFF EXISTING STRUCTURE**  
 1 : 20

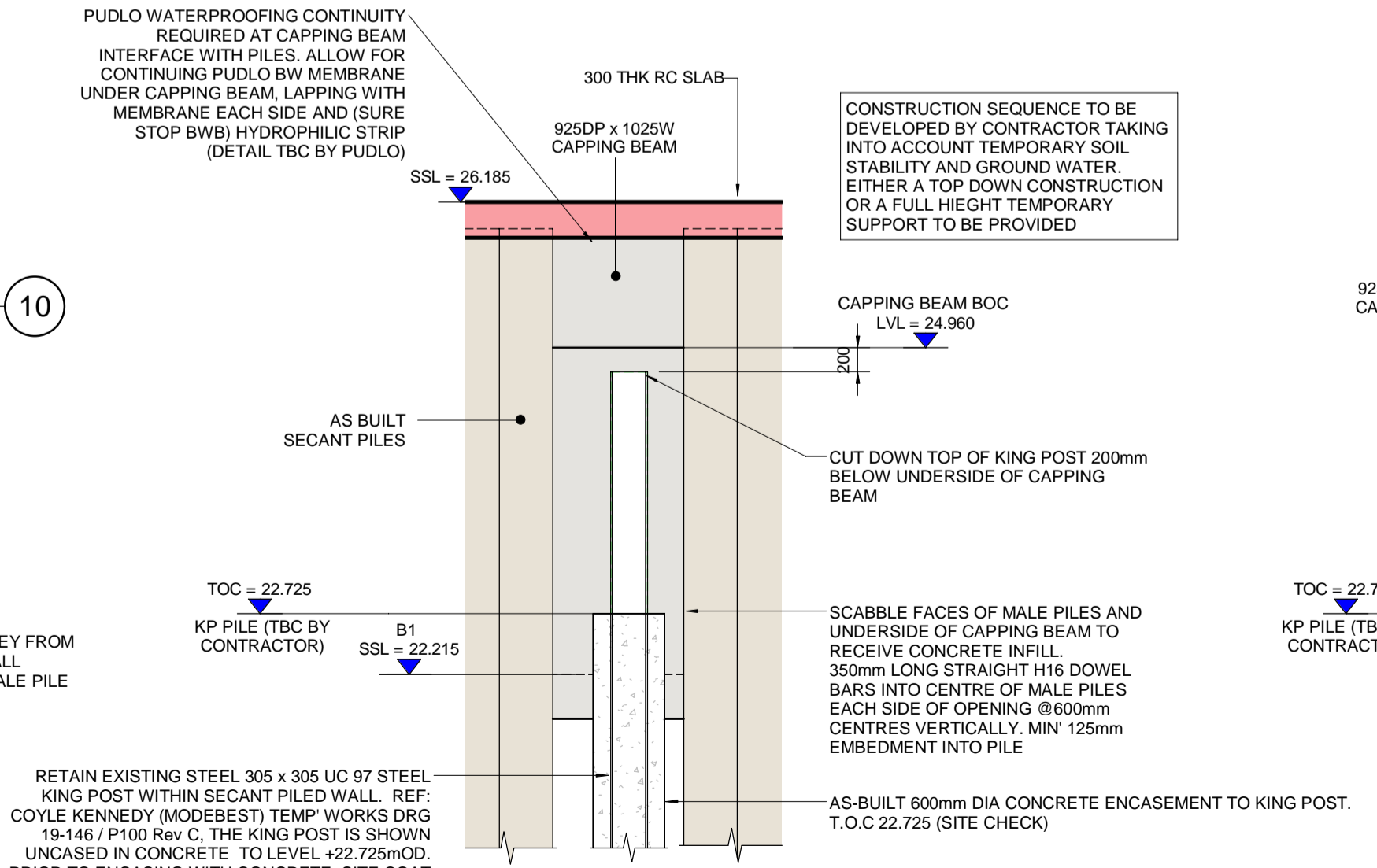


- UNDERPINNING EXISTING WALLS**
- DETAIL ABOVE TO BE READ IN CONJUNCTION WITH ALL OTHER RELEVANT DRAWINGS AND SPECIFICATIONS.
  - REFER TO SPECIFICATION FOR CONCRETE MIX.
  - DRY PACK MORTAR TO BE 3:1 SHARP SAND/CEMENT WITH NON-SHRINK ADDITIVE BY CEBEX OR SIMILAR APPROVED.
  - SEQUENCE OF UNDERPINNING SECTIONS:  
 DAY 1 - EXCAVATE SECTION AND CAST CONCRETE UP TO 75mm FROM THE UNDERSIDE OF THE EXISTING CLEANED FOOTING.  
 DAY 3 - RAM INTIGHT DRYPACK MORTAR BETWEEN UNDERPINNING AND EXISTING FOOTING.  
 DAY 5 - COMMENCE NEXT SECTION AND REPEAT AS BEFORE.
  - ANY DRAINS EXPOSED MUST BE ADEQUATELY SUPPORTED OR REPLACED IF REMOVED OR DAMAGED DURING THE WORKS.
  - MAXIMUM LENGTH OF ANY ONE UPIN SECTION TO BE 1000mm.
  - THE CONTRACTOR MUST ENSURE THAT ALL TEMPORARY WORKS ARE ADEQUATELY PROPPED AND SUPPORTED DOWN TO LOWEST GROUND LEVEL.
  - THE CONTRACTOR TO AGREE THE SEQUENCE OF UNDERPINNING, PRIOR TO COMMENCING WORKS, WITH THE STRUCTURAL ENGINEER.

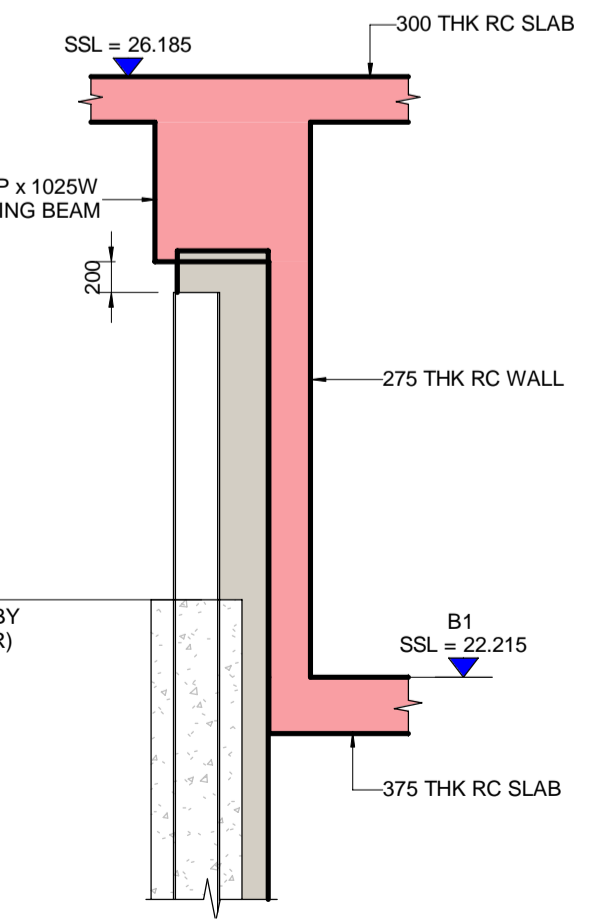
**SECTION TYPICAL UNDERPINNING**  
 1 : 20



**DETAIL 13. CONCRETE INFILL FOR SECANT PILED WALL**  
 1 : 50



**ELEVATION A-A**  
 1 : 50



**SECTION B-B**  
 1 : 50

**Issue/Revision**

Rev.	Date	Description	Drm/Chk/Apr
T5	23.10.20	ISSUED FOR TENDER STAGE 4 REDESIGN	RH/KSF/DW
T4	26.10.18	TENDER - STAGE 1	MNDW/DW
T3	19.08.18	STAGE 4 TENDER (2)	MNDW/DW
T2	01.05.18	STAGE 4 TENDER	MNDW/DW
T1	29.03.18	STAGE 4 TENDER (DRAFT)	MNDW/DW

**Purpose Of Issue**

STAGE 4 TENDER

**Project Number**

60516144

**Sheet Title**

New Build  
 Substructure Details  
 Sheet 2

**Sheet Number**

MHA-ACM-00-XX-DR-SE-05004

Scale: As indicated@A1 Rev: T5

This drawing has been prepared for the use of AECOM's client. It may not be used, modified, reproduced or relied upon by third parties, except as agreed by AECOM or as required by law. AECOM accepts no responsibility, and denies any liability whatsoever, to any party that uses or relies on this drawing without AECOM's express written consent. Do not scale this document. All measurements must be obtained from the stated dimensions.