

Project Management Initials: Designer: Designer Checked: Checked Approved: Approved Drawn By: Author: ISO A1 594mm x 841mm

FOR TYPICAL NOTES, PLEASE REFER TO DRAWING 01001



Project
BEDFORD PASSAGE DEVELOPMENT

UK & IRELAND
Client

MIDDLESEX ANNEXE LLP

Consultant

AECOM
 Aldgate Tower
 2 Leman Street
 London E1 8FA
 United Kingdom
 Tel +44 (0) 20 7061 7000
 www.aecom.com

Notes

- Do not scale from this drawing. Work to figured dimensions only.
- This drawing is to be read in conjunction with:
 - AECOM Structural Specifications
 - Design reports
 - Survey and Interpretative Reports
 - Project Specifications and Performance Specifications
 - Health and Safety Hazard Register
 - Relevant drawings and documentation issued by the architect, engineers and specialists.
 - Basement Sequencing Drawings
 - Movements and Tolerances Report
- All dimensions are in mm except levels which are in metres and relate to [ordance datum].
- Any discrepancies shall be referred to the Designer before work commences.

Issue/Revision

Rev.	Date	Description	Drawn/Checked/Approved
T1	23.10.20	ISSUED FOR TENDER	RH/KSF/DW
C3	30.04.20	SECANT PILING UPDATED TO SUIT STAGE 4 REDESIGN	MNDW/DW
C2	21.04.20	C/BEAMS ALTERED, SLAB THICKENED	MNDW/DW
C1	03.04.20	CONSTRUCTION ISSUE	MNDW/DW
A	21.12.17	STAGE 3 ISSUE_WIP	MNDW/DW

Purpose Of Issue

STAGE 4 TENDER

Project Number

60516144

Sheet Title

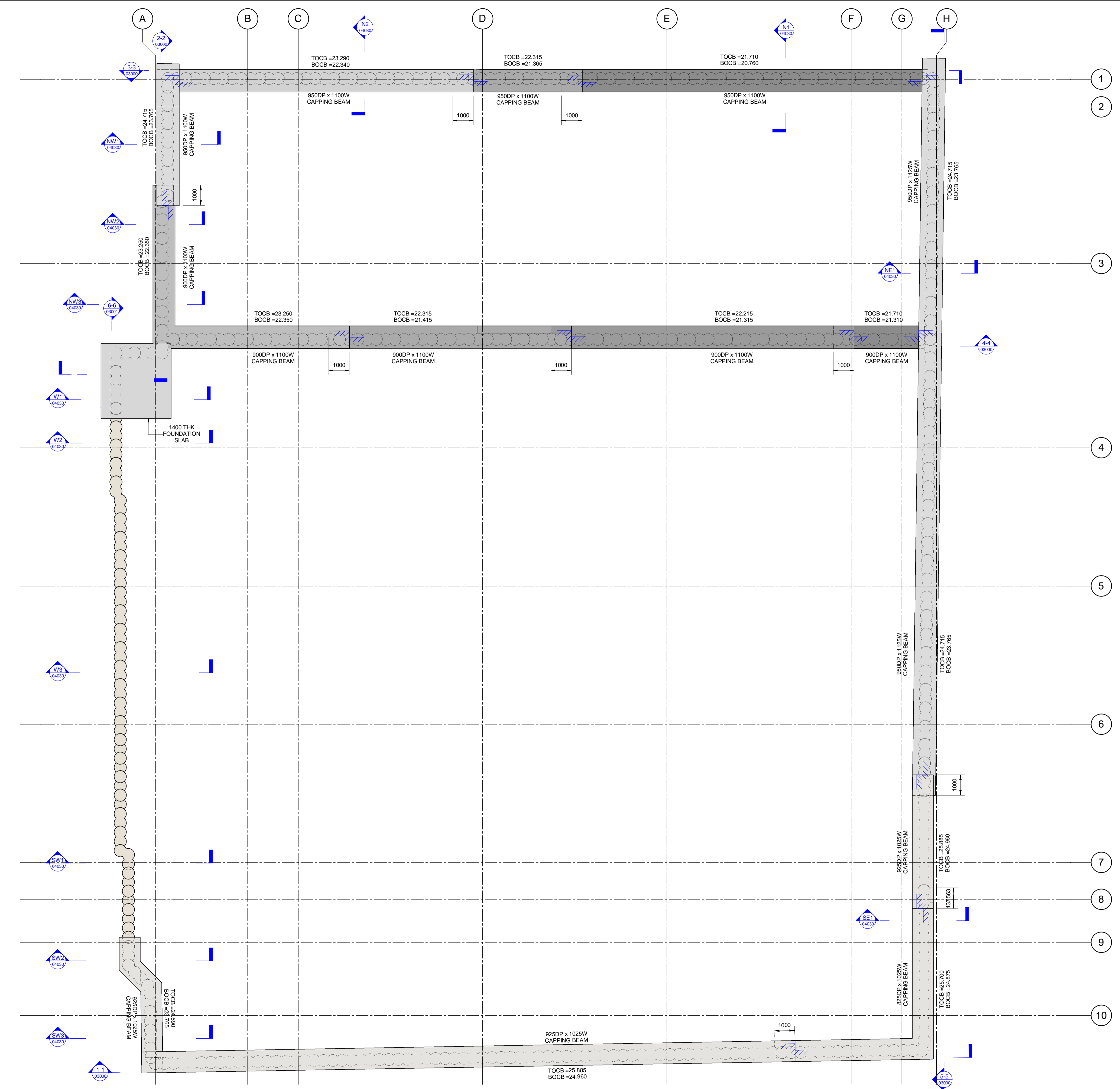
New Build
 Secant Piling

Sheet Number

MHA-ACM-00-GF-DR-SE-01106

Scale: 1 : 100@A1

Rev: T1



Secant Piling Plan
 1 : 100

This drawing has been prepared for the use of AECOM's client. It may not be used, modified, reproduced or relied upon by third parties, except as agreed by AECOM or as required by law. AECOM accepts no responsibility, and denies any liability whatsoever, to any party that uses or relies on this drawing without AECOM's express written consent. Do not scale this document. All measurements must be obtained from the stated dimensions.