

GENERAL NOTES

- DO NOT SCALE FROM THESE DRAWINGS.
- THIS DRAWING TO BE READ IN CONJUNCTION WITH ALL RELEVANT ARCHITECTS AND ENGINEERS DRAWINGS, DETAILS AND SPECIFICATIONS.
- THESE NOTES TO BE READ WHEN REFERRING TO ALL DRAWINGS.
- THE WORKS DESCRIBED AND SPECIFIED ON THIS DRAWING AND ASSOCIATED DRAWINGS SHALL BE UNDERTAKEN IN ACCORDANCE WITH ALL CURRENT HEALTH AND SAFETY LEGISLATION.
- THE CONTRACTOR SHALL AT THE OUTSET, ESTABLISH WITH THE LOCAL AUTHORITY THEIR REQUIREMENTS FOR INSPECTING THE WORKS, AND ADHERE TO THESE.
- ALL DIMENSIONS AND LEVELS SHOWN ON THE DRAWINGS ARE BASED ON SURVEY DRAWINGS AND THE CONTRACTOR IS TO SATISFY HIMSELF THAT DIMENSIONS, LEVELS, ETC., ARE SUFFICIENTLY ACCURATE AND COMPLETE FOR FABRICATION WITHIN THE SPECIFIED TOLERANCES OF ALL PREFABRICATED ELEMENTS.

LEGEND

- EXISTING MASONRY WALL TO BE RETAINED
- DENOTES NEW PROPOSED WALL
- DENOTES CENTRELINE OF NEW STEEL BEAM UNDER
- DENOTES SPAN DIRECTION OF NEW RC FLOOR
- DENOTES ROOT PROTECTION AREA

PLANNING ISSUE

REV.	ISSUED FOR PLANNING	IRS	RWS	07/11/16
	REVISION:	DRN:	CHK:	DATE:
REVISION SCHEDULE				

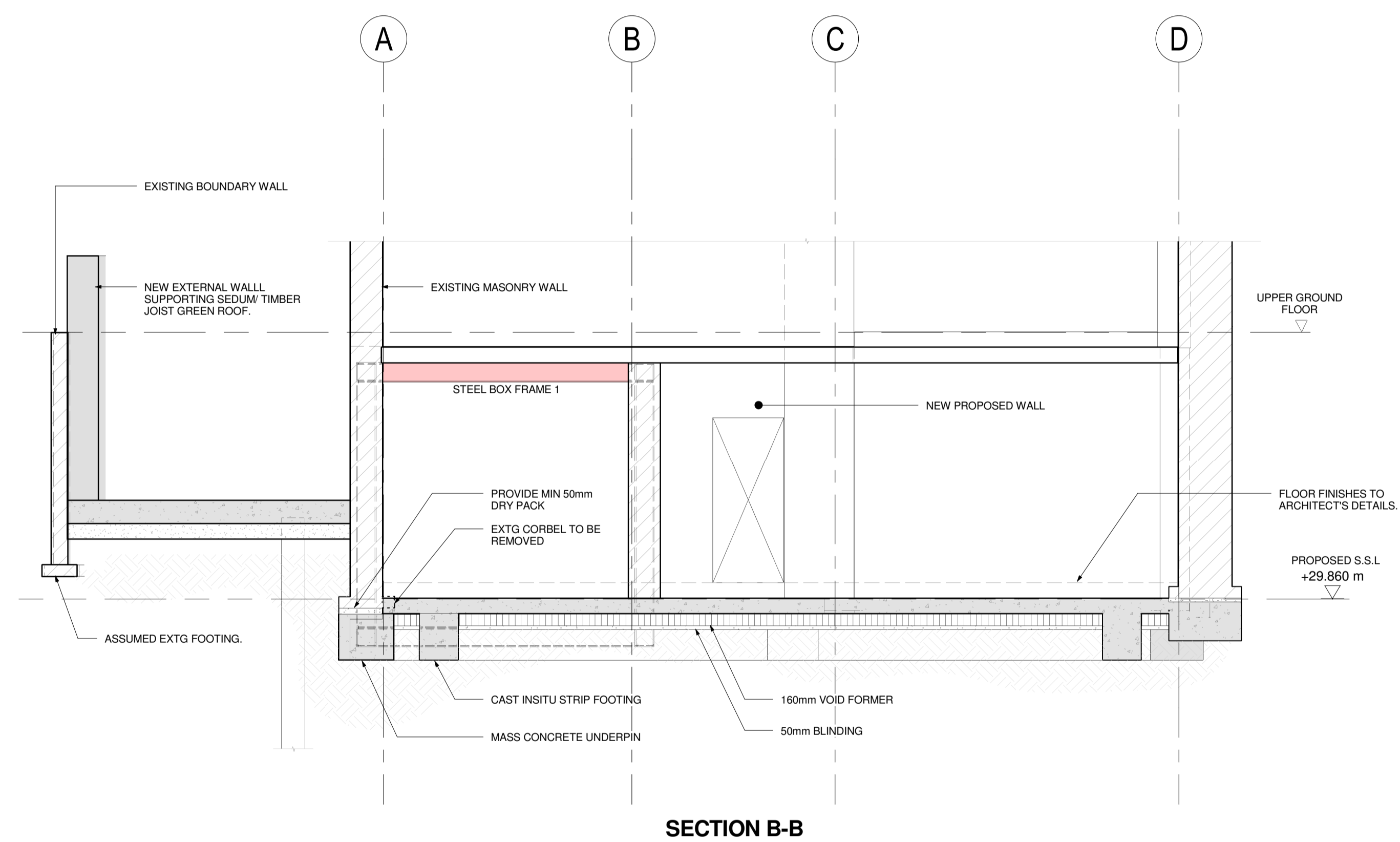
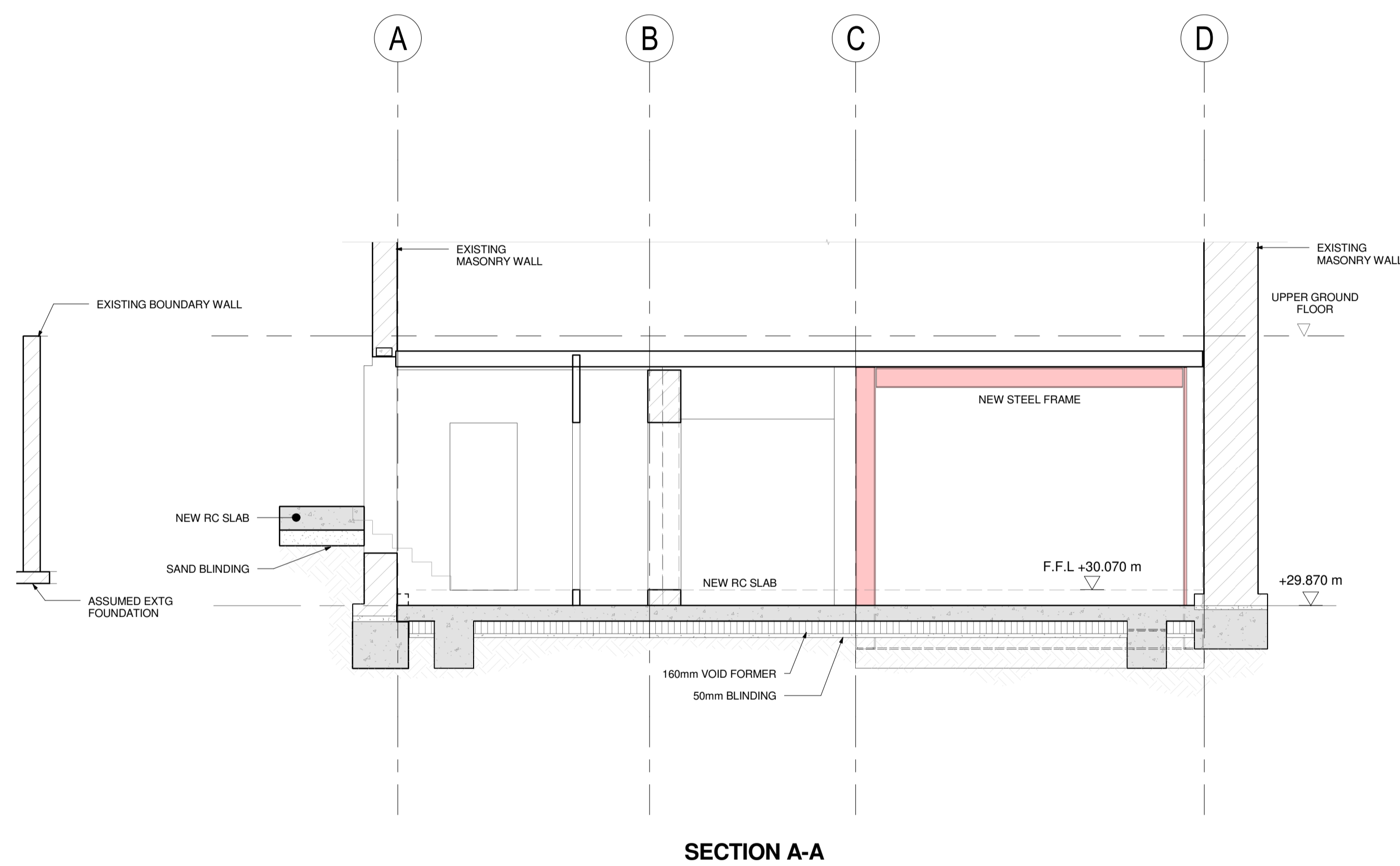
FLUID STRUCTURES
ENGINEERS & TECHNICAL DESIGNERS
Second Floor 21 St. Georges Road London SE1 6ES
Telephone: 020 78207766
E-mail: person@fluidstructures.com
Web: www.fluidstructures.com

Project: 1A REGENT'S PARK ROAD, NW1 7TL

Title:	PROPOSED LOWER GROUND FLOOR PLAN			
Job No: 24679	DRN: IRS	Date: NOV'16		
Scale: 1:50 @A1	CHK: RWS	DRG. No: P090	P1	

GENERAL NOTES

- DO NOT SCALE FROM THESE DRAWINGS.
- THIS DRAWING TO BE READ IN CONJUNCTION WITH ALL RELEVANT ARCHITECTS AND ENGINEERS DRAWINGS, DETAILS AND SPECIFICATIONS.
- THESE NOTES TO BE READ WHEN REFERRING TO ALL DRAWINGS.
- THE WORKS DESCRIBED AND SPECIFIED ON THIS DRAWING AND ASSOCIATED DRAWINGS SHALL BE UNDERTAKEN IN ACCORDANCE WITH ALL CURRENT HEALTH AND SAFETY LEGISLATION.
- THE CONTRACTOR SHALL AT THE OUTSET, ESTABLISH WITH THE LOCAL AUTHORITY THEIR REQUIREMENTS FOR INSPECTING THE WORKS, AND ADHERE TO THESE.
- ALL DIMENSIONS AND LEVELS SHOWN ON THE DRAWINGS ARE BASED ON SURVEY DRAWINGS AND THE CONTRACTOR IS TO SATISFY HIMSELF THAT DIMENSIONS, LEVELS, ETC., ARE SUFFICIENTLY ACCURATE AND COMPLETE FOR FABRICATION WITHIN THE SPECIFIED TOLERANCES OF ALL PREFABRICATED ELEMENTS.



PLANNING ISSUE

REV.	ISSUED FOR PLANNING	IRS	RWS	07/11/16
	REVISION:	DRN:	CHK:	DATE:

REVISION SCHEDULE

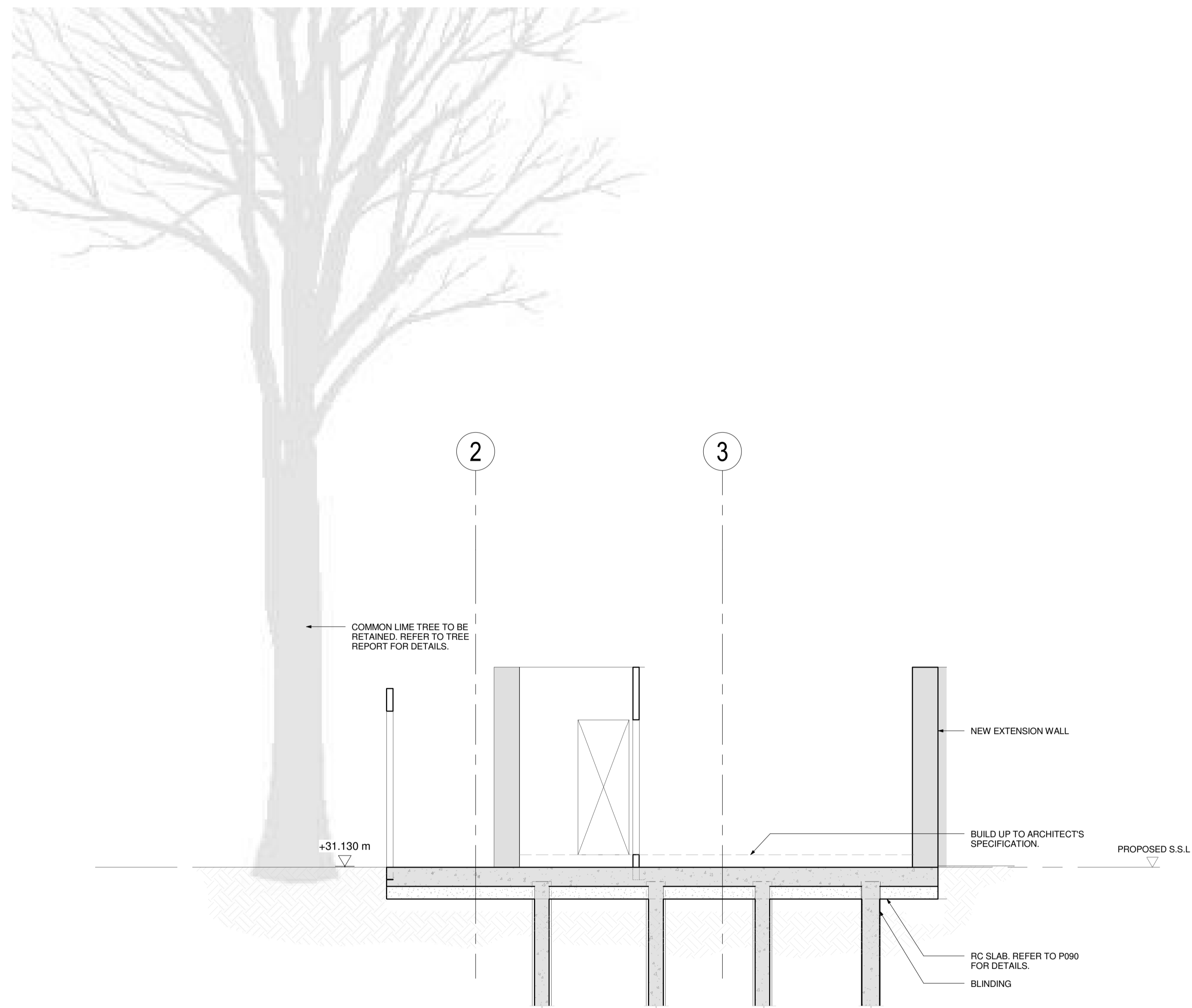
FLUID STRUCTURES
ENGINEERS & TECHNICAL DESIGNERS
Second Floor 21 St. Georges Road London SE1 6ES
Telephone: 020 78207766
E-mail: persons@fluidstructures.com
Web: www.fluidstructures.com

Project: 1A REGENTS PARK ROAD, NW1 7TL

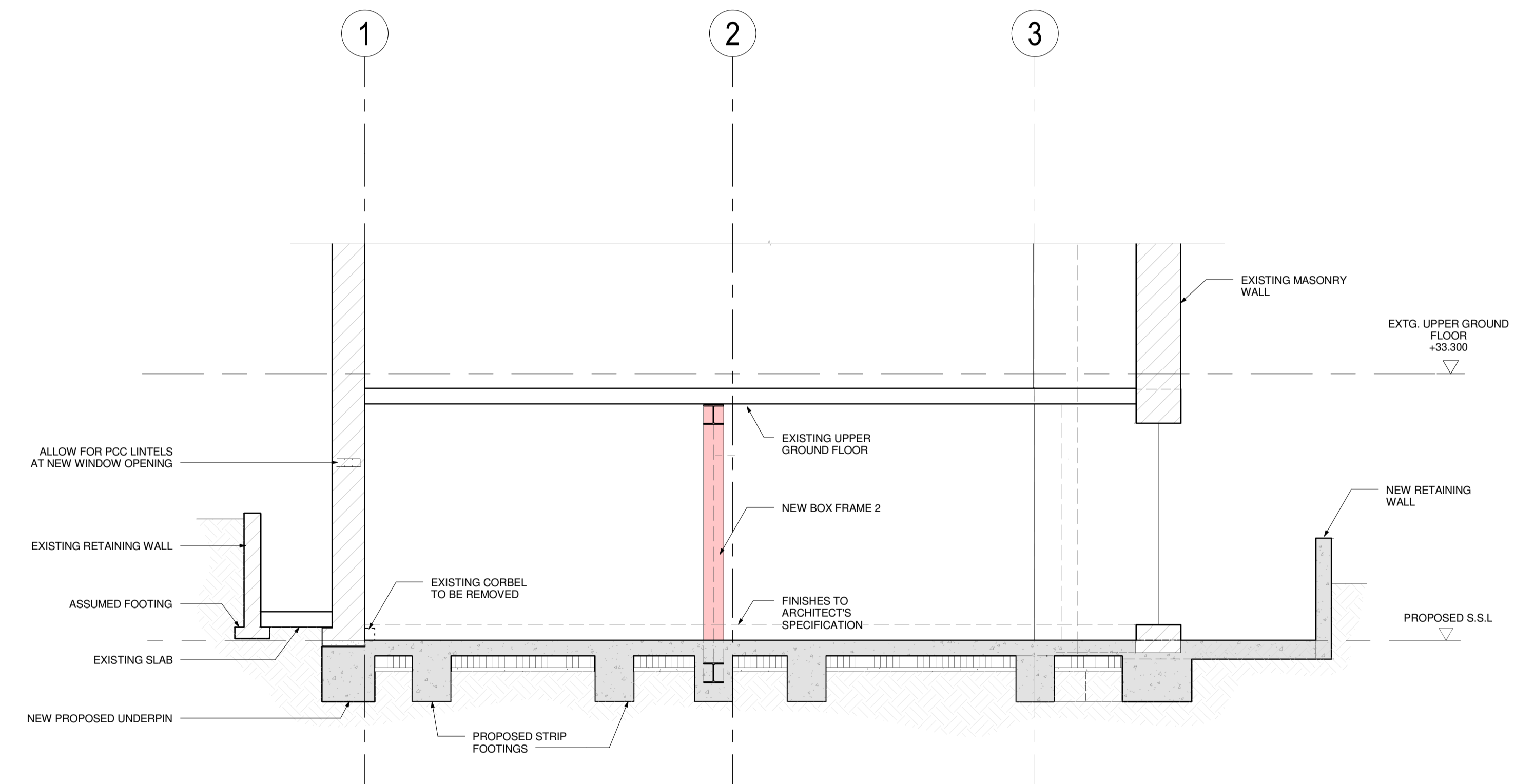
Title:	BUILDING SECTIONS A-A & B-B			
Job No: 24679	DRN: IRS	Date: NOV'16		
Scale: 1:50 @A1	CHK: RWS	DRG. No: S001	P1	

GENERAL NOTES

- DO NOT SCALE FROM THESE DRAWINGS.
- THIS DRAWING TO BE READ IN CONJUNCTION WITH ALL RELEVANT ARCHITECTS AND ENGINEERS DRAWINGS, DETAILS AND SPECIFICATIONS.
- THESE NOTES TO BE READ WHEN REFERRING TO ALL DRAWINGS.
- THE WORKS DESCRIBED AND SPECIFIED ON THIS DRAWING AND ASSOCIATED DRAWINGS SHALL BE UNDERTAKEN IN ACCORDANCE WITH ALL CURRENT HEALTH AND SAFETY LEGISLATION.
- THE CONTRACTOR SHALL AT THE OUTSET, ESTABLISH WITH THE LOCAL AUTHORITY THEIR REQUIREMENTS FOR INSPECTING THE WORKS, AND ADHERE TO THESE.
- ALL DIMENSIONS AND LEVELS SHOWN ON THE DRAWINGS ARE BASED ON SURVEY DRAWINGS AND THE CONTRACTOR IS TO SATISFY HIMSELF THAT DIMENSIONS, LEVELS, ETC., ARE SUFFICIENTLY ACCURATE AND COMPLETE FOR FABRICATION WITHIN THE SPECIFIED TOLERANCES OF ALL PREFABRICATED ELEMENTS.



SECTION C-C



SECTION D-D

PLANNING ISSUE

REV.	ISSUED FOR PLANNING	IRS	RWS	07/11/16
	REVISION:	DRN:	CHK:	DATE:

REVISION SCHEDULE

FLUID STRUCTURES
ENGINEERS & TECHNICAL DESIGNERS
Second Floor 21 St. Georges Road London SE1 6ES
Telephone: 020 78207766
E-mail: persons@fluidstructures.com
Web: www.fluidstructures.com

Project: 1A REGENTS PARK ROAD, NW1 7TL

Title:	BUILDING SECTIONS C-C & D-D			
Job No:	24679	DRN:	IRS	Date: NOV'16
Scale:	1:50 @A1	CHK:	RWS	DRG. No: 5002 P1