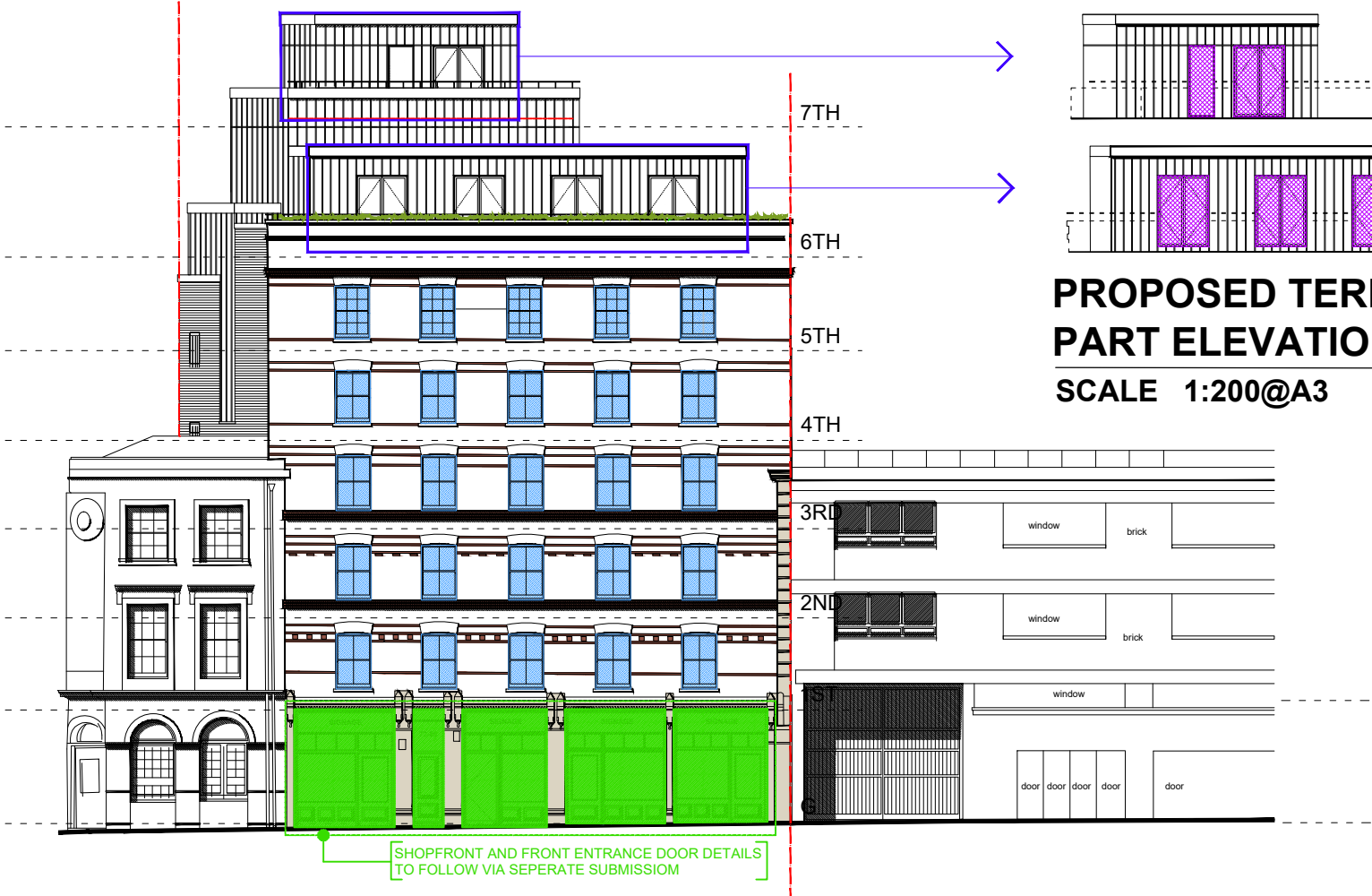


PLANNING REF 2016/6366/P

CONDITION 4a - REQUESTED WINDOW DETAILS

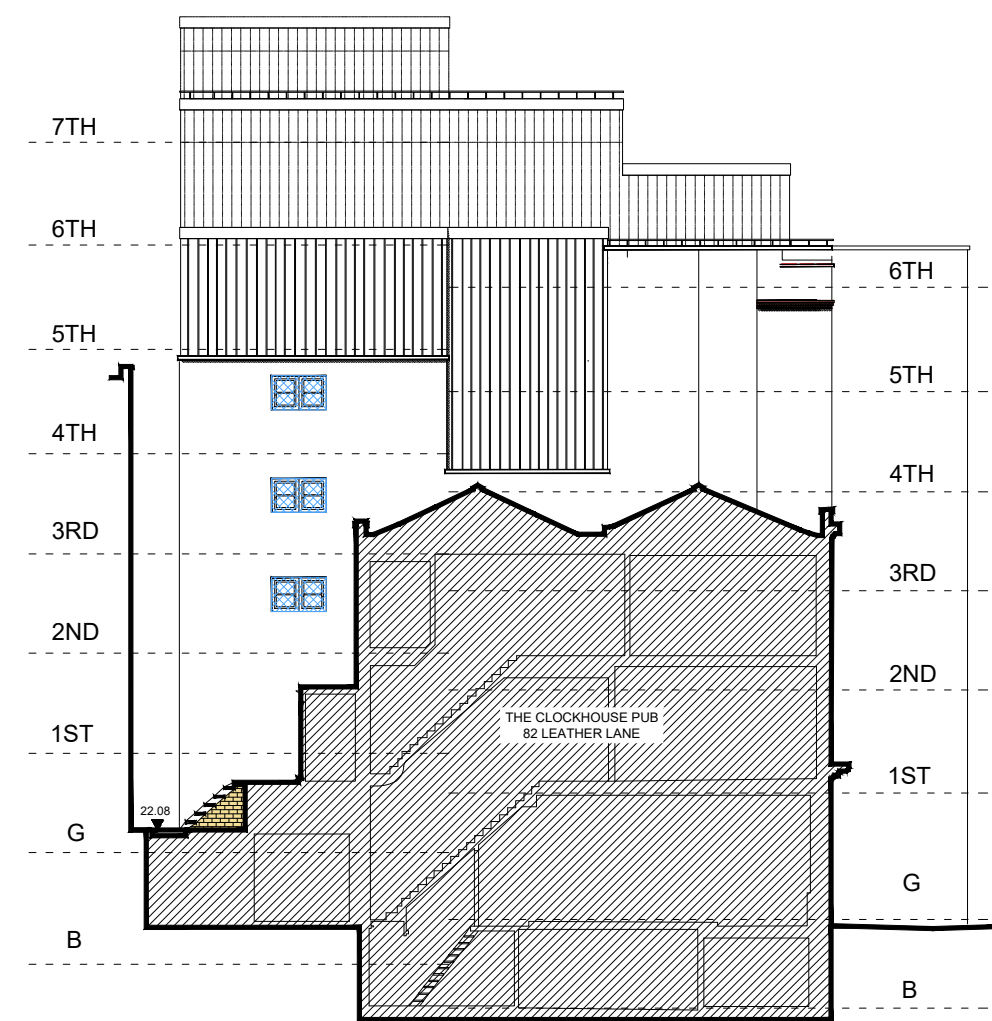
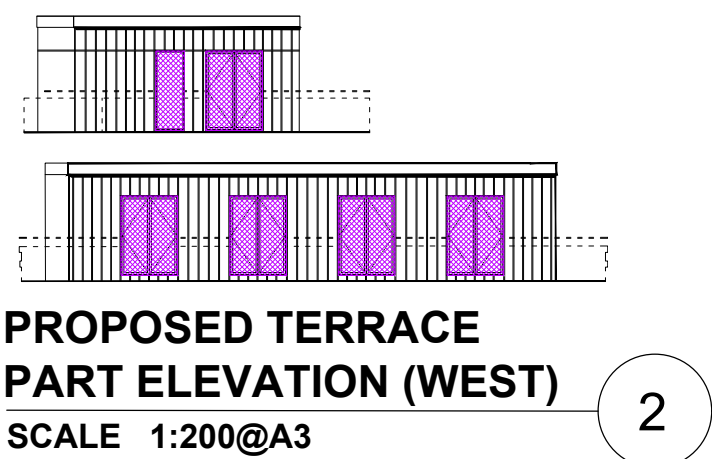
KEY

- REFER TO TIMBER SASH WINDOW TYPE A & B  
DETAILS ON HA LTD DRAWING A141
- REFER TO TIMBER SASH WINDOW TYPE A ON HA LTD  
DRAWING A141
- CONDITION 4b SHOPFRONT DETAILS (TO FOLLOW)
- ALUMINIUM WINDOW TYPE C DETAILS  
ON HA LTD DRAWING A142
- ALUMINIUM WINDOW TYPE D DETAILS  
ON HA LTD DRAWING A143
- ALUMINIUM WINDOW TYPE E DETAILS ON  
HA LTD DRAWING A144
- ALUMINIUM TERRACE DOOR TYPE F  
DETAILS ON HA LTD DRAWING A145



PROPOSED FRONT ELEVATION (WEST)

SCALE 1:200@A3



PROPOSED SIDE ELEVATION (NORTH)

SCALE 1:200@A3

CLIENT: WHITE LION ESTATES LTD.	PROJECT : 72-80 LEATHER LANE LONDON, EC1N 7TR	<div>1. DO NOT SCALE THIS DRAWING</div> <div>2. ALL DIMENSIONS ARE TO BE VERIFIED ON SITE BY THE CONTRACTOR AND REPORTED TO THE ARCHITECT BEFORE CONSTRUCTION</div> <div>3. ANY DISCREPANCY FOUND BETWEEN THIS DRAWING AND ANY OTHER DOCUMENT MUST BE REPORTED IMMEDIATELY TO THE ARCHITECT</div> <div>4. REMOVE THIS DRAWING FROM CURRENCY WHEN A REVISED DRAWING IS ISSUED</div> <div>5. COPYRIGHT OF THIS DRAWING REMAINS WITH HODGES ARCHITECTS LTD</div>	NO DATE REVISION			DRAWING TITLE:			
			A 01.07.21 UPDATED TO REFERENCE ADDITIONAL WINDOW DETAILS			CONDITION 4			
						WINDOW DETAILS - KEY ELEVATIONS			
						SHEET 1			
DRAWN BY : NH	CHECKED BY : SH		DRAWING STATUS: PLANNING			SCALE: 1:200	DATE: 12.03.21	REV.:	A3
						PROJ. NO: 011	DWG NO: A131	A	

HA

HODGES ARCHITECTS LTD

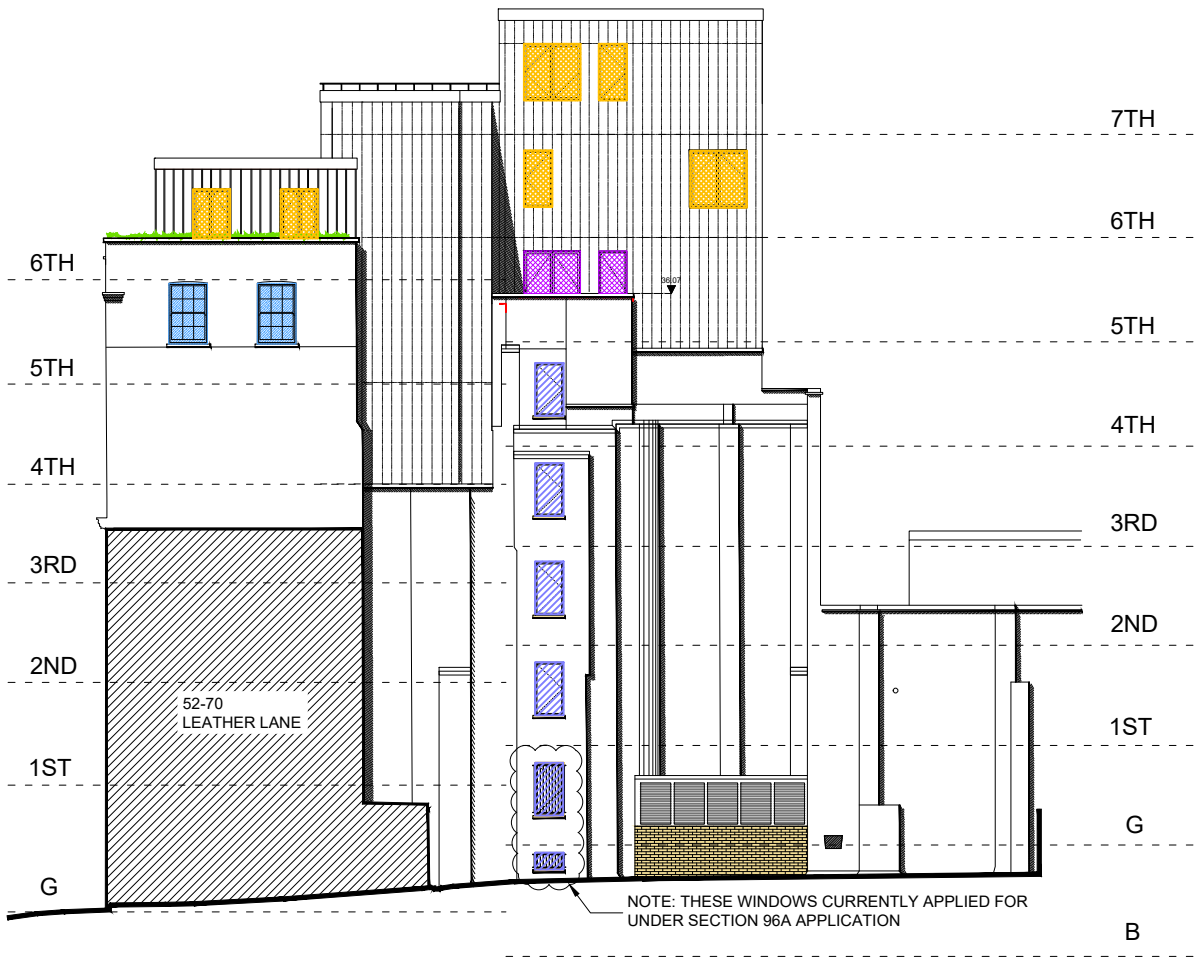
TEL: 07932 376 008  
EMAIL: NH@HODGESARCHITECTS.CO.UK

PLANNING REF 2016/6366/P

CONDITION 4a - REQUESTED WINDOW DETAILS

KEY

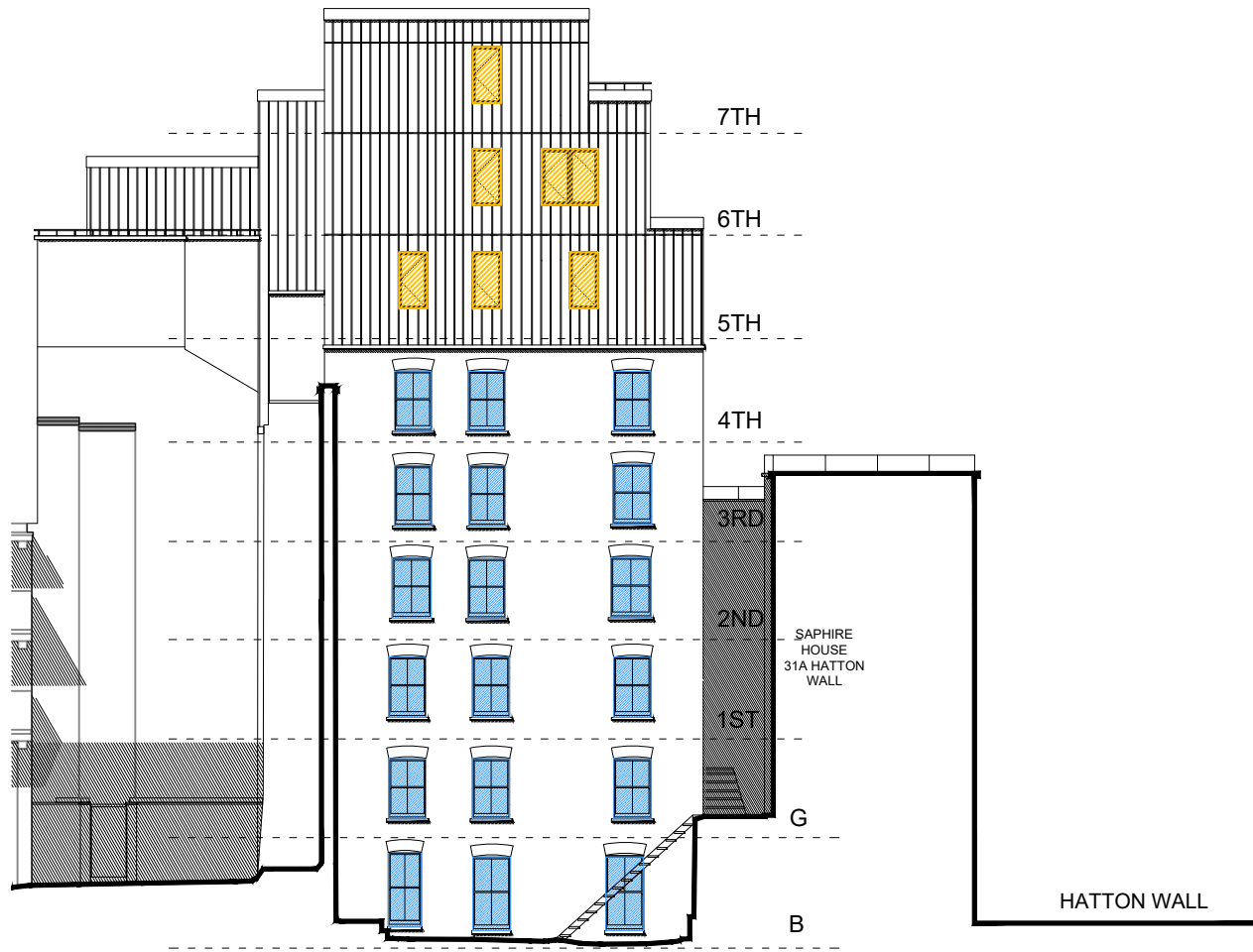
- REFER TO TIMBER SASH WINDOW TYPE A & B  
DETAILS ON HA LTD DRAWING A141
- ALUMINIUM WINDOW TYPE D DETAILS  
ON HA LTD DRAWING A143
- REFER TO TIMBER SASH WINDOW TYPE A ON HA LTD  
DRAWING A141
- ALUMINIUM WINDOW TYPE E DETAILS ON  
HA LTD DRAWING A144
- CONDITION 4b SHOPFRONT DETAILS (TO FOLLOW)
- ALUMINIUM TERRACE DOOR TYPE F  
DETAILS ON HA LTD DRAWING A145
- ALUMINIUM WINDOW TYPE C DETAILS  
ON HA LTD DRAWING A142



PROPOSED SIDE ELEVATION (SOUTH)

SCALE 1:200@A3

1



PROPOSED REAR ELEVATION (EAST)

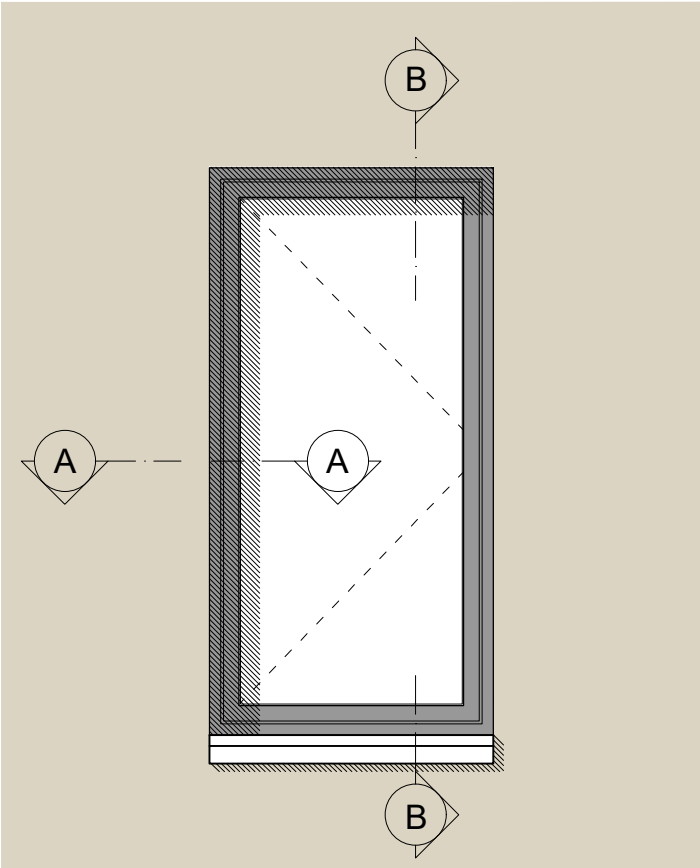
SCALE 1:200@A3

2

CLIENT:  WHITE LION ESTATES LTD.	PROJECT :  72-80 LEATHER LANE LONDON, EC1N 7TR	1. DO NOT SCALE THIS DRAWING 2. ALL DIMENSIONS ARE TO BE VERIFIED ON SITE BY THE CONTRACTOR AND REPORTED TO THE ARCHITECT BEFORE CONSTRUCTION 3. ANY DISCREPANCY FOUND BETWEEN THIS DRAWING AND ANY OTHER DOCUMENT MUST BE REPORTED IMMEDIATELY TO THE ARCHITECT 4. REMOVE THIS DRAWING FROM CURRENCY WHEN A REVISED DRAWING IS ISSUED 5. COPYRIGHT OF THIS DRAWING REMAINS WITH HODGES ARCHITECTS LTD	NO	DATE	REVISION	DRAWING TITLE:  CONDITION 4 WINDOW DETAILS - KEY ELEVATIONS SHEET 2				<div><div>HA</div><div>HODGES ARCHITECTS LTD</div></div> <div>TEL: 07932 376 008 EMAIL: NH@HODGESARCHITECTS.CO.UK</div>			
			A	01.07.21	UPDATED TO REFERENCE ADDITIONAL WINDOW DETAILS								
DRAWN BY : NH	CHECKED BY : SH		DRAWING STATUS: PLANNING			SCALE: 1:200	DATE: 12.03.21	REV.: A	A3				
			PROJ. NO: 011	DWG NO: A132									

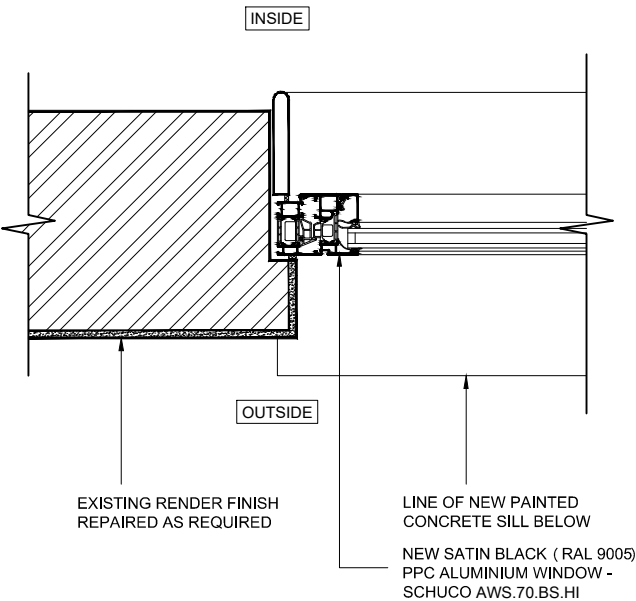
PLANNING REF 2016/6366/P - CONDITION 4a - ALUMINIUM WINDOW DETAILS - TYPE C

FOR WINDOW AND DOOR TYPE LOCATIONS PLEASE REFER TO HA LTD DRAWINGS A131 AND A132



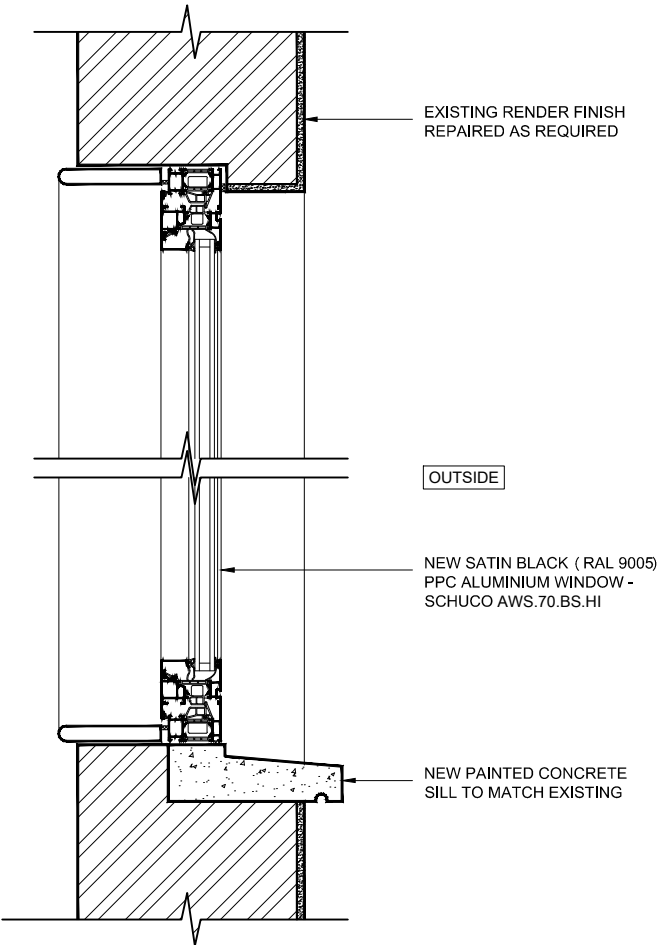
TYPICAL ALUMINIUM WINDOW TYPE C  
SCALE 1:20@A3

1



DETAIL A - A  
SCALE 1:10@A3

2



DETAIL B - B  
SCALE 1:10@A3

3

CLIENT: WHITE LION ESTATES LTD.	PROJECT : 72-80 LEATHER LANE LONDON, EC1N 7TR	1. DO NOT SCALE THIS DRAWING 2. ALL DIMENSIONS ARE TO BE VERIFIED ON SITE BY THE CONTRACTOR AND REPORTED TO THE ARCHITECT BEFORE CONSTRUCTION 3. ANY DISCREPANCY FOUND BETWEEN THIS DRAWING AND ANY OTHER DOCUMENT MUST BE REPORTED IMMEDIATELY TO THE ARCHITECT 4. REMOVE THIS DRAWING FROM CURRENCY WHEN A REVISED DRAWING IS ISSUED 5. COPYRIGHT OF THIS DRAWING REMAINS WITH HODGES ARCHITECTS LTD	NO	DATE	REVISION	DRAWING TITLE: CONDITION 4a ALUMINIUM WINDOW DETAILS TYPE C			A3
DRAWN BY : NH	CHECKED BY : SH					SCALE: AS NOTED	DATE: 12.03.21	REV.:	
						PROJ. NO: 011	DWG NO: A142		
			DRAWING STATUS: PLANNING						

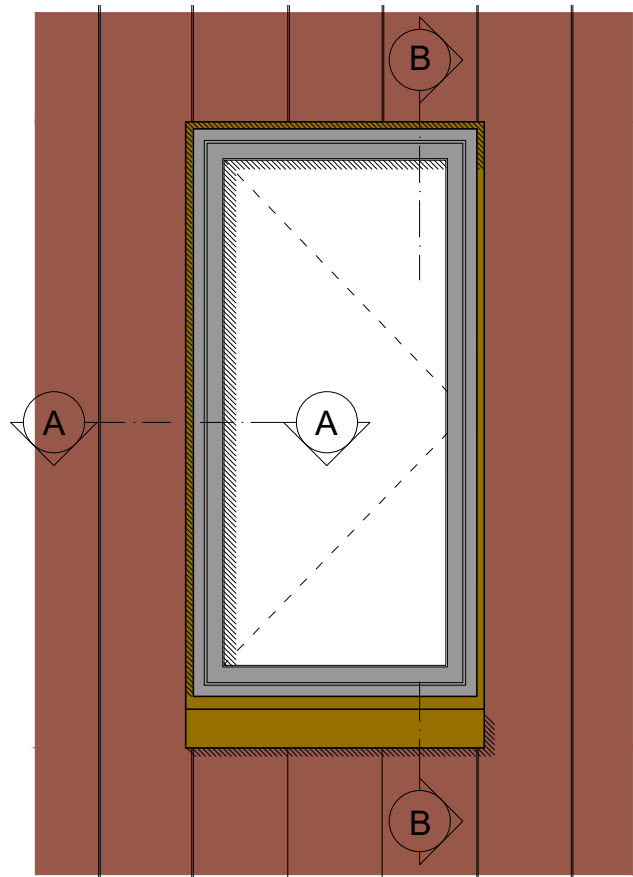
HA

HODGES ARCHITECTS LTD

TEL: 07932 376 008  
EMAIL: NH@HODGESARCHITECTS.CO.UK

PLANNING REF 2016/6366/P - CONDITION 4a - ALUMINIUM WINDOW DETAILS - TYPE D

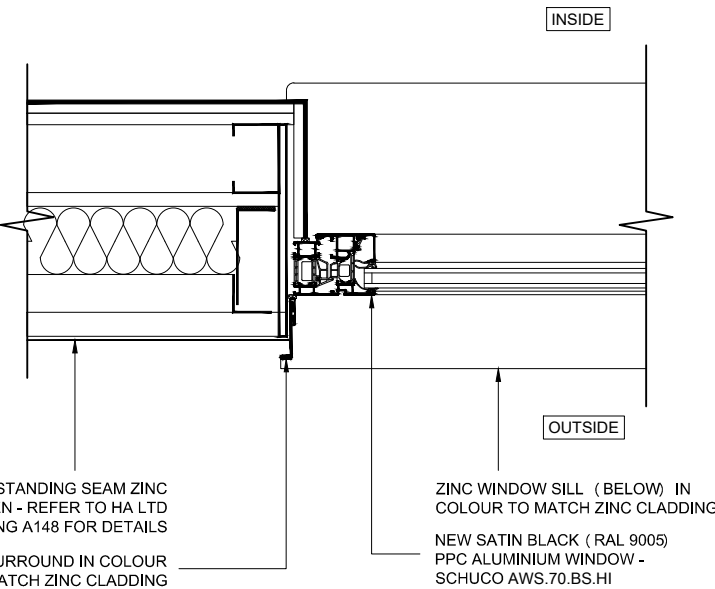
FOR WINDOW AND DOOR TYPE LOCATIONS PLEASE REFER TO HA LTD DRAWINGS A131 AND A132



TYPICAL ALUMINIUM WINDOW TYPE D

SCALE 1:20@A3

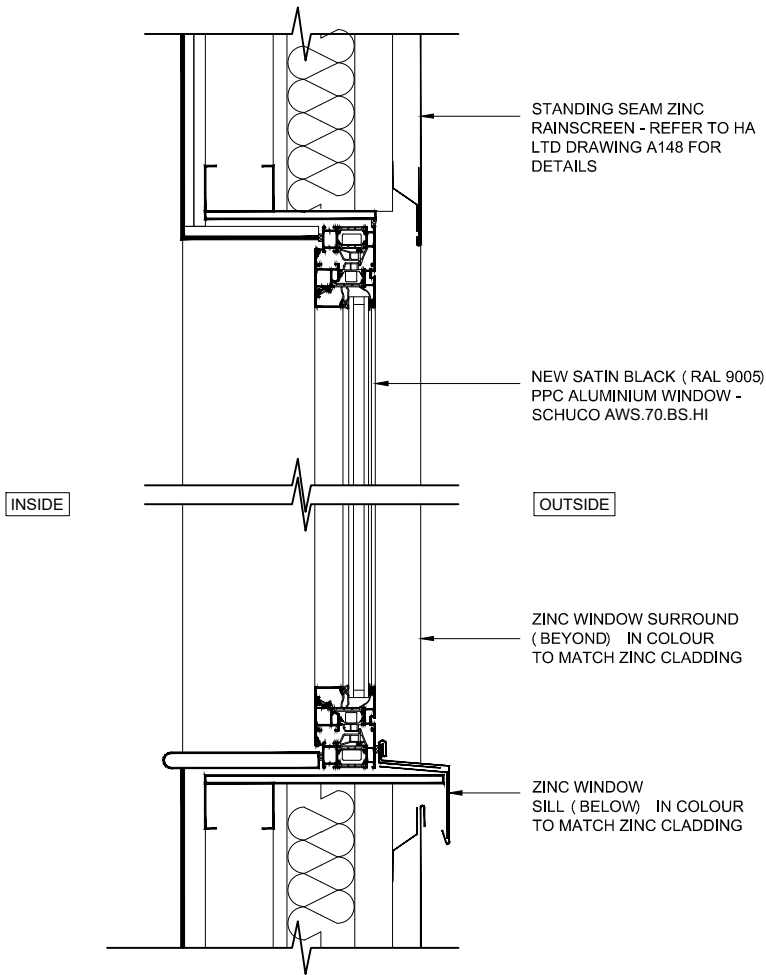
1



DETAIL A - A

SCALE 1:10@A3

2



DETAIL B - B

SCALE 1:10@A3

3

CLIENT: WHITE LION ESTATES LTD.	PROJECT : 72-80 LEATHER LANE LONDON, EC1N 7TR	<div>1. DO NOT SCALE THIS DRAWING</div> <div>2. ALL DIMENSIONS ARE TO BE VERIFIED ON SITE BY THE CONTRACTOR AND REPORTED TO THE ARCHITECT BEFORE CONSTRUCTION</div> <div>3. ANY DISCREPANCY FOUND BETWEEN THIS DRAWING AND ANY OTHER DOCUMENT MUST BE REPORTED IMMEDIATELY TO THE ARCHITECT</div> <div>4. REMOVE THIS DRAWING FROM CURRENCY WHEN A REVISED DRAWING IS ISSUED</div> <div>5. COPYRIGHT OF THIS DRAWING REMAINS WITH HODGES ARCHITECTS LTD</div>	NO DATE REVISION		DRAWING TITLE: CONDITION 4a ALUMINIUM WINDOW DETAILS TYPE D			A3
			DRAWING STATUS: PLANNING		SCALE: AS NOTED	DATE: 12.03.21	REV.:	
DRAWN BY : NH	CHECKED BY : SH				PROJ. NO: 011	DWG NO: A143		

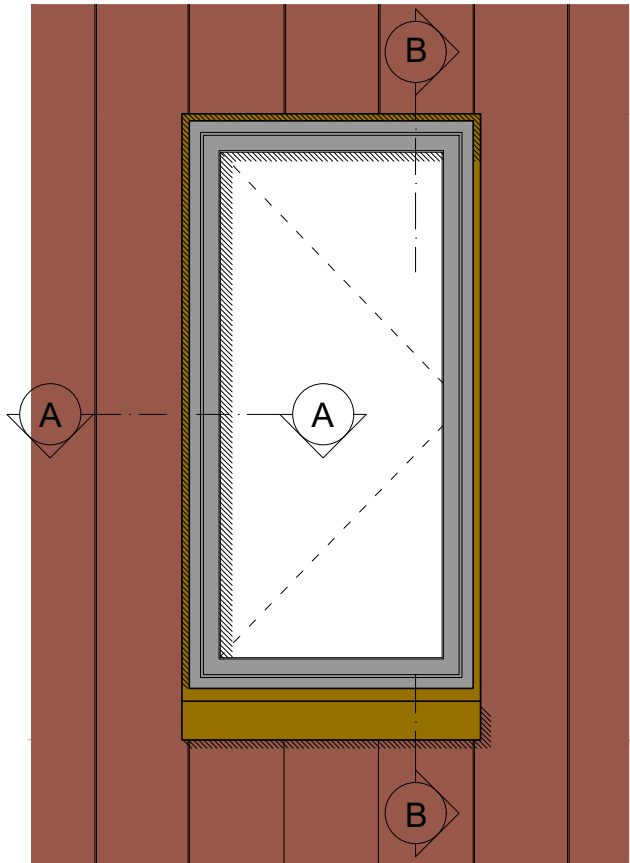
HA

HODGES ARCHITECTS LTD

TEL: 07932 376 008  
EMAIL: NH@HODGESARCHITECTS.CO.UK

PLANNING REF 2016/6366/P - CONDITION 4a - ALUMINIUM WINDOW DETAILS - TYPE E

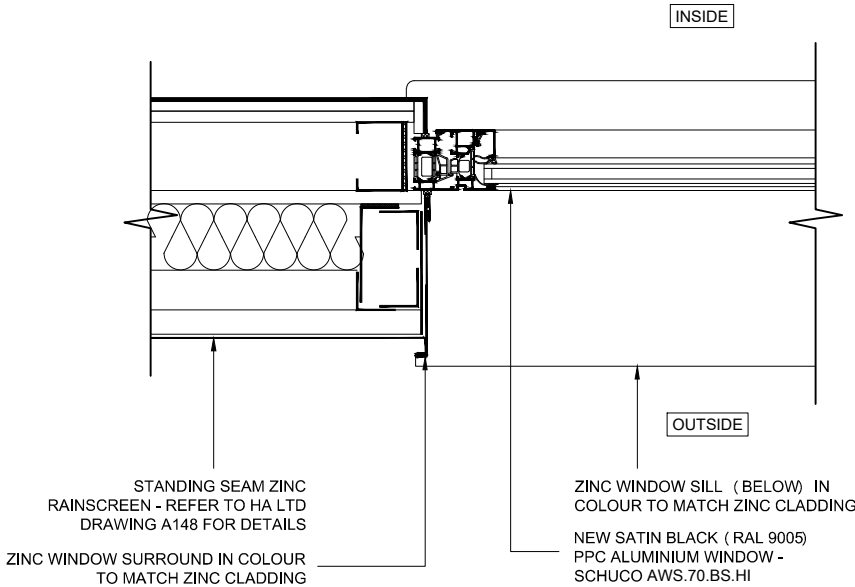
FOR WINDOW AND DOOR TYPE LOCATIONS PLEASE REFER TO HA LTD DRAWINGS A131 AND A132



TYPICAL ALUMINIUM WINDOW TYPE E

SCALE 1:20@A3

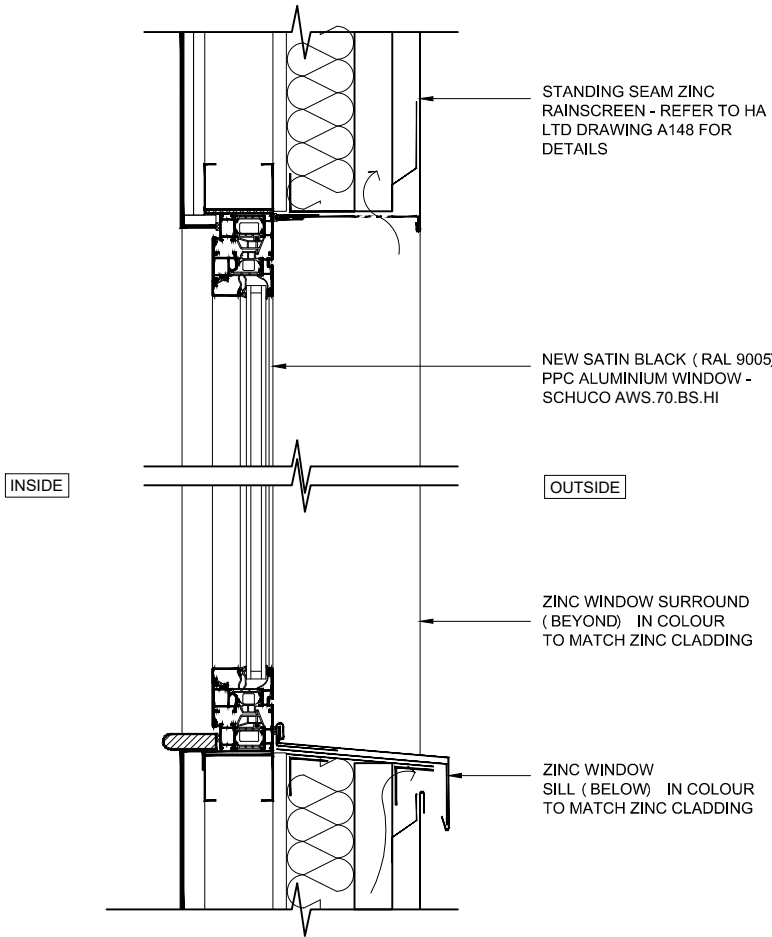
1



DETAIL A - A

SCALE 1:10@A3

2



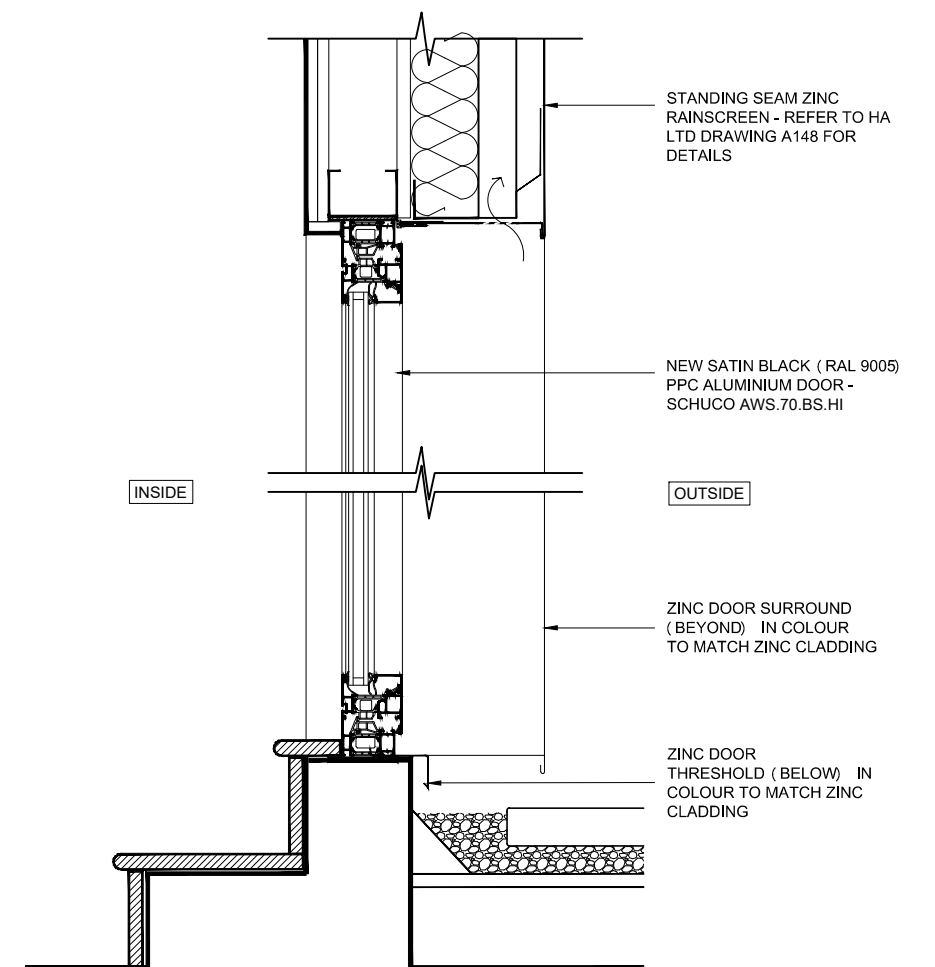
DETAIL B - B

SCALE 1:10@A3

3

CLIENT: WHITE LION ESTATES LTD.	PROJECT : 72-80 LEATHER LANE LONDON, EC1N 7TR	1. DO NOT SCALE THIS DRAWING 2. ALL DIMENSIONS ARE TO BE VERIFIED ON SITE BY THE CONTRACTOR AND REPORTED TO THE ARCHITECT BEFORE CONSTRUCTION 3. ANY DISCREPANCY FOUND BETWEEN THIS DRAWING AND ANY OTHER DOCUMENT MUST BE REPORTED IMMEDIATELY TO THE ARCHITECT 4. REMOVE THIS DRAWING FROM CURRENCY WHEN A REVISED DRAWING IS ISSUED 5. COPYRIGHT OF THIS DRAWING REMAINS WITH HODGES ARCHITECTS LTD	NO DATE REVISION			DRAWING TITLE: CONDITION 4a ALUMINIUM WINDOW DETAILS TYPE E				<div><div>HA</div><div>HODGES ARCHITECTS LTD</div><div>TEL: 07932 376 008 EMAIL: NH@HODGESARCHITECTS.CO.UK</div></div>
			DRAWING STATUS: PLANNING			SCALE: AS NOTED	DATE: 12.03.21	REV.:	A3	
						PROJ. NO: 011	DWG NO: A144			
DRAWN BY : NH	CHECKED BY : SH									


**FOR WINDOW AND DOOR TYPE LOCATIONS PLEASE REFER TO HA LTD DRAWINGS A131 AND A132**



**SCALE 1:20@A3**

**SCALE 1:10@A3**

**SCALE 1:10@A3**

CLIENT: WHITE LION ESTATES LTD.	PROJECT : 72-80 LEATHER LANE LONDON, EC1N 7TR	1. DO NOT SCALE THIS DRAWING 2. ALL DIMENSIONS ARE TO BE VERIFIED ON SITE BY THE CONTRACTOR AND REPORTED TO THE ARCHITECT BEFORE CONSTRUCTION 3. ANY DISCREPANCY FOUND BETWEEN THIS DRAWING AND ANY OTHER DOCUMENT MUST BE REPORTED IMMEDIATELY TO THE ARCHITECT 4. REMOVE THIS DRAWING FROM CURRENCY WHEN A REVISED DRAWING IS ISSUED 5. COPYRIGHT OF THIS DRAWING REMAINS WITH HODGES ARCHITECTS LTD	NO	DATE	REVISION	DRAWING TITLE: CONDITION 4a ALUMINIUM TERRACE DOOR DETAILS TYPE F				 HODGES ARCHITECTS LTD  TEL: 07932 376 008 EMAIL: NH@HODGESARCHITECTS.CO.UK
DRAWN BY : NH	CHECKED BY : SH					DRAWING STATUS: PLANNING				
						SCALE: AS NOTED	DATE: 12.03.21	REV.:	A3	
						PROJ. NO: 011	DWG NO: A145			

PLANNING REF 2016/6366/P - CONDITION 4a - PROPOSED GRILLES AND FLUES TO BRICKWORK ELEMENTS

CAST IRON VENTILATION GRILLE - SPECIFICATION

MANUFACTURER: THE CAST IRON AIR BRICK COMPANY  
PRODUCT: GRID3 AIR BRICK  
MATERIAL: BLACK PAINTED CAST IRON  
SIZE: 75mm X 225mm



BOILER FLUE - SPECIFICATION

MANUFACTURER: GENERIC  
PRODUCT: BOILER FLUE  
MATERIAL: BLACK UPVC  
SIZE: OUTER DIAMETER 100mm



PROPOSED CAST IRON VENTILATION GRILLE - BRICKWORK AREAS

SCALE: N/A

1

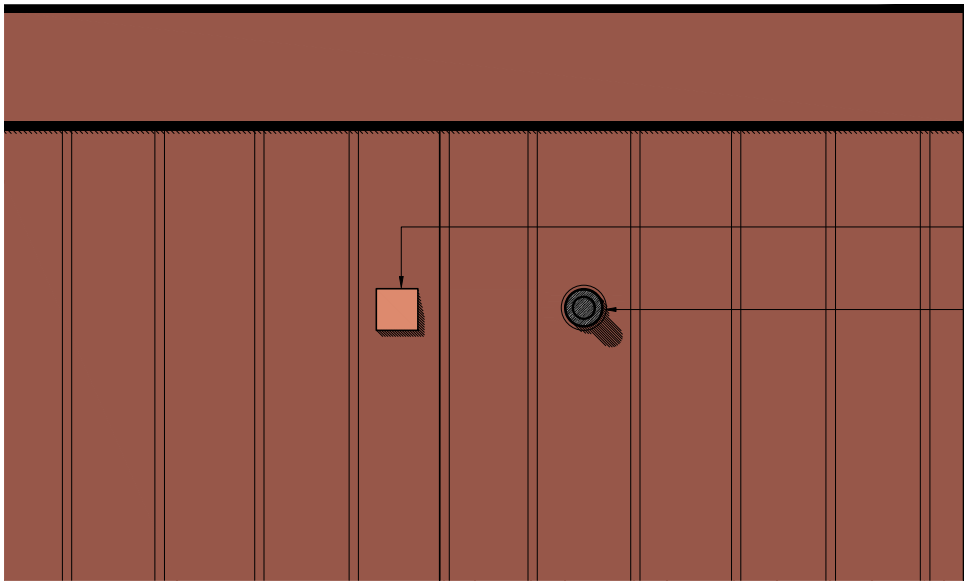
TYPICAL BOILER FLUE

SCALE: N/A

1

CLIENT: WHITE LION ESTATES LTD.	PROJECT : 72-80 LEATHER LANE LONDON, EC1N 7TR	<div>1. DO NOT SCALE THIS DRAWING</div> <div>2. ALL DIMENSIONS ARE TO BE VERIFIED ON SITE BY THE CONTRACTOR AND REPORTED TO THE ARCHITECT BEFORE CONSTRUCTION</div> <div>3. ANY DISCREPANCY FOUND BETWEEN THIS DRAWING AND ANY OTHER DOCUMENT MUST BE REPORTED IMMEDIATELY TO THE ARCHITECT</div> <div>4. REMOVE THIS DRAWING FROM CURRENCY WHEN A REVISED DRAWING IS ISSUED</div> <div>5. COPYRIGHT OF THIS DRAWING REMAINS WITH HODGES ARCHITECTS LTD</div>	NO		DATE		REVISION		DRAWING TITLE: CONDITION 4a VENTILATION GRILLE AND GAS FLUE BRICKWORK ELEMENTS				<div><div>HA</div><div>HODGES ARCHITECTS LTD</div><div>TEL: 07932 376 008</div><div>EMAIL: NH@HODGESARCHITECTS.CO.UK</div></div>
			DRAWN BY : NH	CHECKED BY : SH	DRAWING STATUS: PLANNING							SCALE: AS NOTED	
							PROJ. NO: 011	DWG NO: A146					

PLANNING REF 2016/6366/P - CONDITION 4a - PROPOSED GRILLES TO RAINSCREEN ELEMENTS



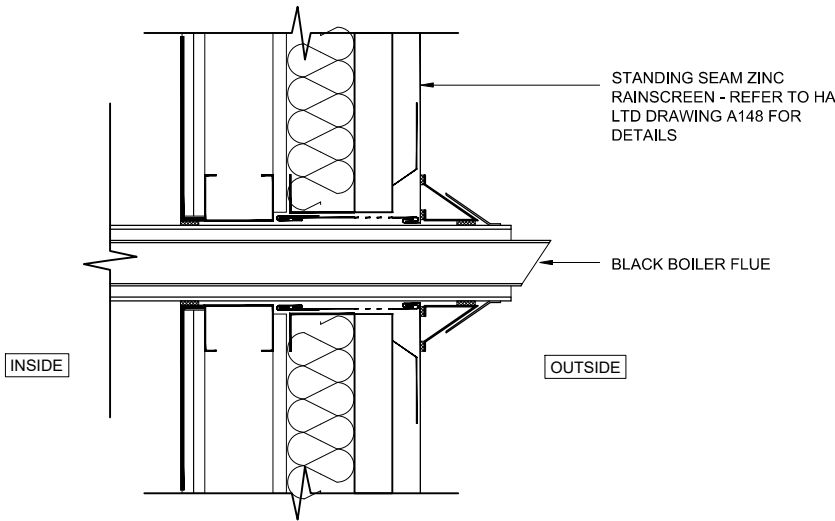
BROWN COLOURED VENTILATION COWL - DIMENSIONS 120x120mm

BLACK COLOURED BOILER FLUE - DIMENSIONS 100mm DIA.

PART ELEVATION SHOWING TYPICAL SERVICE VENTS

SCALE: 1:20

1



SECTION DETAIL SHOWING TYPICAL BOILER FLUE PENETRATION

SCALE: 1:10

3



PROPOSED BROWN COLOURED VENTILATION COWL TO RAINSCREEN ELEMENTS

SCALE: N/A

2



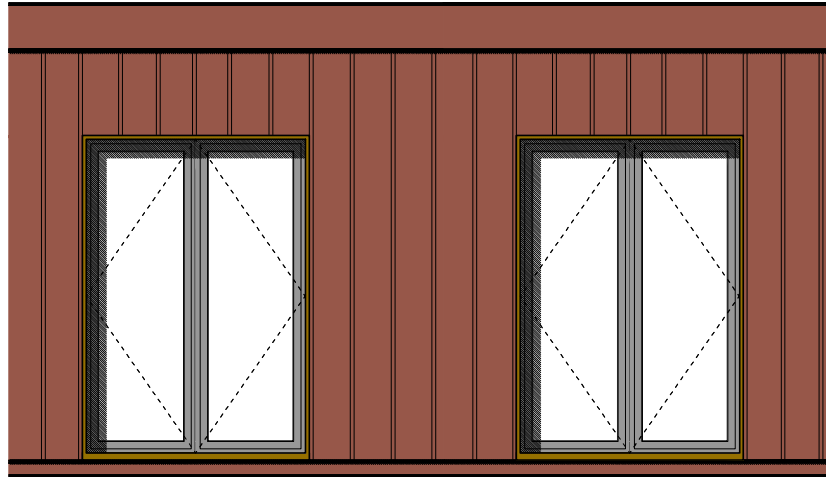
TYPICAL BLACK COLOURED BOILER FLUE

SCALE: N/A

4

CLIENT: WHITE LION ESTATES LTD.	PROJECT : 72-80 LEATHER LANE LONDON, EC1N 7TR	1. DO NOT SCALE THIS DRAWING 2. ALL DIMENSIONS ARE TO BE VERIFIED ON SITE BY THE CONTRACTOR AND REPORTED TO THE ARCHITECT BEFORE CONSTRUCTION 3. ANY DISCREPANCY FOUND BETWEEN THIS DRAWING AND ANY OTHER DOCUMENT MUST BE REPORTED IMMEDIATELY TO THE ARCHITECT 4. REMOVE THIS DRAWING FROM CURRENCY WHEN A REVISED DRAWING IS ISSUED 5. COPYRIGHT OF THIS DRAWING REMAINS WITH HODGES ARCHITECTS LTD	NO DATE REVISION			DRAWING TITLE:			<div><div>HA</div><div>HODGES ARCHITECTS LTD</div><div>TEL: 07932 376 008 EMAIL: NH@HODGESARCHITECTS.CO.UK</div></div>
						CONDITION 4a			
						VENTILATION GRILLES AND FLUES			
						RAINSREEN ELEMENTS			
DRAWN BY : NH	CHECKED BY : SH		DRAWING STATUS: PLANNING			SCALE: AS NOTED	DATE: 12.03.21	REV.:	A3
						PROJ. NO: 011	DWG NO: A147		

## PLANNING REF 2016/6366/P - CONDITION 4c - ZINC CLADDING TO UPPER FLOORS



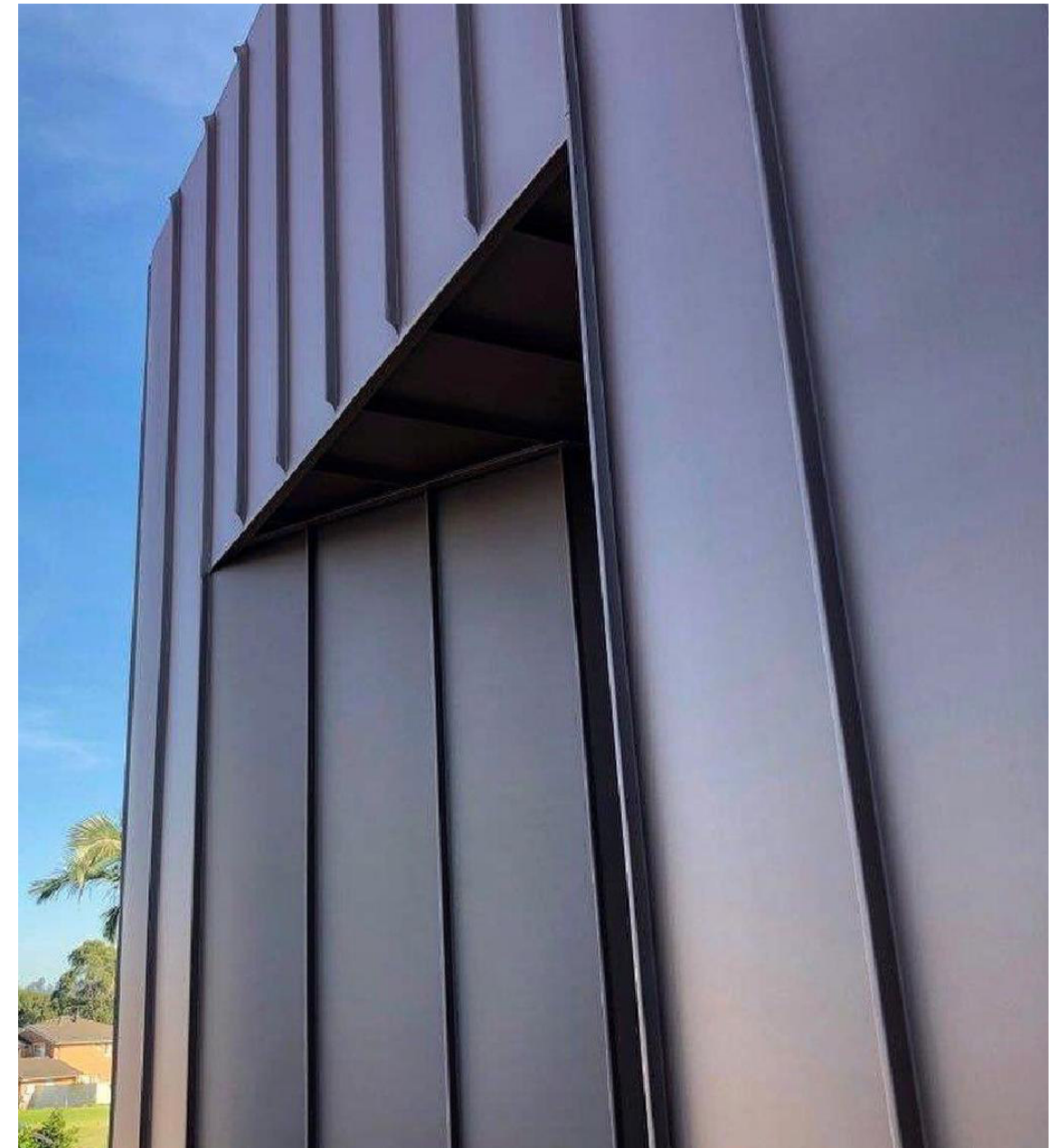
## RAINSCREEN CLADDING SPECIFICATION

MANUFACTURER: VM ZINC  
CLADDING MATERIAL: ZINC  
CLADDING TYPE: 25MM STANDING SEAM  
COLOUR: PIGMENTO RED

### PART ELEVATION SHOWING TYPICAL ZINC RAINSCREEN

**SCALE: 1:20@A3**

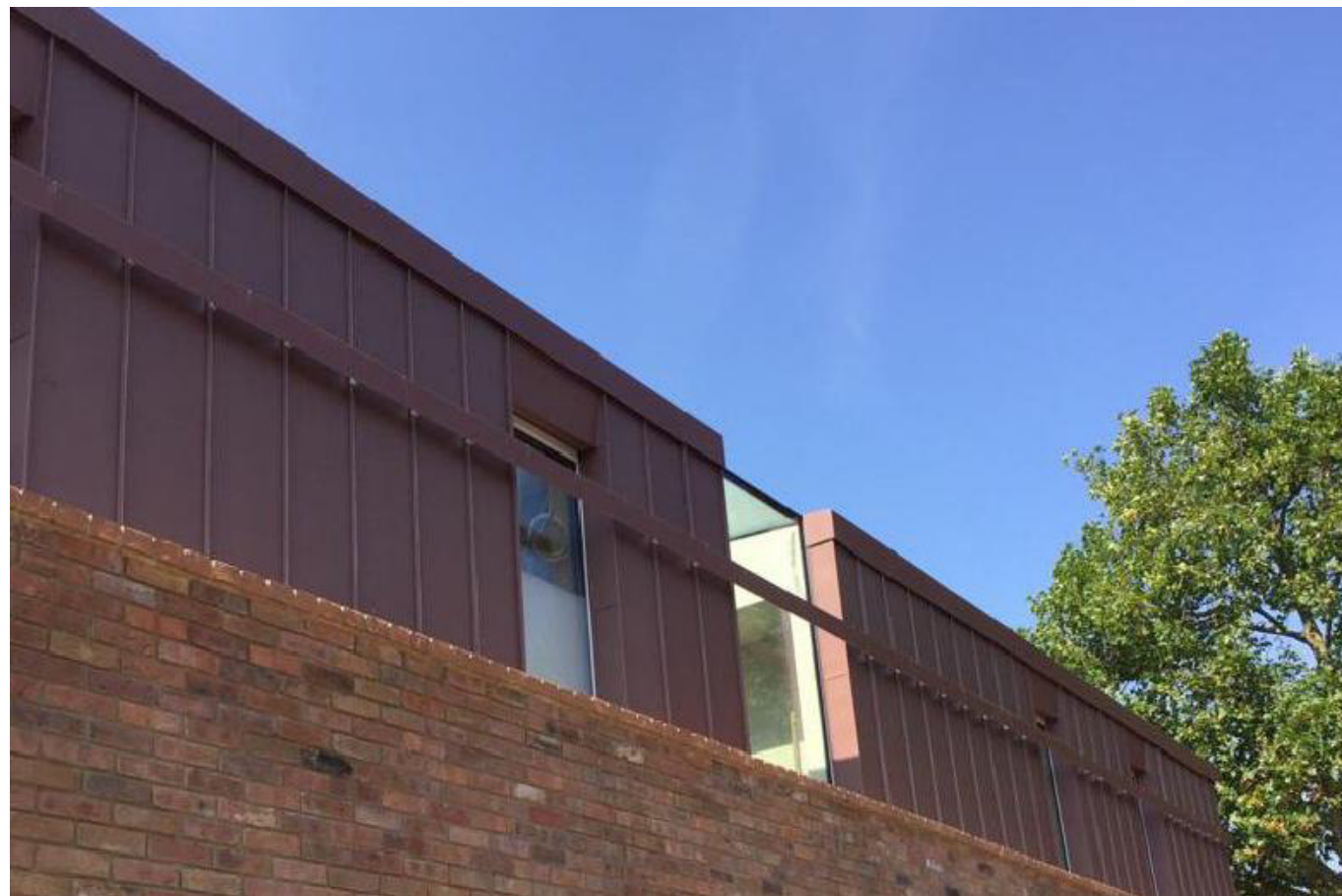
1



## EXAMPLE OF STANDING SEAM ZINC RAINSCREEN IN "PIGMENTO RED"

**SCALE: NTS**

3



## EXAMPLE OF STANDING SEAM ZINC RAINSCREEN IN "PIGMENTO RED"

**SCALE: NTS**

2

CLIENT: WHITE LION ESTATES LTD.	PROJECT : 72-80 LEATHER LANE LONDON, EC1N 7TR	1. DO NOT SCALE THIS DRAWING 2. ALL DIMENSIONS ARE TO BE VERIFIED ON SITE BY THE CONTRACTOR AND REPORTED TO THE ARCHITECT BEFORE CONSTRUCTION 3. ANY DISCREPANCY FOUND BETWEEN THIS DRAWING AND ANY OTHER DOCUMENT MUST BE REPORTED IMMEDIATELY TO THE ARCHITECT 4. REMOVE THIS DRAWING FROM CURRENCY WHEN A REVISED DRAWING IS ISSUED 5. COPYRIGHT OF THIS DRAWING REMAINS WITH HODGES ARCHITECTS LTD	NO	DATE	REVISION	DRAWING TITLE:			
						CONDITION 4c			
						PROPOSED ZINC RAINSCREEN			
						SPECIFICATION			
DRAWN BY : NH	CHECKED BY : SH		DRAWING STATUS: PLANNING			SCALE: AS NOTED	DATE: 02.05.21	REV.:	A3
						PROJ. NO: 011	DWG NO: A148		

**HODGES ARCHITECTS LTD**

TEL: 07932 376 008

EMAIL: NH@HODGESARCHITECTS.CO.UK

**PLANNING REF 2016/6366/P - CONDITION 4c - RECLAIMED LONDON YELLOW STOCK BRICKWORK**



## EXISTING LIGHTWELL WALL

**ORIGINAL REUSABLE BRICKS WILL BE RETAINED AND REUSED FROM THE BUILDING ELEMENTS NOTED TO BE DEMOLISHED**

**SCALE: NTS**




## EXISTING YELLOW STOCK BRICKS

**SAMPLES ARE AVAILABLE FOR INSPECTION ON SITE**

**SCALE: NTS**

2

1

CLIENT: WHITE LION ESTATES LTD.	PROJECT : 72-80 LEATHER LANE LONDON, EC1N 7TR	1. DO NOT SCALE THIS DRAWING 2. ALL DIMENSIONS ARE TO BE VERIFIED ON SITE BY THE CONTRACTOR AND REPORTED TO THE ARCHITECT BEFORE CONSTRUCTION 3. ANY DISCREPANCY FOUND BETWEEN THIS DRAWING AND ANY OTHER DOCUMENT MUST BE REPORTED IMMEDIATELY TO THE ARCHITECT 4. REMOVE THIS DRAWING FROM CURRENCY WHEN A REVISED DRAWING IS ISSUED 5. COPYRIGHT OF THIS DRAWING REMAINS WITH HODGES ARCHITECTS LTD	NO	DATE	REVISION	DRAWING TITLE: CONDITION 4c YELLOW STOCK BRICKWORK SPECIFICATION				 HODGES ARCHITECTS LTD  TEL: 07932 376 008 EMAIL: NH@HODGESARCHITECTS.CO.UK
DRAWN BY : NH	CHECKED BY : SH					DRAWING STATUS: PLANNING				
						SCALE: AS NOTED	DATE: 02.05.21	REV.:	A3	
						PROJ. NO: 011	DWG NO: A149			