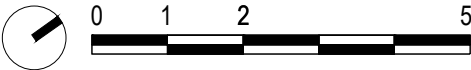
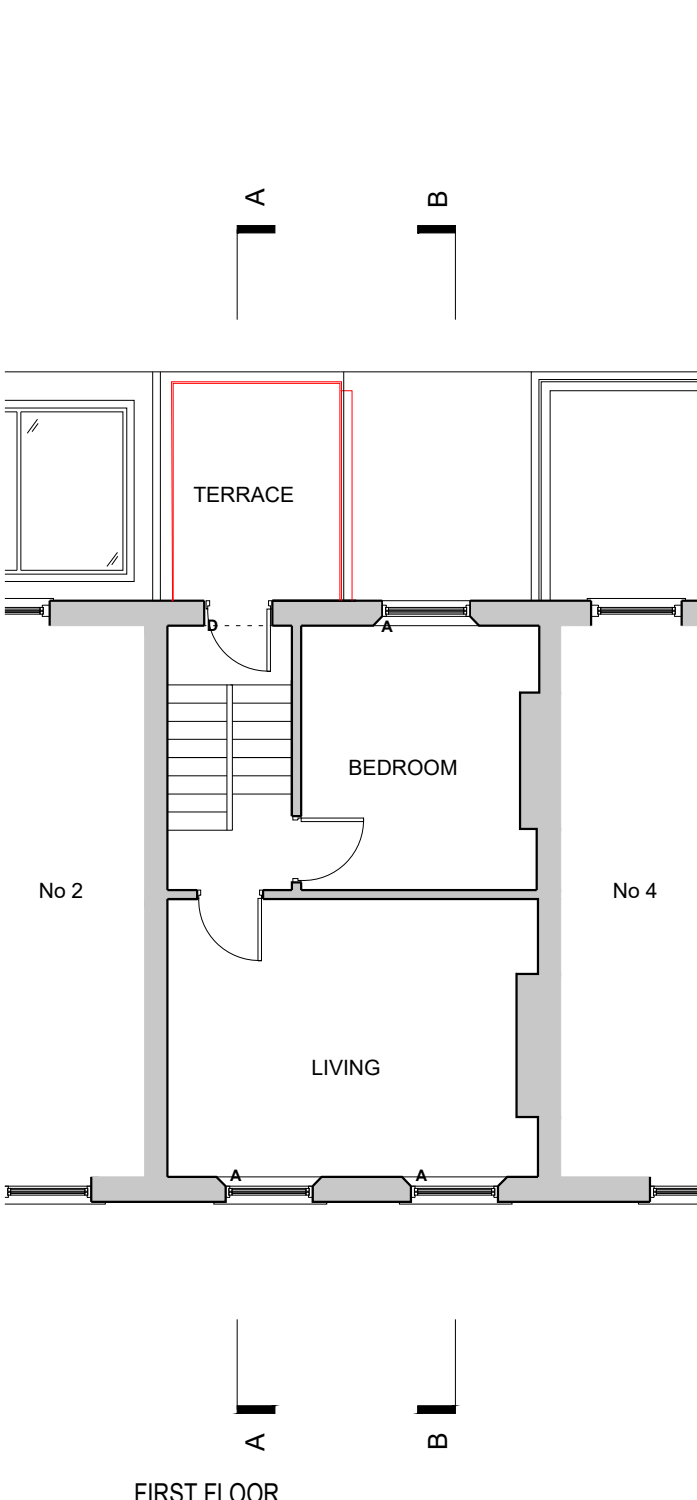
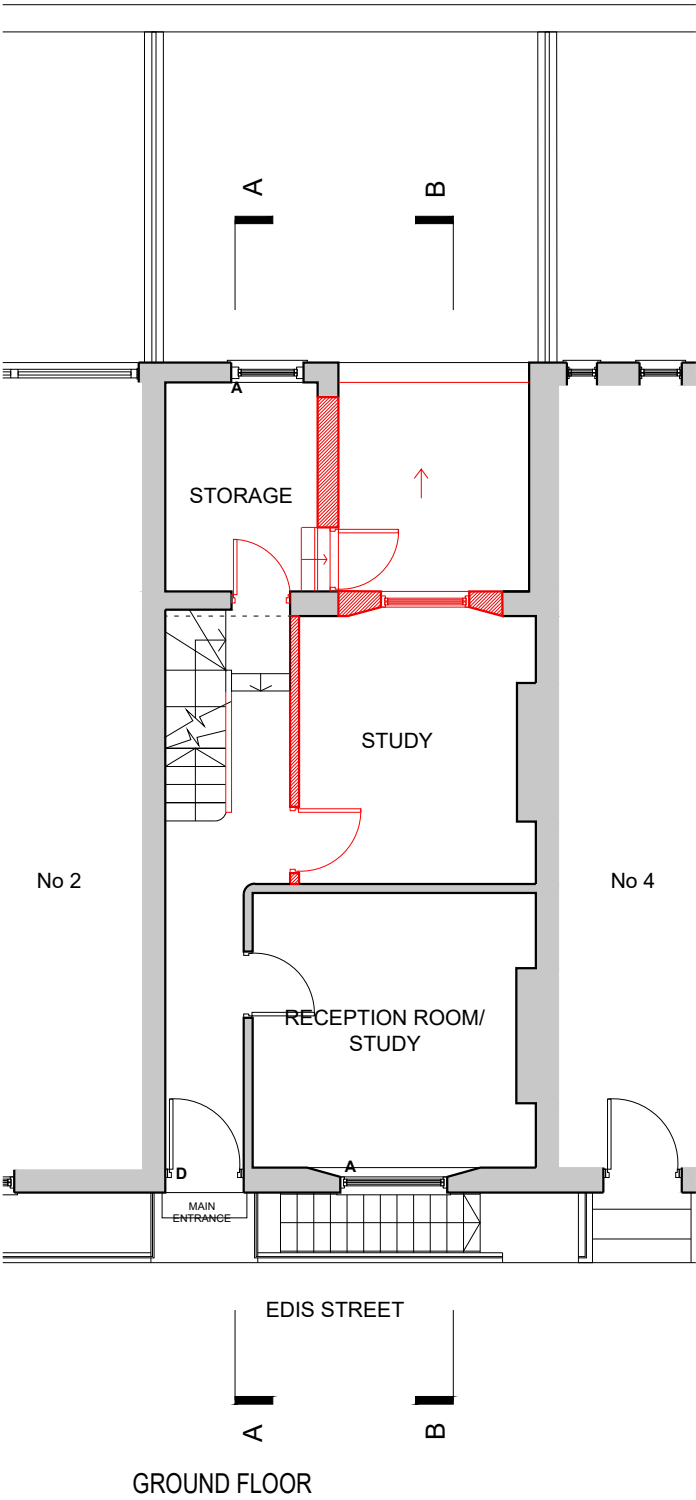
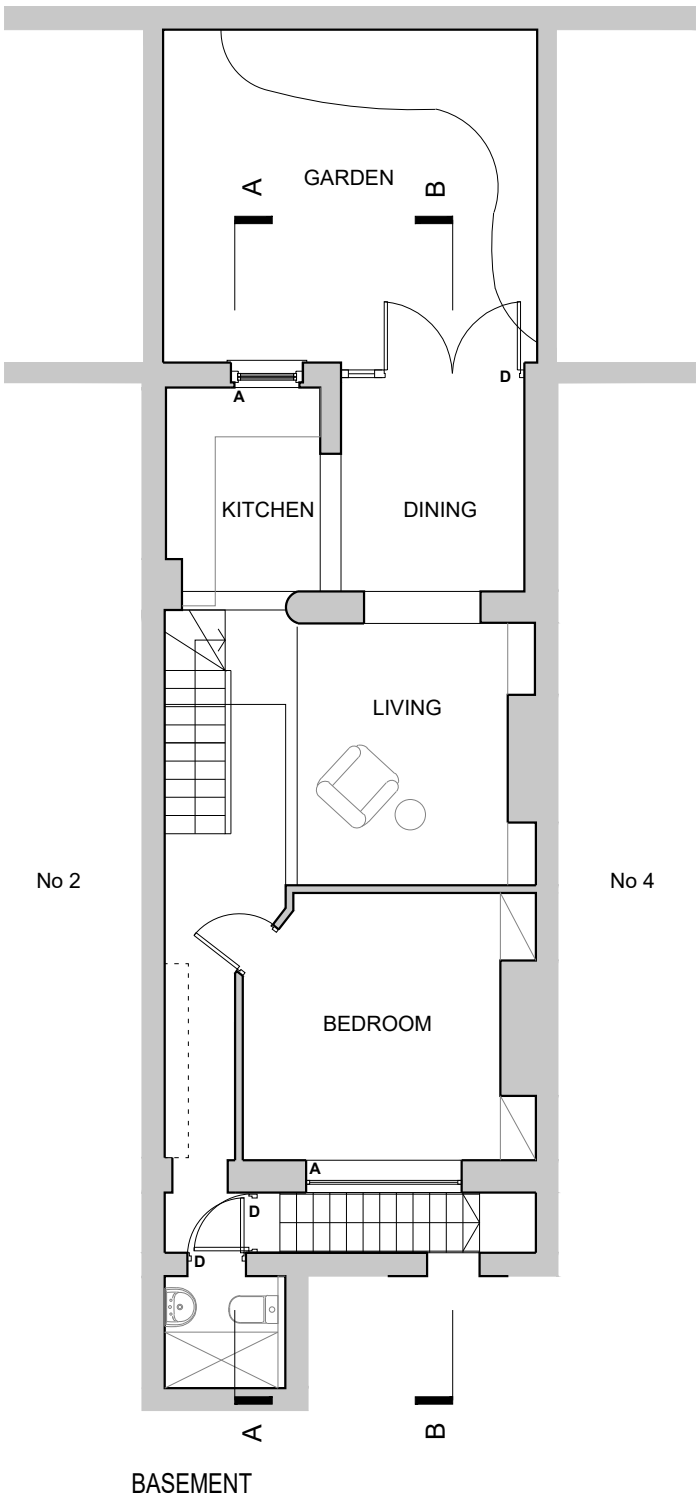


Key:

- Existing
- To be removed

EXISTING MATERIALS KEY

- A Painted timber sash windows
- B London stock brick
- C White render
- D Painted timber framed door
- E Existing valley parapet - to be retained



PROJECT	DRAWING NAME	STATUS	DATE	PLACE 54 ARCHITECTS
3 Edis Street	Existing Basement, Ground and First Floor Plans	PLANNING	01 06 21	
CLIENT	DRAWING NUMBER	REVISIONS	SCALE	54 Boston Place London NW1 6ER T: 0207 724 9395 E: info@place54architects.com www.place54architects.com
Emma Tarlo & Denis Vidal	20027 (P) 001 A	Rev A 30 06 21	1:100 @ A3	

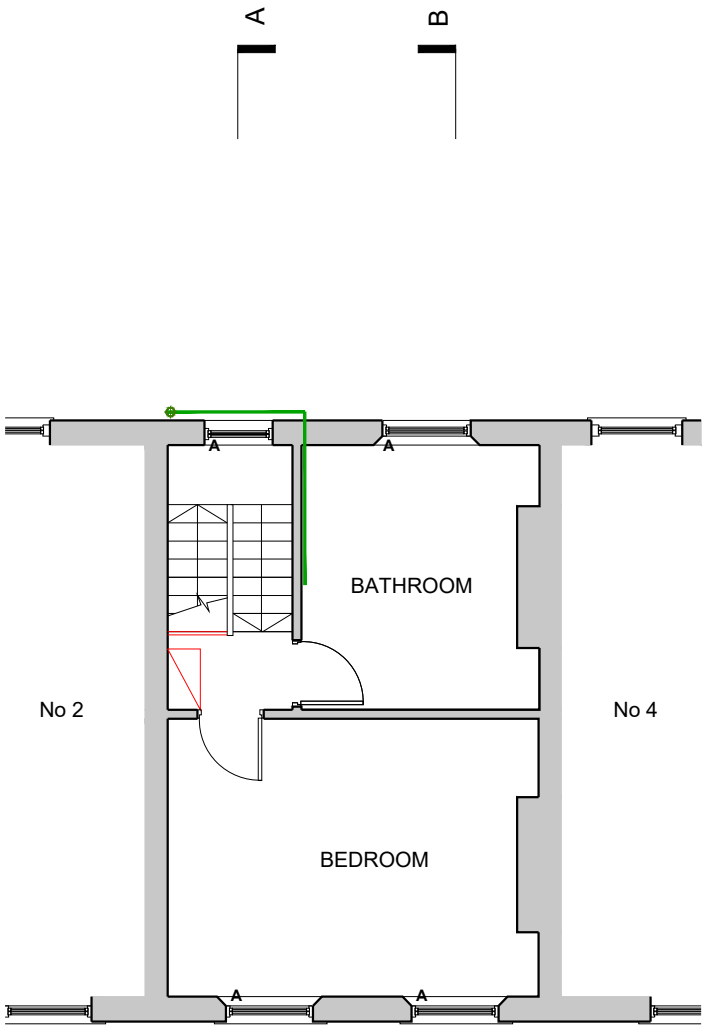
NOTE: DO NOT SCALE FROM DRAWING, ALL DIMENSIONS, LEVELS, COORDINATES, SETTING OUT, TO BE CHECKED ON SITE AND ANY DISCREPANCY REPORTED IMMEDIATELY TO THE ARCHITECT AND PROJECT MANAGER.

Key:

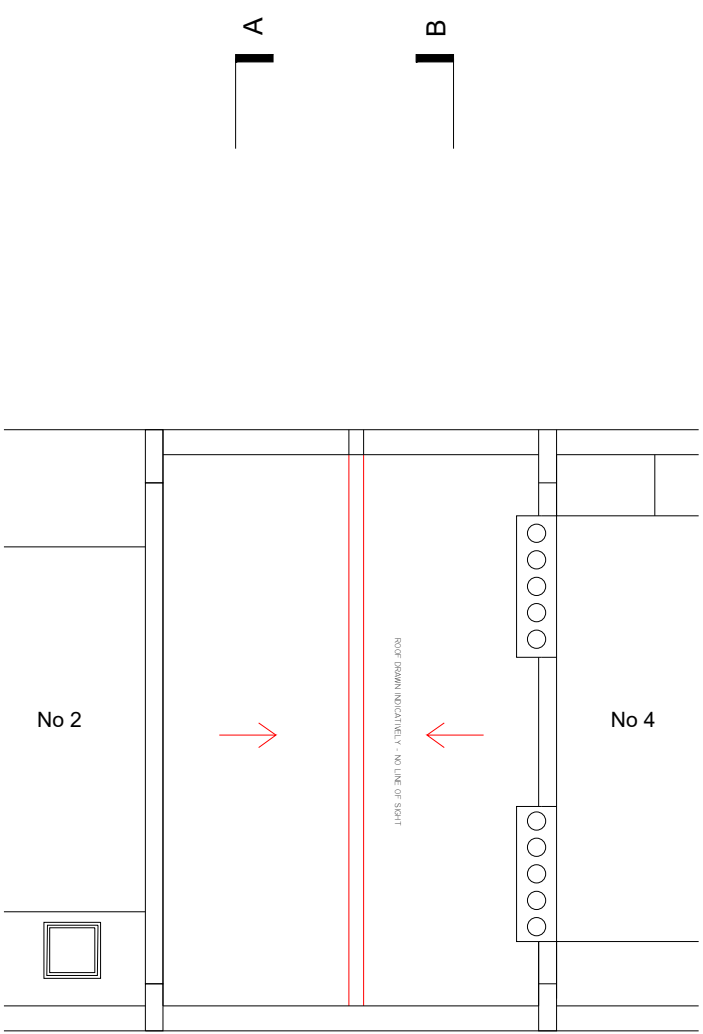
- Existing
- To be removed

EXISTING MATERIALS KEY

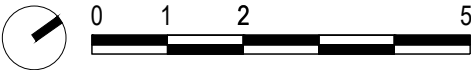
- A Painted timber sash windows
- B London stock brick
- C White render
- D Painted timber framed door
- E Existing valley parapet - to be retained



SECOND FLOOR



ROOF PLAN



PROJECT	DRAWING NAME	STATUS	DATE	PLACE 54 ARCHITECTS
3 Edis Street	Existing Second and Roof Floor Plans	PLANNING	01 06 21	
CLIENT	DRAWING NUMBER	REVISIONS	SCALE	54 Boston Place London NW1 6ER T: 0207 724 9395 E: info@place54architects.com www.place54architects.com
Emma Tarlo & Denis Vidal	20027 (P) 002 A	Rev A 30 06 21	1:100 @ A3	

NOTE: DO NOT SCALE FROM DRAWING, ALL DIMENSIONS, LEVELS, COORDINATES, SETTING OUT, TO BE CHECKED ON SITE AND ANY DISCREPANCY REPORTED IMMEDIATELY TO THE ARCHITECT AND PROJECT MANAGER.

Key:

- Existing
- To be removed

EXISTING MATERIALS KEY

- A Painted timber sash windows
- B London stock brick
- C White render
- D Painted timber framed door
- E Existing valley parapet - to be retained



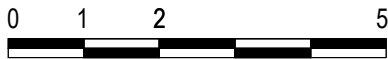
2 EDIS STREET      3 EDIS STREET APPLICATION SITE      4 EDIS STREET

FRONT ELEVATION



4 EDIS STREET      3 EDIS STREET APPLICATION SITE      2 EDIS STREET

REAR ELEVATION



PROJECT	DRAWING NAME	STATUS	DATE	PLACE 54 ARCHITECTS
3 Edis Street	Existing Front and Rear Elevations	PLANNING	01 06 21	
CLIENT	DRAWING NUMBER	REVISIONS	SCALE	54 Boston Place London NW1 6ER T: 0207 724 9395 E: info@place54architects.com www.place54architects.com
Emma Tarlo & Denis Vidal	20027 (P) 003 A	Rev A 30 06 21	1:100 @ A3	

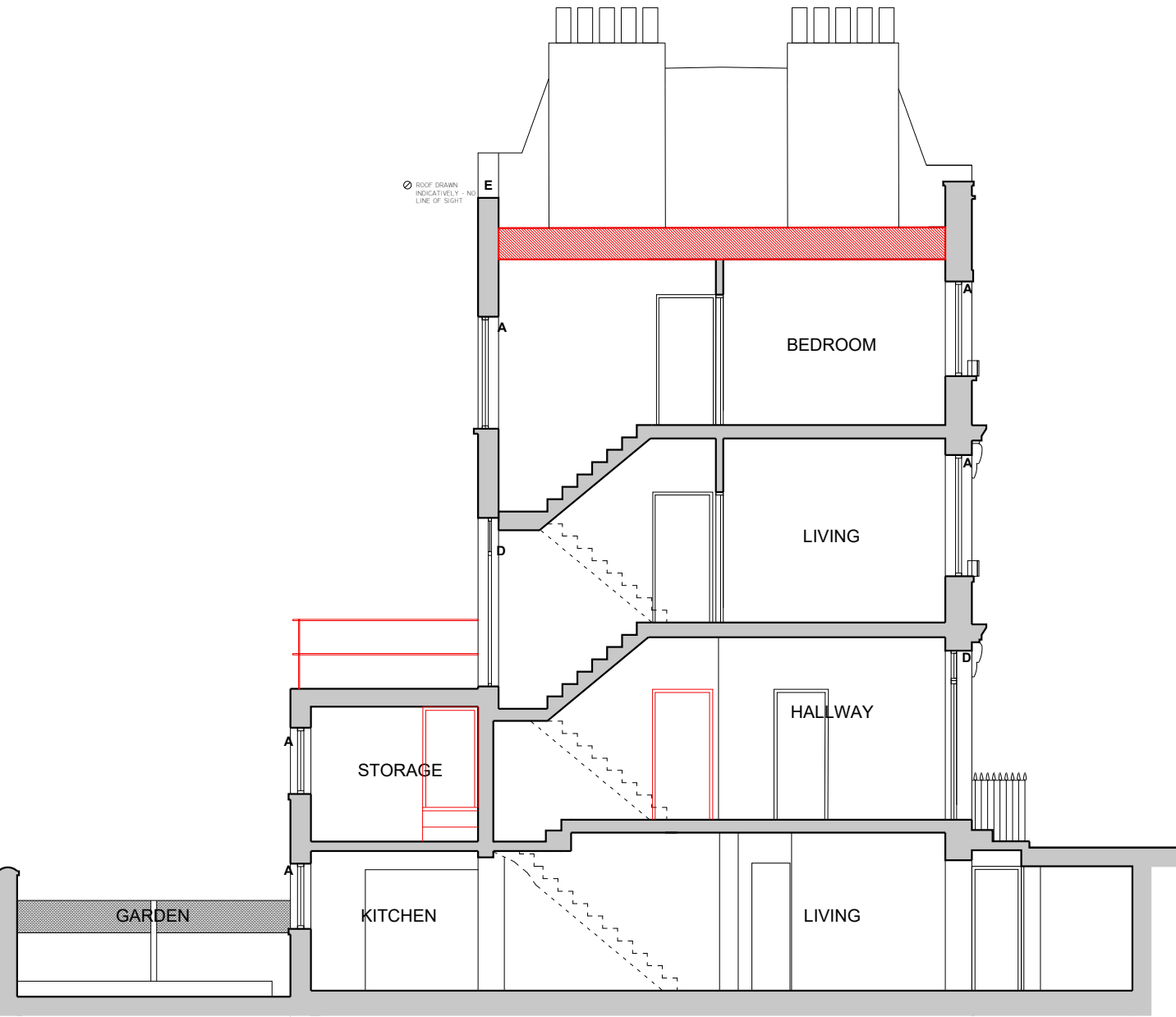
NOTE: DO NOT SCALE FROM DRAWING, ALL DIMENSIONS, LEVELS, COORDINATES, SETTING OUT, TO BE CHECKED ON SITE AND ANY DISCREPANCY REPORTED IMMEDIATELY TO THE ARCHITECT AND PROJECT MANAGER.

Key:

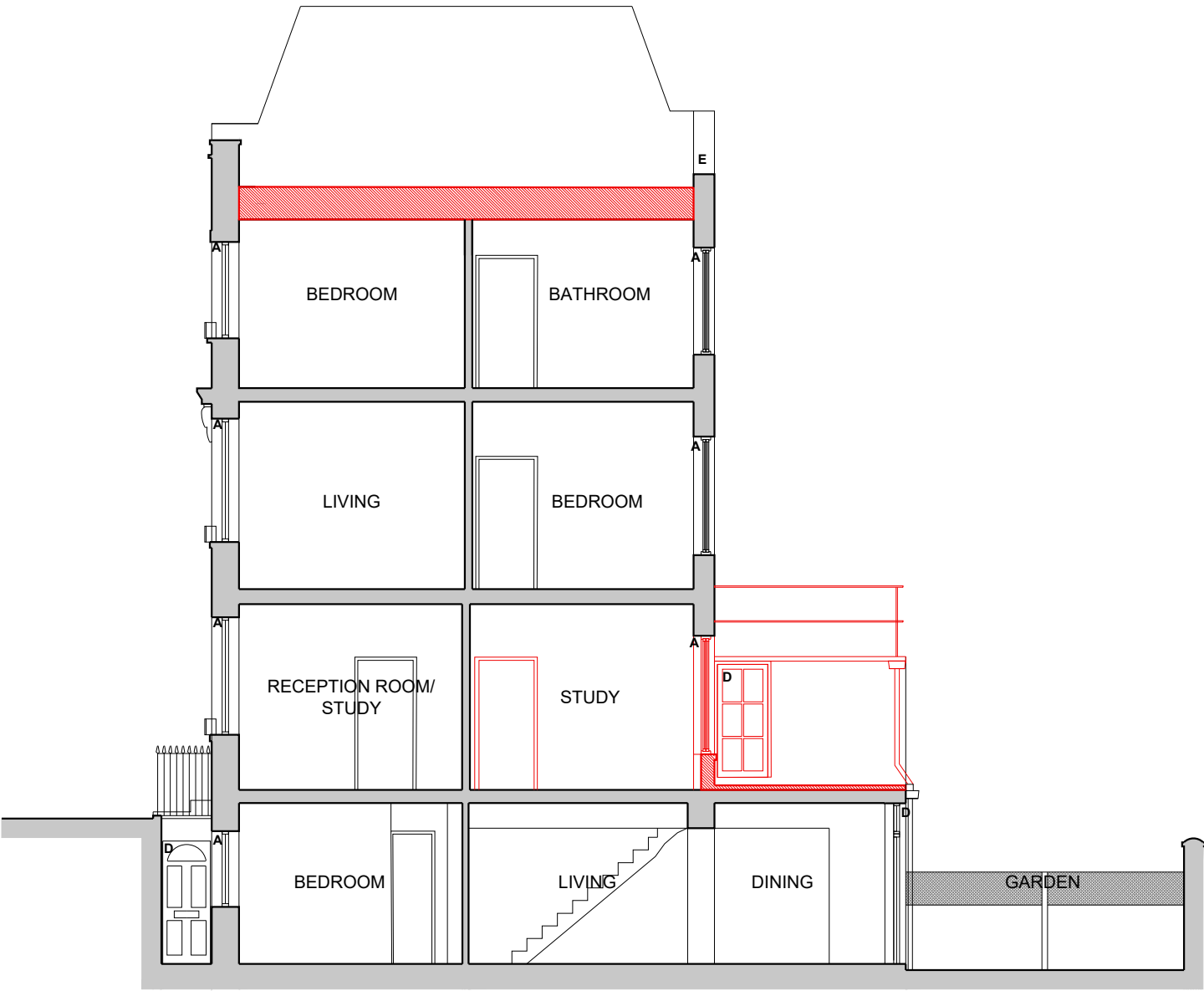
- Existing
- To be removed

EXISTING MATERIALS KEY

- A Painted timber sash windows
- B London stock brick
- C White render
- D Painted timber framed door
- E Existing valley parapet - to be retained



SECTION A-A



SECTION B-B

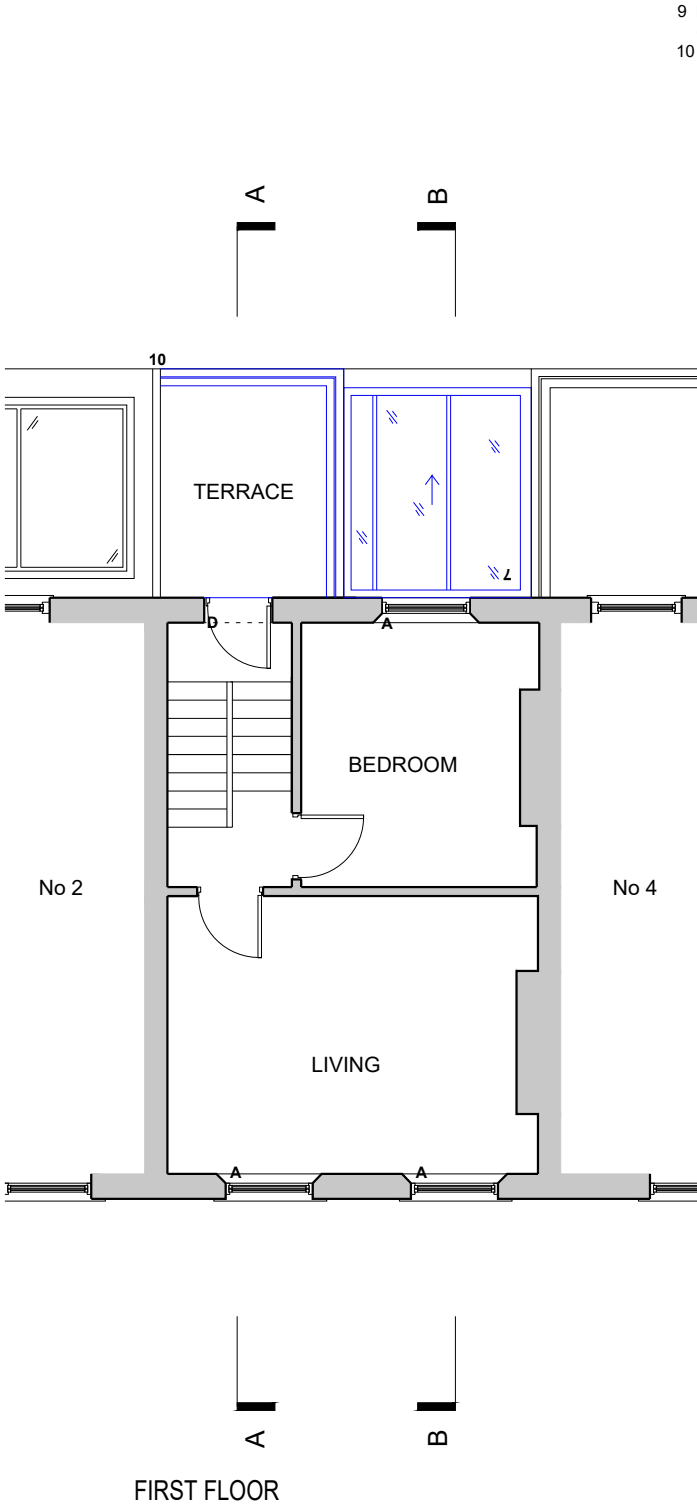
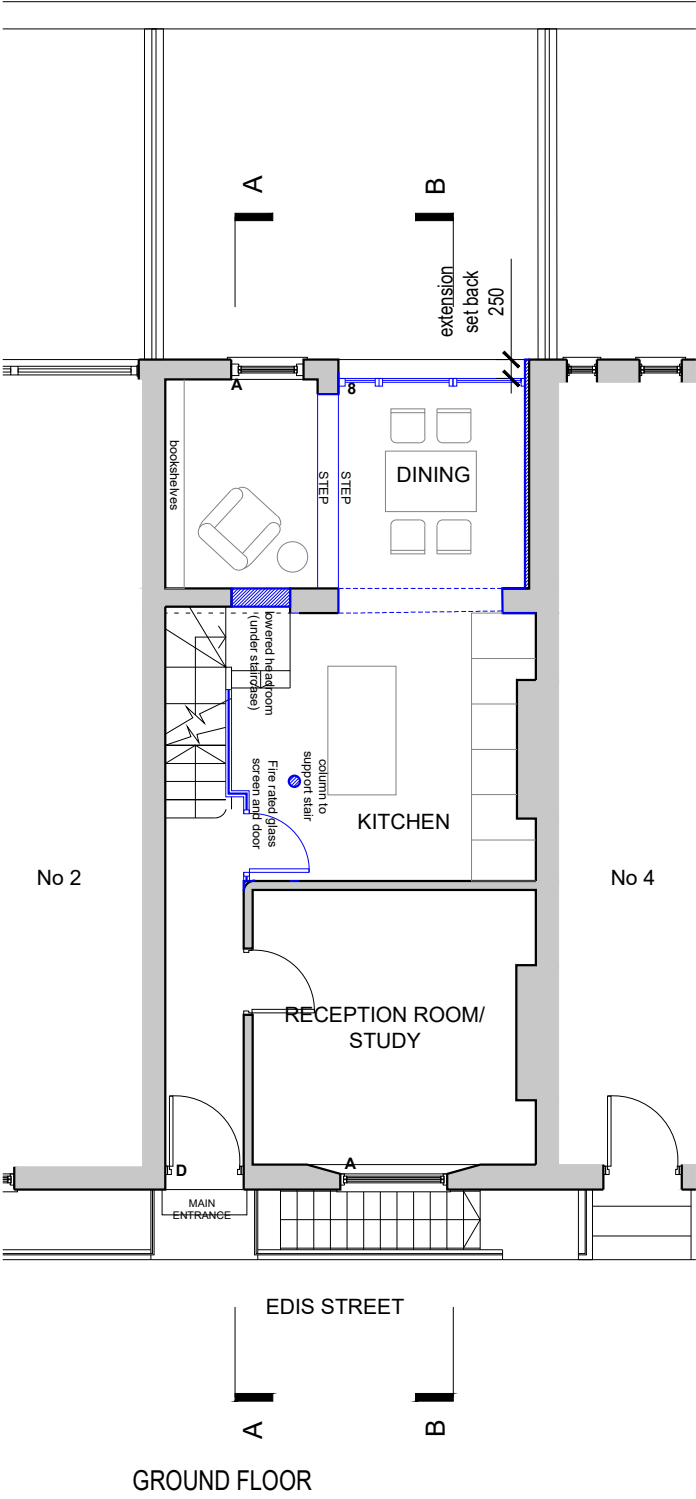
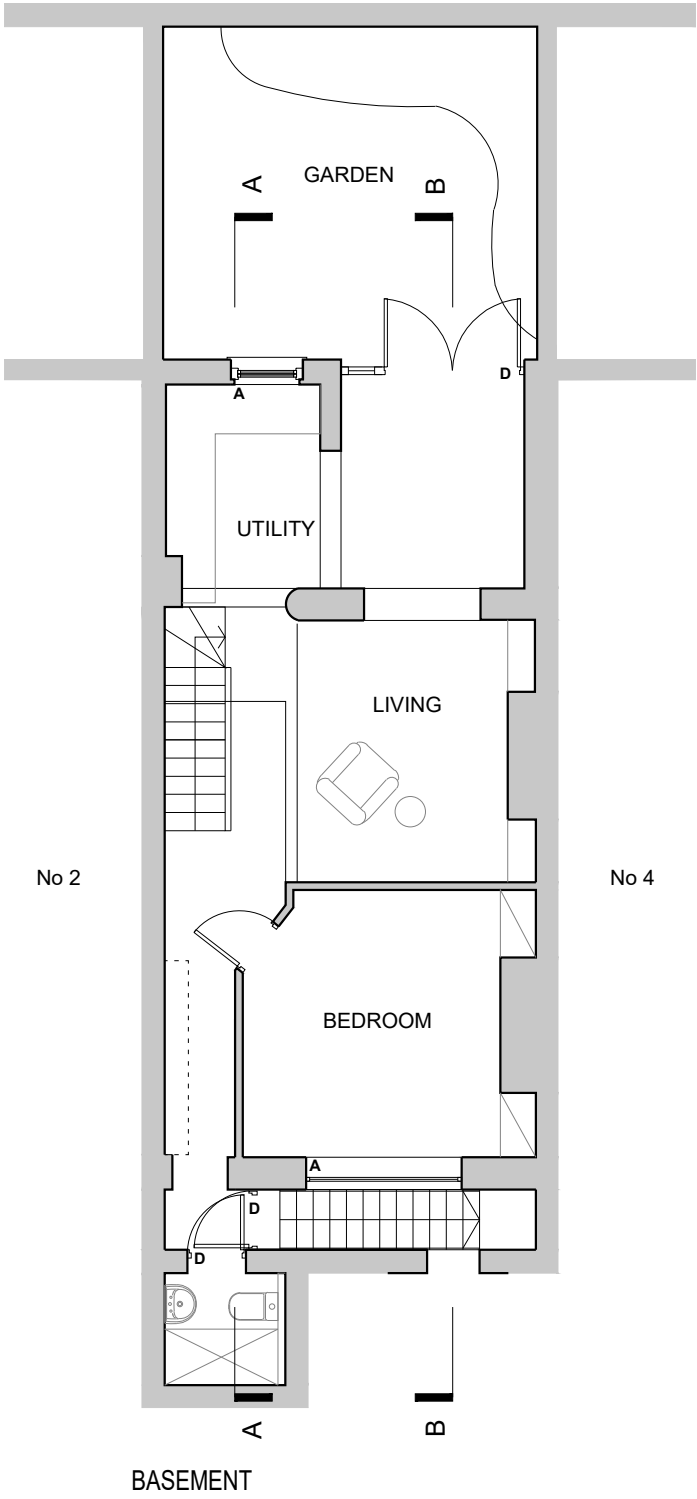


PROJECT	DRAWING NAME	STATUS	DATE	PLACE 54 ARCHITECTS
3 Edis Street	Existing Sections A-A and B-B	PLANNING	01 06 21	
CLIENT	DRAWING NUMBER	REVISIONS	SCALE	54 Boston Place London NW1 6ER T: 0207 724 9395 E: info@place54architects.com www.place54architects.com
Emma Tarlo & Denis Vidal	20027 (P) 004 A	Rev A 30 06 21	1:100 @ A3	

NOTE: DO NOT SCALE FROM DRAWING, ALL DIMENSIONS, LEVELS, COORDINATES, SETTING OUT, TO BE CHECKED ON SITE AND ANY DISCREPANCY REPORTED IMMEDIATELY TO THE ARCHITECT AND PROJECT MANAGER.

Key:

- Existing
- Proposed

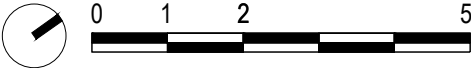


EXISTING MATERIALS KEY

- A Painted timber sash windows  
B London stock brick  
C White render  
D Painted timber framed door  
E Existing valley parapet - to be retained

PROPOSED MATERIALS KEY

- 1 Painted timber sash windows  
2 Natural slate mansard roof  
3 Lead clad dormers  
4 Lead flashing  
5 Single ply membrane/GRP- dark grey  
6 Painted timber framed bifolding doors - double glazed  
7 Conservation style rooflights/Glazed roof  
8 Double glazed timber framed panels with upper sections opening  
9 Extend brick parapet wall- brick to match existing - London Stock  
10 Metal railings - painted black



PROJECT	DRAWING NAME	STATUS	DATE	PLACE 54 ARCHITECTS
3 Edis Street	Proposed Basement, Ground and First Floor Plans	PLANNING	01 06 21	
CLIENT	DRAWING NUMBER	REVISIONS	SCALE	54 Boston Place London NW1 6ER T: 0207 724 9395 E: info@place54architects.com www.place54architects.com
Emma Tarlo & Denis Vidal	20027 (P) 101 A	Rev A 30 06 21	1:100 @ A3	

NOTE: DO NOT SCALE FROM DRAWING, ALL DIMENSIONS, LEVELS, COORDINATES, SETTING OUT, TO BE CHECKED ON SITE AND ANY DISCREPANCY REPORTED IMMEDIATELY TO THE ARCHITECT AND PROJECT MANAGER.

Key:

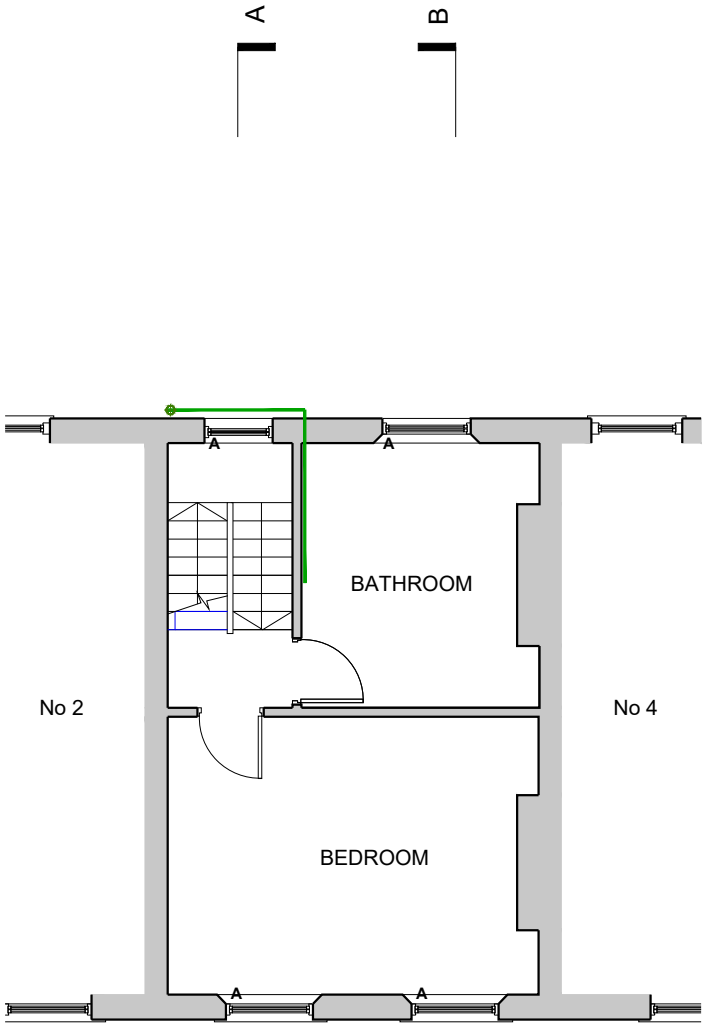
- Existing
- Proposed

EXISTING MATERIALS KEY

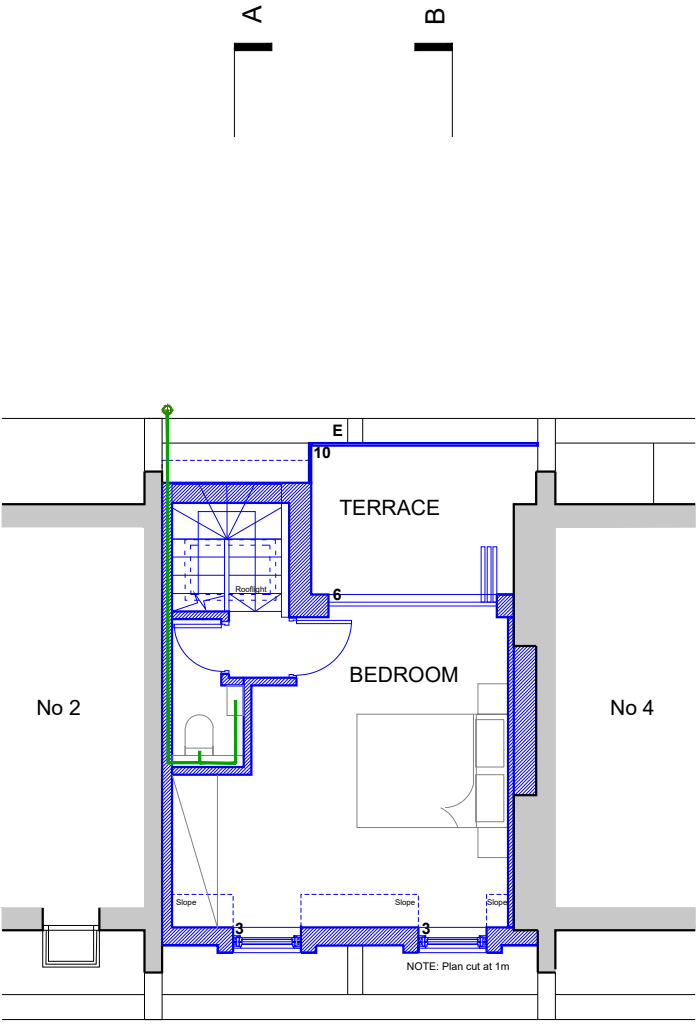
- A Painted timber sash windows
- B London stock brick
- C White render
- D Painted timber framed door
- E Existing valley parapet - to be retained

PROPOSED MATERIALS KEY

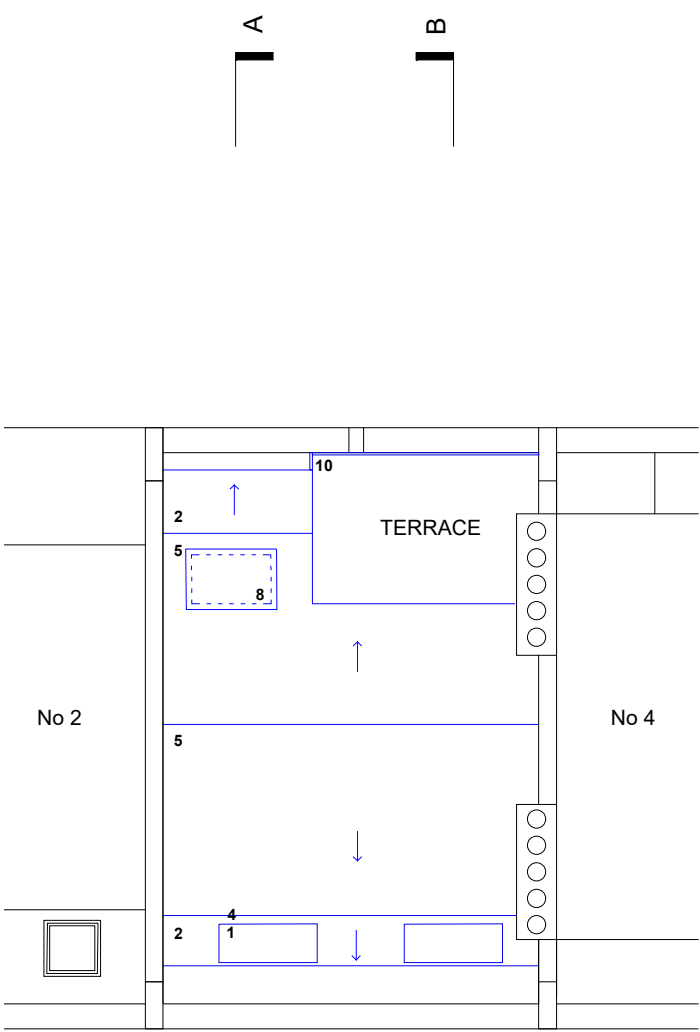
- 1 Painted timber sash windows
- 2 Natural slate mansard roof
- 3 Lead clad dormers
- 4 Lead flashing
- 5 Single ply membrane/GRP- dark grey
- 6 Painted timber framed bifolding doors - double glazed
- 7 Conservation style rooflights/Glazed roof
- 8 Double glazed timber framed panels with upper sections opening
- 9 Extend brick parapet wall- brick to match existing - London Stock
- 10 Metal railings - painted black



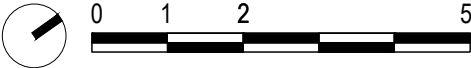
SECOND FLOOR



THIRD FLOOR



ROOF PLAN



PROJECT	DRAWING NAME	STATUS	DATE	PLACE 54 ARCHITECTS
3 Edis Street	Proposed Second, third and Roof Floor Plans	PLANNING	01 06 21	
CLIENT	DRAWING NUMBER	REVISIONS	SCALE	54 Boston Place London NW1 6ER T: 0207 724 9395 E: info@place54architects.com www.place54architects.com
Emma Tarlo & Denis Vidal	20027 (P) 102 A	Rev A 30 06 21	1:100 @ A3	

NOTE: DO NOT SCALE FROM DRAWING, ALL DIMENSIONS, LEVELS, COORDINATES, SETTING OUT, TO BE CHECKED ON SITE AND ANY DISCREPANCY REPORTED IMMEDIATELY TO THE ARCHITECT AND PROJECT MANAGER.

Key:

- Existing
- Proposed



2 EDIS STREET      3 EDIS STREET APPLICATION SITE      4 EDIS STREET

FRONT ELEVATION



4 EDIS STREET      3 EDIS STREET APPLICATION SITE      2 EDIS STREET

REAR ELEVATION

EXISTING MATERIALS KEY

- A Painted timber sash windows
- B London stock brick
- C White render
- D Painted timber framed door
- E Existing valley parapet - to be retained

PROPOSED MATERIALS KEY

- 1 Painted timber sash windows
- 2 Natural slate mansard roof
- 3 Lead clad dormers
- 4 Lead flashing
- 5 Single ply membrane/GRP- dark grey
- 6 Painted timber framed bifolding doors - double glazed
- 7 Conservation style rooflights/Glazed roof
- 8 Double glazed timber framed panels with upper sections opening
- 9 Extend brick parapet wall- brick to match existing - London Stock
- 10 Metal railings - painted black



PROJECT	DRAWING NAME	STATUS	DATE	PLACE 54 ARCHITECTS	
3 Edis Street	Proposed Front and Rear Elevations	PLANNING	01 06 21		
CLIENT	DRAWING NUMBER	REVISIONS	SCALE	54 Boston Place London NW1 6ER T: 0207 724 9395 E: info@place54architects.com www.place54architects.com	
Emma Tarlo & Denis Vidal	20027 (P) 103 A	Rev A 30 06 21	1:100 @ A3		

NOTE: DO NOT SCALE FROM DRAWING, ALL DIMENSIONS, LEVELS, COORDINATES, SETTING OUT, TO BE CHECKED ON SITE AND ANY DISCREPANCY REPORTED IMMEDIATELY TO THE ARCHITECT AND PROJECT MANAGER.

Key:

- Existing
- Proposed



SECTION A-A

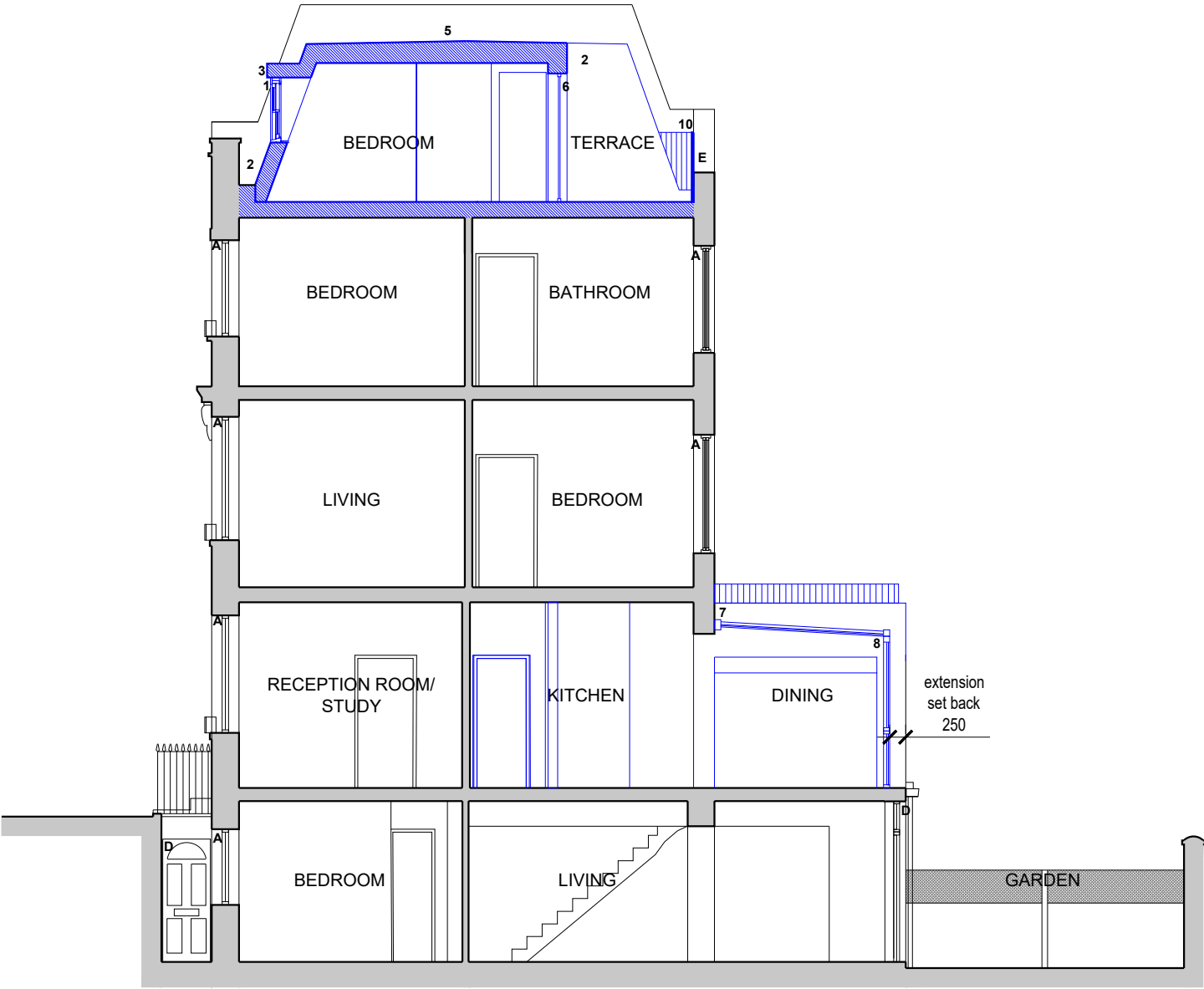


EXISTING MATERIALS KEY

- A Painted timber sash windows
- B London stock brick
- C White render
- D Painted timber framed door
- E Existing valley parapet - to be retained

PROPOSED MATERIALS KEY

- 1 Painted timber sash windows
- 2 Natural slate mansard roof
- 3 Lead clad dormers
- 4 Lead flashing
- 5 Single ply membrane/GRP- dark grey
- 6 Painted timber framed bifolding doors - double glazed
- 7 Conservation style rooflights/Glazed roof
- 8 Double glazed timber framed panels with upper sections opening
- 9 Extend brick parapet wall- brick to match existing - London Stock
- 10 Metal railings - painted black



SECTION B-B

PROJECT	DRAWING NAME	STATUS	DATE	PLACE 54 ARCHITECTS	
3 Edis Street	Proposed Sections A-A and B-B	PLANNING	01 06 21		
CLIENT	DRAWING NUMBER	REVISIONS	SCALE	54 Boston Place London NW1 6ER T: 0207 724 9395 E: <a href="mailto:info@place54architects.com">info@place54architects.com</a> <a href="http://www.place54architects.com">www.place54architects.com</a>	
Emma Tarlo & Denis Vidal	20027 (P) 104 A	Rev A 30 06 21	1:100 @ A3		

NOTE: DO NOT SCALE FROM DRAWING, ALL DIMENSIONS, LEVELS, COORDINATES, SETTING OUT, TO BE CHECKED ON SITE AND ANY DISCREPANCY REPORTED IMMEDIATELY TO THE ARCHITECT AND PROJECT MANAGER.