

C10	STAGE 05	20210927
C09	STAGE 05	20210504
C08	STAGE 05	20200919
C07	STAGE 05	20200708
C06	STAGE 05	20200603
C05	STAGE 05	20200521
C04	STAGE 05	20200504
C03	STAGE 05	20200409
C02	STAGE 05	20190322
C01	STAGE 05	20180308
C00	STAGE 04	20180907
P1.5	STAGE 04	20180727
P1.4	STAGE 03	20170922
P1.3	STAGE 03	20170908
P1.2	STAGE 03	20170825
P1.1	STAGE 03	20160916

DATE	07/27/18
JOB NUMBER	325424
SCALE	1 : 100
DRAWN	Author
CHECKED	Checker
APPROVED	Approver
CDE STATUS	CDE STATUS

SYMBOL	DESCRIPTION
XXXXX 2800 AFF	CEILING TYPE
1.5	CEILING HEIGHT TO UNDERSIDE
1.5	DETAIL REFERENCE AND DRAWING NUMBER
SOP	SETTING OUT POINT
---	INDICATES PLASTERBOARD PARTITION CONTINUING ABOVE FINISHED CEILING LEVEL TO SOFFIT THAT ARE NON-FIRERATED
---	INDICATES PLASTERBOARD PARTITION CONTINUING ABOVE GLAZED PARTITIONS & FINISHED CEILING LEVEL TO SOFFIT THAT ARE NON-FIRERATED
SB	INDICATES FIRE & SMOKE BARRIERS ABOVE FINISHED CEILING

CEILING SETTINGS
REFER TO SETTING OUT OF CEILING GRIDS ON DRAWINGS

SUSPENDED CEILING TYPES (REFER TO DRAWINGS):

CLG-101 - PLASTERBOARD CEILING ON MIF SUPPORT FRAME. RAL 9010
CLG-105 - MOISTURE RESISTANT PLASTERBOARD CEILING ON MIF SUPPORT FRAME. RAL 9010
CLG-502 - ACOUSTIC METAL SUSPENDED CEILING TILES ON MIF SUPPORT FRAME. SIZE 1200X300 RAL 9010
CLG - 805 - BESPOKE ACOUSTIC BAFFLE CEILING SYSTEM. BLACK
EXPOSED CONCRETE SLAB (DUST SEALER TO CONCRETE SOFFIT)
CLG-801 - BARRISOL - RAL 9010 FINISH WITH RECESSED LIGHTING TRACK WITH FIXED AND DIRECTIONAL LIGHTING ON ERCO TRACK. RAL 9010
ESS-101 NATURAL ANODISED ALUMINIUM SOFFIT PANEL WITH COLOUR 100A
CLG-503 ACCESSIBLE CEILING PANELS ECOPHON ACCESS C. WHITE (RAL 9010)
INS-201 - ROCWOOL SOFFIT SLAB INSULATION WITH BOARDED FINISH. RAL 9010
OUT OF SCOPE - CEILING AS PART OF THE FIT OUT

CEILING EQUIPMENT (REFER TO DRAWINGS):

NOTE: MEP FIXTURES AND SERVICES TO BE FURTHER COORDINATED WITH ELEMENTA AND MEP CONSULTANT. PLEASE REFER TO MEP DRAWINGS FOR FURTHER DETAILS.

SPOTLIGHT (Refer to SRW drawings for Spec)
LINEAR EXTERIOR LED LIGHTING
LINEAR INTERIOR LED LIGHTING
LINEAR CEILING MOUNTED LED LIGHTING
FIRE ALARM SMOKE DETECTOR
SPRINKLER
PERSON DETECTOR
BEACON AND/OR COMBINED WITH SD (Refer to SRW drawings for details)
HEAT DETECTOR
EMERGENCY LIGHTING
P/A/V/A
PUBLIC ADDRESS/VOICE ALARM
WC ALARM INDICATOR
EXTRACT DISC
OPTICAL SMOKE DETECTOR
LINEAR SLOT DIFFUSER
CCTV CEILING MOUNTED CAMERAS

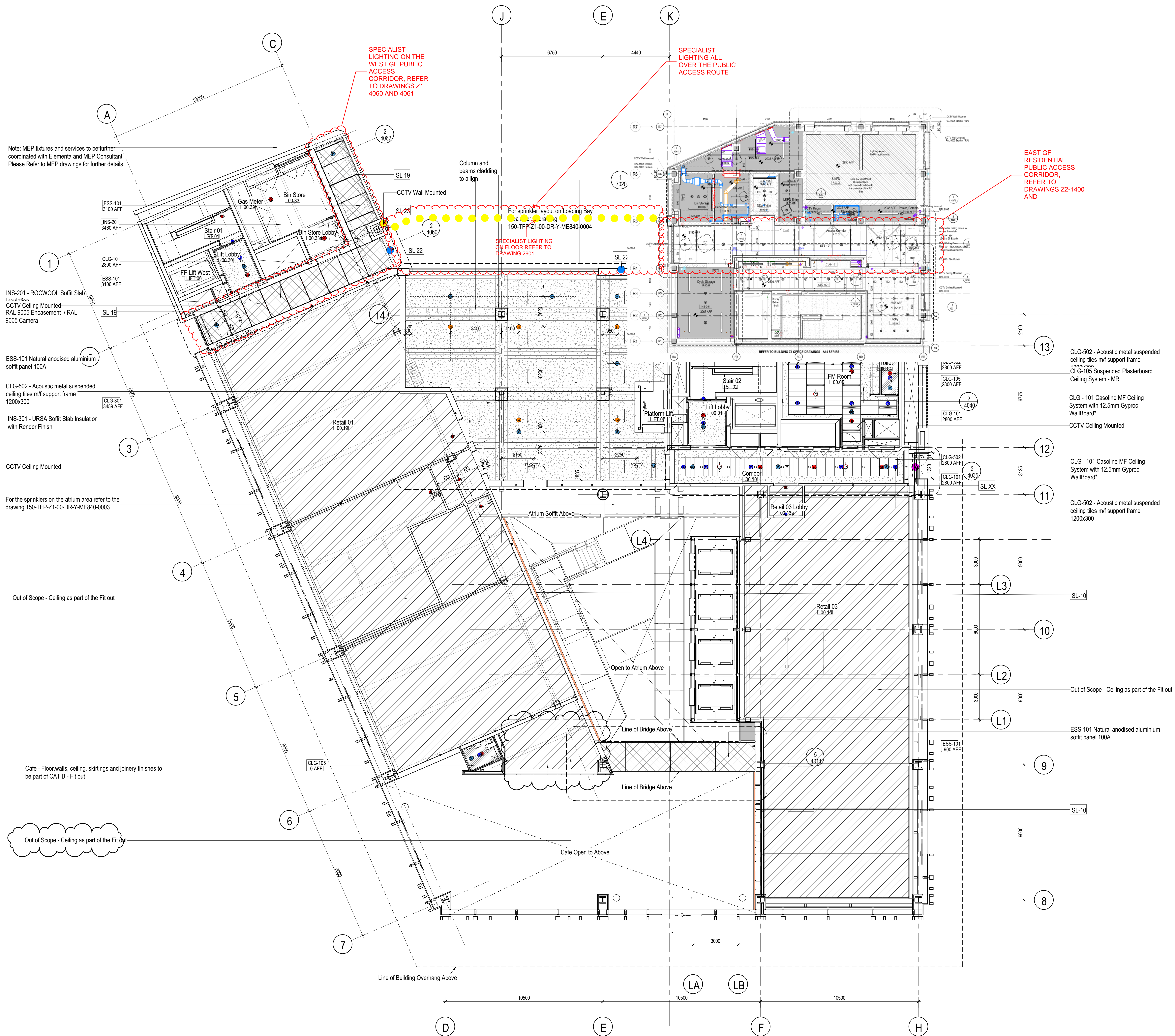
SPECIALIST LIGHTING (REFER TO DRAWINGS):
NOTE: FOR FITTING SPEC DETAILS PLEASE REFER TO MEP SUBCONTRACTOR TECHNICAL SUBMITTALS.

COMMERCIAL DEVELOPMENT
SL1 1/1A/1B - EXTERIOR RATED LINEAR OPAL (Perimeter exterior canopy)
SL10 - RECESSED INGROUND LINEAR ULIGHT (GF Atrium wall perimeter and reception)
SL19 - CEILING MID LUMINAIRE (Undercroft Access Corridor West Core)
SL22 - WALL MOUNTED EXTERIOR LUMINAIRE - SILVER (Entry on Access Corridor West Core)
SL23 - WALL MOUNTED EXTERIOR LUMINAIRE - SILVER (Fixed on high level GRC panels)
UNDERCROFT DOWNLIGHTER - WHITE (Entry on Access Corridor East Core)

RESIDENTIAL DEVELOPMENT
SL22 A - WALL MOUNTED EXTERIOR LUMINAIRE - BLACK ANODISED
SL23 A - WALL MOUNTED EXTERIOR LUMINAIRE - SILVER (Fixed on high level GRC panels)

OTHER CONSIDERATIONS

- FOR LEGEND + QUANTITY AND SPECIFICATION OF ALL LIGHT FITTINGS, DETECTORS, SOUNDERS, SPRINKLERS, PIRs, CAMERAS AND OTHER CEILING EQUIPMENT REFER TO MAKE CONSULTANTS REPORT
- ARCHITECTURAL DRAWINGS ARE FOR SETTING OUT PURPOSES ONLY
- ALL TIMBER PATRESSES USED ABOVE CEILINGS TO BE FSC
- ALL PATRESSES AND OTHER TIMBER USED IN CEILING VOIDS TO BE NON-COMBUSTIBLE



1 Ground Level RCP
1 : 100 Referencing View: 1/ A1
Note: Refer A42 Series for Enlarged Toilets Drawings.
Refer A43 Series for Enlarged Stair Drawings.
A44 Series for Enlarged Lift Drawings