

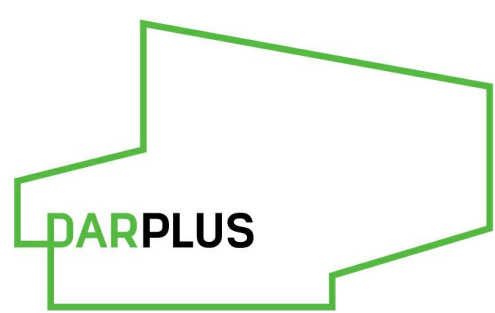
This drawing is the property of Perkins+Will UK Ltd. No disclosure or copy of it may be made without the written permission of Perkins+Will UK Ltd.

All information, areas, dimensions and datum levels are subject to detailed survey, detailed design and investigative work. Do not scale from the drawing.

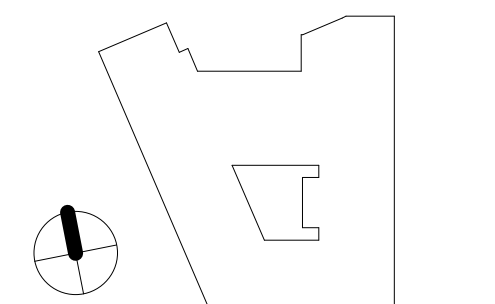
NOTE: DOCUMENTS ARE INCOMPLETE AND MAY NOT BE USED FOR REGULATORY APPROVAL, PERMITTING, OR CONSTRUCTION PURPOSES.

PROJECT

150 Holborn

DAR
WIGMORE STREET
LONDON W1

KEYPLAN



ISSUE CHART

C04	STAGE 05	2020/05/21
C03	STAGE 05	2019/05/31
C02	STAGE 05	2019/04/05
C01	STAGE 05	2019/03/22
P1.3	STAGE 04	2018/08/31
P1.2	STAGE 04	2018/06/10
P1.1	STAGE 04	2018/07/27
W001	BS05	DATE

Date 07/27/18
Job Number 325424
Scale 1 : 20
Drawn Author
Checked Checker
Approved Approver

CDE STATUS

STAGE 05 - FOR CONSTRUCTION
TITLEEnlarged Elevations- L00
West External Corridor

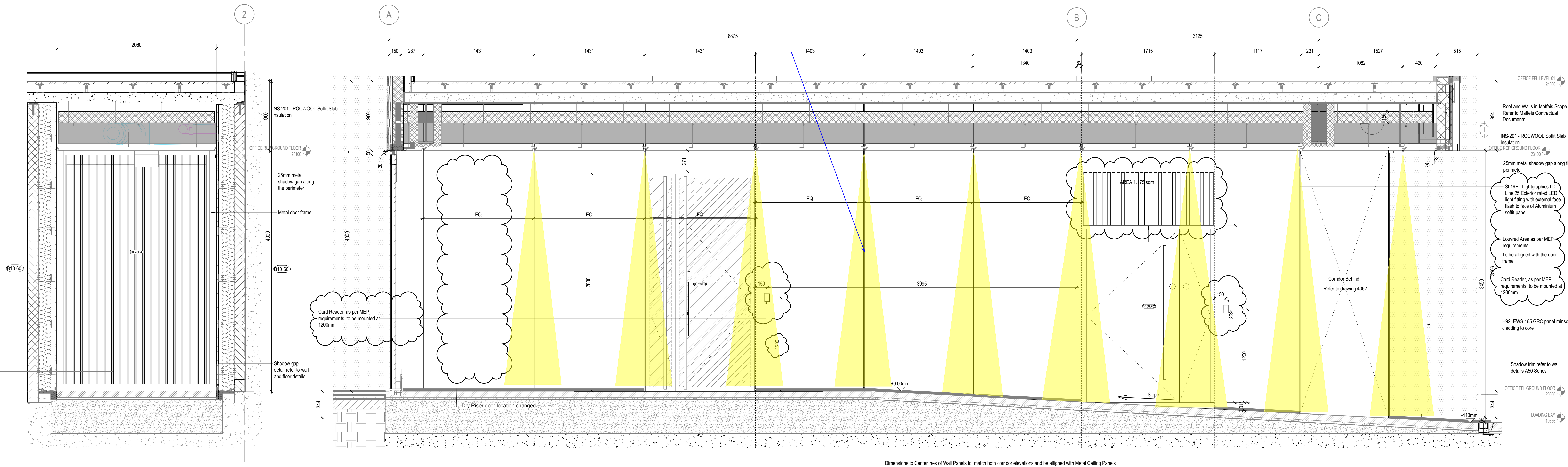
SHEET NUMBER

150 PWA Z1 00 DR A 4061

PROJECT	ACTION	VOLUME	LEVEL	TYPE	NO.	DATE
CDE STATUS CODE	A2	REVISION	C04			

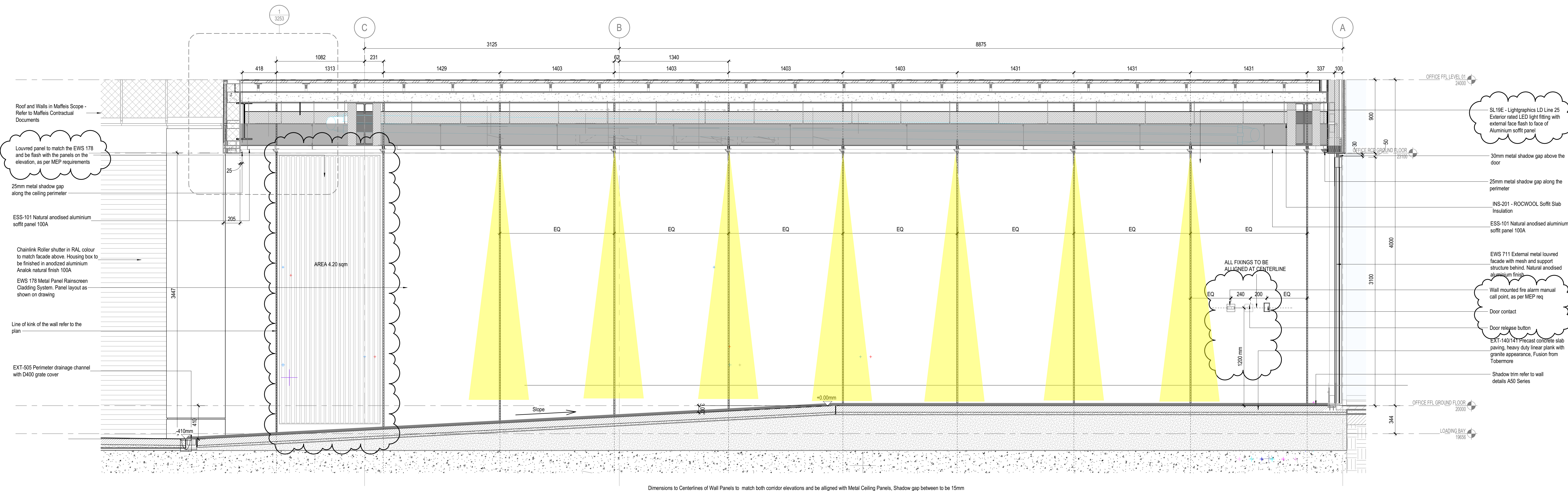
Copyright © 2018 Perkins+Will

SPECIALIST LIGHTING
DIRECTION OF LIGHT ON
WEST GF PUBLIC ACCESS
CORRIDOR, FOR LOCATION
AND SETTING OUT REFER
ALSO ON THE 4060



③ West Access Corridor L00 Metal Gate - Elevation
1:20 Referencing View: 1/ A1100

② West Access L00 - Enlarged Elevation 2
1:20 Referencing View: 1/ A1100



① West Access Corridor L00 - Enlarged Elevation 1
1:20 Referencing View: 1/ A1100