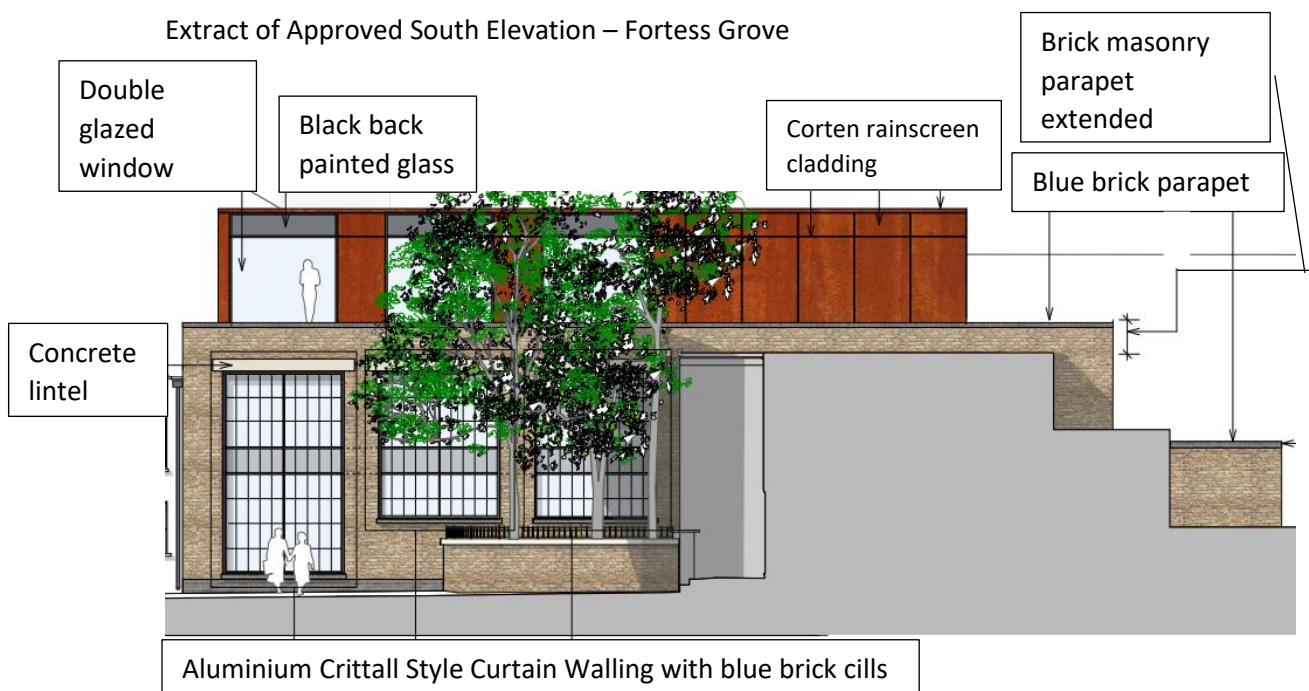


### Materials Schedule

Extract of Approved West Elevation – Fortress Grove Courtyard

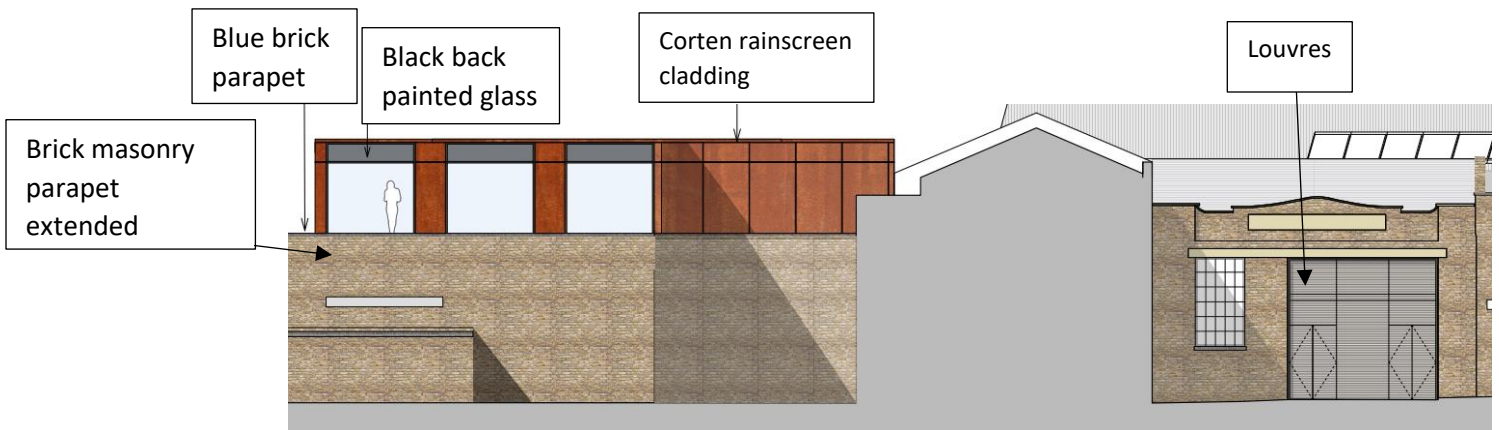


Extract of Approved South Elevation – Fortress Grove

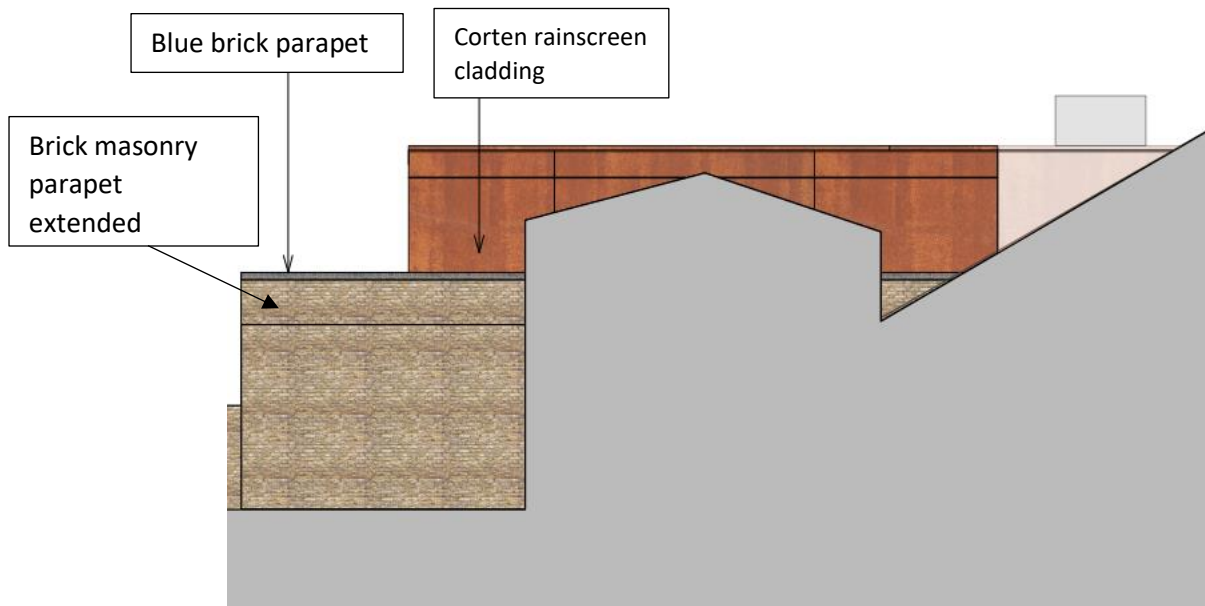


**CONDITION 4 - PLANNING PERMISSION REF: 2017/6788/P**  
**WORKSHOP REAR OF 38 – 52 FORTRESS ROAD, FORTRESS GROVE, LONDON, NW5 2HB**

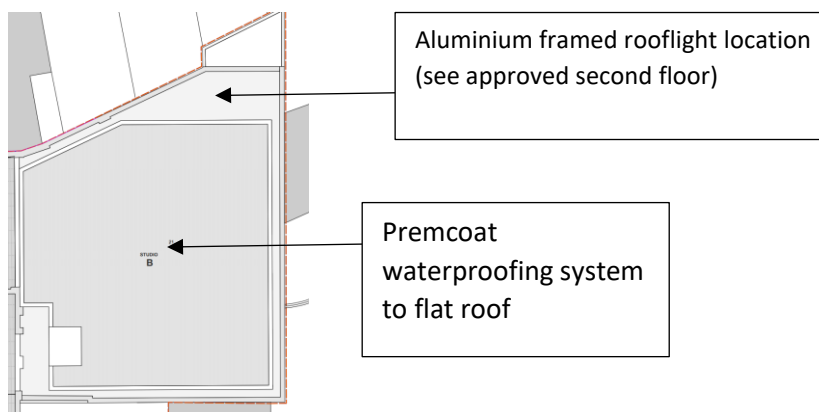
Extract of approved East Elevation (Railey Mews)



Extract of Approved North Elevation



Extract of approved roof plan



**CONDITION 4 - PLANNING PERMISSION REF: 2017/6788/P**  
**WORKSHOP REAR OF 38 – 52 FORTRESS ROAD, FORTRESS GROVE, LONDON, NW5 2HB**

- **Brick masonry parapet extended** - Funton Old Chelsea Yellow 4053 (No.23 on approved elevations)
- **Blue brick parapet and cills** - Single stretcher bond band course, in Staffordshire Slate Blue Smooth (2232) (bullnosed) (To parapet (No.24 on approved elevations) and cills to windows (Nos. 6 and 7 on approved elevations)



**Corten steel rainscreen cladding**

(Nos. 21, 22 and 29 on approved elevations)

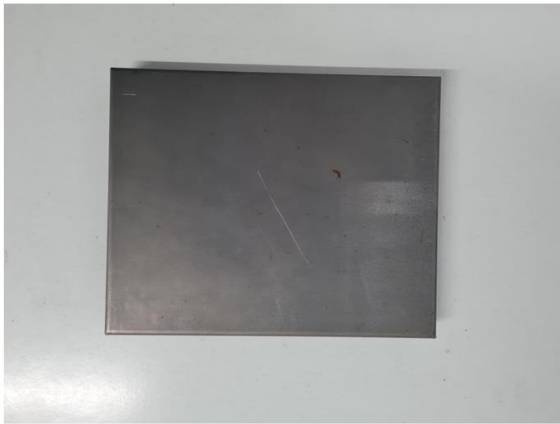
Photographs 1 and 2: Weathered Corten Steel (sample weathered for 12 months)





**CONDITION 4 - PLANNING PERMISSION REF: 2017/6788/P**  
**WORKSHOP REAR OF 38 – 52 FORTRESS ROAD, FORTRESS GROVE, LONDON, NW5 2HB**

Photographs 3 and 4: Corten Steel as installed on site (pre-weathering)



**Premcoat waterproofing system to flat roof (LHS) and Aluminium frame to rooflight (RHS) - RAL 7016**  
(see roof plan extract)



**CONDITION 4 - PLANNING PERMISSION REF: 2017/6788/P**  
**WORKSHOP REAR OF 38 – 52 FORTRESS ROAD, FORTRESS GROVE, LONDON, NW5 2HB**

**Aluminium Crittall Style Curtain Walling - (Nos. 6 and 7 on approved elevations)**



**Louvre to Railey Mews Elevation**

