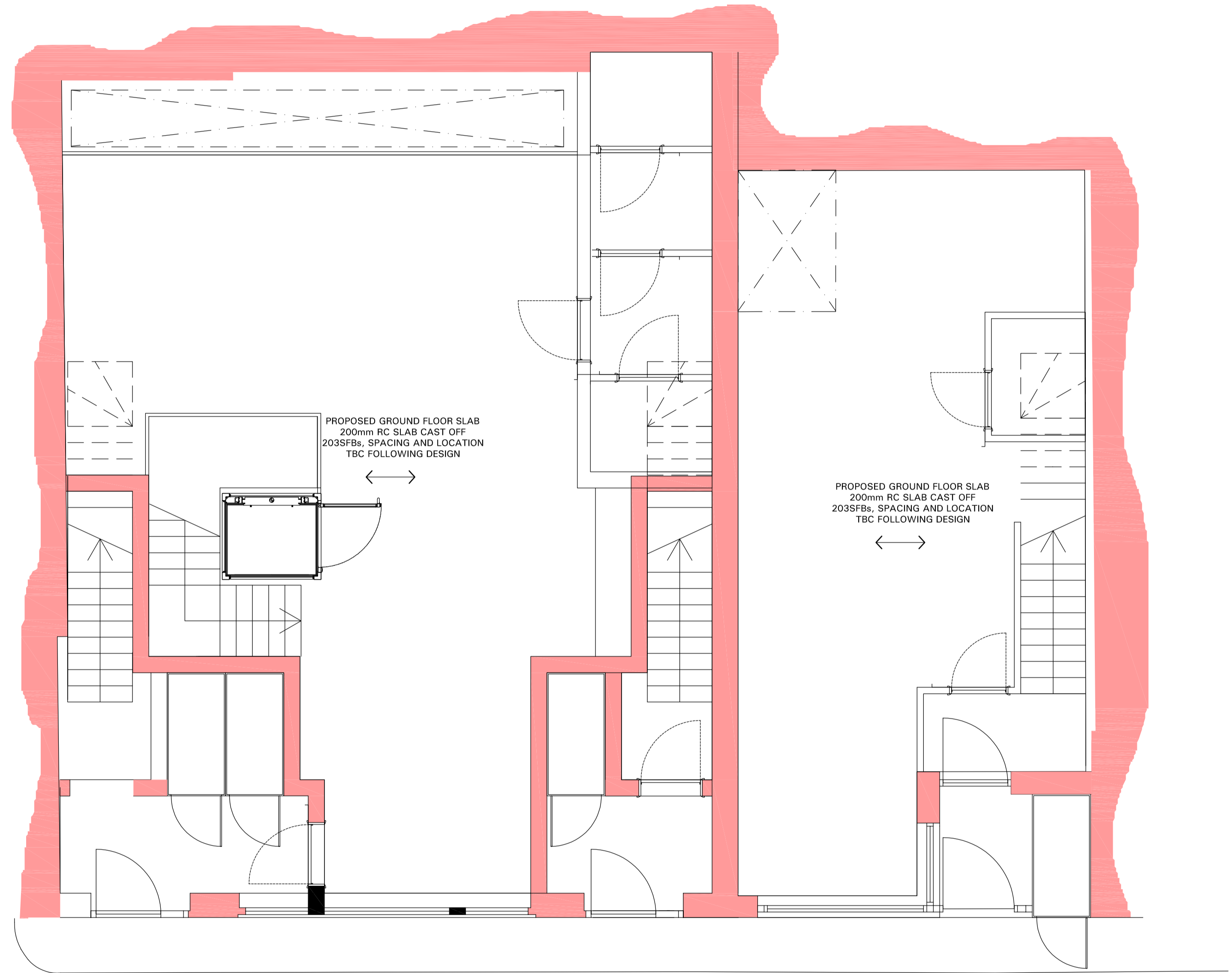


BASEMENT



GROUND FLOOR

- NOTES:**
1. THIS DRAWING TO BE READ IN CONJUNCTION WITH ALL RELEVANT ARCHITECTS AND ENGINEERS DRAWINGS AND SPECIFICATIONS.
 2. FOR SETTING OUT REFER TO ARCHITECT'S DRAWINGS.
 3. ALL DIMENSIONS ARE IN MILLIMETRES (mm) UNLESS NOTED OTHERWISE.
 4. DO NOT SCALE FROM THE DRAWING OR THE COMPUTER DIGITAL DATA. ONLY FIGURED DIMENSIONS TO BE USED.

Rev	Date	Description	By
P1	06/22/21	PLANNING	JE

Job
**11-15 KINGS TERRACE
 LONDON
 NW1 0JP**

Drawing Status
PLANNING

Title
**PROPOSED PLANS
 BASEMENT LEVEL**

Scale @ A1 | Date | By | Checked
 1:50 | JUNE 21 | JE | MB

Drawing Number | Revision
 MBP / 8292 / 100 | P1

MBP **Michael Barclay Partnership**
 consulting engineers

Chronicle House, 72 - 78 Fleet Street
 London EC4Y 1HY
 T 020 7240 1191
 E london@mbp-uk.com
 W mbp-uk.com

SPECIFICATION FOR UNDERPINNING WORKS TO BE USED IN LIEU OF NBS D50

- 110 The scope of the work is detailed on MBP Drawing set 8292 and all drawings referred to.
- 115 All materials and workmanship are to be in strict accordance with the Structural Engineer's Specification.
- 120 Works to be sequenced and completed as described in the Method Statement provided.
- 125 Prior to commencing any excavation works the Contractor is advised to carry out a survey to locate the position of all buried services.
- 130 Openings at basement level may need to be suitably propped to restrict any cracking during the underpinning works.
- 135 Excavate accurately with vertical faces and to depths shown on drawings. The underpin blocks are to be excavated in lengths not exceeding the pin sizes indicated and leaving not less than either:
 - i) 2.0 metres of undisturbed footing on either side of the open excavation or
 - ii) At least one completed section of dry-packed underpinning on either side of the open excavation.
 - iii) At no time should more than 30% of all other walls be left unsupported.
- 140 Test existing brick-lime footings for soundness by tapping with a hammer over the whole width. Break out and remove any loose or unsound material to a uniform level soffit.
- 145 Do not excavate beyond the inner face of the adjacent wall at the rear. Do not excavate more working space than necessary at the front.
- 150 Keep the excavations clean and dry. Remove all soil and loose concrete, etc from adjacent completed pins to form a good key.
- 155 Obtain approval of the Engineer or Building Control Inspector before concreting each section.
- 170 Raise RC Underpins as Detailed and Scheduled
- 172 Provide Ø12 dowels between adjacent pins at 600mm Vertical c/c
- 175 Except where indicated on the drawings, not less than 24 hours after completion of each pin, pack gap between underpinning concrete and soffit of footing / existing / stage 1 underpinning. Dry-pack to be 1:3 (cement : coarse sand) mortar gauged with only just sufficient water to moisten thoroughly.
- 180 Use a wooden ram to hammer mortar hard. In strips not exceeding 75mm deep into gap working symmetrically from the rear toward the face so as to completely fill all space between underpinning concrete and existing footing / underpinning with mortar.
- 185 Leave dry-pack not less than 72 hours before starting adjacent excavation.

OPERATIONS FOR TOP-DOWN CONSTRUCTION

Excavation and construction will be completed to the sequence determined by the engineer. The walls will be cast in hit-and-miss sequence and in one or two vertical stages, from top to base, as detailed on Drawing Set MBP-8292; if top-down sequence is adopted the first, top stage to be completed around the plot before the lower stage is started.

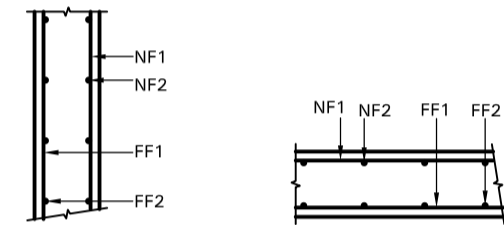
- Stage 1:**
 Excavate to 1/2-Depth below existing ground level over 1m-width
 Place Reinforcement for top section with bars extending beyond lower edge for next stage
 Place shuttering for exposed face, propped off the opposite face of the excavation
 Cast top section of reinforced concrete retaining wall
 Maintain prop to shuttering
 Repeat for next section in sequence at same level
- Stage 2:**
 Install sheeting to excavated face & install one central, adjustable prop between sheet and retaining wall
 Excavate to basement slab level
 Expose underside of top section, scabble surface and clean.
 Install hydrophilic waterstop & prepare exposed reinforcement
 Place reinforcement for lower section and lap with bars from upper section
 Position shutter with suitable birdsmouth to allow lower pin to be cast within 30mm of higher pin
 Place shuttering for exposed face, propped off the opposite face of the excavation
 Cast lower section of reinforced concrete retaining wall
 Maintain prop to shuttering
 When concrete is set remove formwork and install shutter across 30mm gap to prevent loss of grout when pouring in WEBER SBD 5 STAR GROUT through 30mm pipe
 For grout through pipe 1 until it spills from pipe 2 - rod through pipe 1 if grout does not exude pipe 1.
 Proceed to next section on sequence at same level
- Stage 3:**
 Install sheeting to excavated face & install one central, adjustable prop between sheet and retaining wall to full depth
 Excavate to basement formation level
 Expose underside of lower section & prepare exposed reinforcement
 Construct section of basement slab
 Proceed to next section on sequence at same level

REINFORCEMENT NOTES:

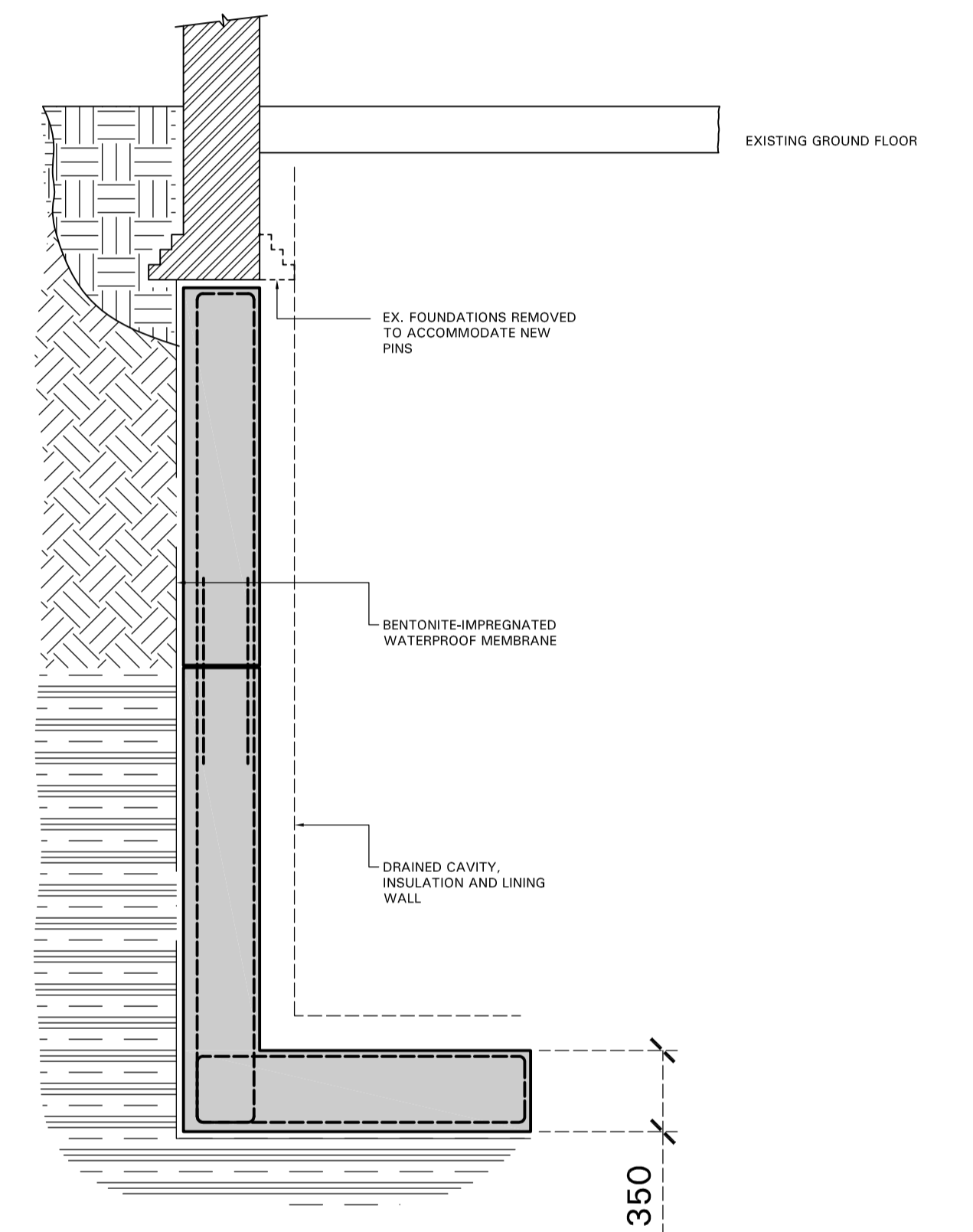
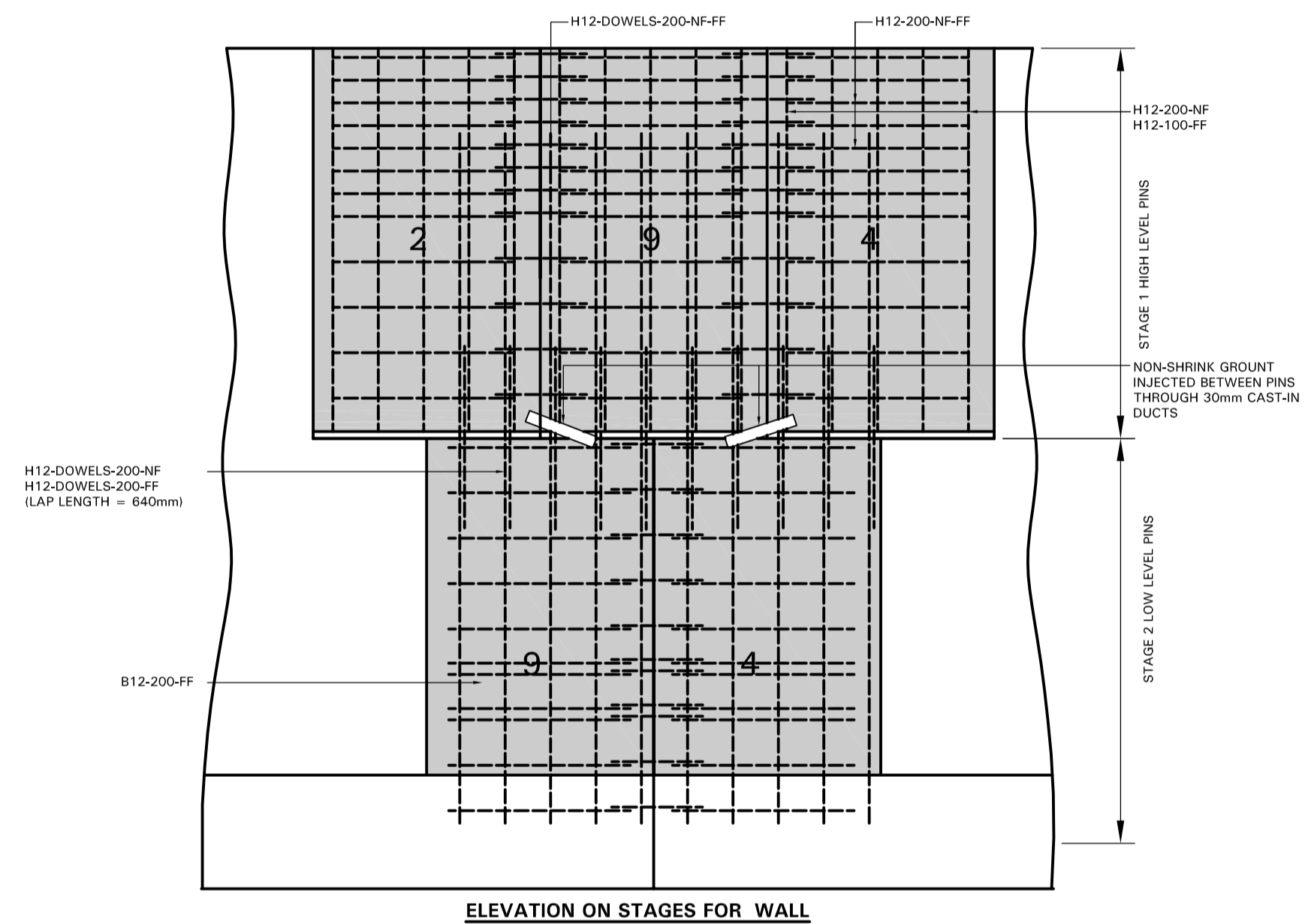
STEM OF WALL: H12-200-FF1
 H12-200-NF1
 H10-200-FF2 HORIZONTAL
 H10-200-NF2 HORIZONTAL

BASE OF WALL: H12-200-NF1
 H12-200-FF1
 H10-200-NF2 TRANSVERSE
 H10-200-FF2 TRANSVERSE

STEM FRONT COVER = 25mm
 STEM REAR COVER = 60mm
 BASE COVER (CONCRETE CAST ON BLINDING) = 40mm
 MAX AGGREGATE = 20mm



- Indicative Concrete Mixes:
- RC 35 Concrete - 1:2:4 Cement:Sand: 20mm Aggregate
 - ST 4 - 1:2:4 Cement: Grit Sand: 14mm Aggregate
 - GEN 1 - 1:3:6 Cement: Grit Sand: 14mm Aggregate



- NOTES:**
1. THIS DRAWING TO BE READ IN CONJUNCTION WITH ALL RELEVANT ARCHITECTS AND ENGINEERS DRAWINGS AND SPECIFICATIONS.
 2. FOR SETTING OUT REFER TO ARCHITECT'S DRAWINGS.
 3. ALL DIMENSIONS ARE IN MILLIMETRES (mm) UNLESS NOTED OTHERWISE.
 4. DO NOT SCALE FROM THE DRAWING OR THE COMPUTER DIGITAL DATA. ONLY FIGURED DIMENSIONS TO BE USED.

Rev	Date	Description	By
P1	06/22/21	PLANNING	JE

Job	11-15 KINGS TERRACE LONDON NW1 0JP
Drawing Status	PLANNING

Title	PROPOSED SECTION
Scale @ A1	1:50
Date	JUNE 21
By	JE
Checked	MB
Drawing Number	MBP / 8292 / 101
Revision	P1

MBP Michael Barclay Partnership
 consulting engineers
 Chronicle House, 72 - 78 Fleet Street
 London EC4Y 1HY
 T 020 7240 1191
 E london@mbp-uk.com
 W mbp-uk.com