

New Box fascia Externally illuminated via trough light in Aluminium Powder coated white RAL 9010 with in Tesco opal 030 Avery 4509 Red 431, Express and blips - Opal 030 - Avery 5600 LD/082A blue letters.

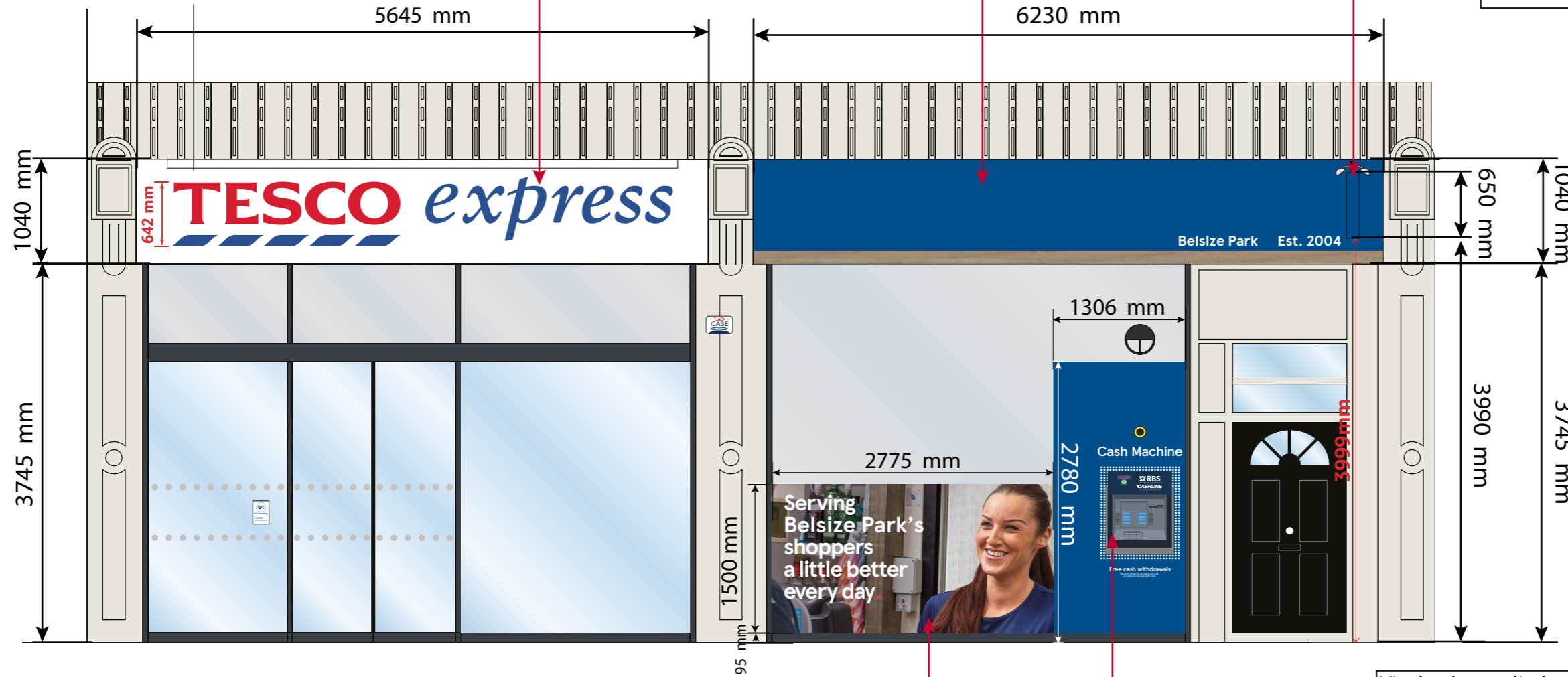
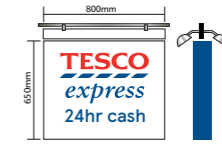
**SIGN 1**  
5645x1040mm

New fascia panel to be 2mm aluminium panel, to be powder coated Blue RAL 5005, 30% Gloss with Brown Arizona Oak woodtex strip to base. Store Address and Est. year vinyl lettering applied to new fascia, non illuminated.

**SIGN 2**  
6230x1040mm

**SIGN 3**  
800x650mm

New projecting sign Externally illuminated via trough light in Aluminium Powder coated white RAL 9010 with in Tesco opal 030 Avery 4509 Red 431, Express and blips - Opal 030 - Avery 5600 LD/082A blue letters. Sides, top and bottom to be blue as per fascia.



**SIGN 5**  
1306x2780mm

Vinyl to be applied around ATM. Colour - Pantone 293, with print as per artwork. White spots on blue for vinyl panel. Blue header panel with white text to read 'Cash Machine'.

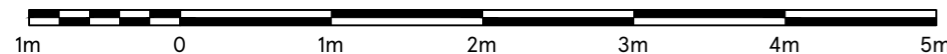
**SIGN 4**  
2775x1500mm

New vinyls to be applied externally up to 1500mm high from FFL with vandal proof protection. Avery 800-01 off white chiffon vinyl to be applied on reverse

**SOUTH ELEVATION**

SCALE BAR

1:50



DRAWING NO  
03\_2721\_03B\_R2

SCALE  
1:50@A3

CHECKED BY  
**ANDY HORWOOD**  
DRAWN BY  
**GAUTHAM.R**

DATE  
30-Jun-21

STORE TYPE  
EXPRESS

STORE NAME  
BELSIZE PARK

CONTENT  
PROPOSED ELEVATION



**FEASIBILITY PLANNING**  
STORE PLANNING DEPARTMENT  
PROPERTY SERVICES  
HIGHWOODS BUILDING, KESTREL WAY  
WELWYN GARDEN CITY, HERTFORDSHIRE, AL7 1GB UK  
TELEPHONE : 01707 395150  
THE COPYRIGHT AND ALL OTHER RIGHTS IN AND RELATING TO THIS PUBLICATION BELONG TO AND ARE THE SOLE PROPERTY OF TESCO STORES LIMITED. ALL RIGHTS ARE RESERVED. NEITHER THE WHOLE NOR ANY PART OF THIS PUBLICATION MAY BE REPRODUCED OR TRANSMITTED IN ANY FORM OR BY ANY ELECTRONIC OR MECHANICAL MEANS INCLUDING PHOTOCOPIING AND RECORDING OR FROM ANY RETRIEVAL SYSTEM WITHOUT THE PRIOR WRITTEN LICENCE FROM THE OWNERS © 2011 TESCO STORES LIMITED